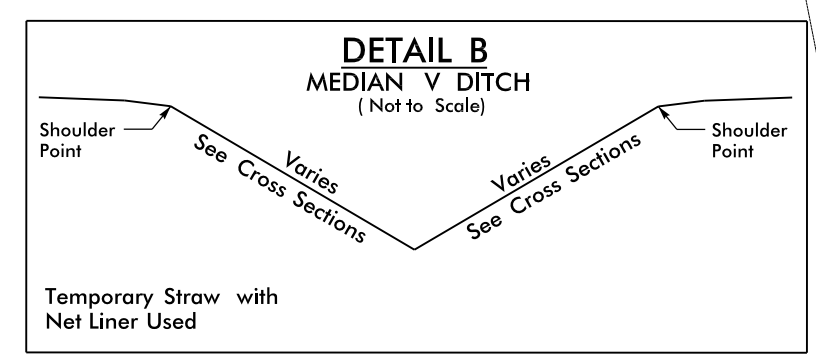
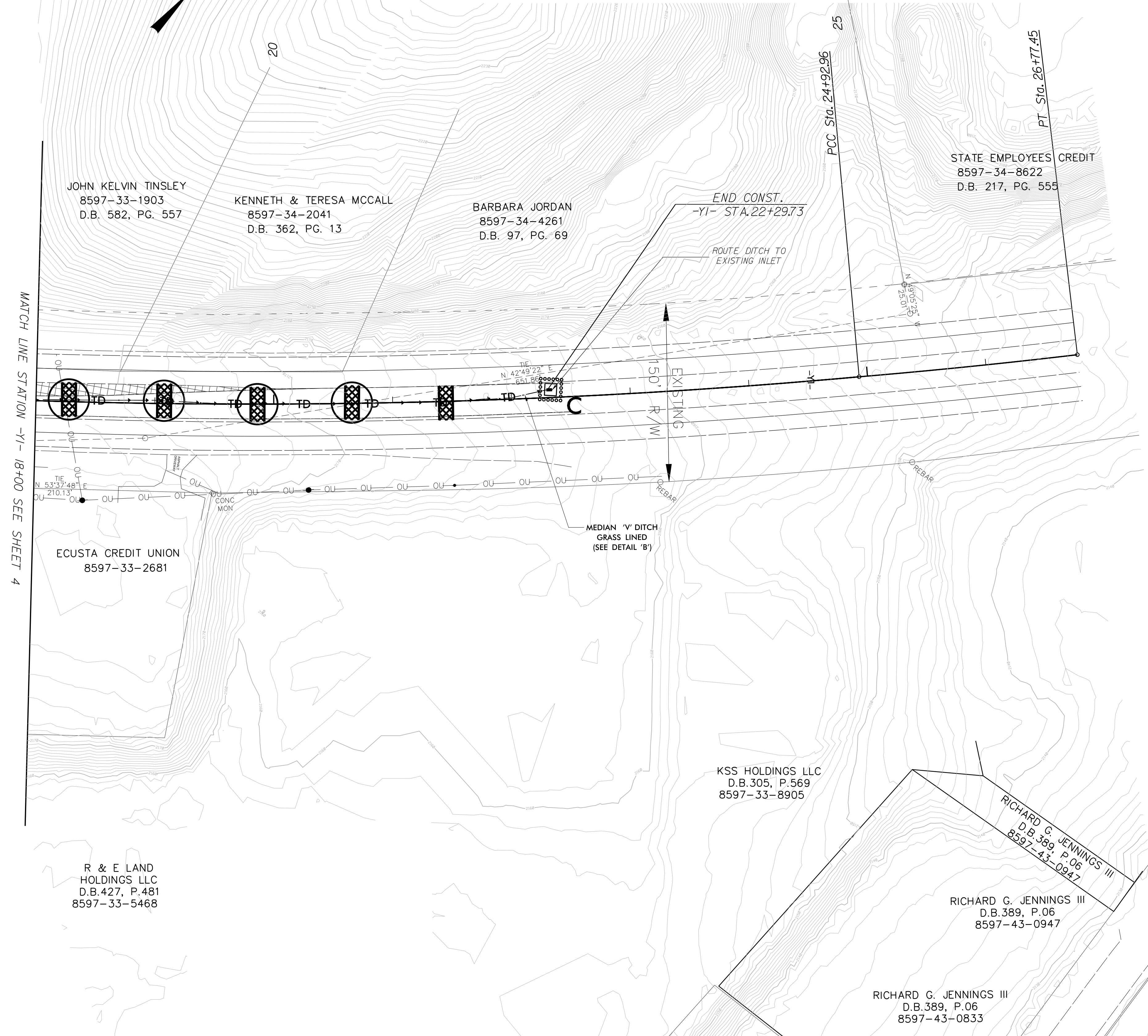


PROJECT REFERENCE NO. <i>R-5605</i>	SHEET NO. <i>EC-8/CONST.8</i>
RW SHEET NO.	
ROADWAY DESIGN ENGINEER	HYDRAULICS ENGINEER



-YI- FROM STA. 14+51 TO STA. 16+59
& FROM STA. 17+00 TO STA. 22+29.73



NOTES: ANY DEVIATION FROM OPTIONS GIVEN WILL REQUIRE PRIOR APPROVAL BY ENGINEER.


ADDITIONAL EROSION CONTROL DEVICES MAY NEED TO BE INSTALLED AS DIRECTED BY THE ENGINEER.

NOTE: PERIMETER EROSION CONTROL MEASURES SHALL BE INSTALLED DURING CLEARING AND GRUBBING PHASE.

CLEARING AND GRUBBING EROSION CONTROL FOR CONSTRUCTION SHEET 8

MATCH LINE STATION -YI- 18+00 SEE SHEET 4

PLANS PREPARED BY :



WGLA Engineering, PLLC
214 N. King Street
Hendersonville, NC 28792
(828) 687-7177
wglac.com

FOR
DIVISION OF HIGHWAYS

RICHARD G. JENNINGS III
D.B. 389, P. 06
8597-43-0947

RICHARD G. JENNINGS III
D.B. 389, P. 06
8597-43-0947

RICHARD G. JENNINGS III
D.B. 389, P. 06
8597-43-0833

JOHN KELVIN TINSLEY
8597-33-1903
D.B. 582, PG. 557

KENNETH & TERESA MCCALL
8597-34-2041
D.B. 362, PG. 13

BARBARA JORDAN
8597-34-4261
D.B. 97, PG. 69

STATE EMPLOYEES CREDIT
8597-34-8622
D.B. 217, PG. 555

ECUSTA CREDIT UNION
8597-33-2681

KSS HOLDINGS LLC
D.B. 305, P. 569
8597-33-8905

R & E LAND HOLDINGS LLC
D.B. 427, P. 481
8597-33-5468