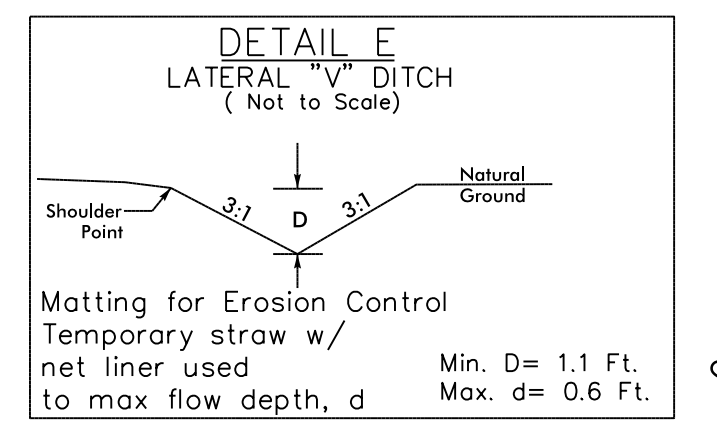
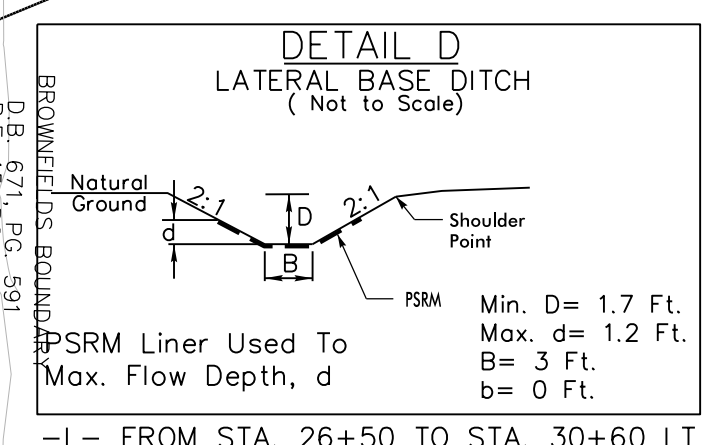


PROJECT REFERENCE NO. <i>R-5605</i>	SHEET NO. <i>EC-5/CONST.5</i>
RW SHEET NO.	
ROADWAY DESIGN ENGINEER	HYDRAULICS ENGINEER

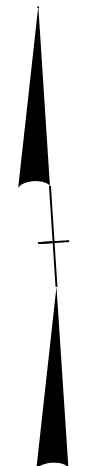
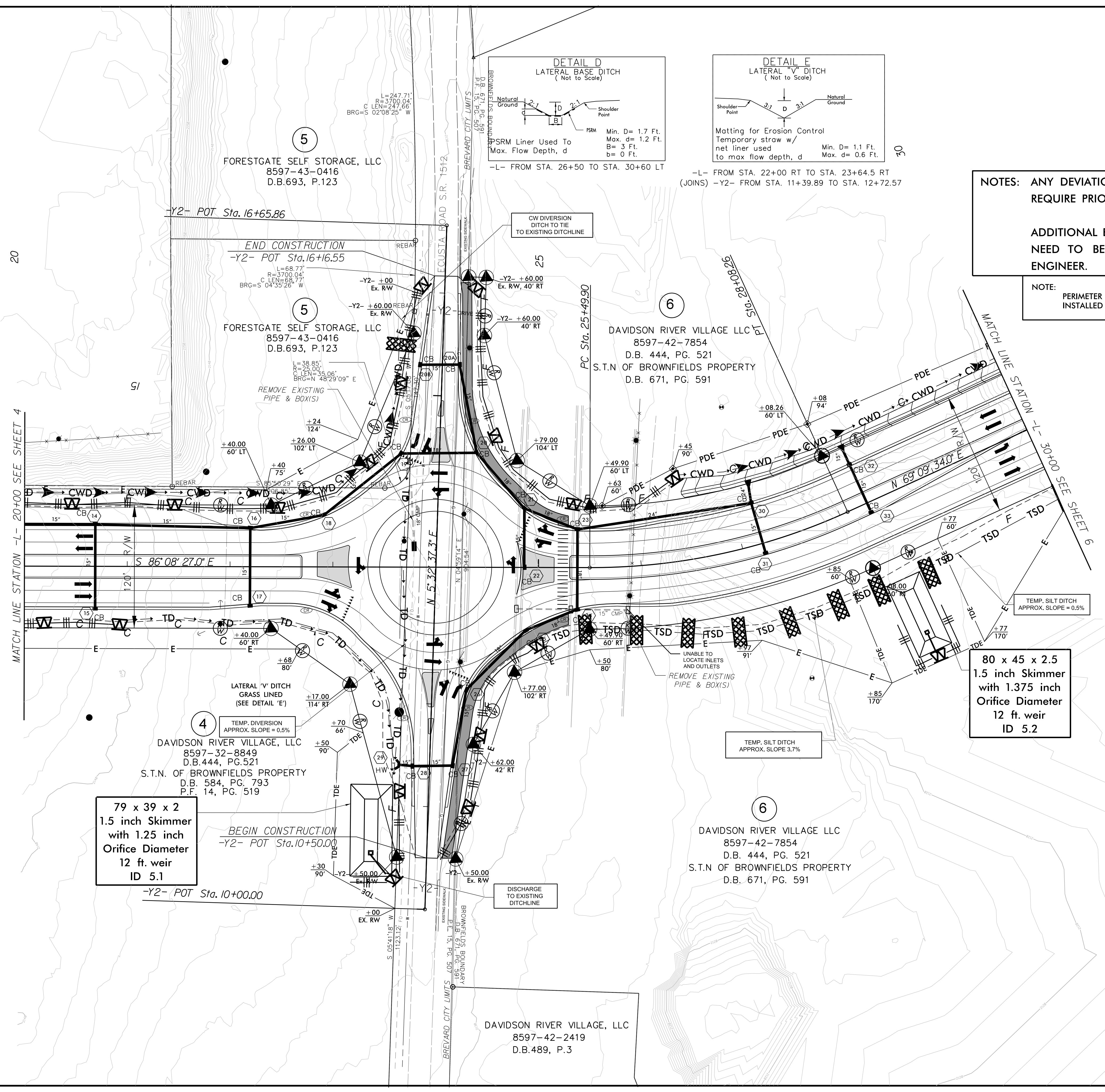
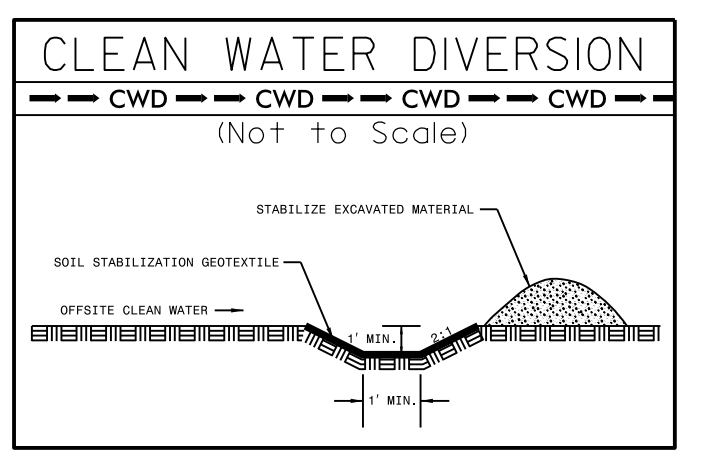



NOTES: ANY DEVIATION FROM OPTIONS GIVEN WILL REQUIRE PRIOR APPROVAL BY ENGINEER.

ADDITIONAL EROSION CONTROL DEVICES MAY NEED TO BE INSTALLED AS DIRECTED BY THE ENGINEER.

NOTE: PERIMETER EROSION CONTROL MEASURES SHALL BE INSTALLED DURING CLEARING AND GRUBBING PHASE.

CLEARING AND GRUBBING EROSION CONTROL FOR CONSTRUCTION SHEET 5



PLANS PREPARED BY :
 **WGLA Engineering, PLLC**
 214 N. King Street
 Hendersonville, NC 28792
 (828) 687-7177
 wglac.com
FOR
DIVISION OF HIGHWAYS