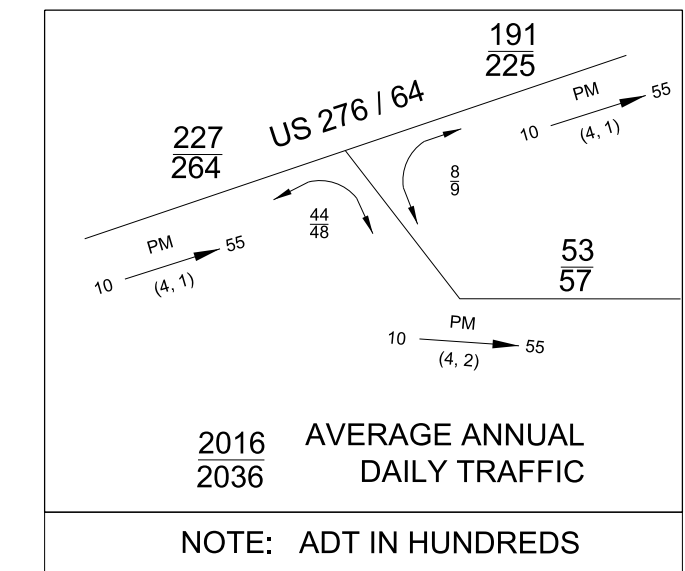
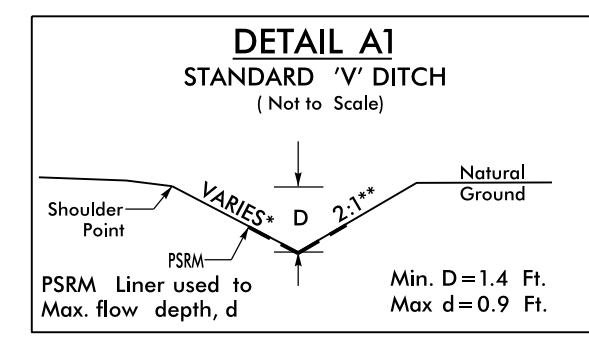
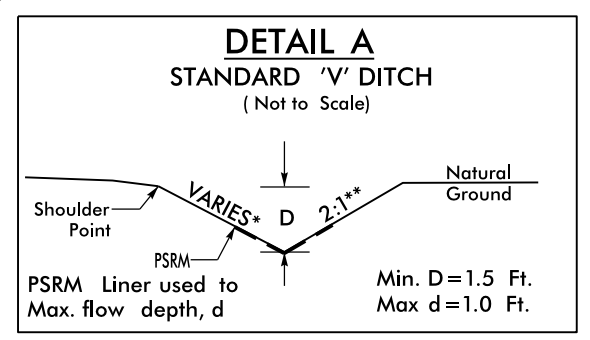
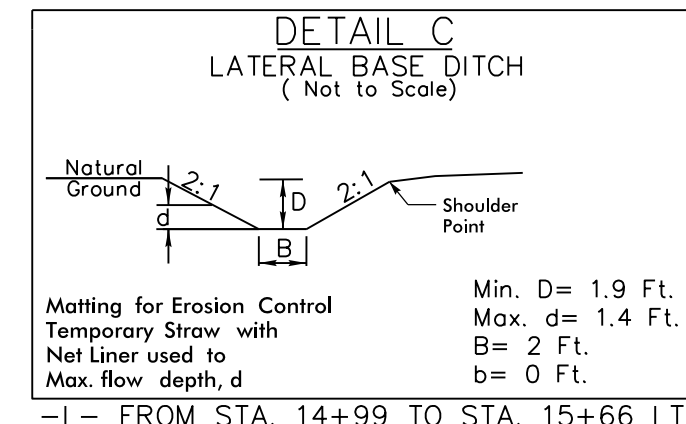
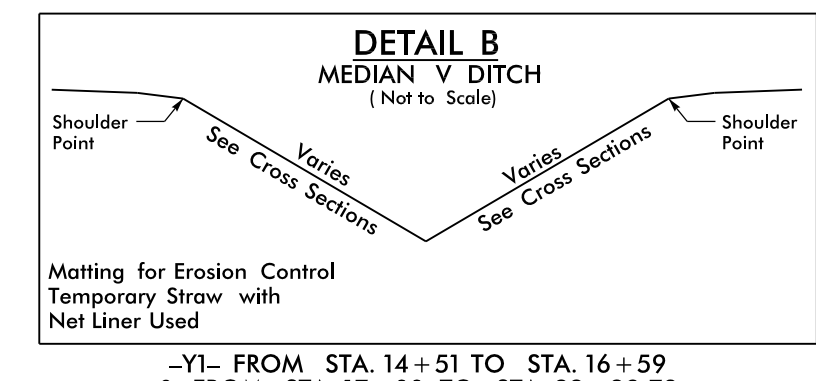
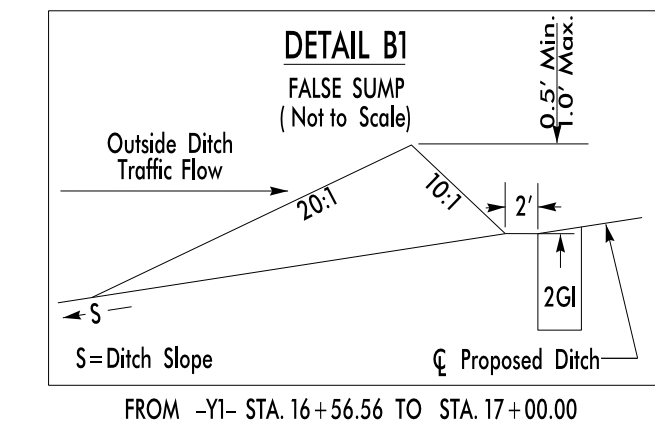


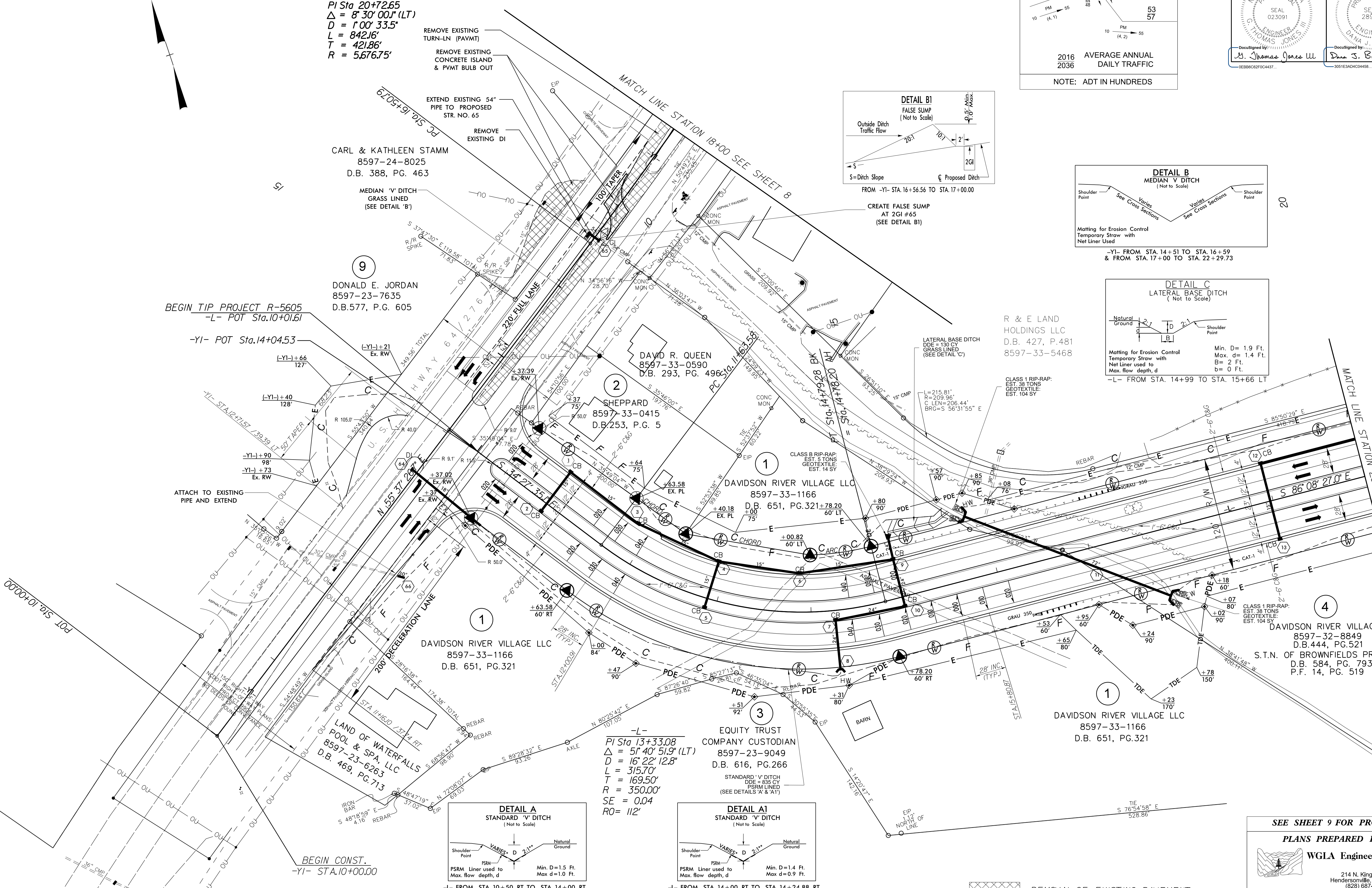
PROJECT REFERENCE NO. <b>R-5605</b>	SHEET NO. <b>4</b>
RW SHEET NO.	
ROADWAY DESIGN ENGINEER 12/23/2015 <b>THOMAS JONES III</b>	HYDRAULICS ENGINEER 12/22/2015 <b>DANA J. BOLLEN</b>
SEAL 023091	SEAL 28945
DocuSigned by: <b>Thomas Jones III</b>	DocuSigned by: <b>Dana J. Bollen</b>
48886C2F9C4437	3051E3AD4C04458



**-YI-**  
 PI Sta 20+72.65  
 $\Delta = 8' 30'' 00.1''$  (LT)  
 $D = 1' 00'' 33.5''$   
 $L = 842.16'$   
 $T = 421.86'$   
 $R = 5,676.75'$



**-L-**  
 PI Sta 13+33.08  
 $\Delta = 5' 40'' 51.9''$  (LT)  
 $D = 16' 22'' 12.8''$   
 $L = 315.70'$   
 $T = 169.50'$   
 $R = 350.00'$   
 $SE = 0.04$   
 $RO = 112'$



SEE SHEET 9 FOR PROFILE

PLANS PREPARED BY :

**WGIA Engineering, PLLC**

214 N. King Street  
Hendersonville, NC 28792  
(828) 687-7177  
wgia.com

FOR  
**DIVISION OF HIGHWAYS**

REMOVAL OF EXISTING PAVEMENT

5/14/2015 13:37 C:\DRIVE\microstation\R5605\_05\_Rdy\_psh4.dgn