

Place Matting for Erosion Control on Slope as Work Allows. Sta. 17+65 to Sta. 19+00

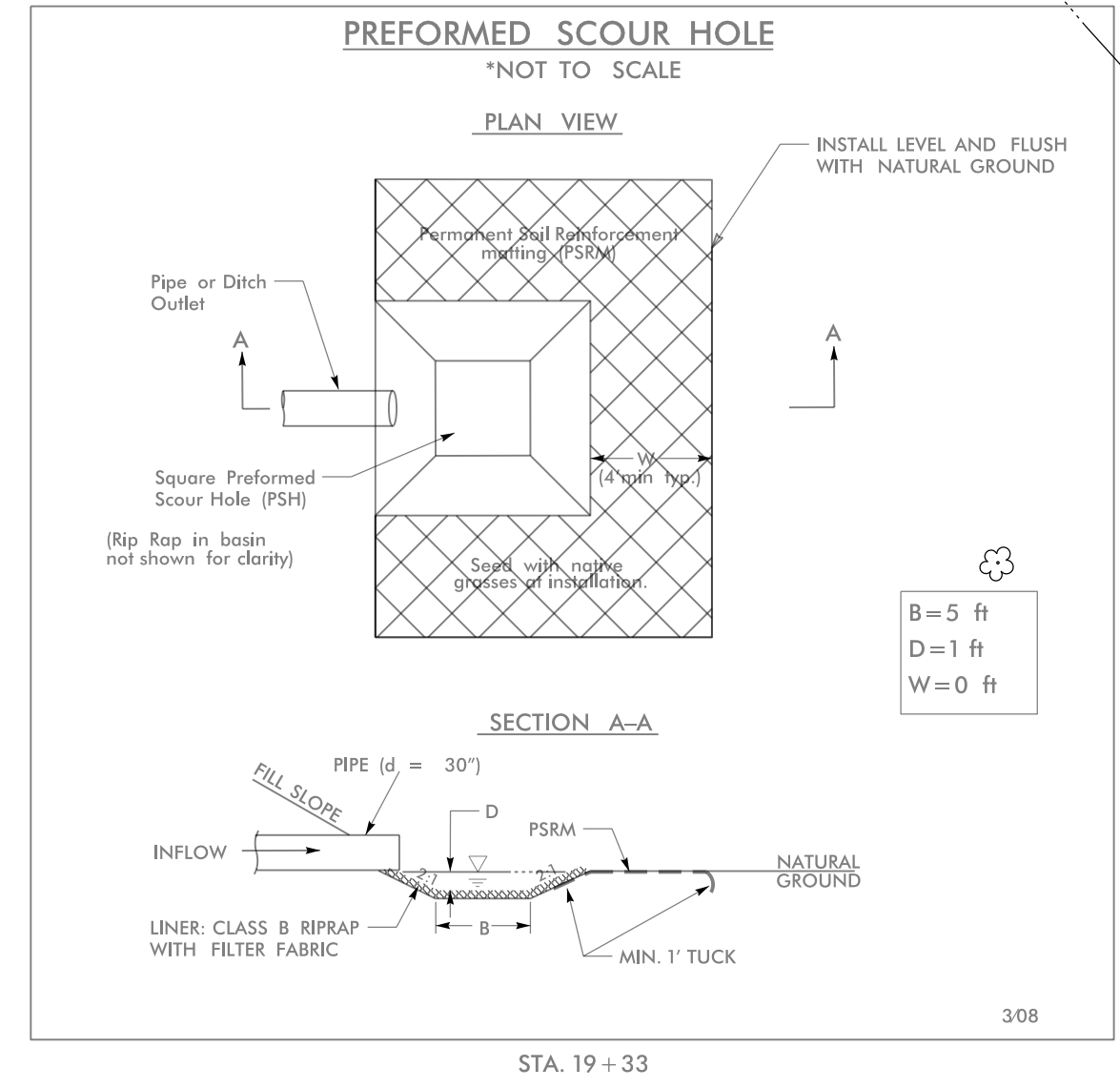
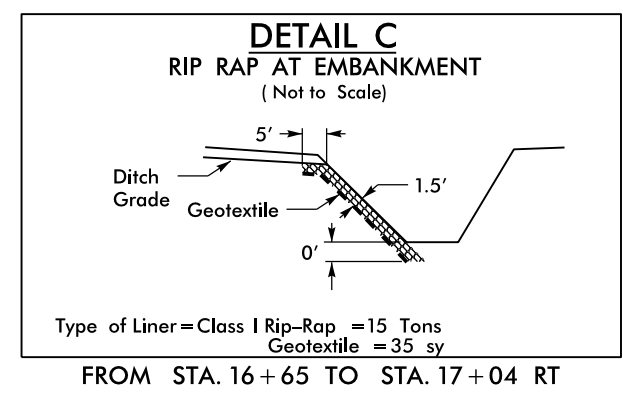
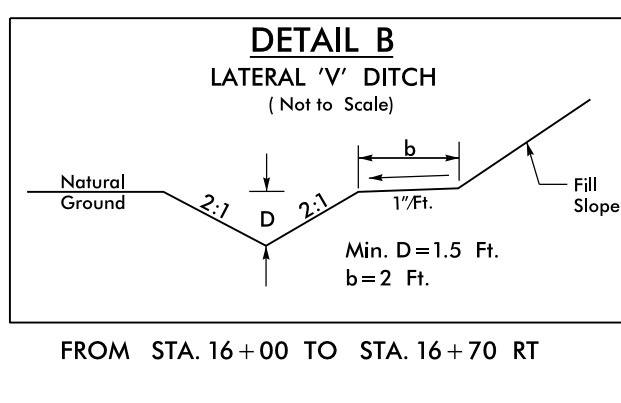
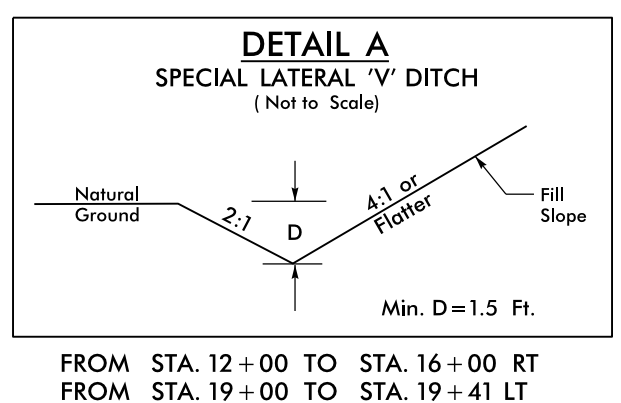
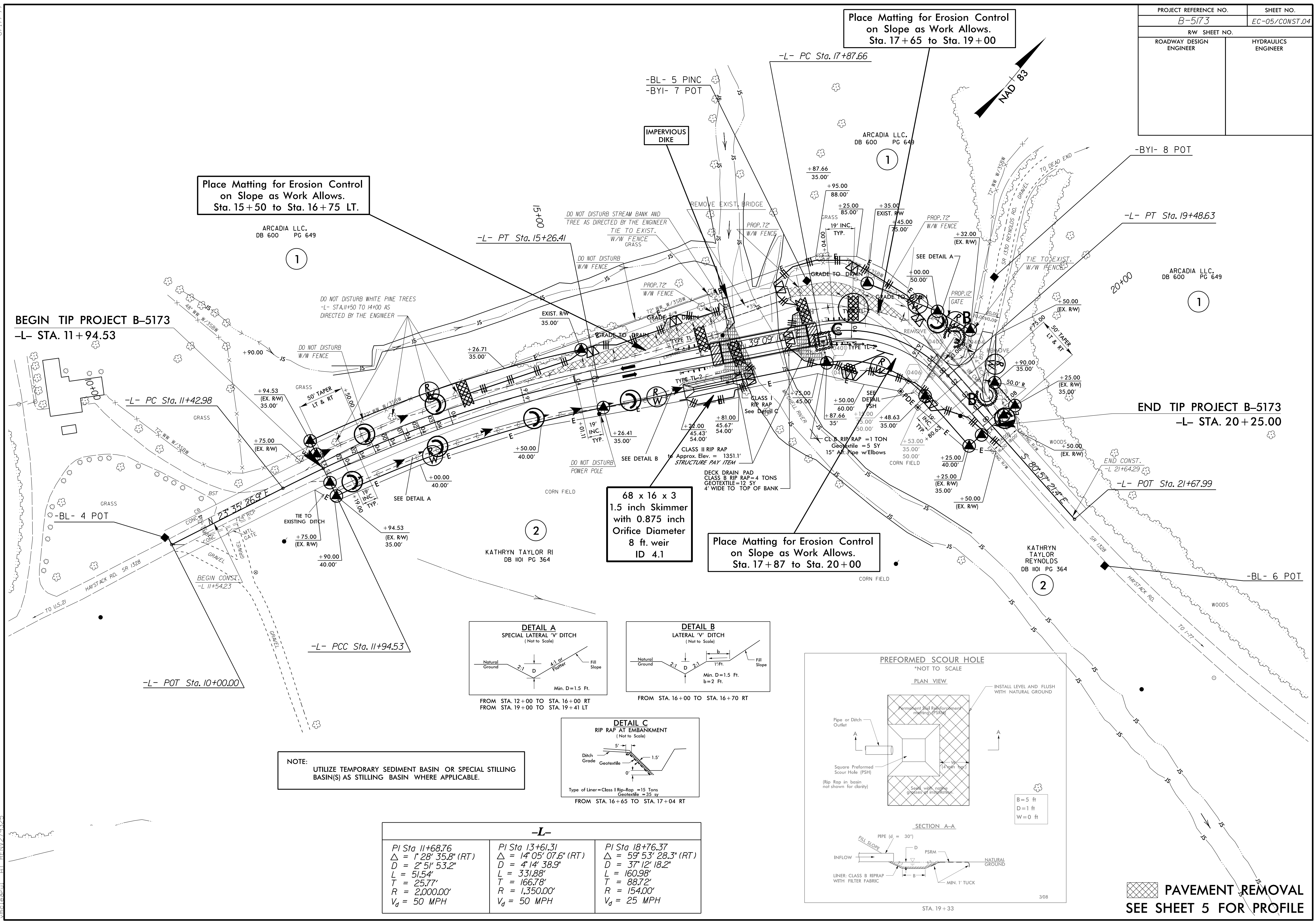
Place Matting for Erosion Control on Slope as Work Allows. Sta. 15+50 to Sta. 16+75 LT.

Place Matting for Erosion Control on Slope as Work Allows. Sta. 17+87 to Sta. 20+00

68 x 16 x 3
1.5 inch Skimmer
with 0.875 inch
Orifice Diameter
8 ft. weir
ID 4.1

BEGIN TIP PROJECT B-5173
-L- STA. 11+94.53

END TIP PROJECT B-5173
-L- STA. 20+25.00



NOTE:
UTILIZE TEMPORARY SEDIMENT BASIN OR SPECIAL STILLING BASIN(S) AS STILLING BASIN WHERE APPLICABLE.

-L-		
PI Sta. 11+68.76 Δ = 1' 28" 35.8" (RT) D = 2' 51" 53.2" L = 51.54' T = 25.77' R = 2,000.00' V _d = 50 MPH	PI Sta. 13+61.31 Δ = 14' 05" 07.6" (RT) D = 4' 14" 38.9" L = 331.88' T = 166.78' R = 1,350.00' V _d = 50 MPH	PI Sta. 18+76.37 Δ = 59' 53" 28.3" (RT) D = 37' 12" 18.2" L = 160.98' T = 88.72' R = 154.00' V _d = 25 MPH

PAVEMENT REMOVAL
SEE SHEET 5 FOR PROFILE

27-OCT-2015 15:42
 R:\E\var\connect\B-5173-EC.psh_4.dgn
 8/17/99
 27-OCT-2015 15:42
 R:\E\var\connect\B-5173-EC.psh_4.dgn
 8/17/99