

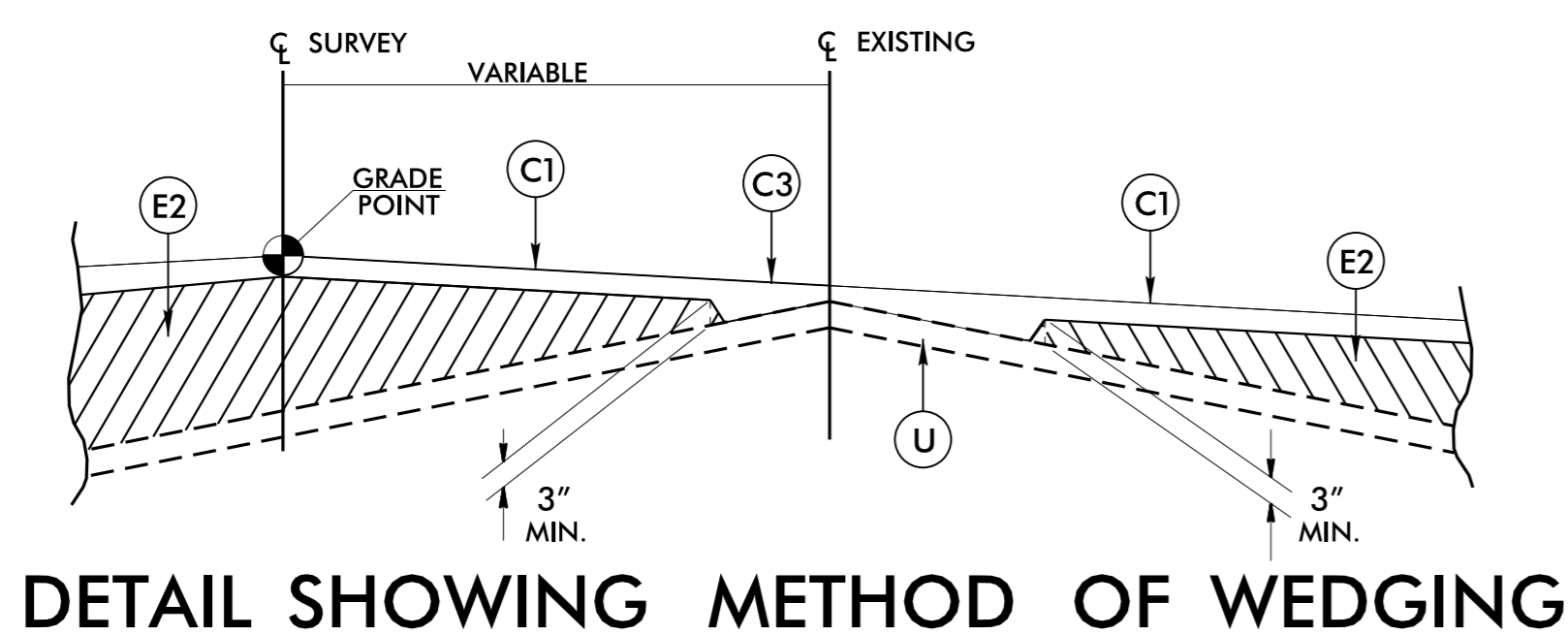
6/2/09

PAVEMENT SCHEDULE

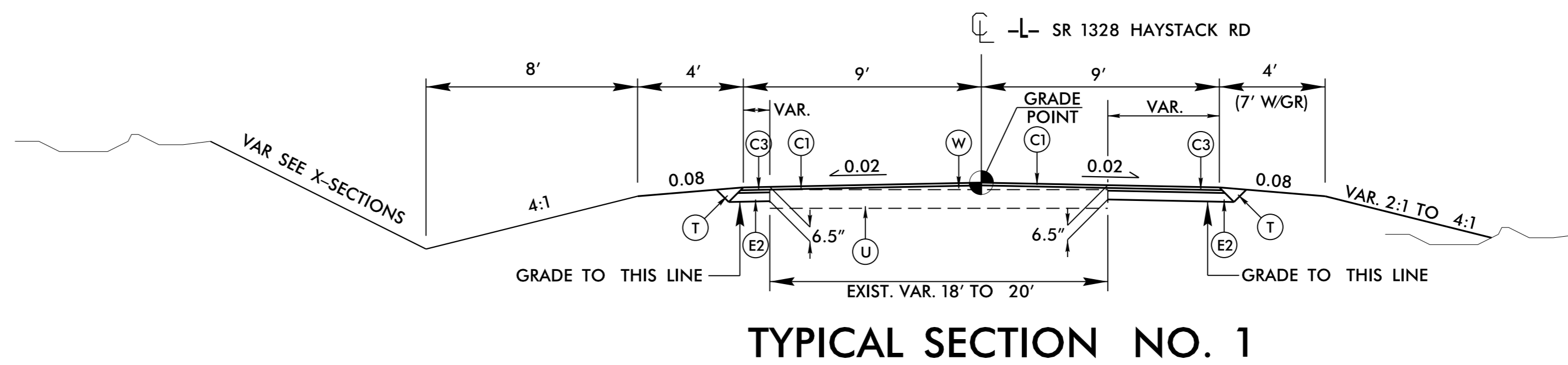
FINAL PAVEMENT DESIGN

C1	PROP. APPROX. 1 1/4" ASPHALT CONCRETE SURFACE COURSE, TYPE SF9.5A, AT AN AVERAGE RATE OF 137 1/2 LBS. PER SQ. YD.	E3	PROP. VAR. DEPTH ASPHALT CONCRETE BASE COURSE, TYPE B25.0B, AT AN AVERAGE RATE OF 114 LBS. PER SQ. YD. PER 1" DEPTH. TO BE PLACED IN LAYERS NOT LESS THAN 3" IN DEPTH OR GREATER THAN 5 1/2" IN DEPTH.
C2	PROP. APPROX. 1 1/2" ASPHALT CONCRETE SURFACE COURSE, TYPE SF9.5A, AT AN AVERAGE RATE OF 165 LBS. PER SQ. YD.	R	CONCRETE SHOULDER BERM GUTTER.
C3	PROP. APPROX. 2 1/2" ASPHALT CONCRETE SURFACE COURSE, TYPE SF9.5A, AT AN AVERAGE RATE OF 137.5 LBS. PER SQ. YD. IN EACH OF TWO LAYERS.	T	EARTH MATERIAL.
C4	PROP. VAR. DEPTH ASPHALT CONCRETE SURFACE COURSE, TYPE SF9.5A, AT AN AVERAGE RATE OF 110 LBS. PER SQ. YD. PER 1" DEPTH. TO BE PLACED IN LAYERS NOT TO EXCEED 1 1/2" IN DEPTH.	U	EXISTING PAVEMENT.
E1	PROP. APPROX. 3" ASPHALT CONCRETE BASE COURSE, TYPE B25.0B, AT AN AVERAGE RATE OF 342 LBS. PER SQ. YD.	W	WEDGING (SEE DETAIL)
E2	PROP. APPROX. 4" ASPHALT CONCRETE BASE COURSE, TYPE B25.0B, AT AN AVERAGE RATE OF 456 LBS. PER SQ. YD.		

NOTE: PAVEMENT EDGE SLOPES ARE 1:1 UNLESS SHOWN OTHERWISE.



DETAIL SHOWING METHOD OF WEDGING



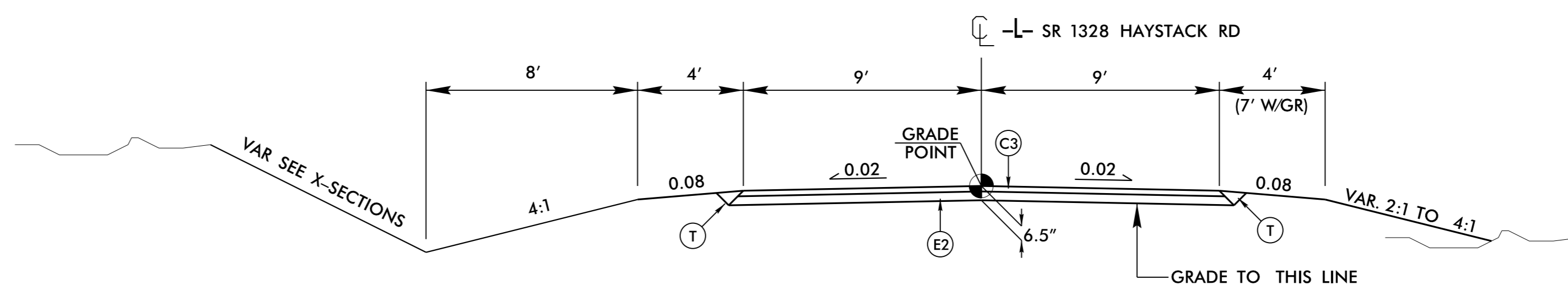
TYPICAL SECTION NO. 1

USE TYPICAL SECTION NO. 1

-L- STA. 11+94.53 TO 14+50.00
-L- STA. 19+37.00 TO 20+25.00

NOTE: USE DITCH DETAIL A IN CONJUNCTION WITH

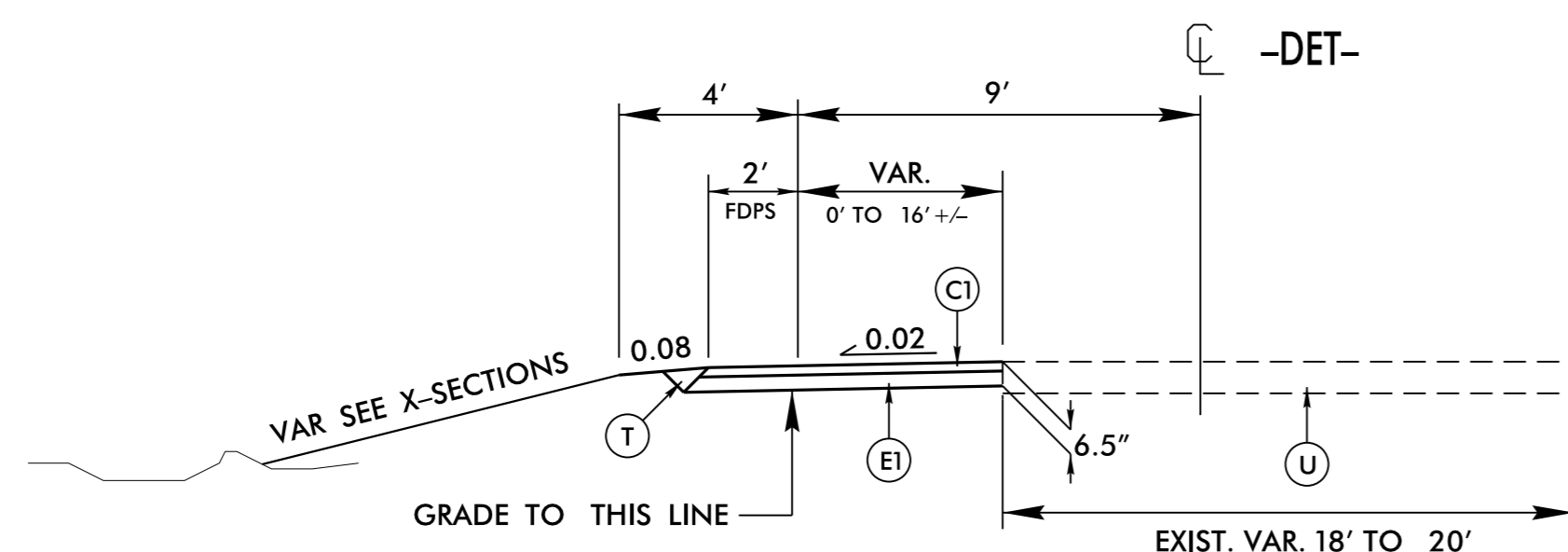
T.S. # 1 -L- STA. 12+00.00 TO 14+00.00 (RIGHT)
T.S. # 2 -L- STA. 14+00.00 TO 16+00.00 (RIGHT)
T.S. # 2 -L- STA. 19+00.00 TO 19+41.00 (LEFT)



TYPICAL SECTION NO. 2

USE TYPICAL SECTION NO. 2

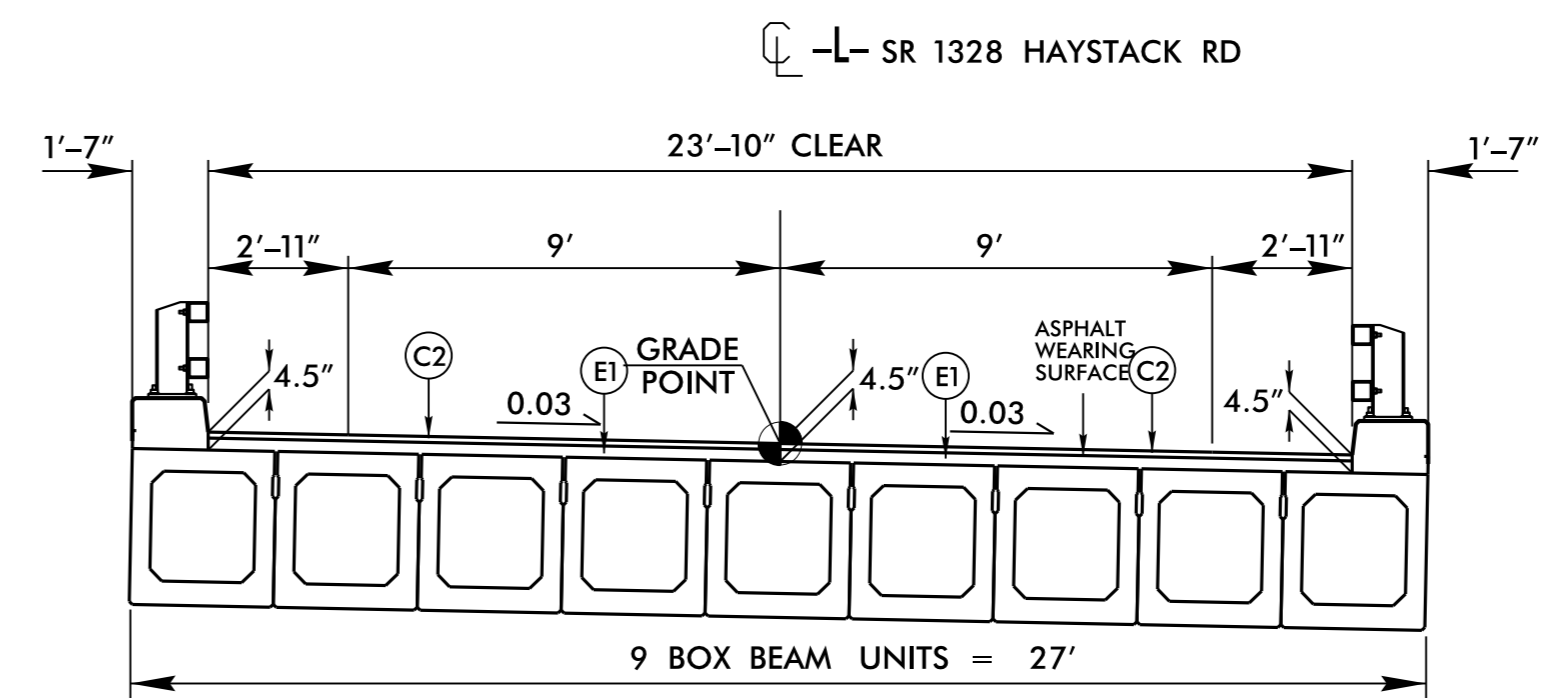
-L- STA. 14+50.00 TO 16+70.88 (BRIDGE)
17+73.13 (BRIDGE) TO -L- STA. 19+37.00



TYPICAL SECTION NO. 3

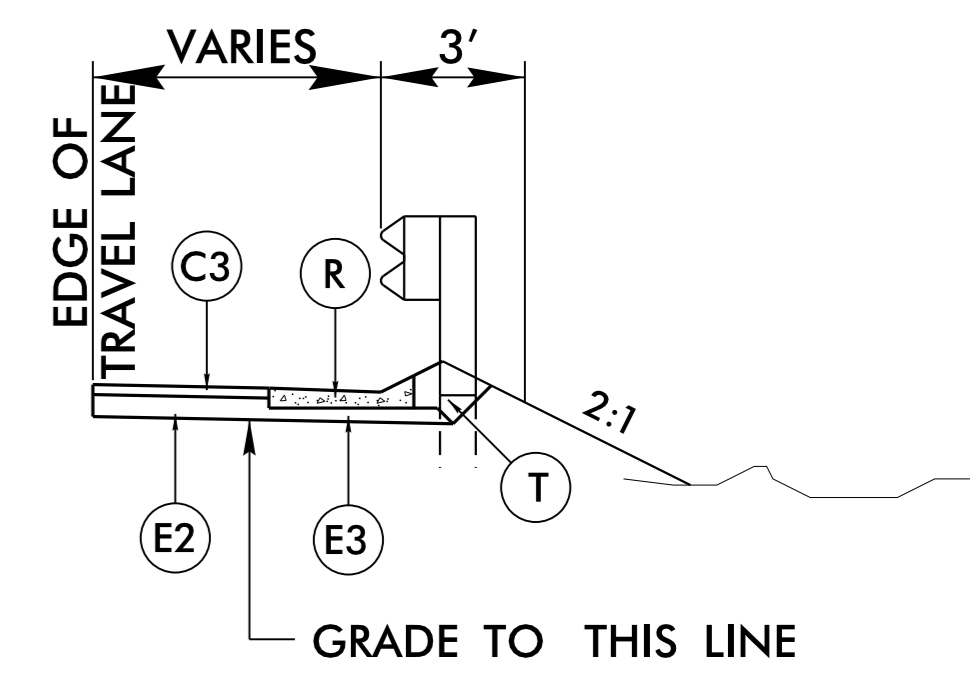
USE TYPICAL SECTION NO. 3

-DET- STA. 18+30.14 TO 19+47.71



TYPICAL SECTION ON STRUCTURE

BEG. BRIDGE -L- STA. 16+70.88 TO END BRIDGE -L- STA. 17+73.13



TYPICAL SECTION NO. 2B

IN CONJUNCTION WITH T.S. # 2

USE TYPICAL SECTION NO. 2B

-L- STA. 17+84.13 TO 17+95.00 RT.

15-DEC-2015 08:48 B-5173-RdJ-tyj.p.dgn

PROJECT REFERENCE NO. B-5173	SHEET NO. 2A-1
ROADWAY DESIGN ENGINEER NORTH CAROLINA SEAL 020111 K. BOYKUS 12/15/2015	PAVEMENT DESIGN ENGINEER NORTH CAROLINA SEAL 039819 T. HOWARD 12/17/2015