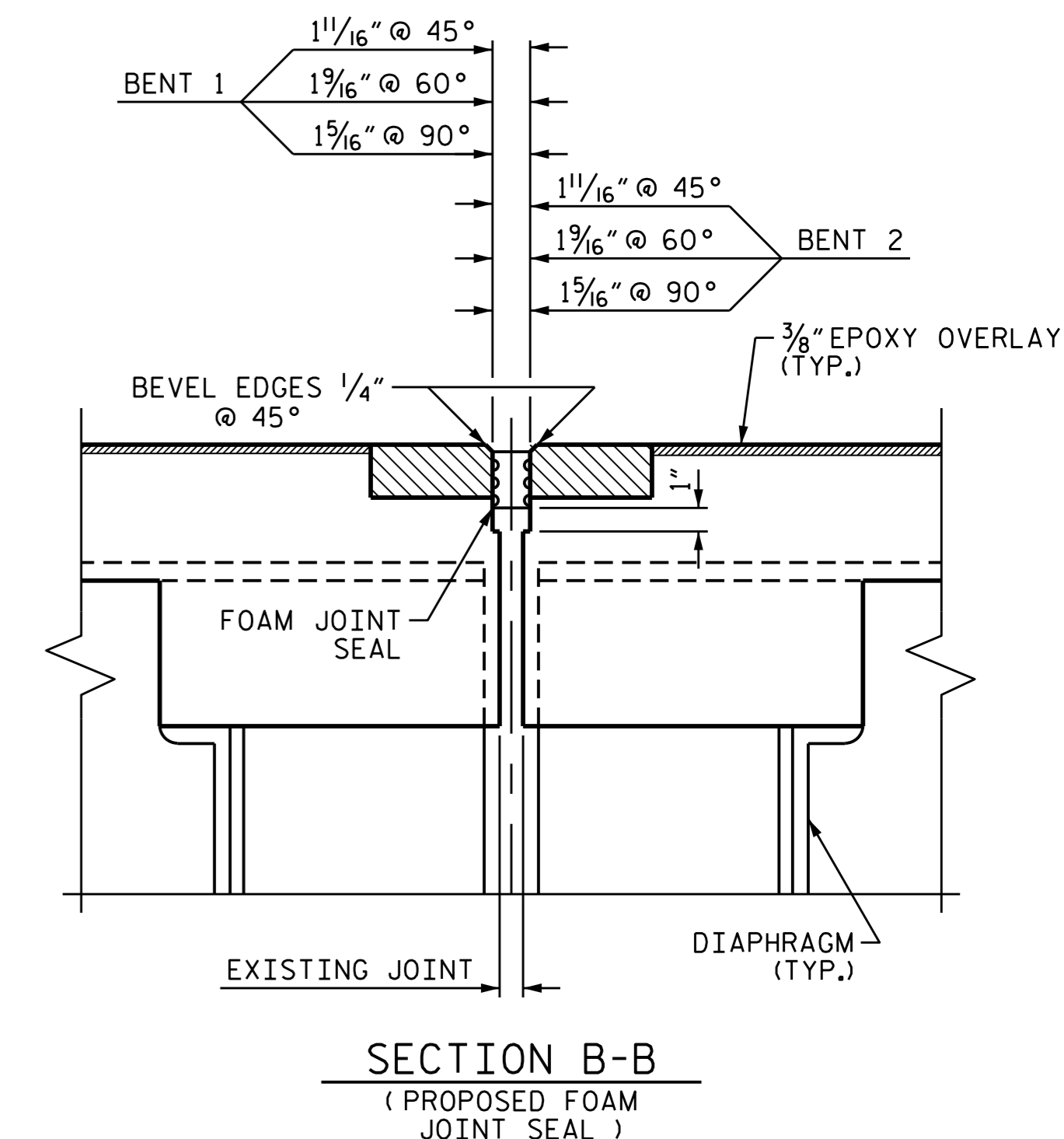
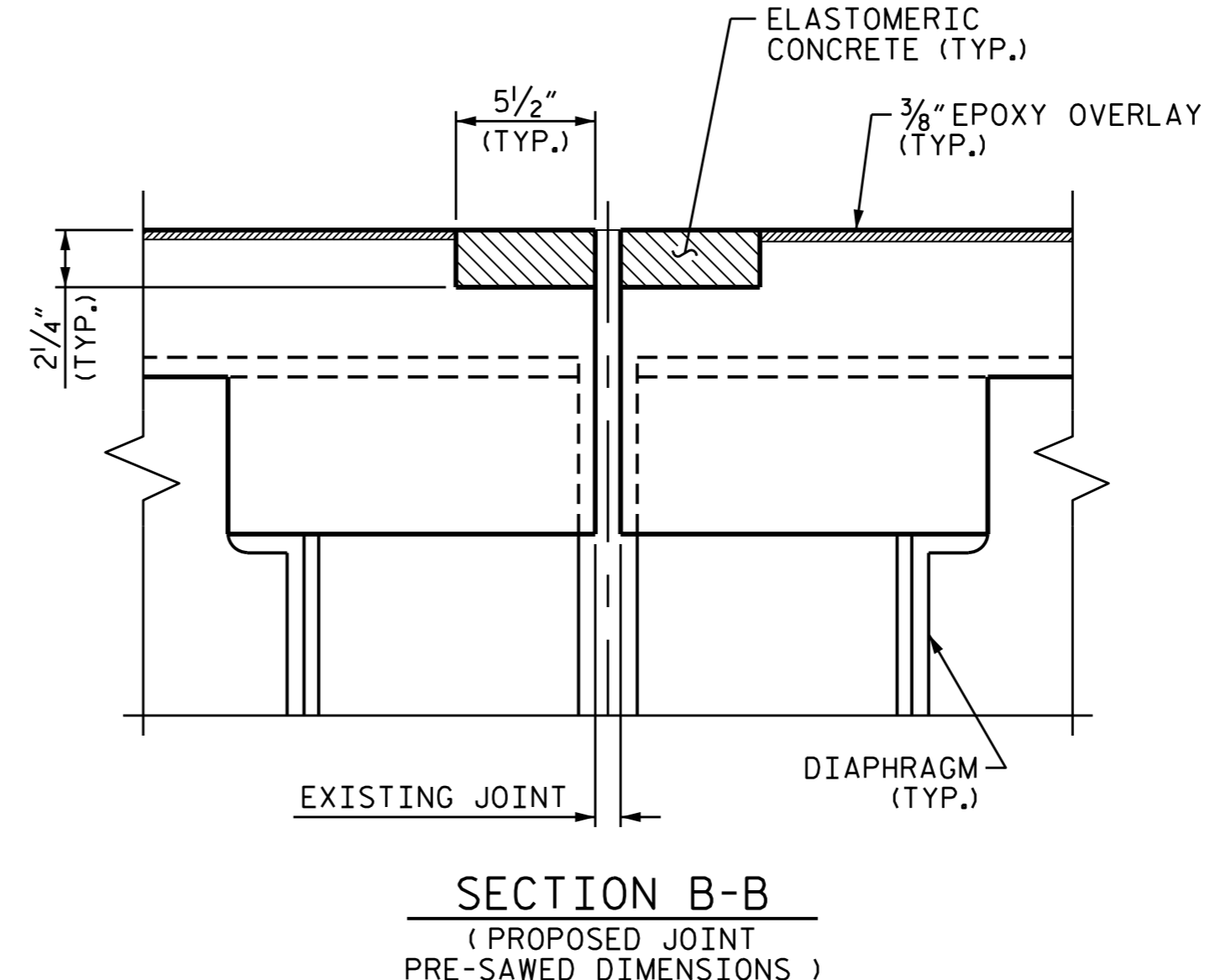
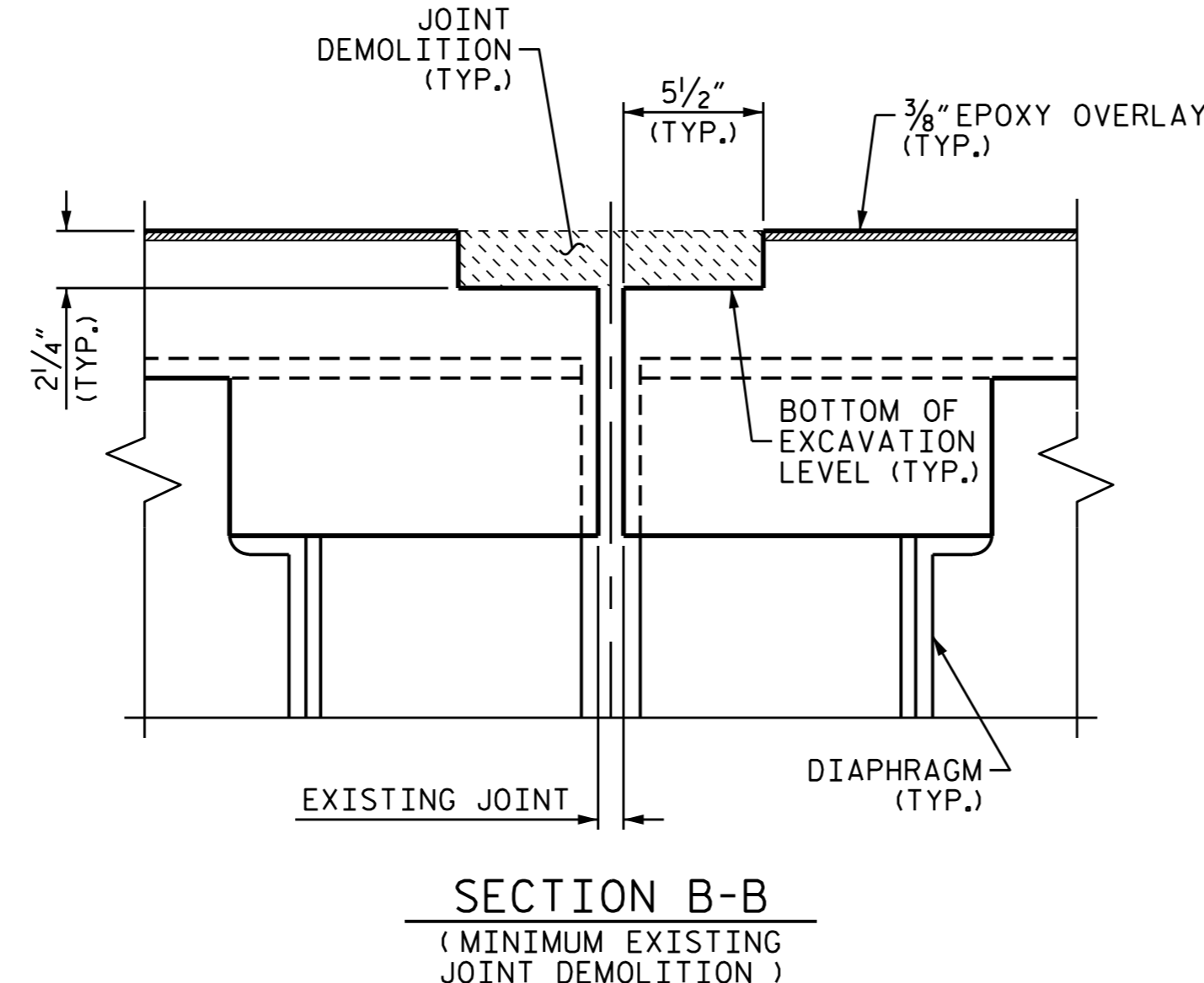
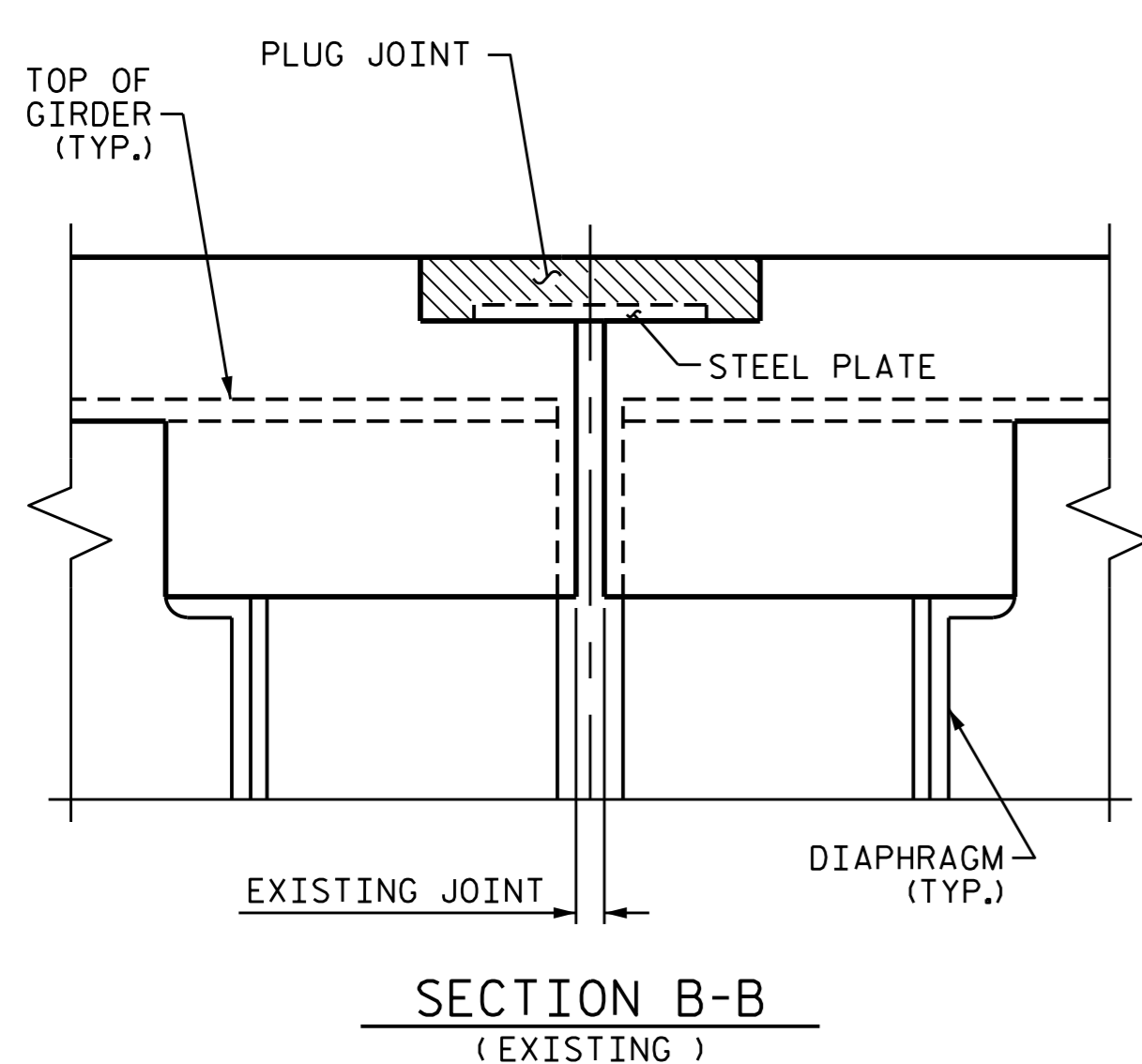


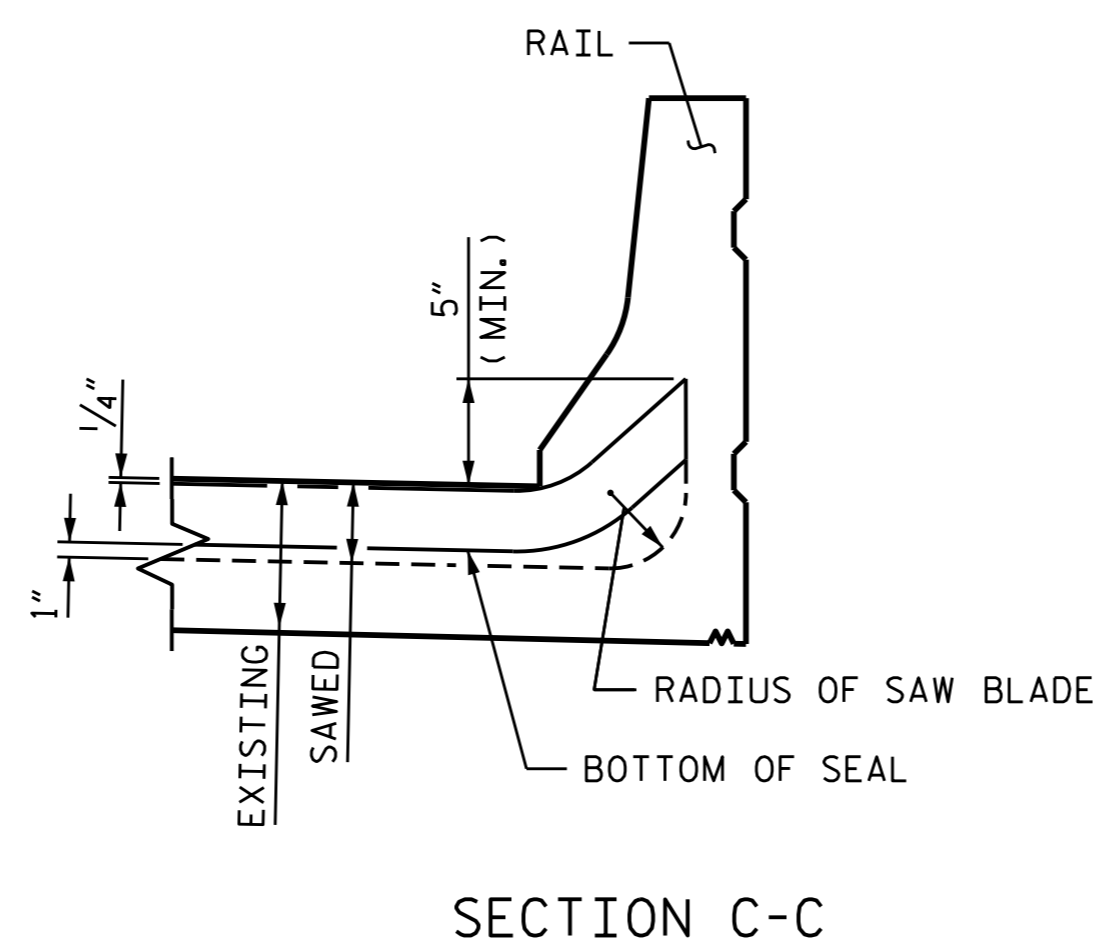
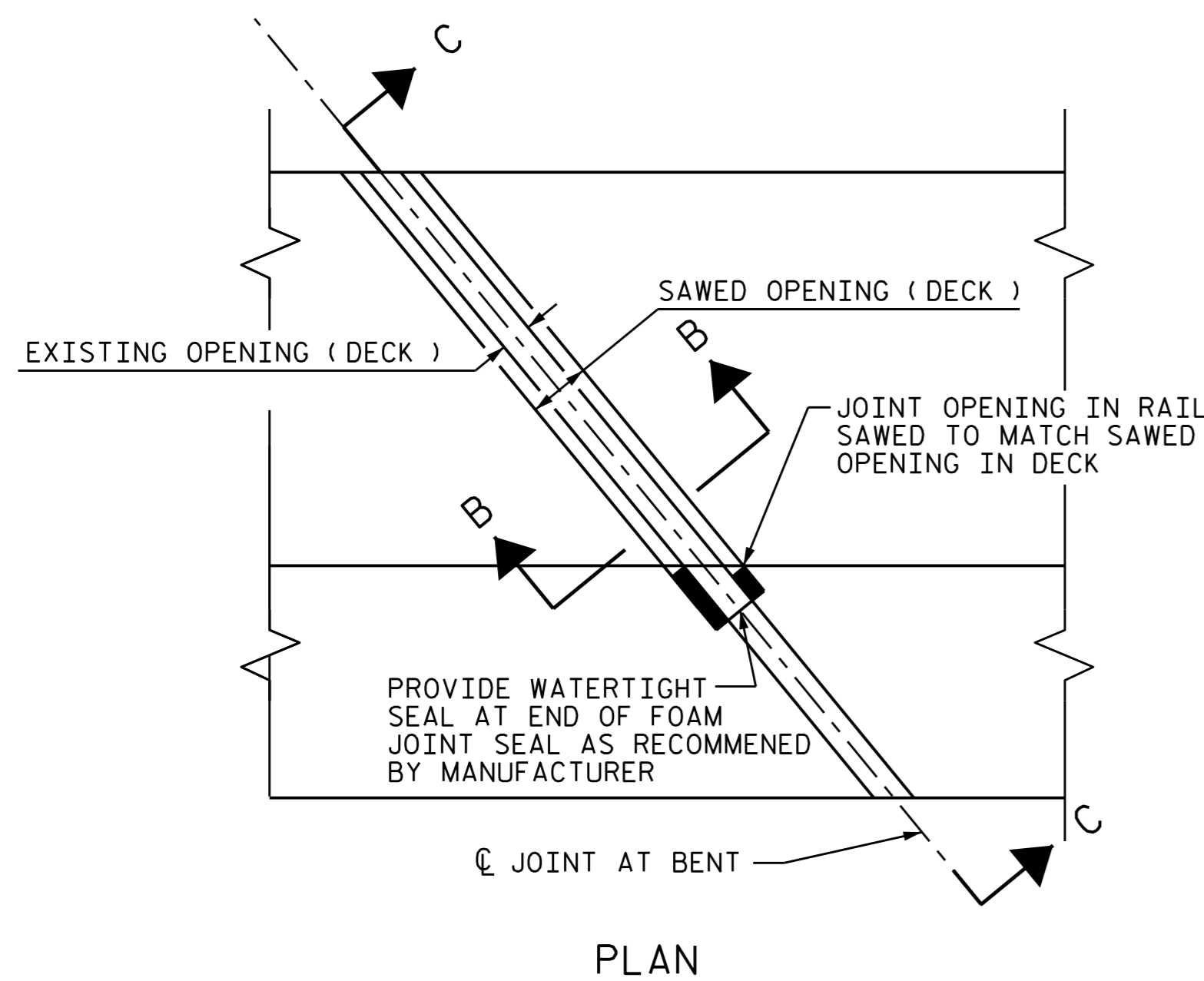
**NOTES:**  
CONTRACTOR SHALL FIELD VERIFY THE EXISTING FORMED OPENING PRIOR TO OBTAINING JOINT MATERIAL.  
HYDRO-DEMOLITION OR EXCAVATION OF CONCRETE AT THE EXISTING JOINT SHALL RESULT IN THE BOTTOM OF THE EXCAVATION BEING REASONABLY FLAT AND LEVEL, TO PROVIDE SUFFICIENT SUBSTRATE FOR PLACEMENT AND SUPPORT OF ELASTOMERIC CONCRETE.  
FOR FOAM JOINT SEALS, SEE SPECIAL PROVISIONS.  
FOR ELASTOMERIC CONCRETE, SEE SPECIAL PROVISIONS.  
RETAIN ALL EXISTING REINFORCING STEEL. CLEAN AND REPAIR AS NEEDED.  
THE NOMINAL UNCOMPRESSED SEAL WIDTH OF FOAM JOINT SEAL SHALL BE 2".  
THE CONTRACTOR WILL NOT BE PERMITTED TO FORM THE JOINTS IN LIEU OF SAWING THE JOINT.

**JOINT INSTALLATION SEQUENCE  
AT END BENTS**



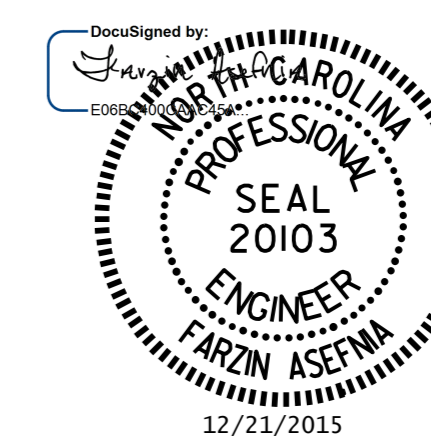
**JOINT INSTALLATION SEQUENCE  
AT BENTS**

DEMOLISH BRIDGE JOINT AREA TO THE NECESSARY DEPTH, SUCH THAT ELASTOMERIC CONCRETE SHALL BE FOUNDED ON SOUND CONCRETE.



ELASTOMERIC CONCRETE (CU. FT.)*	BR. #395	BR. #396
BENT 1	14.0	9.0
BENT 2	14.0	9.0
TOTAL	28.0	18.0

\* BASED ON THE MINIMUM BLOCKOUT SHOWN



PROJECT NO. I-5767  
FORSYTH COUNTY  
BRIDGE NO. 395 (WBL)  
396 (EBL)

REVISIONS						SHEET NO. S-7
NO.	BY:	DATE:	NO.	BY:	DATE:	
1			3			TOTAL SHEETS 7
2			4			

DRAWN BY : D.A. DAVENPORT DATE : 10/14/15  
CHECKED BY : F. ASEFNIA DATE : 11/15