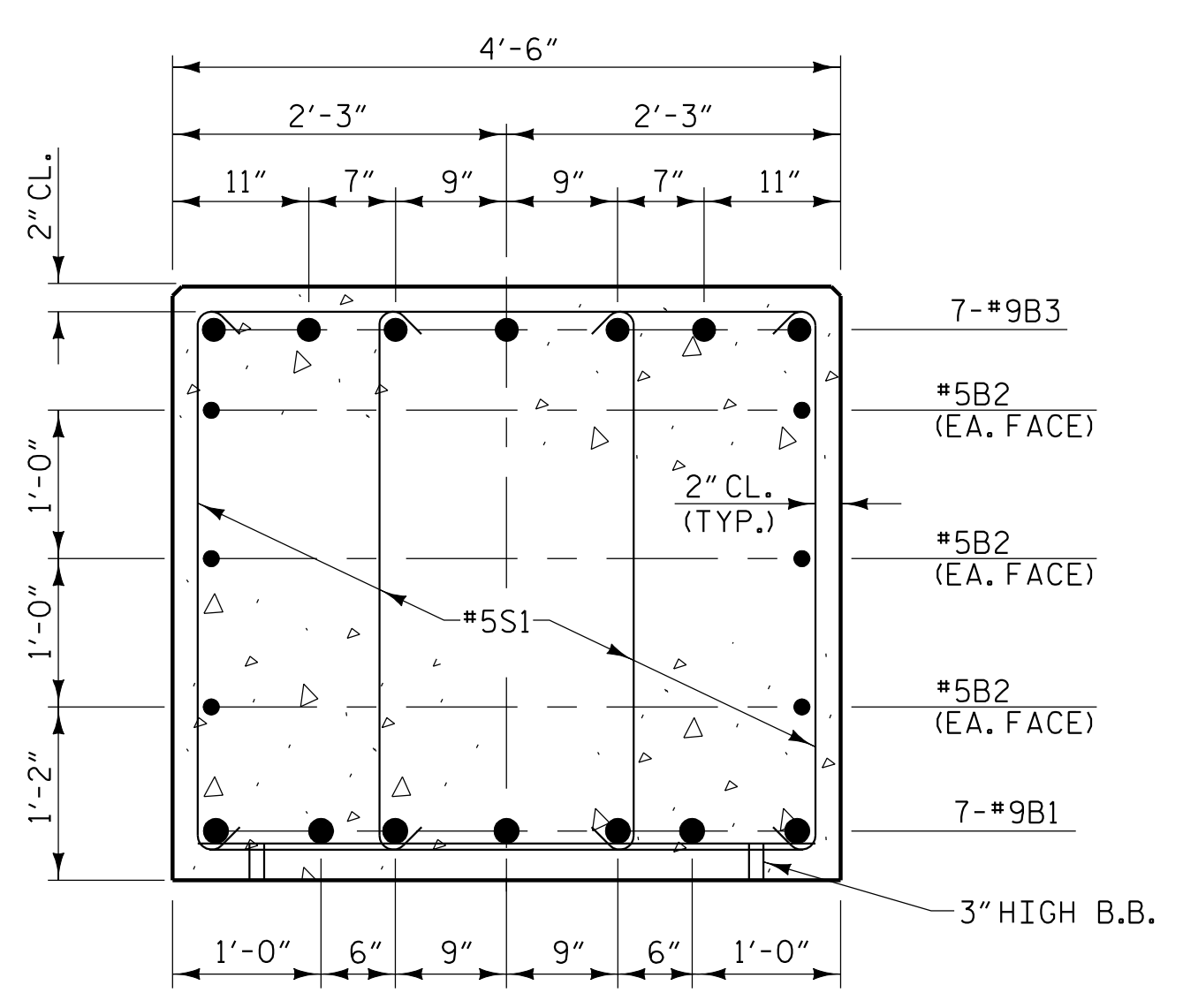
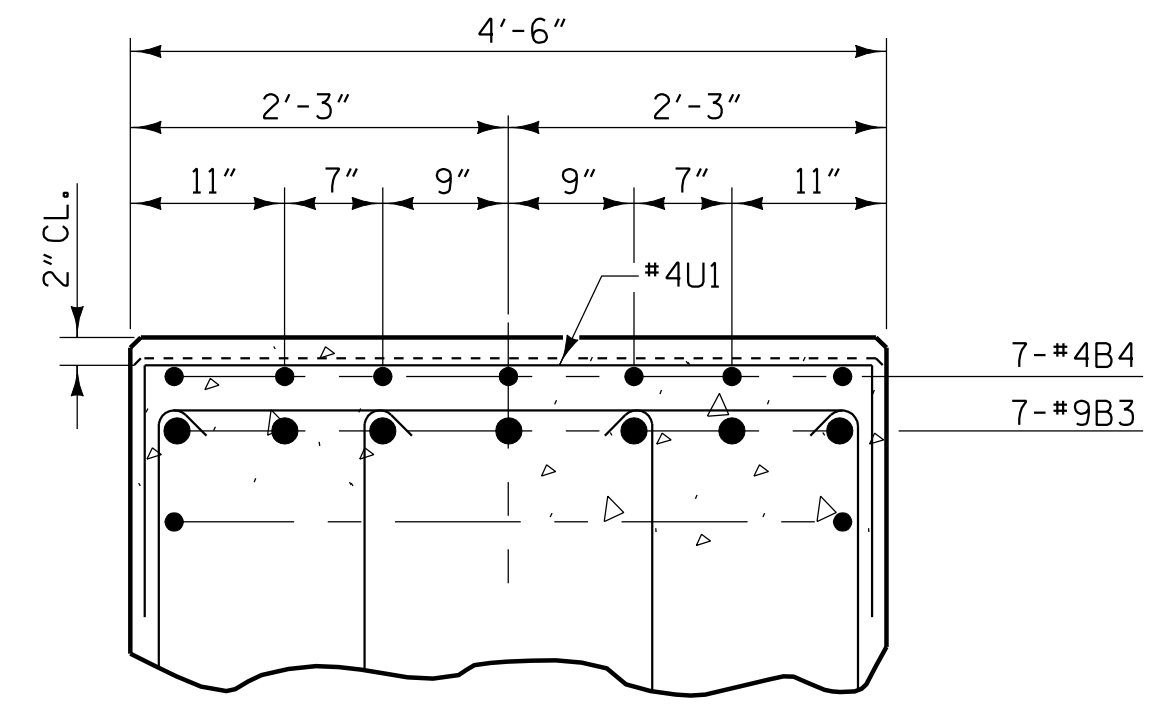


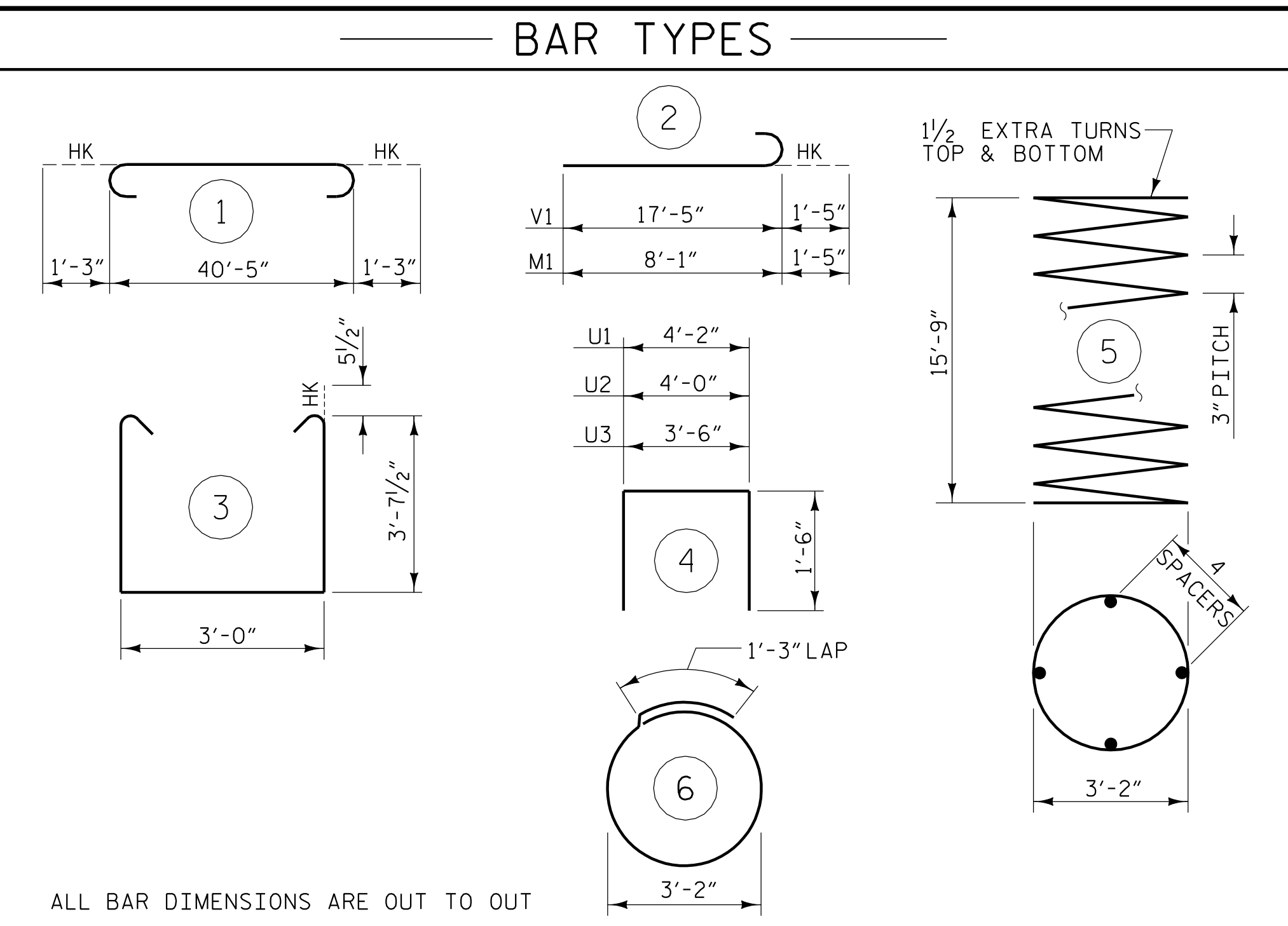
END ELEVATION



SECTION A-A

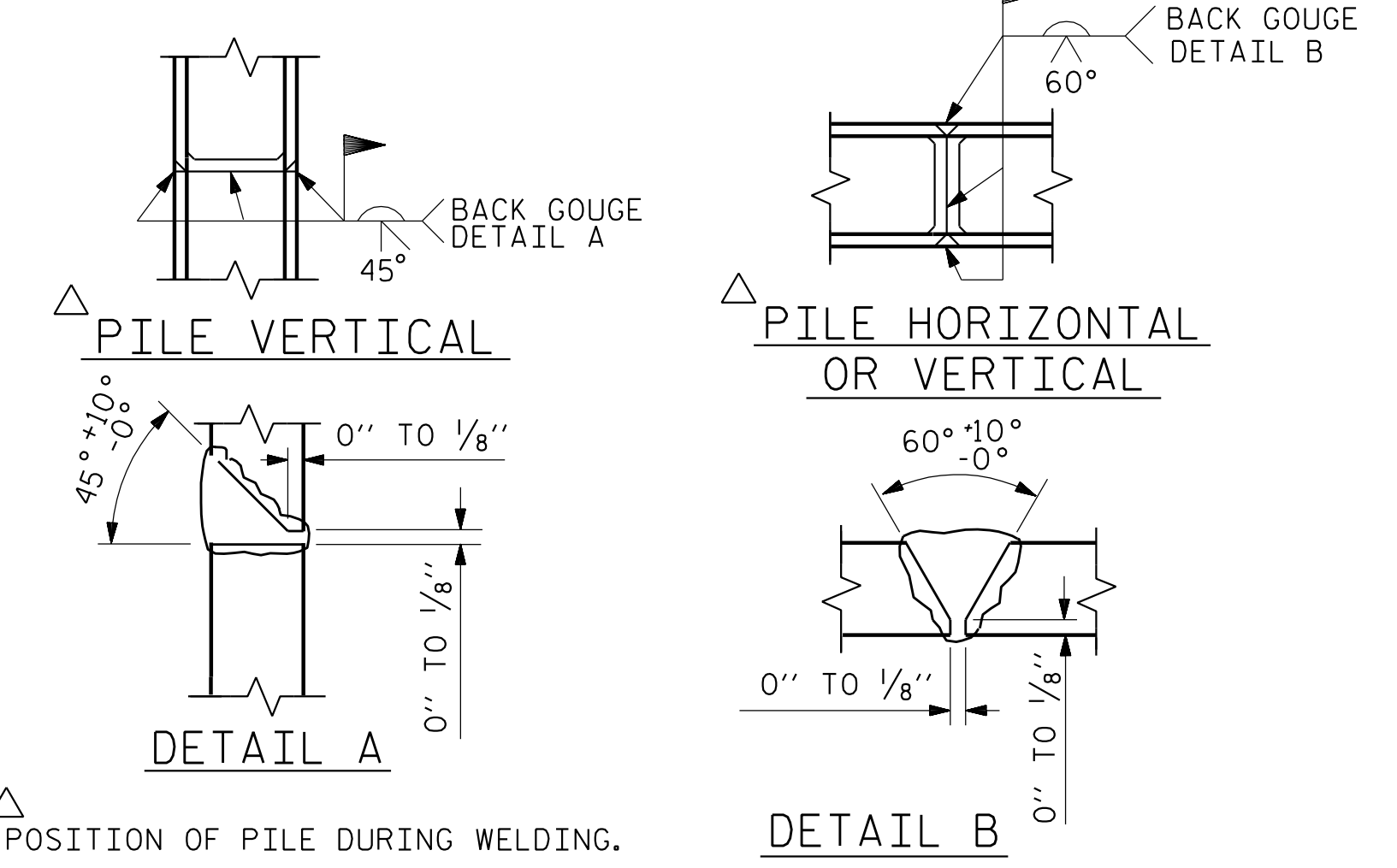


SECTION B-B



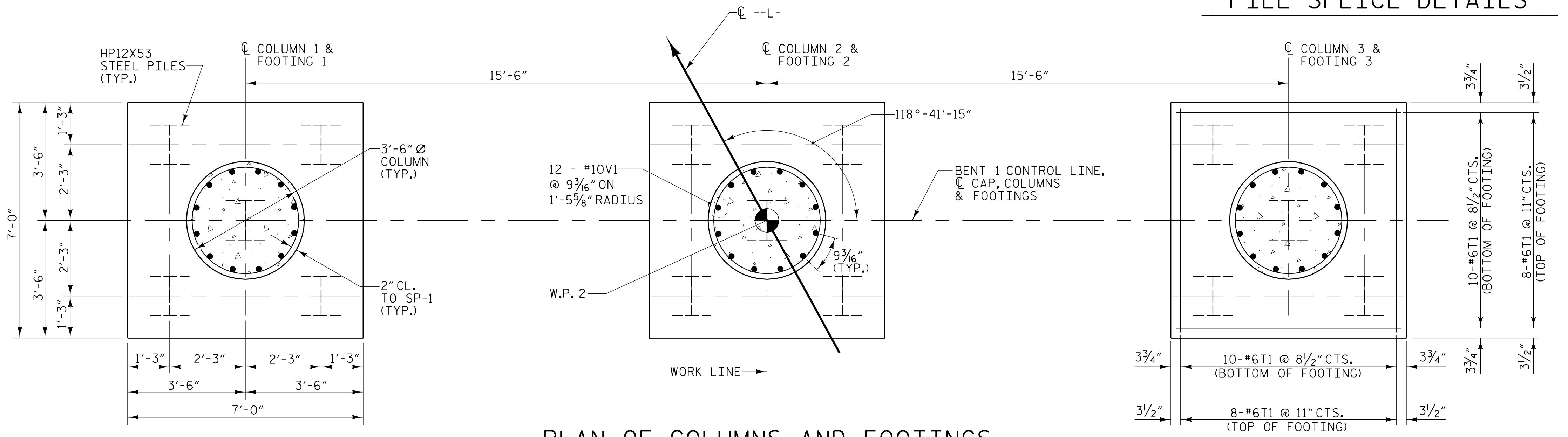
BAR TYPES

ALL BAR DIMENSIONS ARE OUT TO OUT
 ** THE SP-1 SPIRAL REINFORCING STEEL SHALL BE W31 OR D-31 COLD DRAWN WIRE OR #5 PLAIN OR DEFORMED BAR.



PILE SPLICE DETAILS

BILL OF MATERIAL					
BENT 1					
BAR	NO.	SIZE	TYPE	LENGTH	WEIGHT
B1	7	#9	STR	40'-5"	962
B2	6	#5	STR	40'-5"	253
B3	7	#9	1	42'-11"	1021
B4	14	#4	STR	4'-2"	39
M1	36	#10	2	9'-6"	1472
S1	104	#5	3	11'-2"	1211
S2	33	#4	6	11'-3"	248
T1	108	#6	STR	6'-6"	1054
U1	18	#4	4	7'-2"	86
U2	8	#4	4	7'-0"	37
U3	8	#4	4	6'-6"	35
V1	36	#10	2	18'-10"	2917
TOTAL REINFORCING STEEL					9335 lbs.
SPIRAL COLUMN REINFORCING STEEL (SP)					
SP-1	3	**	5	646'-1"	2022
TOTAL SPIRAL COLUMN REINFORCING STEEL					2022 lbs.
CLASS "A" CONCRETE - CU. YARDS					
POUR 1 - FOOTINGS					16.3 CU. YDS.
POUR 2 - COLUMNS					16.7 CU. YDS.
POUR 3 - CAP					27.7 CU. YDS.
TOTAL CLASS "A" CONCRETE					60.7 CU. YDS.
HP12X53 STEEL PILES					
15 PILES REQUIRED - LIN. FEET					1050
PILE REDRIVES					8 EA.



PLAN OF COLUMNS AND FOOTINGS

(DIMENSIONS AND REINFORCING STEEL ARE TYPICAL FOR EACH COLUMN AND FOOTING)



PROJECT NO. W-5518
 COLUMBUS COUNTY
 STATION: 24+06.36 -L- POT

SHEET 2 OF 2

STATE OF NORTH CAROLINA
 DEPARTMENT OF TRANSPORTATION
 RALEIGH
 SUBSTRUCTURE
 BENT 1



REVISIONS						SHEET NO.
NO.	BY:	DATE:	NO.	BY:	DATE:	
1			3			TOTAL SHEETS
2			4			33

10/2/2015 4:42:46 PM RA:\Structures\W5518\SMU\B1.02.dgn
 DRAWN BY: W. B. ALLEN DATE: 6/15
 CHECKED BY: Z. H. BROWN DATE: 6/15
 DESIGN ENGINEER OF RECORD: L. K. AUSTIN DATE: 8/15