

NOTES

THE PARAPET IN THE CONTINUOUS UNIT SHALL NOT BE CAST UNTIL ALL SLAB CONCRETE IN THAT SPAN HAS BEEN CAST AND HAS REACHED A MINIMUM COMPRESSIVE STRENGTH OF 3,000 PSI.

WHEN EVAZOTE JOINT SEAL IS REQUIRED, THE JOINT IN THE DECK SHALL BE SAWED PRIOR TO THE CASTING OF THE PARAPET.

ALL REINFORCING STEEL IN PARAPET SHALL BE EPOXY COATED.

THE #5S1 & #5S2 BARS MAY BE SHIFTED SLIGHTLY IN ORDER TO MAINTAIN A 2" MINIMUM CLEARANCE TO THE 1/2" EXPANSION JOINT MATERIAL IN PARAPET.

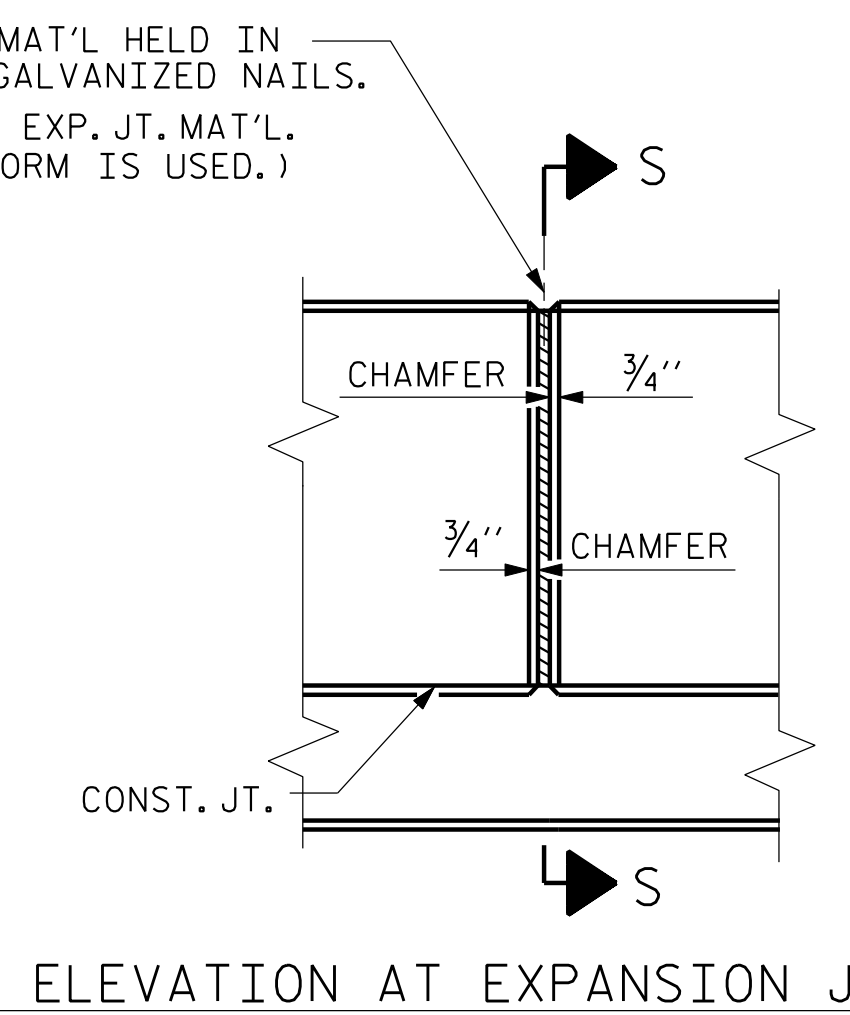
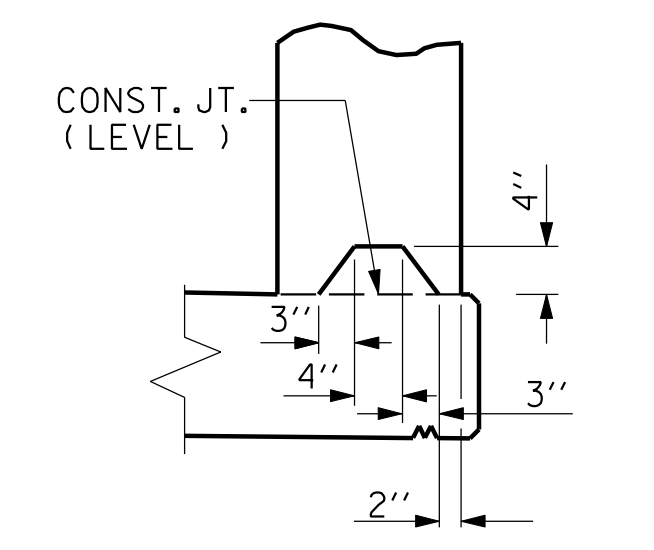
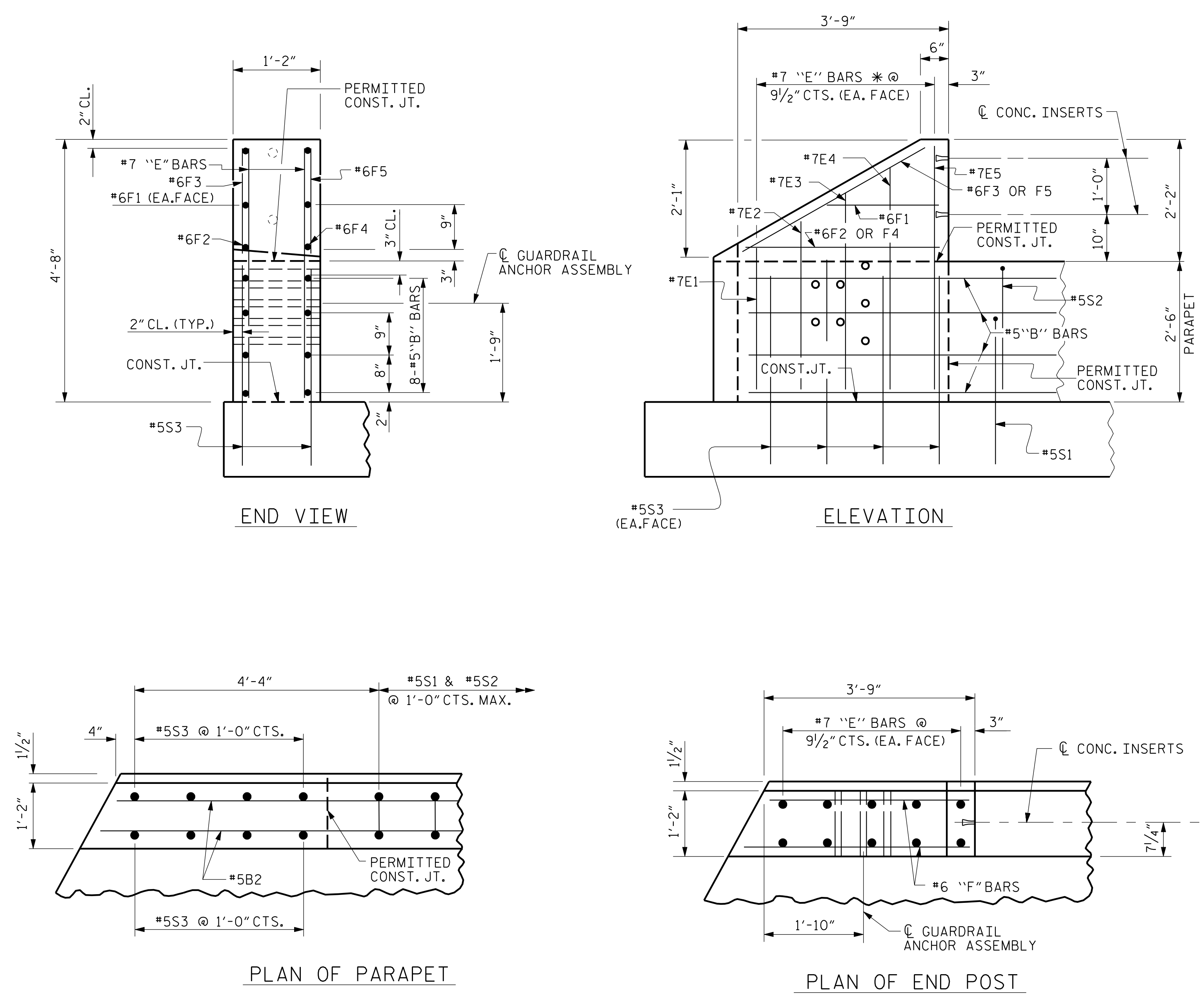
FOR DETAILS OF CONCRETE INSERTS IN END POSTS, SEE "RAIL POST SPACINGS AND END OF RAIL DETAILS" SHEET.

FOR DETAILS OF GUARDRAIL ANCHOR ASSEMBLIES, SEE "GUARDRAIL ANCHORAGE DETAILS FOR METAL RAILS" SHEET.

THE #5S3 BARS SHALL BE INSTALLED, USING AN ADHESIVE ANCHORING SYSTEM, AFTER SAWING THE JOINT. THE YIELD LOAD FOR THE #5S2 BARS IS 18.6 KIPS. FIELD TESTING FOR THE ADHESIVE BONDING SYSTEM IS NOT REQUIRED.

VERTICAL GROOVED CONTRACTION JOINTS, 1/2" IN DEPTH, SHALL BE TOOLED IN ALL EXPOSED FACES OF THE PARAPET AND IN ACCORDANCE WITH ARTICLE 825-10(B) OF THE STANDARD SPECIFICATIONS. THE CONTRACTION JOINT SHALL BE LOCATED AT EACH THIRD POINT BETWEEN PARAPET EXPANSION JOINTS. ONLY ONE CONTRACTION JOINT IS REQUIRED AT MIDPOINT OF PARAPET SEGMENTS LESS THAN 20 FEET IN LENGTH AND NO CONTRACTION JOINTS ARE REQUIRED FOR THOSE SEGMENTS LESS THAN 10 FEET IN LENGTH.

BAR TYPE					
ALL BAR DIMENSIONS ARE OUT TO OUT					
BILL OF MATERIAL					
FOR CONCRETE PARAPET & END POST ONLY					
BAR	NO.	SIZE	TYPE	LENGTH	WEIGHT
*B1	96	#5	STR	26'-2"	2620
*B2	64	#5	STR	15'-2"	1012
*E1	8	#7	STR	2'-9"	45
*E2	8	#7	STR	3'-2"	52
*E3	8	#7	STR	3'-7"	59
*E4	8	#7	STR	4'-0"	65
*E5	8	#7	STR	4'-4"	71
*F1	8	#6	STR	2'-0"	24
*F2	4	#6	STR	3'-5"	21
*F3	4	#6	STR	3'-7"	22
*F4	4	#6	STR	3'-11"	24
*F5	4	#6	STR	3'-11"	24
*S1	412	#5	1	5'-5"	2328
*S2	412	#5	2	5'-6"	2363
*S3	32	#5	STR	3'-0"	100
*EPOXY COATED REINFORCING STEEL					8830 LBS.
CLASS AA CONCRETE					47.1 CU. YDS.
CONCRETE PARAPET					427.22 LIN. FT.



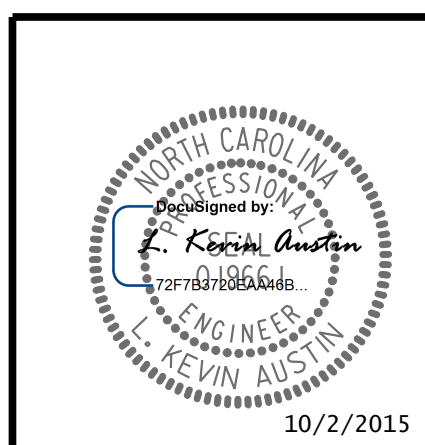
PARAPET AND END POST FOR TWO BAR RAIL

PROJECT NO. W-5518  
COLUMBUS COUNTY  
 STATION: 24+06.36 -L- POT

SHEET 2 OF 2

STATE OF NORTH CAROLINA  
 DEPARTMENT OF TRANSPORTATION  
 RALEIGH  
 SUPERSTRUCTURE  
 1'-2" x 2'-6"  
 CONCRETE PARAPET  
 AND END POST

REVISIONS						SHEET NO.
NO.	BY:	DATE:	NO.	BY:	DATE:	TOTAL SHEETS
1			3			33
2			4			



DRAWN BY : W. B. ALLEN DATE : 5/15  
 CHECKED BY : Z. H. BROWN DATE : 6/15  
 DESIGN ENGINEER OF RECORD: L. K. AUSTIN DATE : 8/15

10/2/2015 4:50:17 PM R:\Structures\W5518\SMU\_PP\_02.dgn