

FONDATION LAYOUT

NOTES

- ALL PILES AT END BENT 1, BENT 1 AND END BENT 2 ARE HP 12 X 53.
- END BENT BRACE PILES ARE TO BE BATTERED AT 3:12.
- DIMENSIONS LOCATING PILES ARE SHOWN TO THE PILE CENTERLINE.
- FOR PILES, SEE SECTION 450 OF THE STANDARD SPECIFICATIONS.
- PILES AT END BENT NO. 1 ARE DESIGNED FOR A FACTORED RESISTANCE OF 110 TONS PER PILE.
- DRIVE PILES AT END BENT NO. 1 TO A REQUIRED DRIVING RESISTANCE OF 150 TONS PER PILE.
- PILES AT BENT NO. 1 ARE DESIGNED FOR A FACTORED RESISTANCE OF 115 TONS PER PILE.
- DRIVE PILES AT BENT NO. 1 TO A REQUIRED DRIVING RESISTANCE OF 155 TONS PER PILE.
- PILES AT END BENT NO. 2 ARE DESIGNED FOR A FACTORED RESISTANCE OF 110 TONS PER PILE.
- DRIVE PILES AT END BENT NO. 2 TO A REQUIRED DRIVING RESISTANCE OF 150 TONS PER PILE.

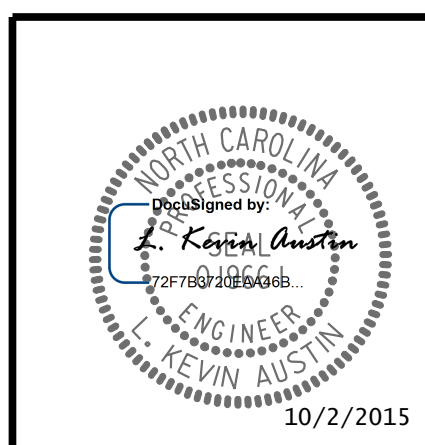
- OBSERVE A 3 MONTH WAITING PERIOD AFTER CONSTRUCTING THE EMBANKMENT WITH A SURCHARGE OF 2 FT. ABOVE FINISHED GRADE BEFORE BEGINNING END BENT CONSTRUCTION AT END BENT NO. 1. FOR SURCHARGE, SEE EMBANKMENT SETTLEMENT GAUGES PROVISION.
- OBSERVE A 3 MONTH WAITING PERIOD AFTER CONSTRUCTING THE EMBANKMENT TO TO FINISHED GRADE BEFORE BEGINNING END BENT CONSTRUCTION AT END BENT NO. 2
- FOR EMBANKMENT MONITORING, SEE EMBANKMENT SETTLEMENT GAUGES PROVISION.
- TESTING THE FIRST PRODUCTION PILE AT END BENT NO. 2 AND BENT NO. 1 WITH THE PDA DURING DRIVING, RESTRIKING OR REDRIVING IS REQUIRED. FOR PDA TESTING, SEE SECTION 450 OF THE STANADRD SPECIFICATIONS AND FOR PILE DRIVING CRITERIA, SEE PILES (LRFD) PROVISION.

PROJECT NO. W-5518
COLUMBUS COUNTY
 STATION: 24+06.36 -L- POT

SHEET 2 OF 4

STATE OF NORTH CAROLINA
 DEPARTMENT OF TRANSPORTATION
 RALEIGH
GENERAL DRAWING
 FOR BRIDGE ON -L- (SR 1574)
 OVER -Y- (US 74) BETWEEN
 SR 1414 AND SR 1526

REVISIONS						SHEET NO.
NO.	BY:	DATE:	NO.	BY:	DATE:	TOTAL SHEETS
1			3			33
2			4			



DRAWN BY : W. B. ALLEN DATE : 6/15
 CHECKED BY : Z. H. BROWN DATE : 6/15
 DESIGN ENGINEER OF RECORD: L. K. AUSTIN DATE : 8/15

10/2/2015 1:46:16 PM R:\Structures\W5518\SMU_FL_01.dgn