

SIGN NUMBER: T301 TYPE: STATIONARY QUANTITY: SEE PLANS SIGN WIDTH: 3'-0" HEIGHT: 1'-6" TOTAL AREA: 4.5 Sq.Ft. BORDER TYPE: INSET RECESS: 0.47" WIDTH: 0.63" RADII: 1.5" NO. Z BARS: LENGTH:	BACKG COLOR: Fluorescent Orange COPY COLOR: Black SYMBOL X Y WID HT MAT'L: 0.080" (2.0 mm) ALUMINUM	DESIGN BY: AM Thigpen PROJECT ID: W-5518 CHECKED BY: J Lewis LOCATION: Jun 04, 2015 DIV: 06
------------------------------------------------------------------------------------------------------------------------------------------------------------------------------------------------------------------------------	--------------------------------------------------------------------------------------------------------------------------	------------------------------------------------------------------------------------------------------------

BORDER  
R=1.5"  
TH=0.63"  
IN=0.47"

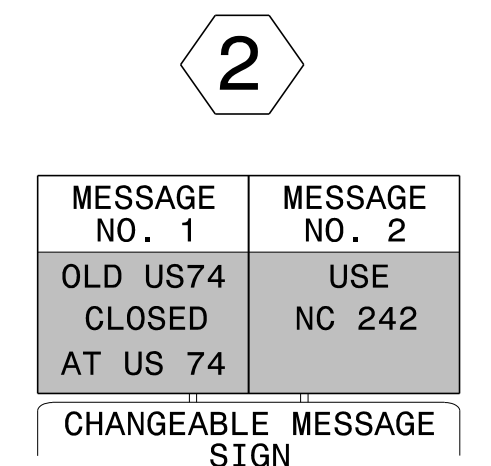
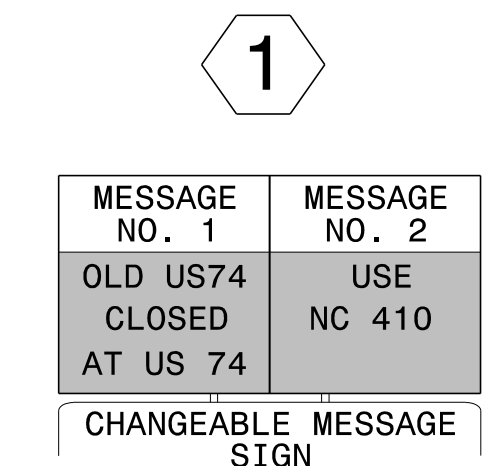
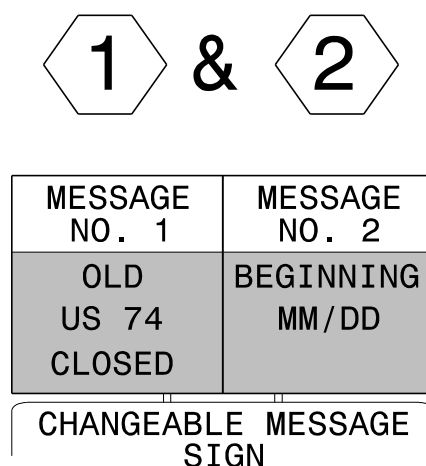
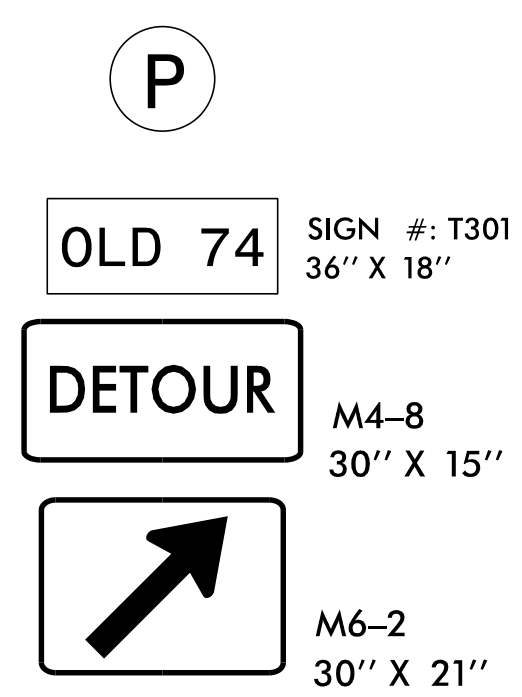
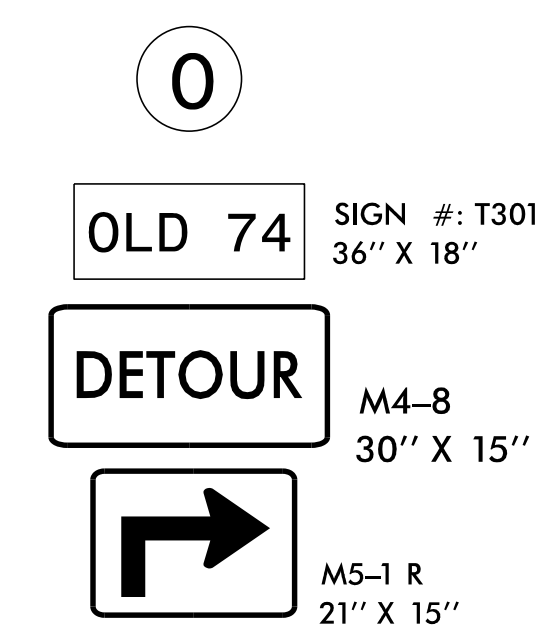
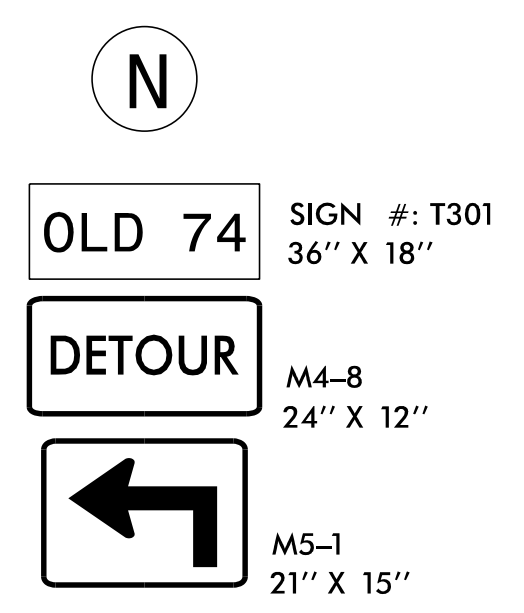
Panel Style: construction\_guide.ssi  
M.U.T.C.D.: 2009 Edition

Spacing Factor is 1 unless specified otherwise

LETTER POSITIONS						
Letter locations are panel edge to lower left corner						
	O	L	D	7	4	Series/Size Text Length
	7.2	11.2	14.4	17.2	22.2	25.6
						C 2000
						21.5

FILENAME: W-5518\_Guidesign\_Eng1ish

NORTH CAROLINA D.O.T. SIGN DETAIL

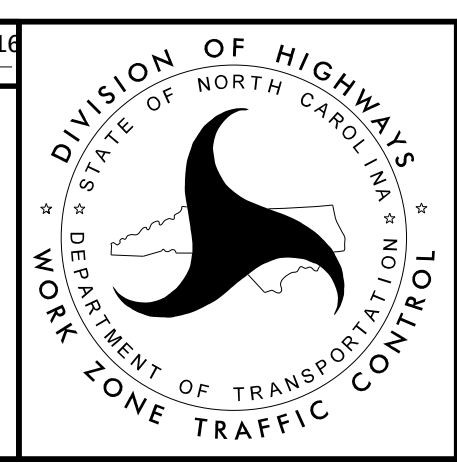
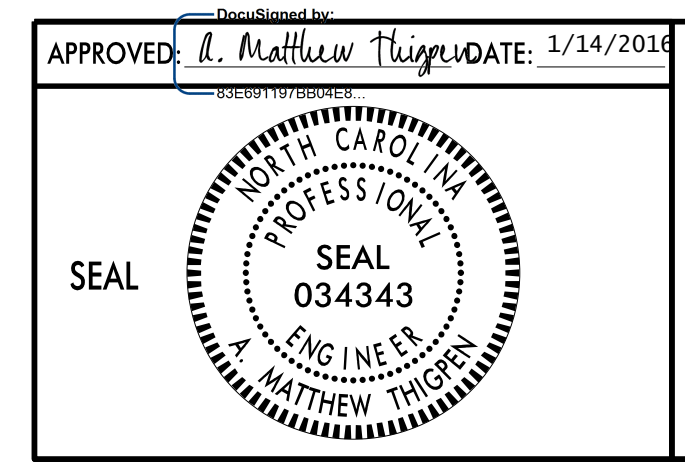


DISPLAY 7 DAYS PRIOR TO OLD US 74 TEMPORARY CLOSURE

DISPLAY WHILE OLD US 74 IS CLOSED TO THROUGH TRAFFIC

DISPLAY WHILE OLD US 74 IS CLOSED TO THROUGH TRAFFIC

MMM = 2 LETTER MONTH ABBREVIATION  
DD = 2 DIGIT DATE



OFF-SITE DETOUR ROUTE AND SIGNING

I:\13\2016\1\13\2016\Prof\Raigh\38369.02\_Mulkey\_T02\_W-5518\cad\re\plan\set\Traffic\TrafficControl\W-5518\_tc\_tmp\_04.dgn  
 User: MThigpen