

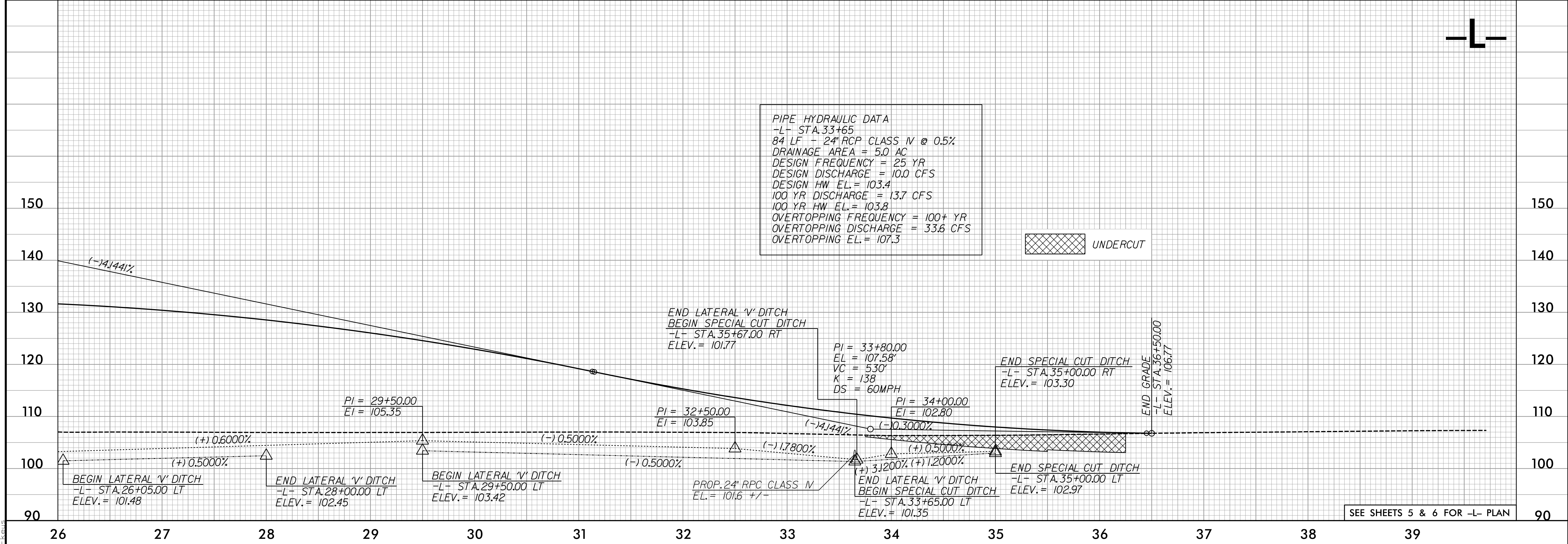
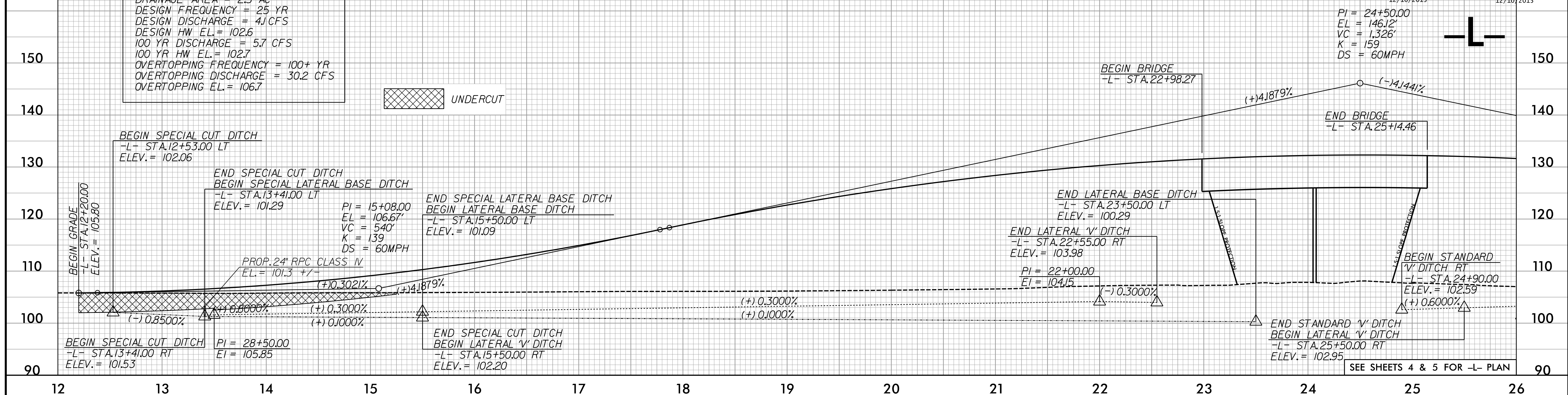
5/28/15

BM#81
BL STA 16+38 (177' RIGHT) =
-L- 21+16.49 (162.22' RT)
ELEV = 107.89



PROJECT REFERENCE NO. W-5518	SHEET NO. 8
ROADWAY DESIGN ENGINEER SEAL STEPHEN C. BROWN 12/17/2015	HYDRAULICS ENGINEER SEAL DAVID L. BOCKER 12/17/2015

PIPE HYDRAULIC DATA
-L- STA.13+41
72 LF - 24" RCP CLASS IV @ 0.5%
DRAINAGE AREA = 2.5 AC
DESIGN FREQUENCY = 25 YR
DESIGN DISCHARGE = 4.1 CFS
DESIGN HW EL. = 102.6
100 YR DISCHARGE = 5.7 CFS
100 YR HW EL. = 102.7
OVERTOPPING FREQUENCY = 100+ YR
OVERTOPPING DISCHARGE = 30.2 CFS
OVERTOPPING EL. = 106.7



PIPE HYDRAULIC DATA
-L- STA.33+65
84 LF - 24" RCP CLASS IV @ 0.5%
DRAINAGE AREA = 5.0 AC
DESIGN FREQUENCY = 25 YR
DESIGN DISCHARGE = 10.0 CFS
DESIGN HW EL. = 103.4
100 YR DISCHARGE = 13.7 CFS
100 YR HW EL. = 103.8
OVERTOPPING FREQUENCY = 100+ YR
OVERTOPPING DISCHARGE = 33.6 CFS
OVERTOPPING EL. = 107.3

12/10/2015
R:\Projects\W5518_rdy.plt.dgn

SEE SHEETS 4 & 5 FOR -L- PLAN

SEE SHEETS 5 & 6 FOR -L- PLAN