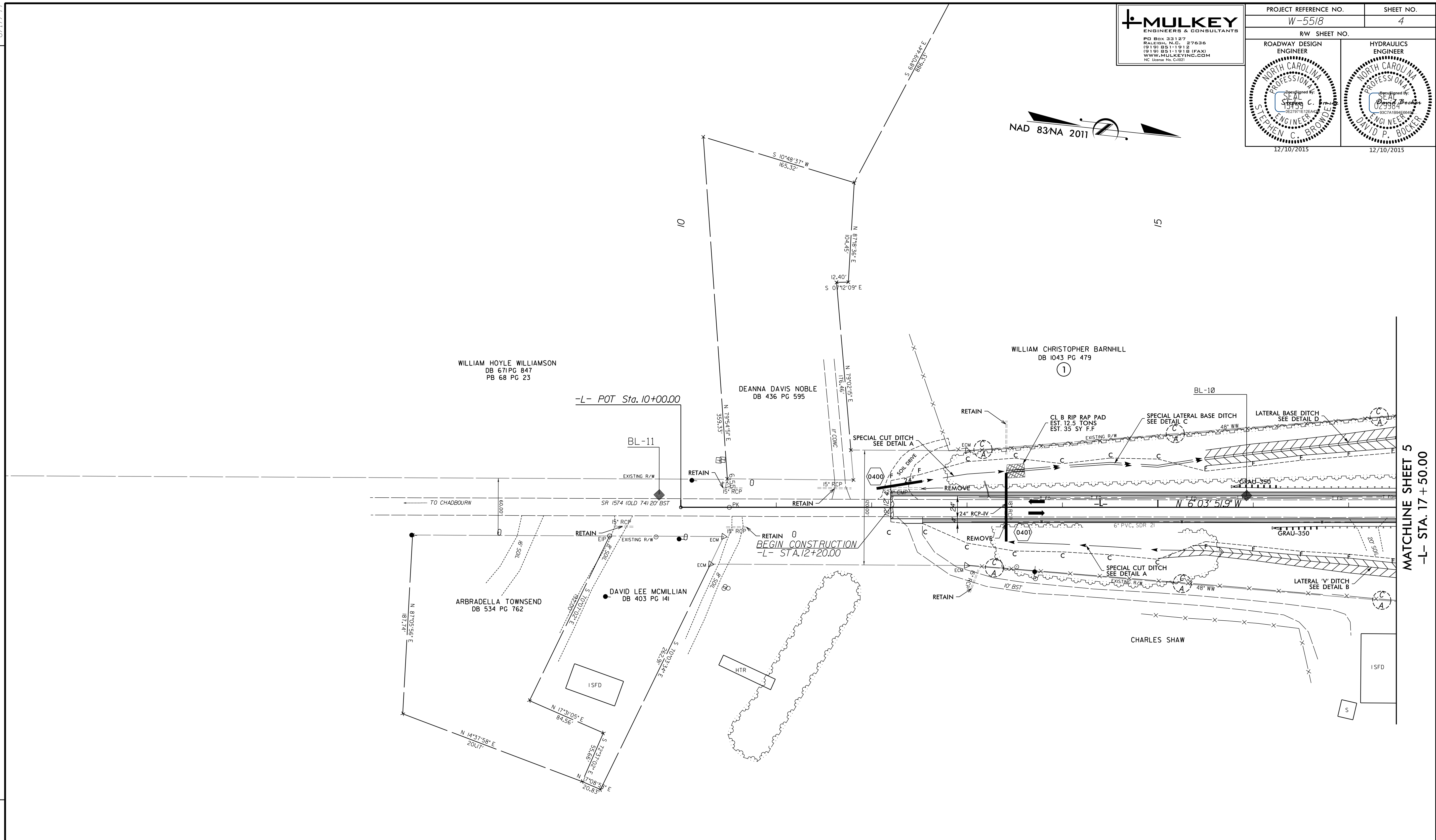


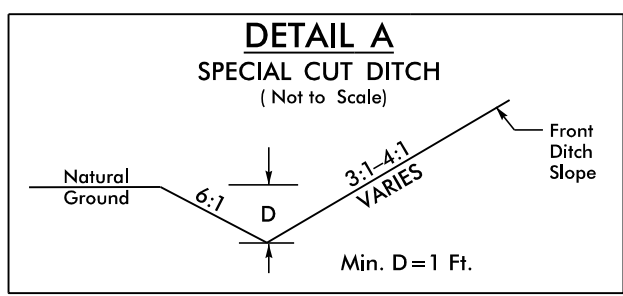
PROJECT REFERENCE NO. <i>W-5518</i>		SHEET NO. 4
RW SHEET NO.		HYDRAULICS ENGINEER
ROADWAY DESIGN ENGINEER		HYDRAULICS ENGINEER
STEPHEN C. BROWNE		DAVID P. BOCKER
12/10/2015		12/10/2015



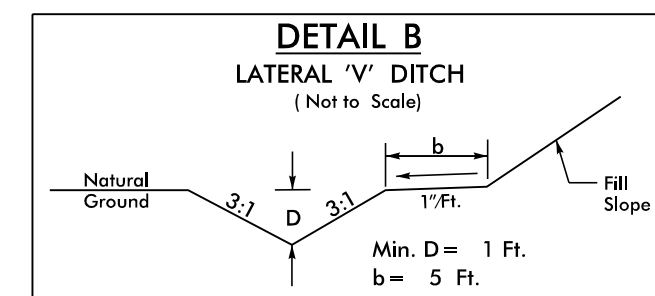
REVISIONS



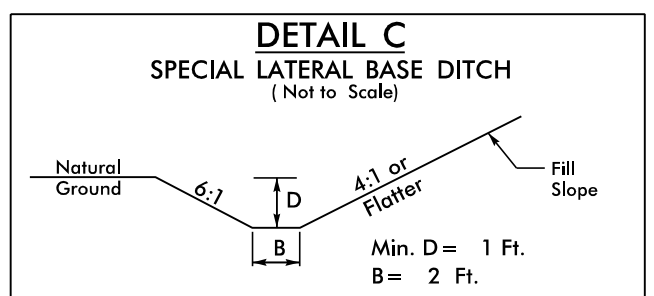
MATCHLINE SHEET 5
-L- STA. 17 + 50.00



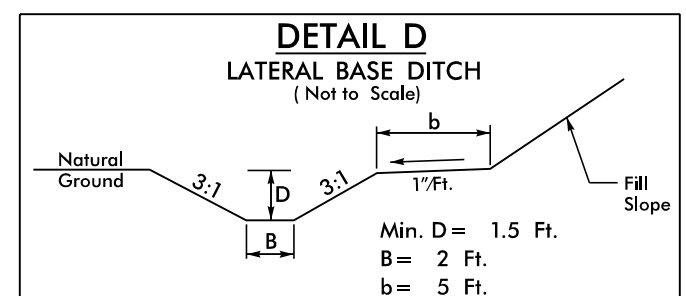
-L- STA. 12+53.00 TO STA. 13+41.00 LT
 -L- STA. 13+41.00 TO STA. 15+50.00 RT



-L- STA. 15+50.00 TO STA. 22+55.00 RT; DDE=370 CY



-L- STA. 13+41 TO STA. 15+50 LT; DDE=210 CY



-L- STA. 15+50 TO STA. 23+50 LT; DDE=1800 CY

12/10/2015
K:\Roadway\Proj\W5518_rdw_psh4.dgn