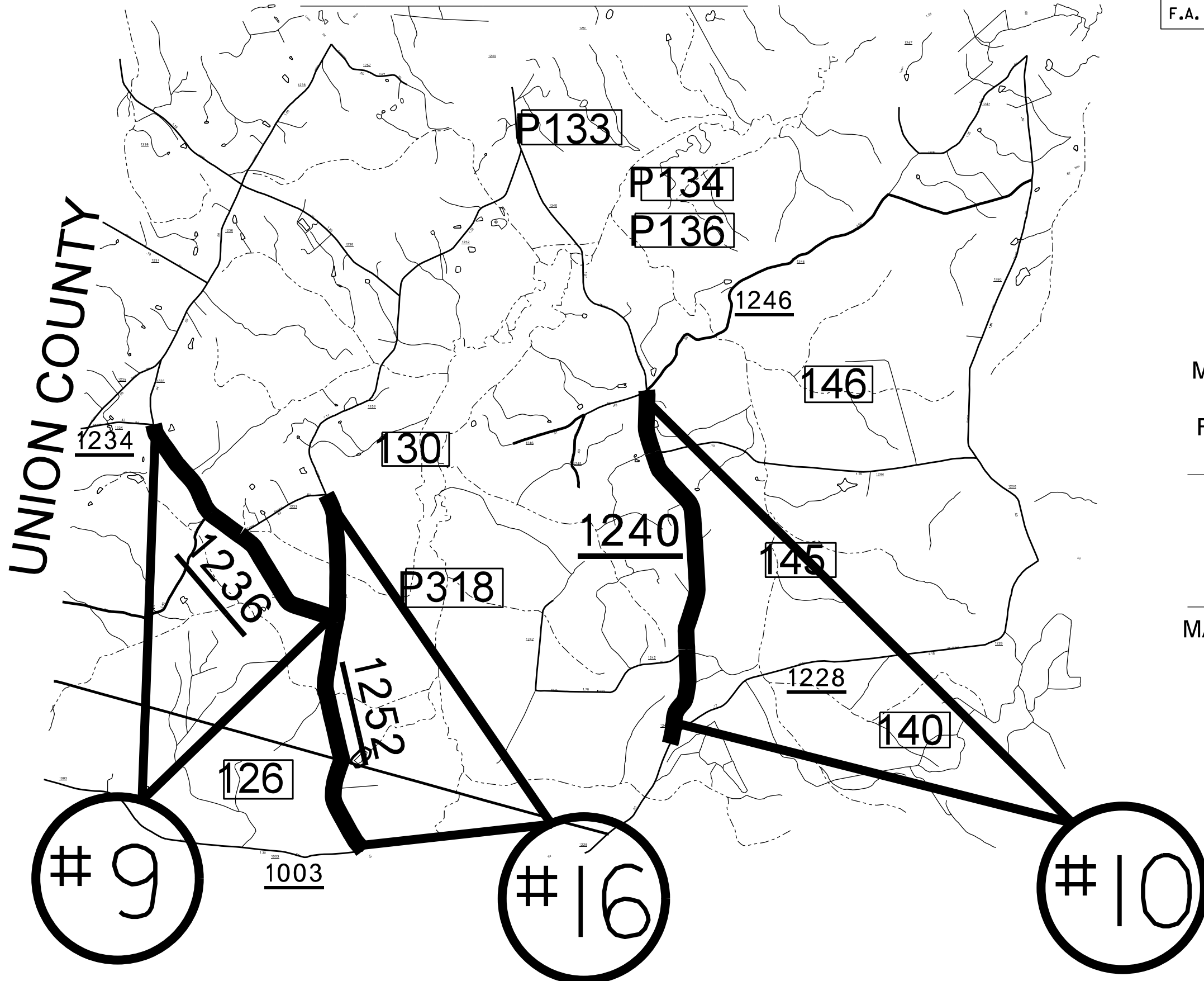


STATE	PROJECT NO.	SHEET NO.	TOTAL SHEETS
N.C.	2016CPT.10.17.10041.2 - ETC. 2016CPT.10.22.20041.7 - ETC. 2016CPT.10.35.20042.4 - ETC.	6	
F.A. PROJECT NO.			



ENLARGED MUNICIPAL AND SUBURBAN AREAS
ANSON COUNTY
 NORTH CAROLINA
PREPARED BY THE
 NORTH CAROLINA DEPARTMENT OF TRANSPORTATION
 DIVISION OF HIGHWAYS - DIVISION 10 DISTRICT 3



MAP #9 SR 1236 (UPPER WHITE STORE ROAD)
 1.81 MILES
 FROM SR 1252 (LOWER WHITE STORE ROAD)
 TO SR 1234 (STRAWN ROAD)

MAP #10 SR 1240 (MINERAL SPRINGS
 CHURCH ROAD) 2.40 MILES
 FROM SR 1228 (WHITE STORE ROAD)
 TO SR 1246 (MILLS ROAD)

MAP #16 SR 1252 (LOWER WHITE STORE ROAD)
 2.37 MILES
 FROM SR 1233 (TURKEY GROWING ROAD)
 TO SR 1003 (MONROE-WHITE STORE ROAD)