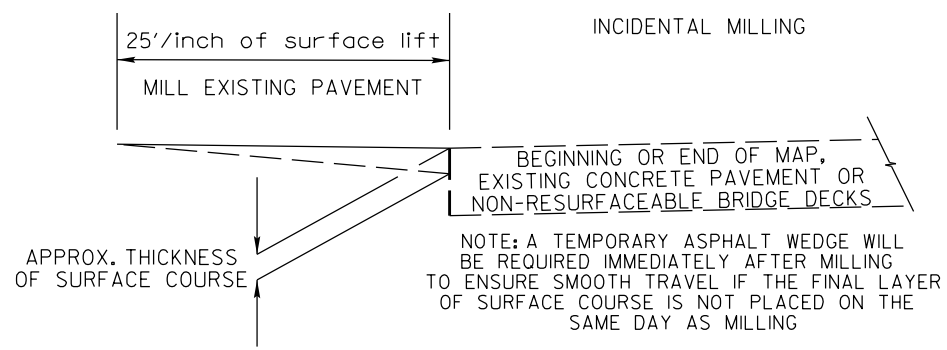


PAVEMENT SCHEDULE

C1	1½" ASPHALT CONCRETE SURFACE COURSE, TYPE S9.5B, AT AN AVERAGE RATE OF 168 LBS. PER SQ. YD.
C2	1½" ASPHALT CONCRETE SURFACE COURSE, TYPE S9.5C, AT AN AVERAGE RATE OF 168 LBS. PER SQ. YD.
S	PROP. SHOULDER GRADING
U	EXISTING PAVEMENT
V	0" - 1½" MILLING NEW ASPHALT TO BE PAVED BACK FLUSH

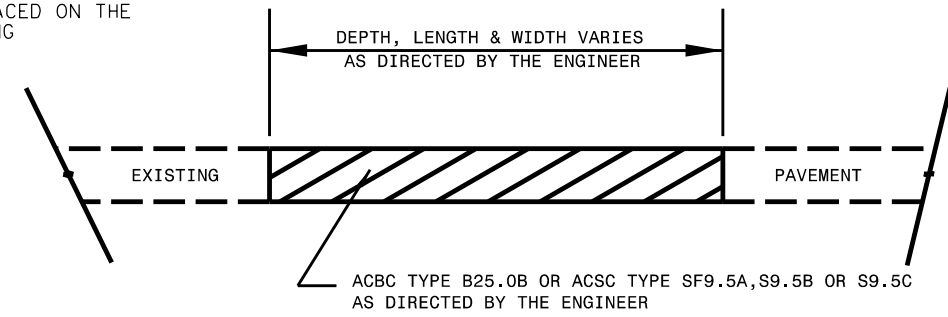
PROJECT REFERENCE NO.
2016CPT.05.05.10921.1

SHEET NO.
2

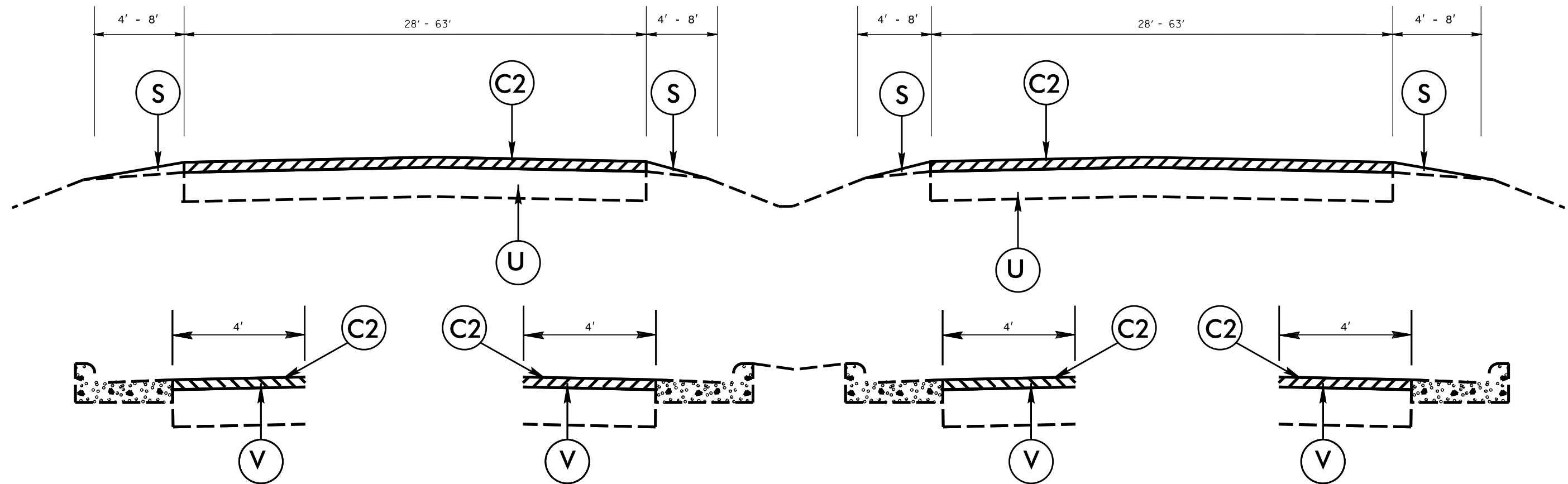


NOTES

ALL UNPAVED S.R. ROADS TO BE RESURFACED 50' FROM EDGE OF PAVEMENT OF MAIN PROJECT
 ALL PAVED S.R. ROADS TO BE RESURFACED TO THE ENDS OF THE RADII, OR AS DIRECTED BY THE ENGINEER.
 EDGES, PAVEMENT WIDENING, INTERSECTIONS AND BRIDGE FLARES ARE INCLUDED IN THE TABLE OF QUANTITIES.
 BRIDGES TO BE RESURFACED AT LOCATIONS AND TO DEPTH AS DIRECTED BY THE ENGINEER.



PATCHING EXISTING PAVEMENT
 PATCHING TO BE PERFORMED PRIOR TO MILL AND FILL OPERATION



TYPICAL SECTION NO. 1