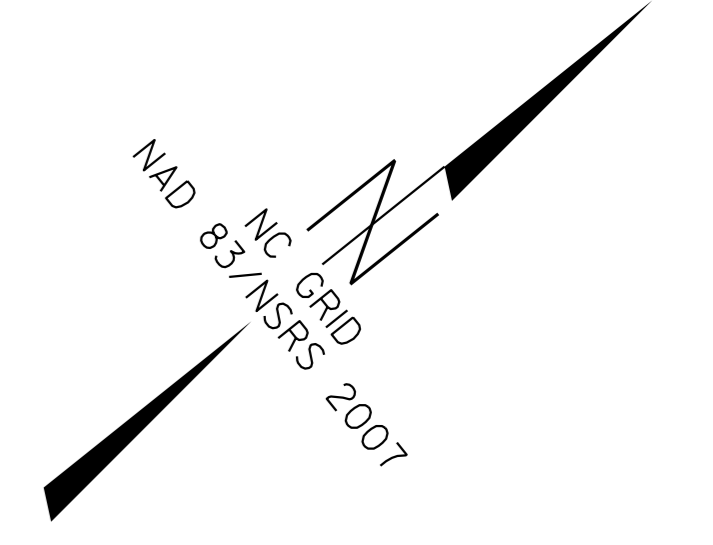
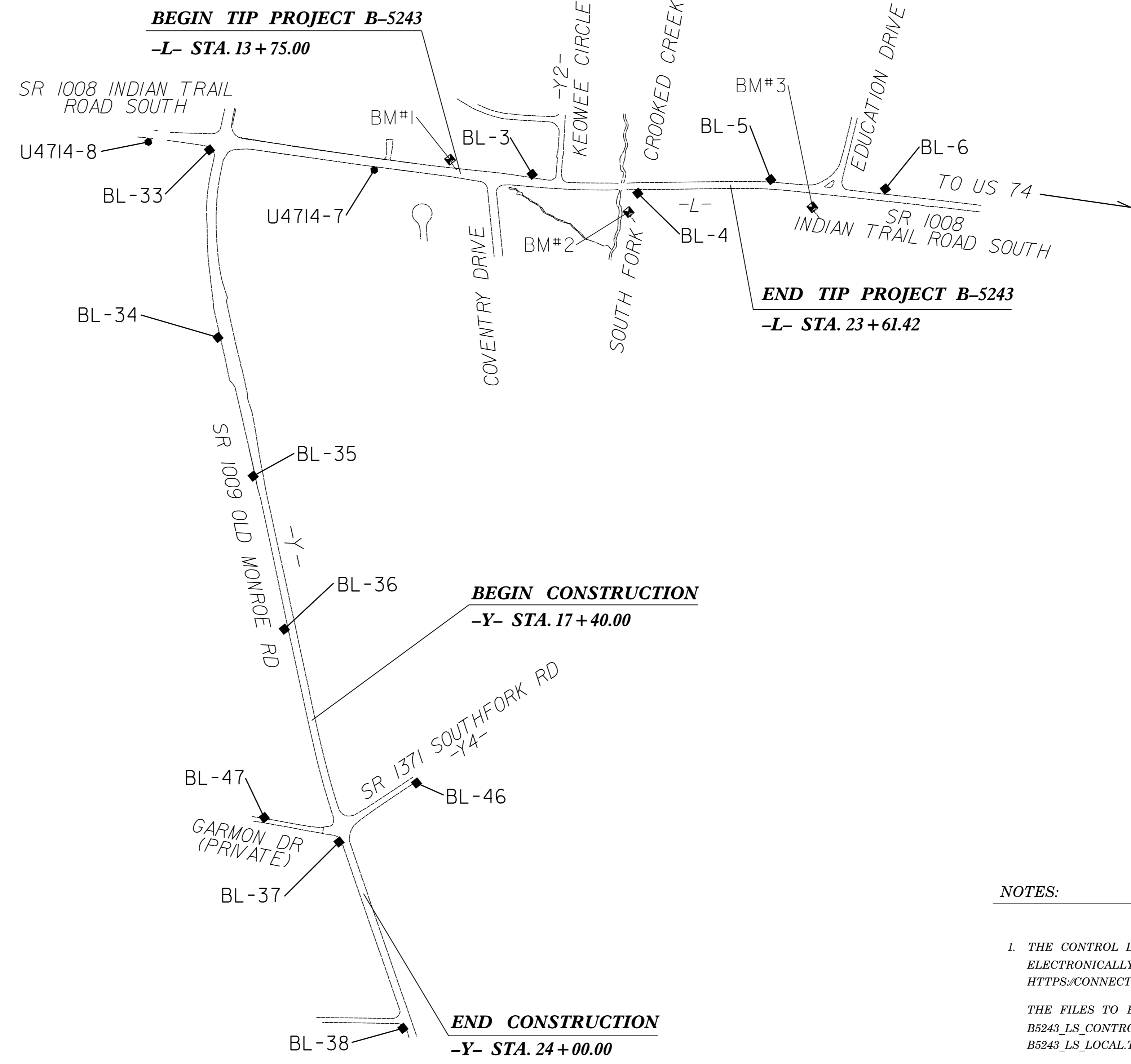
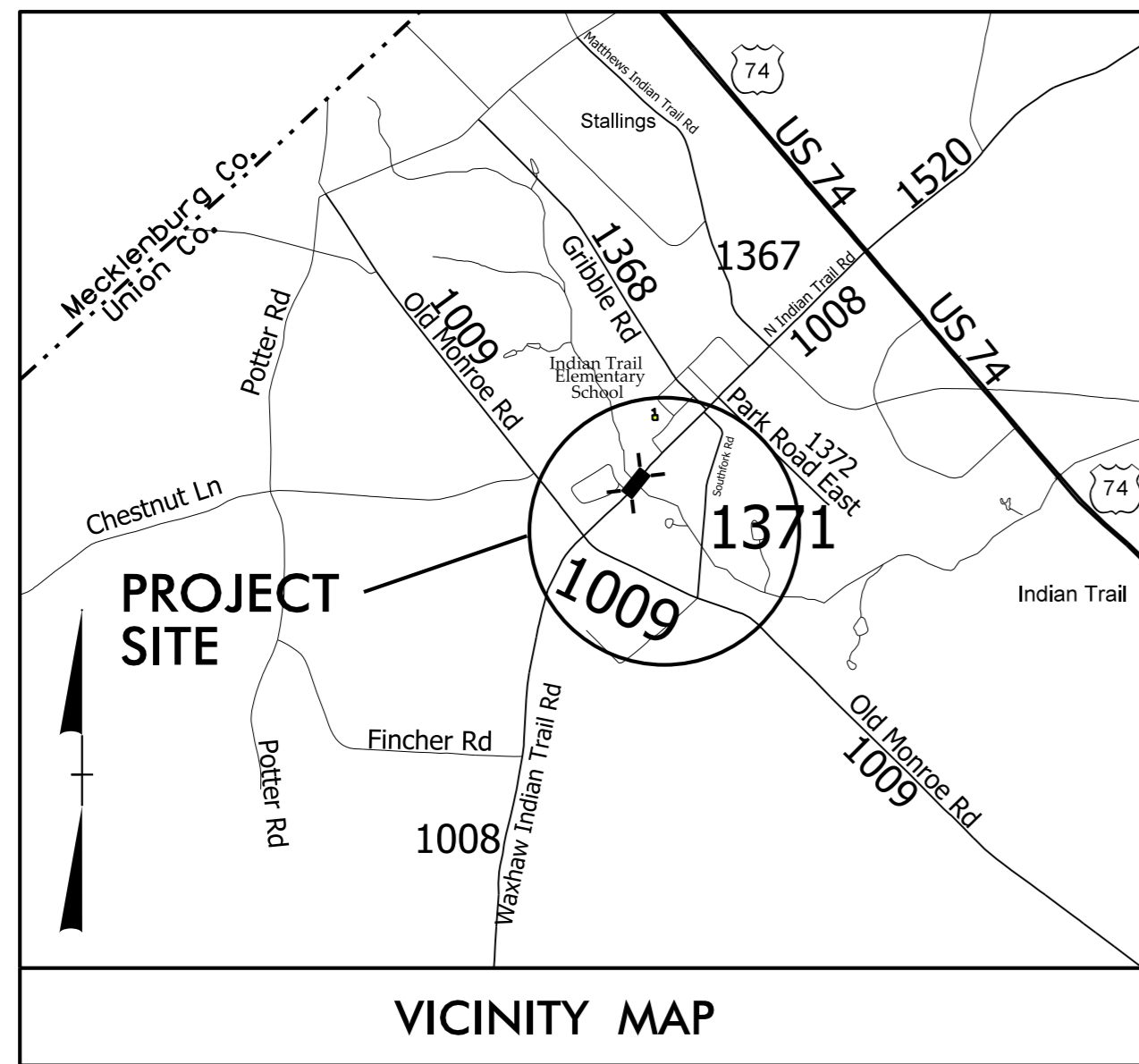


SURVEY CONTROL SHEET FINAL



DATUM DESCRIPTION

THE LOCALIZED COORDINATE SYSTEM DEVELOPED FOR THIS PROJECT IS BASED ON THE STATE PLANE COORDINATES ESTABLISHED BY NCDOT FOR MONUMENT "B5243-2" WITH NAD 83/NSRS 2007 STATE PLANE GRID COORDINATES OF NORTHING: 484815.283(±ft) EASTING: 1498556.393(±ft) ELEVATION: 683.30(±ft) THE AVERAGE COMBINED GRID FACTOR USED ON THIS PROJECT (GROUND TO GRID) IS: 0.999849 THE N.C. LAMBERT GRID BEARING AND LOCALIZED HORIZONTAL GROUND DISTANCE FROM "B5243-2" TO -L- STATION 13+75.00 IS S 42°04'36.4" W 324.01' ALL LINEAR DIMENSIONS ARE LOCALIZED HORIZONTAL DISTANCES VERTICAL DATUM USED IS NAVD 88

.....
BM1	ELEVATION - 691.33
N 484577	E 1498275
L STATION 13+31 46 LEFT	
RR SPIKE IN 15' OAK	
.....
BM2	ELEVATION - 672.58
N 484966	E 1498831
L STATION 19+89 94 RIGHT	
RR SPIKE IN 20' OAK	
.....
BM3	ELEVATION - 682.14
N 485500	E 1499237
L STATION 26+69 64 RIGHT	
RR SPIKE IN 24' OAK	
.....

- NOTES:**
- THE CONTROL DATA FOR THIS PROJECT CAN BE FOUND ELECTRONICALLY BY SELECTING PROJECT CONTROL DATA AT: [HTTPS://CONNECT.NCDOT.GOV/RESOURCES/LOCATION](https://connect.ncdot.gov/resources/location)
THE FILES TO BE FOUND ARE AS FOLLOWS:
B5243_LS_CONTROL.TXT
B5243_LS_LOCAL.TXT
 - SITE CALIBRATION INFORMATION HAS NOT BEEN PROVIDED FOR THIS PROJECT. IF FURTHER INFORMATION IS NEEDED, PLEASE CONTACT THE LOCATION AND SURVEYS UNIT.
 - PROJECT CONTROL ESTABLISHED USING GLOBAL POSITIONING SYSTEM, UTILIZING THE NCGS RTN SYSTEM (VRS).
MONUMENTS USED OR SET FOR PROJECT CONTROL BY THE NCDOT LOCATION AND SURVEYS UNIT:
● INDICATES GEODETIC CONTROL MONUMENTS FOR HORIZONTAL CONTROL
■ INDICATES BASELINE MONUMENTS FOR HORIZONTAL PROJECT CONTROL
✱ INDICATES BENCHMARKS FOR VERTICAL CONTROL

BL	POINT	DESC.	NORTH	EAST	ELEVATION	L STATION	OFFSET
8	U4714-8		483758.3140	1497537.3690	723.23	OUTSIDE PROJECT LIMITS	
7	U4714-7		484337.5870	1498132.2920	705.51	10+61.56	27.46 RT
1	B5243-1		484358.4930	1498146.1750	705.08	10+86.00	21.89 RT
3	BL-3		484777.4570	1498504.1900	683.10	16+34.94	30.91 LT
4	BL-4		485034.8140	1498798.7530	671.98	20+23.54	25.87 RT
5	BL-5		485444.4770	1499062.8930	683.88	25+07.63	22.34 LT
6	BL-6		485749.0960	1499350.4400	687.14	29+25.12	32.02 LT

NOTE: DRAWING NOT TO SCALE

TBL 14/05/06
04_AUG-2015 14:04 105243_1s_1C-1.dgn
1484358493