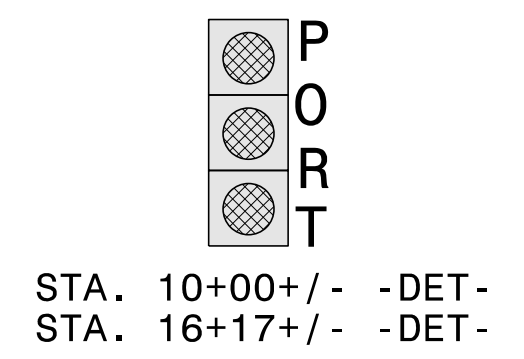
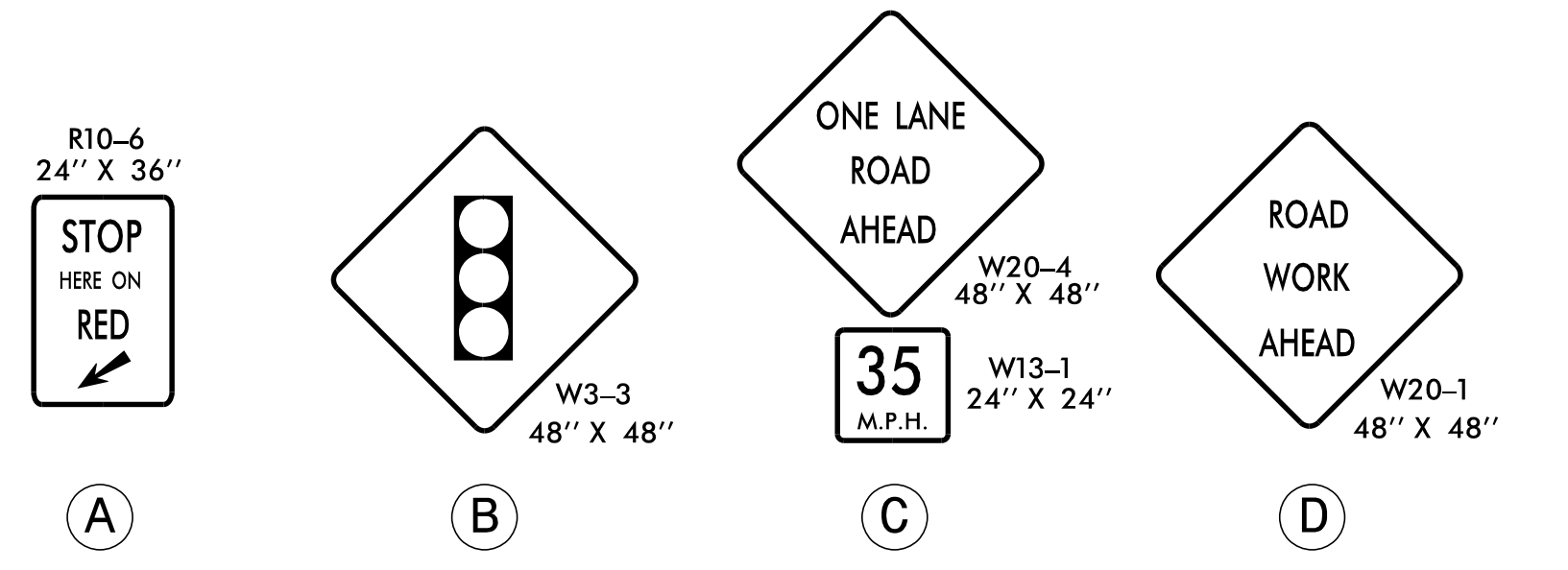
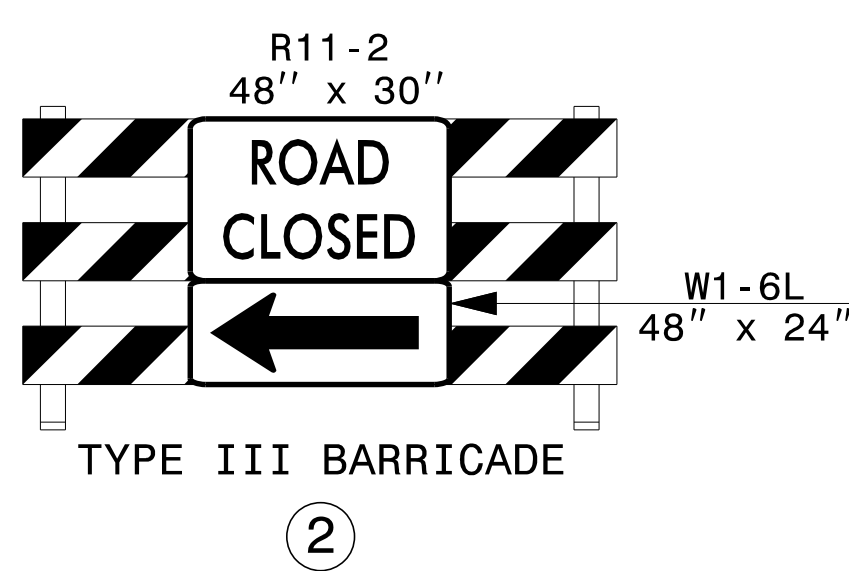
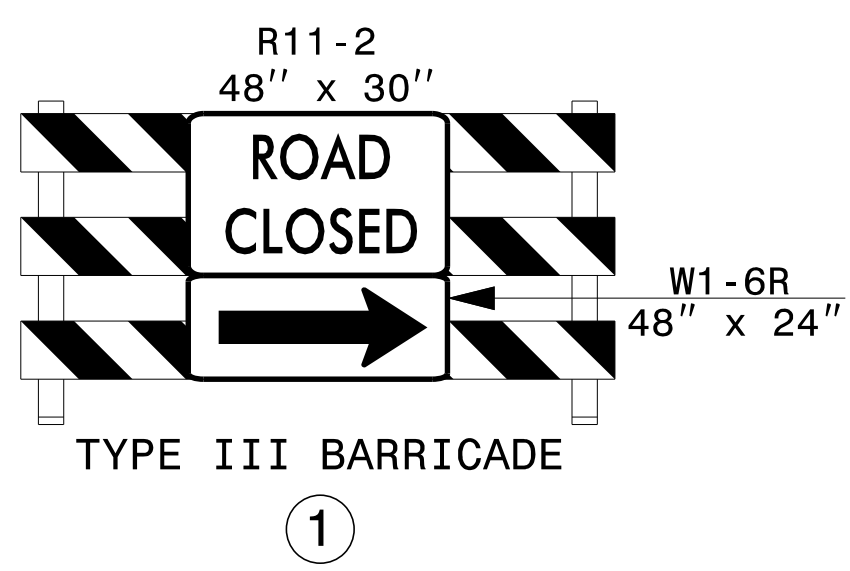
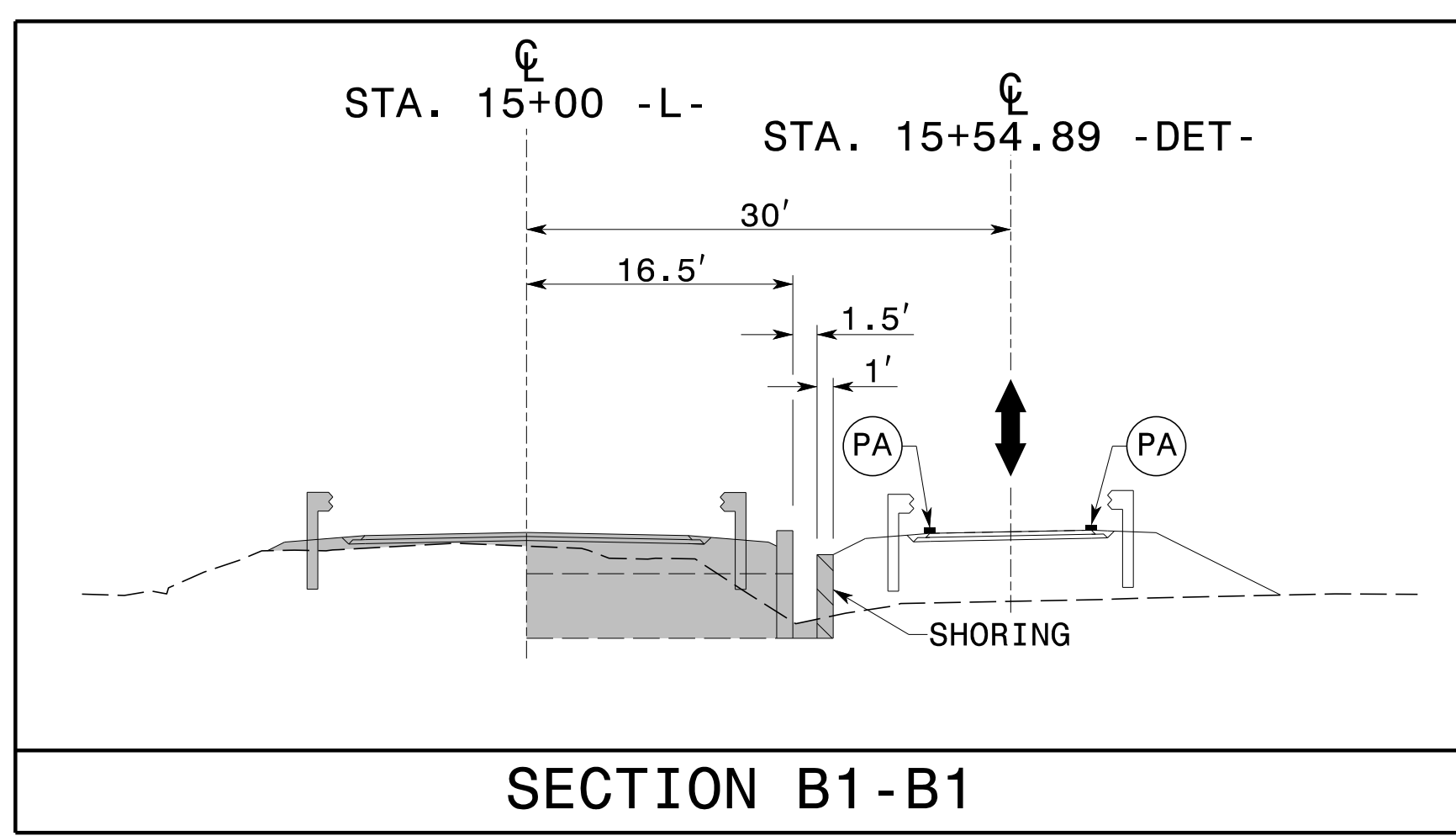
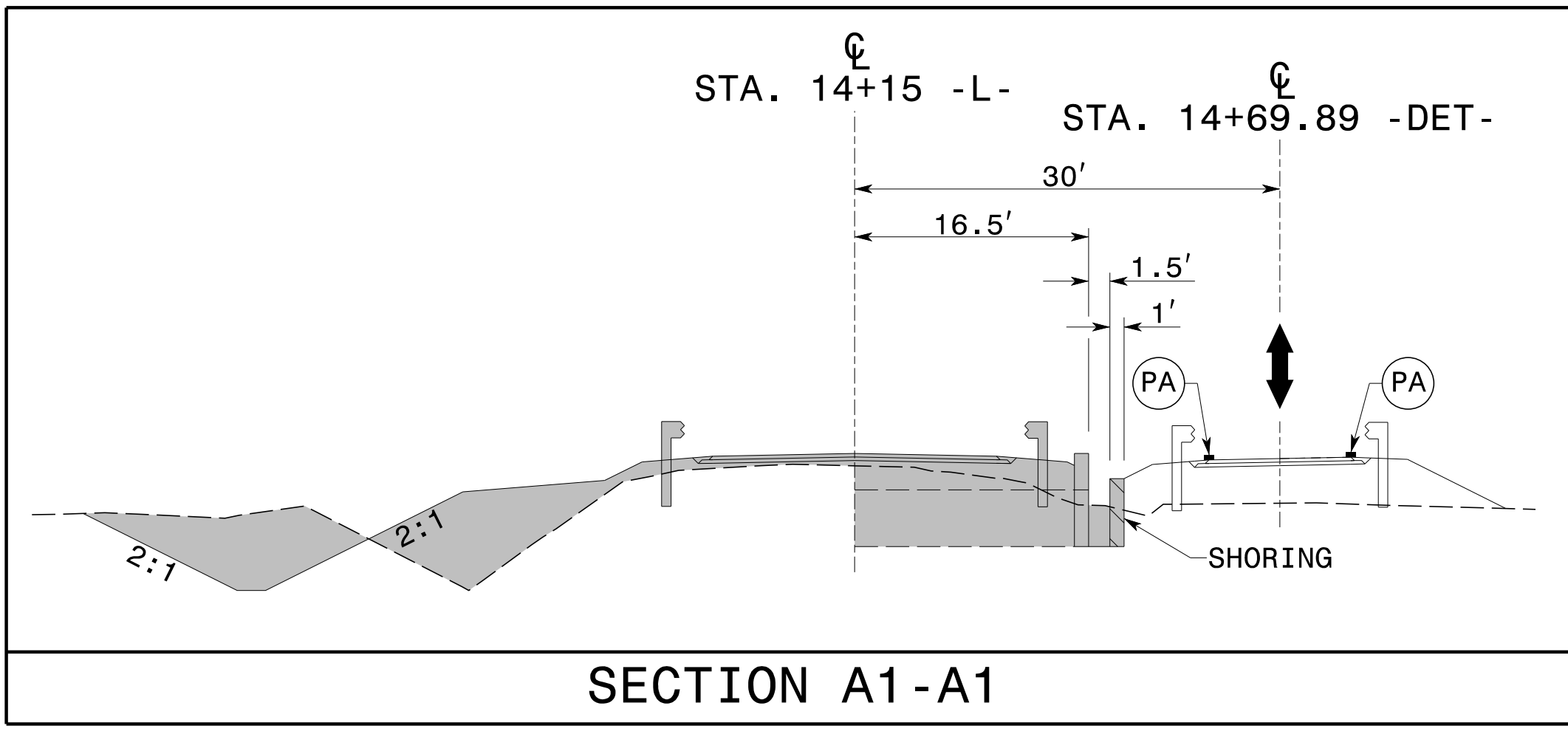
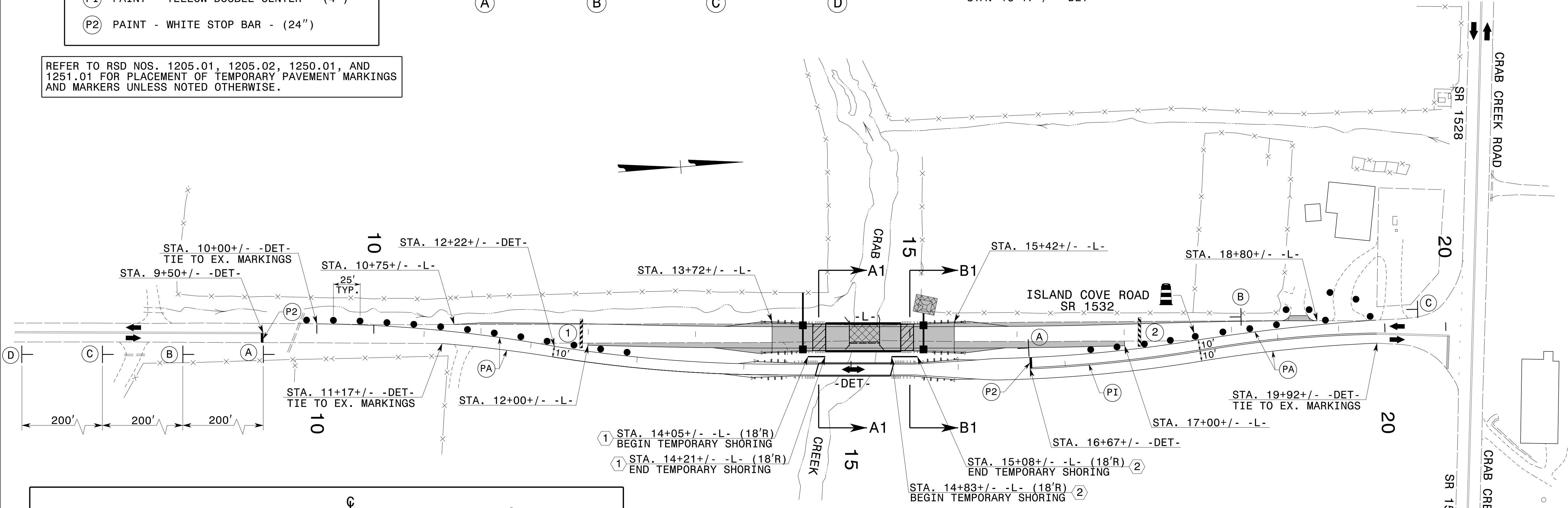


TEMPORARY PAVEMENT MARKING LEGEND	
(PA)	PAINT - WHITE EDGELINE - (4")
(PI)	PAINT - YELLOW DOUBLE CENTER - (4")
(P2)	PAINT - WHITE STOP BAR - (24")

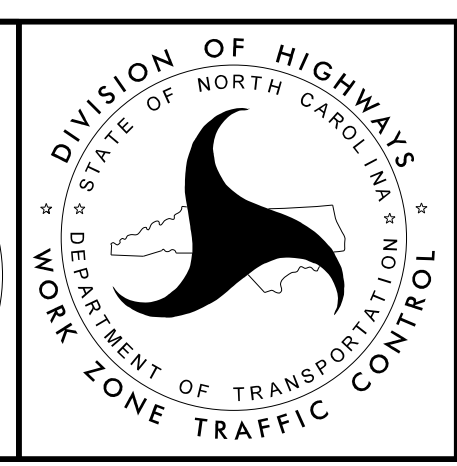
REFER TO RSD NOS. 1205.01, 1205.02, 1250.01, AND 1251.01 FOR PLACEMENT OF TEMPORARY PAVEMENT MARKINGS AND MARKERS UNLESS NOTED OTHERWISE.



Shoring I.D. No.	Estimated Average Height (ft.)	Quantity (sq. ft.)
①	3.6 FT.	58 SQ. FT.
②	4.8 FT.	120 SQ. FT.



APPROVED: *Lovi Stouchko*
 DATE: 9/21/2015
 NORTH CAROLINA PROFESSIONAL SEAL 034437
 LOVI D. STOUCHKO ENGINEER



PHASE II DETAILS

9/17/2015 p:\tip\projects\b5403\trafficcontrol\top\b5403_TC_TMP04.dgn User:scodts