

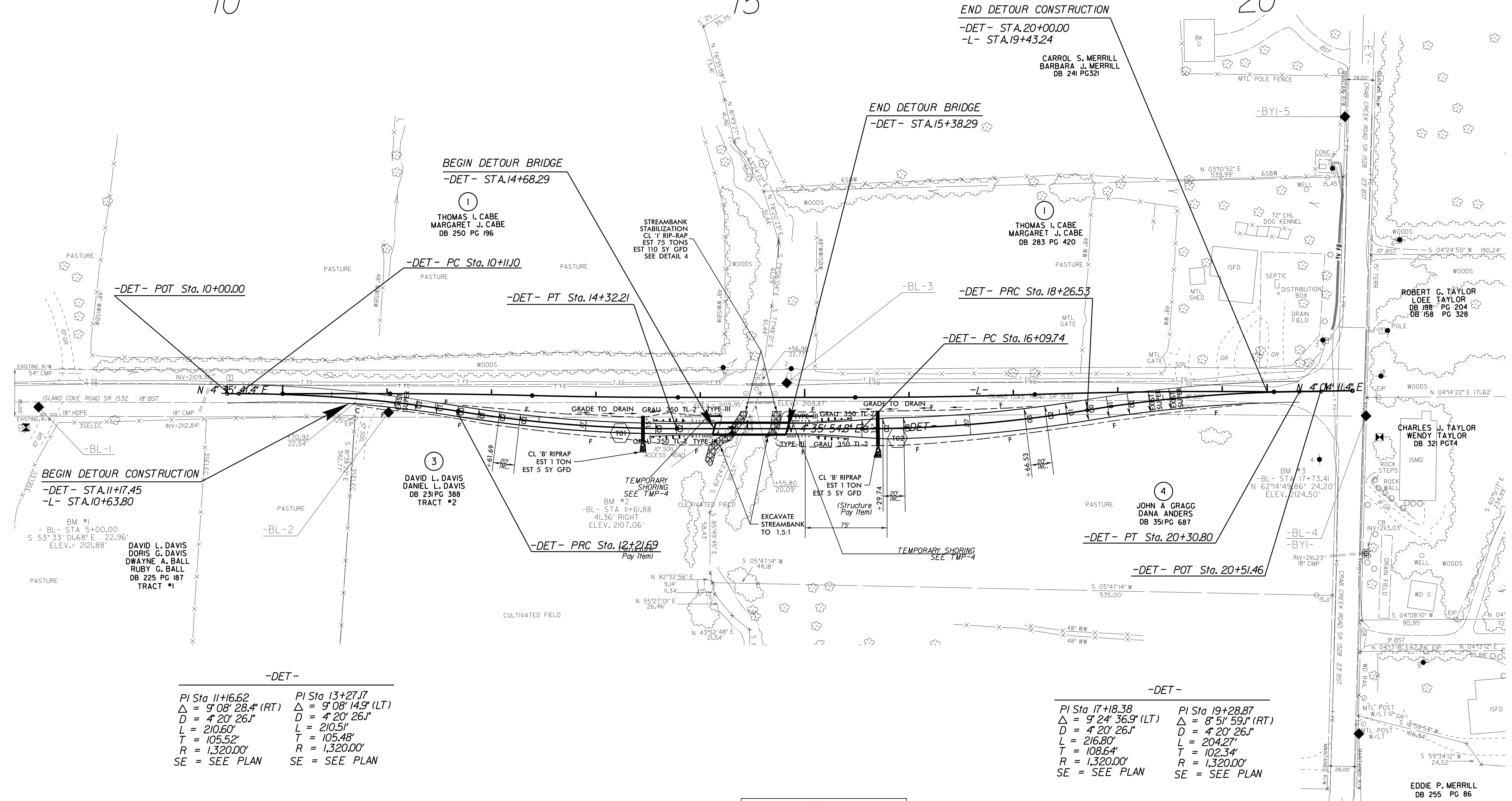
NAD 83/NSRS 2007

10

15

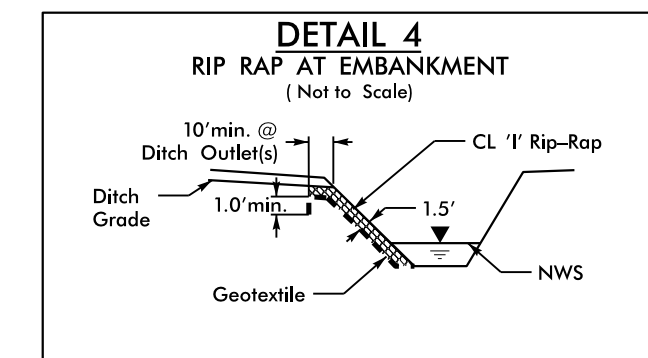
20

REVISIONS



-DET-	-DET-
PI Sta 11+16.62	PI Sta 13+27.17
$\Delta = 9' 08'' 28.4''$ (RT)	$\Delta = 9' 08'' 14.9''$ (LT)
D = 4' 20' 26.1"	D = 4' 20' 26.1"
L = 210.60'	L = 210.51'
T = 105.52'	T = 105.48'
R = 1,320.00'	R = 1,320.00'
SE = SEE PLAN	SE = SEE PLAN

-DET-	-DET-
PI Sta 17+18.38	PI Sta 19+28.87
$\Delta = 9' 24'' 36.9''$ (LT)	$\Delta = 8' 51'' 59.1''$ (RT)
D = 4' 20' 26.1"	D = 4' 20' 26.1"
L = 216.80'	L = 204.27'
T = 108.64'	T = 102.34'
R = 1,320.00'	R = 1,320.00'
SE = SEE PLAN	SE = SEE PLAN



FOR -DET- PROFILE SEE SHEET 5

8/17/99

 P:\NOV-2015\09153_B5403_Rdly-psh.de.txdgn
 3:44:58 PM 11/17/2015