

# SURVEY CONTROL SHEET B-5403

## -FINAL-

BL POINT	DESC.	NORTH	EAST	ELEVATION	L STATION	OFFSET
1	BL-1	559314.0885	919955.5957	2120.03	OUTSIDE PROJECT LIMITS	
2	BL-2	559647.7099	919987.5282	2110.92	11+01.37	17.87 RT
3	BL-3	560030.1926	919989.9865	2109.46	14+82.85	13.85 LT
4	BL-4	560580.7509	920065.9106	2116.73	OUTSIDE PROJECT LIMITS	

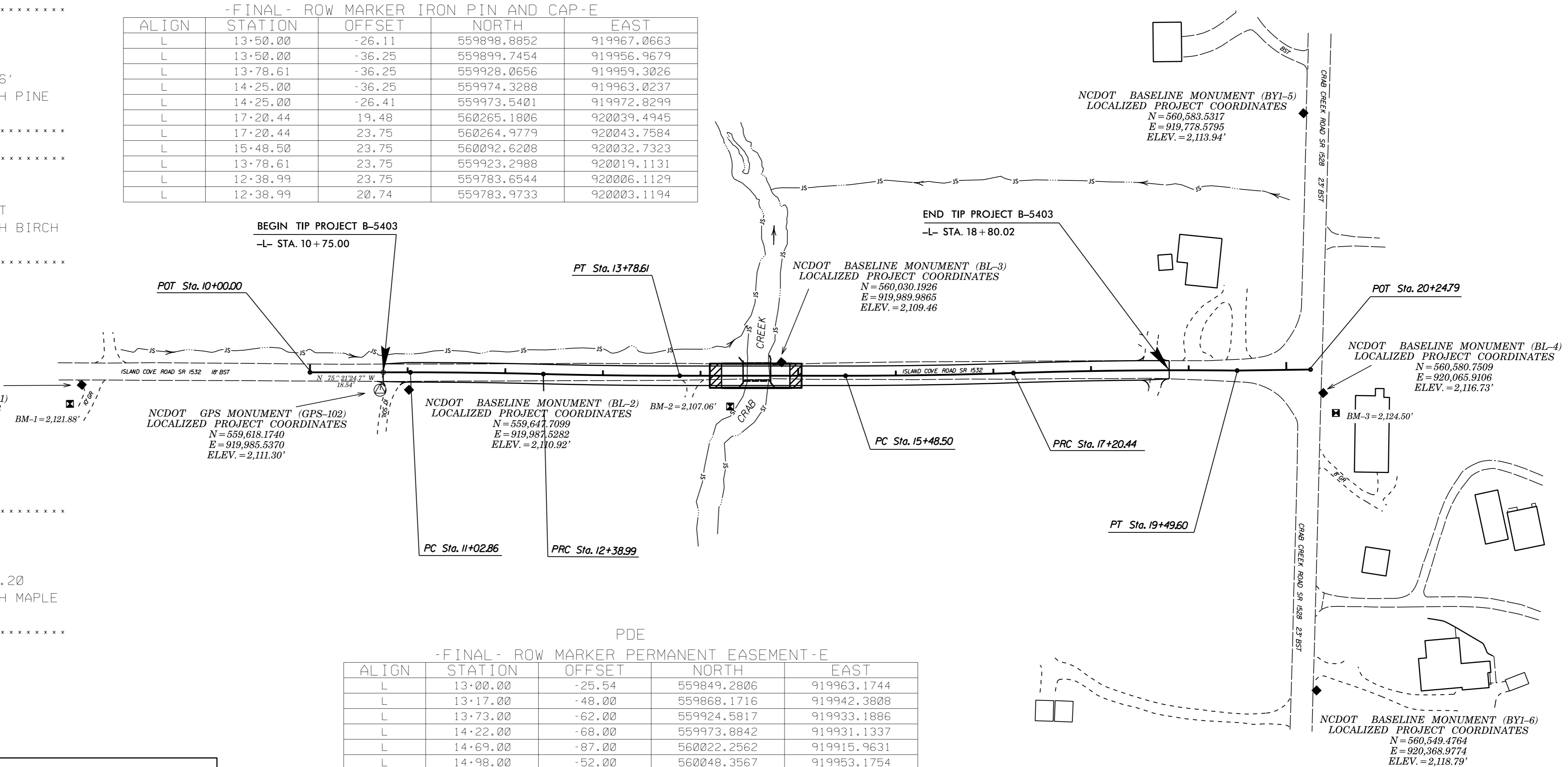
FINAL -L-			
TYPE	STATION	NORTH	EAST
POT	10+00.00	559548.1019	919961.5912
PC	11+02.86	559650.6314	919969.8312
PRC	12+38.99	559786.1703	919982.4946
PT	13+78.61	559925.1858	919995.4363
PC	15+48.50	560094.5228	920009.0567
PRC	17+20.44	560266.1059	920020.0333
PT	19+49.60	560494.6932	920035.9077
POT	20+24.79	560569.7239	920040.8803

\*\*\*\*\*  
 BM1 ELEVATION = 2121.88  
 N 559300 E 919974  
 BL STATION 5+00.00  
 S 53°33'01.68" W DIST 22.96'  
 8 INCH SPIKE IN BASE OF 18 INCH PINE TREE  
 \*\*\*\*\*

\*\*\*\*\*  
 BM2 ELEVATION = 2107.06  
 N 559974 E 920031  
 BL STATION 11+61.88 41.36 RIGHT  
 8 INCH SPIKE IN BASE OF 18 INCH BIRCH TREE  
 \*\*\*\*\*

\*\*\*\*\*  
 BM3 ELEVATION = 2124.50  
 N 560592 E 920087  
 BL STATION 17+73.41  
 N 62°14'49.86" E DIST 24.20  
 8 INCH SPIKE IN ROOT OF 30 INCH MAPLE TREE  
 \*\*\*\*\*

-FINAL- ROW MARKER IRON PIN AND CAP-E				
ALIGN	STATION	OFFSET	NORTH	EAST
L	13+50.00	-26.11	559898.8852	919967.0663
L	13+50.00	-36.25	559899.7454	919956.9679
L	13+78.61	-36.25	559928.0656	919959.3026
L	14+25.00	-36.25	559974.3288	919963.0237
L	14+25.00	-26.41	559973.5401	919972.8299
L	17+20.44	19.48	560265.1806	920039.4945
L	17+20.44	23.75	560264.9779	920043.7584
L	15+48.50	23.75	560092.6208	920032.7323
L	13+78.61	23.75	559923.2988	920019.1131
L	12+38.99	23.75	559783.6544	920006.1129
L	12+38.99	20.74	559783.9733	920003.1194



PDE -FINAL- ROW MARKER PERMANENT EASEMENT-E				
ALIGN	STATION	OFFSET	NORTH	EAST
L	13+00.00	-25.54	559849.2806	919963.1744
L	13+17.00	-48.00	559868.1716	919942.3808
L	13+73.00	-62.00	559924.5817	919933.1886
L	14+22.00	-68.00	559973.8842	919931.1337
L	14+69.00	-87.00	560022.2562	919915.9631
L	14+98.00	-52.00	560048.3567	919953.1754
L	15+37.00	-44.00	560086.5898	919964.2765
L	15+34.00	-26.96	560082.2333	919981.0203
L	19+19.00	22.41	560462.3069	920055.5412
L	18+25.00	41.00	560367.7299	920066.9456
L	17+39.00	40.00	560282.6032	920060.8954
L	15+75.00	49.00	560117.2631	920059.9763
L	14+57.00	51.00	559999.2307	920052.5567
L	14+17.00	91.00	559956.1525	920089.2210
L	13+94.00	62.00	559935.5516	920058.4703
L	13+49.00	47.00	559891.6742	920039.8300
L	10+99.00	32.00	559644.2202	920001.4191
L	10+69.00	22.49	559615.0784	919989.5370

### DATUM DESCRIPTION

THE LOCALIZED COORDINATE SYSTEM DEVELOPED FOR THIS PROJECT IS BASED ON THE STATE PLANE COORDINATES ESTABLISHED BY NCDOT FOR MONUMENT "B5403 (GPS-102)" WITH NAD 83/NSRS 2007 STATE PLANE GRID COORDINATES OF NORTHING: 559618.1740(±) EASTING: 919985.5370(±) ELEVATION: 2111.30(±)

THE AVERAGE COMBINED GRID FACTOR USED ON THIS PROJECT (GROUND TO GRID) IS: 0.999776345

THE N.C. LAMBERT GRID BEARING AND LOCALIZED HORIZONTAL GROUND DISTANCE FROM "B5403 (GPS-102)" TO -L- STATION 10+75.00 IS  
 N 75°21'24.7" W 18.54'

ALL LINEAR DIMENSIONS ARE LOCALIZED HORIZONTAL DISTANCES  
 VERTICAL DATUM USED IS NAVD 88

#### NOTES:

1. THE CONTROL DATA FOR THIS PROJECT CAN BE FOUND ELECTRONICALLY BY SELECTING PROJECT CONTROL DATA AT:  
[HTTPS://CONNECT.NCDOT.GOV/RESOURCES/LOCATION/](https://connect.ncdot.gov/resources/location/)

THE FILES TO BE FOUND ARE AS FOLLOWS:  
 B-5403\_LS\_CONTROL.TXT

SITE CALIBRATION INFORMATION HAS NOT BEEN PROVIDED FOR THIS PROJECT. IF FURTHER INFORMATION IS NEEDED, PLEASE CONTACT THE LOCATION AND SURVEYS UNIT.

- ⊕ INDICATES GEODETIC CONTROL MONUMENTS USED OR SET FOR HORIZONTAL PROJECT CONTROL BY THE NCDOT LOCATION AND SURVEYS UNIT.  
 PROJECT CONTROL ESTABLISHED USING GLOBAL POSITIONING SYSTEM.

**GEOID MODEL: G09NC**  
 NOTE: DRAWING NOT TO SCALE