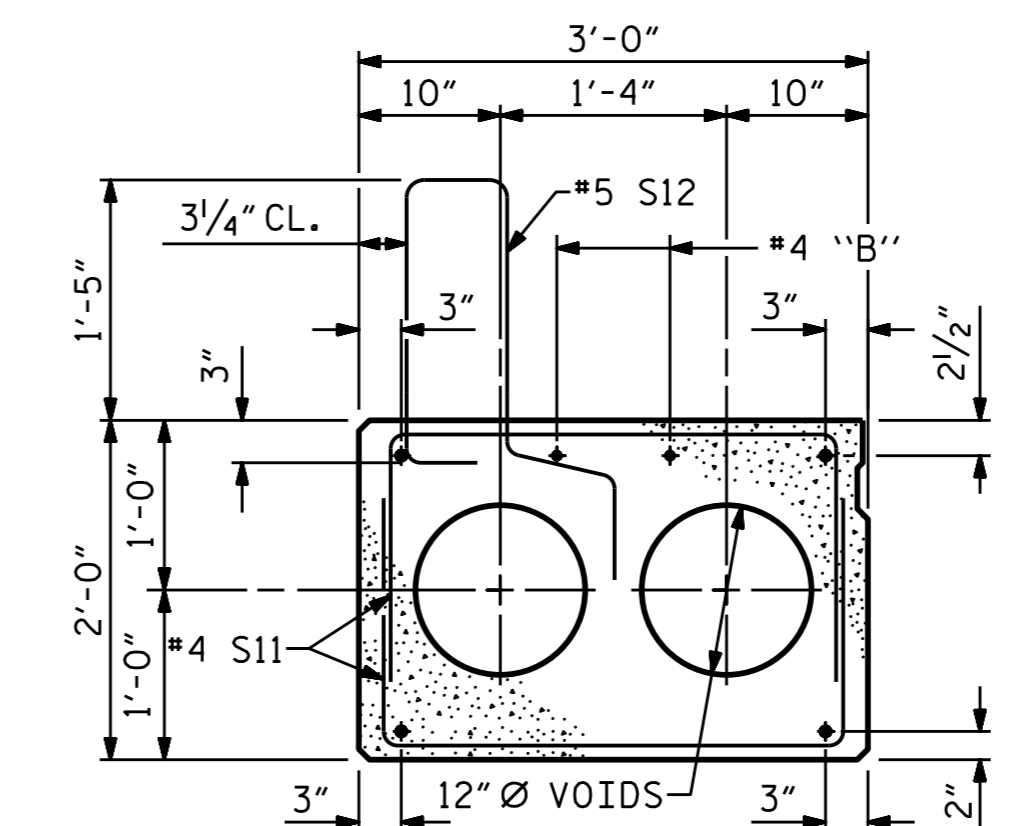


HALF SECTION
AT INTERMEDIATE DIAPHRAGMS

TYPICAL SECTION

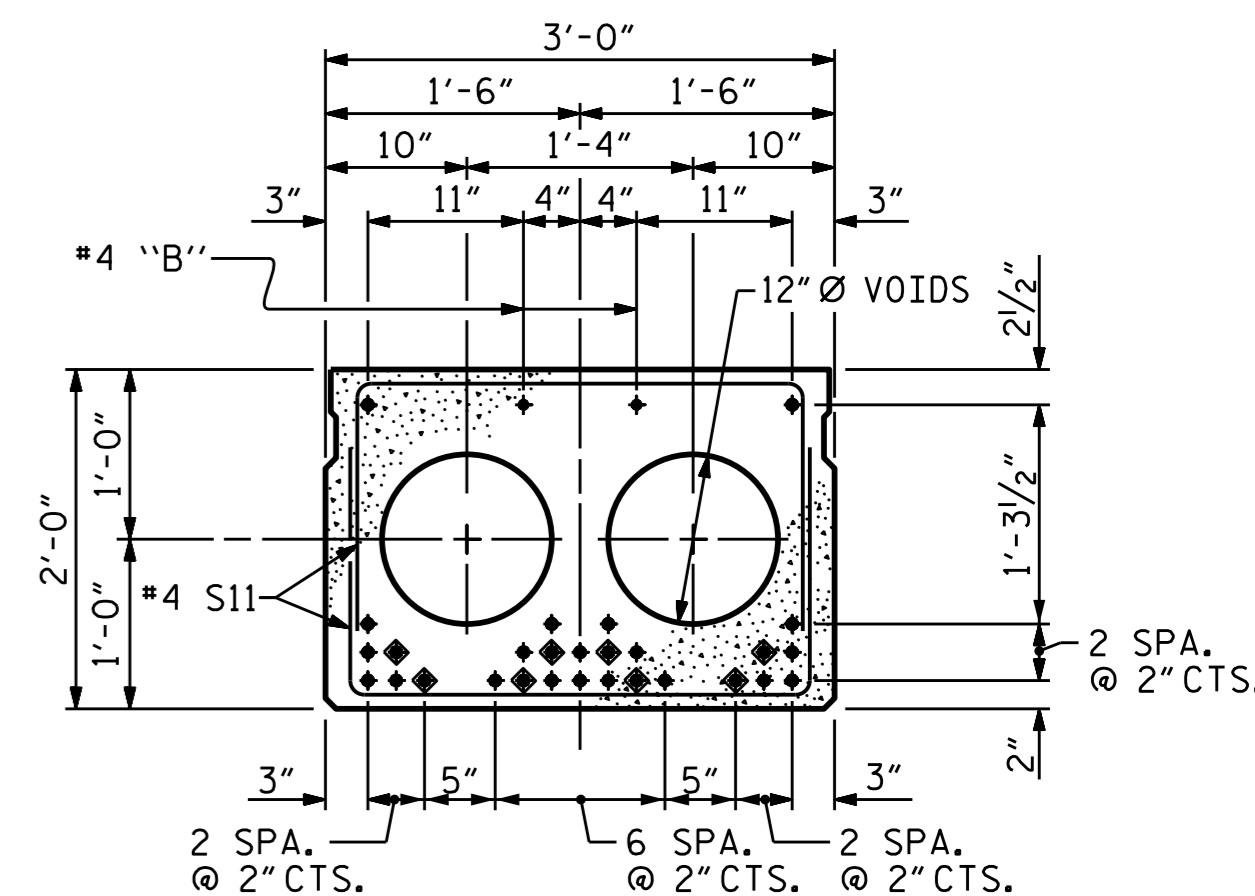
HALF SECTION
THROUGH VOIDS

* - THE MAXIMUM PARAPET HEIGHT AND ASPHALT THICKNESS IS SHOWN. THE HEIGHT OF THE PARAPET AND ASPHALT THICKNESS VARIES WHILE THE TOP OF THE PARAPET FOLLOWS THE PROFILE OF THE GUTTERLINE. FOR RAIL HEIGHT DETAILS AND ASPHALT THICKNESS, SEE THE "TWO BAR METAL RAIL SECTION" DETAIL.



EXTERIOR SLAB SECTION

(FOR PRESTRESSED STRAND LAYOUT, SEE INTERIOR SLAB SECTION.)



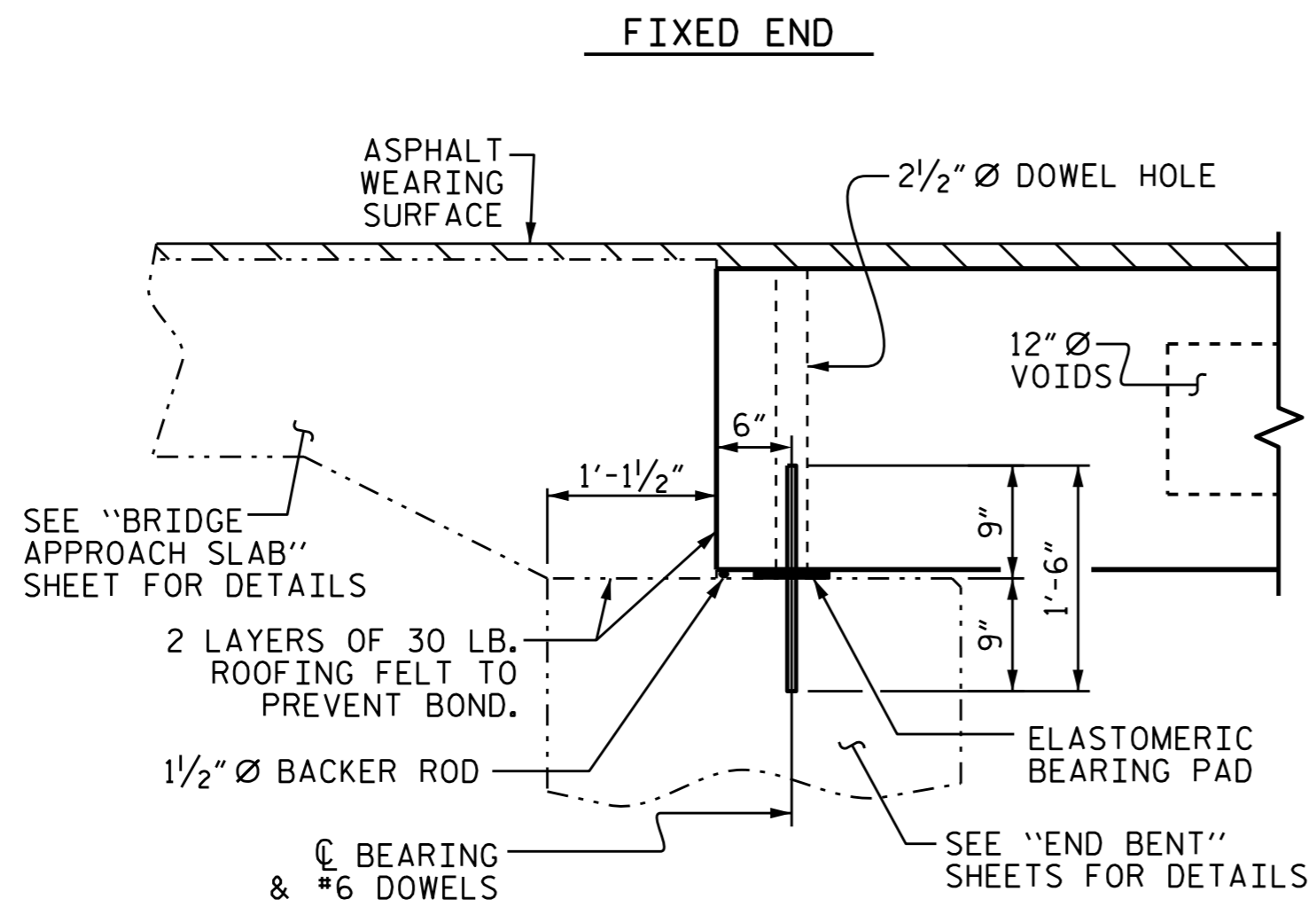
INTERIOR SLAB SECTION (70' UNIT)

(28 STRANDS REQUIRED)

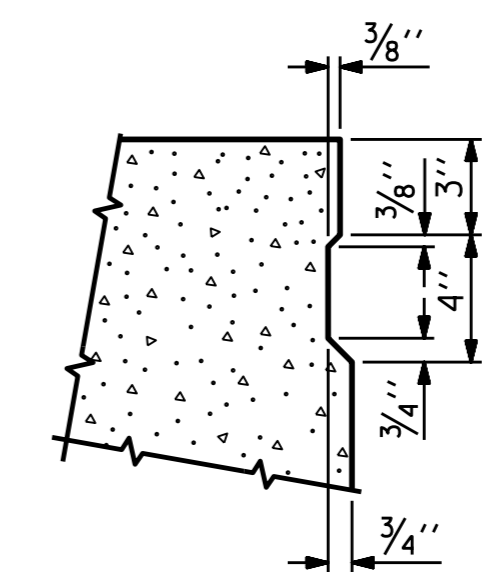
0.6" Ø LOW RELAXATION STRAND LAYOUT

◆ BOND SHALL BE BROKEN ON THESE STRANDS FOR A DISTANCE OF 12'-0" FROM END OF CORED SLAB UNIT. SEE STANDARD SPECIFICATIONS, ARTICLE 1078-7.

DEBONDING LEGEND



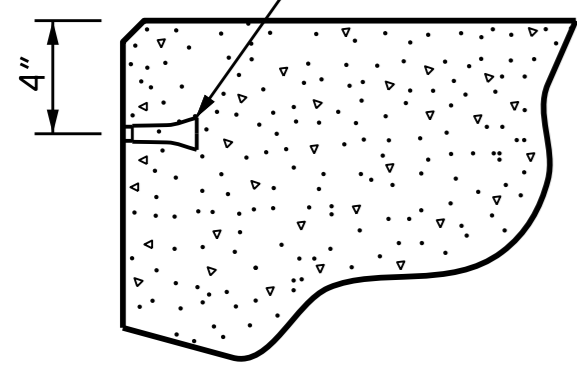
SECTION AT END BENT



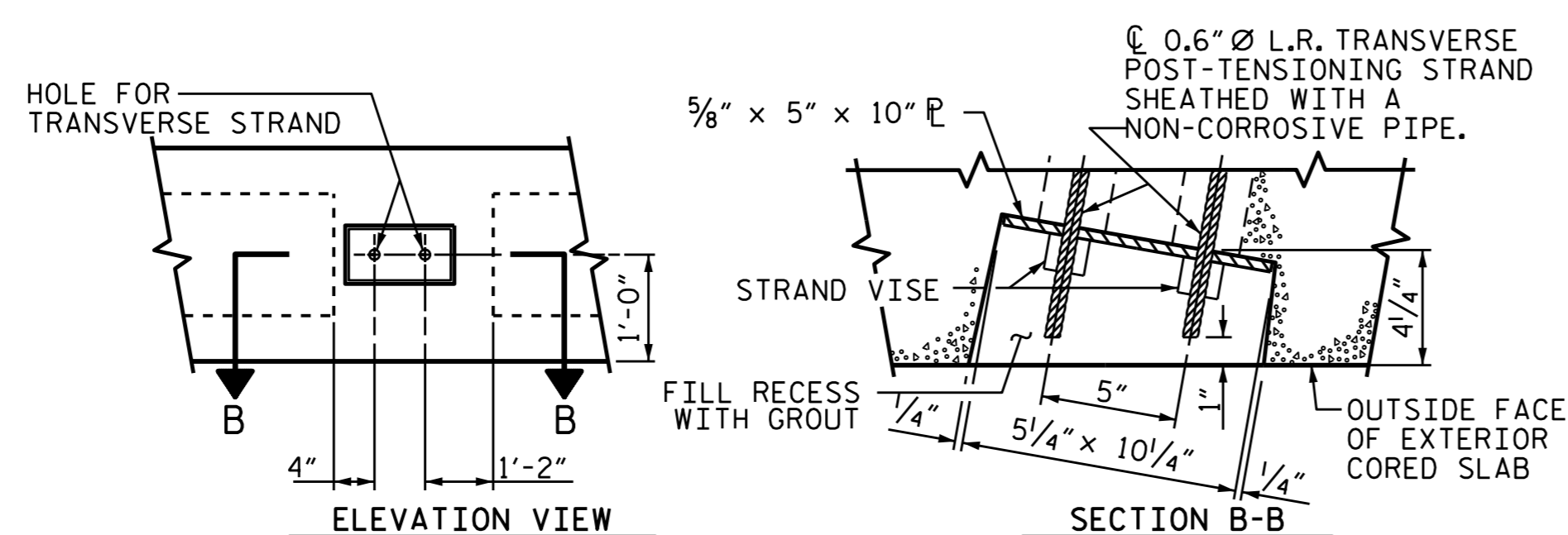
SHEAR KEY DETAIL

NOTE: OMIT SHEAR KEY ON OUTSIDE FACE OF EXTERIOR CORED SLABS.

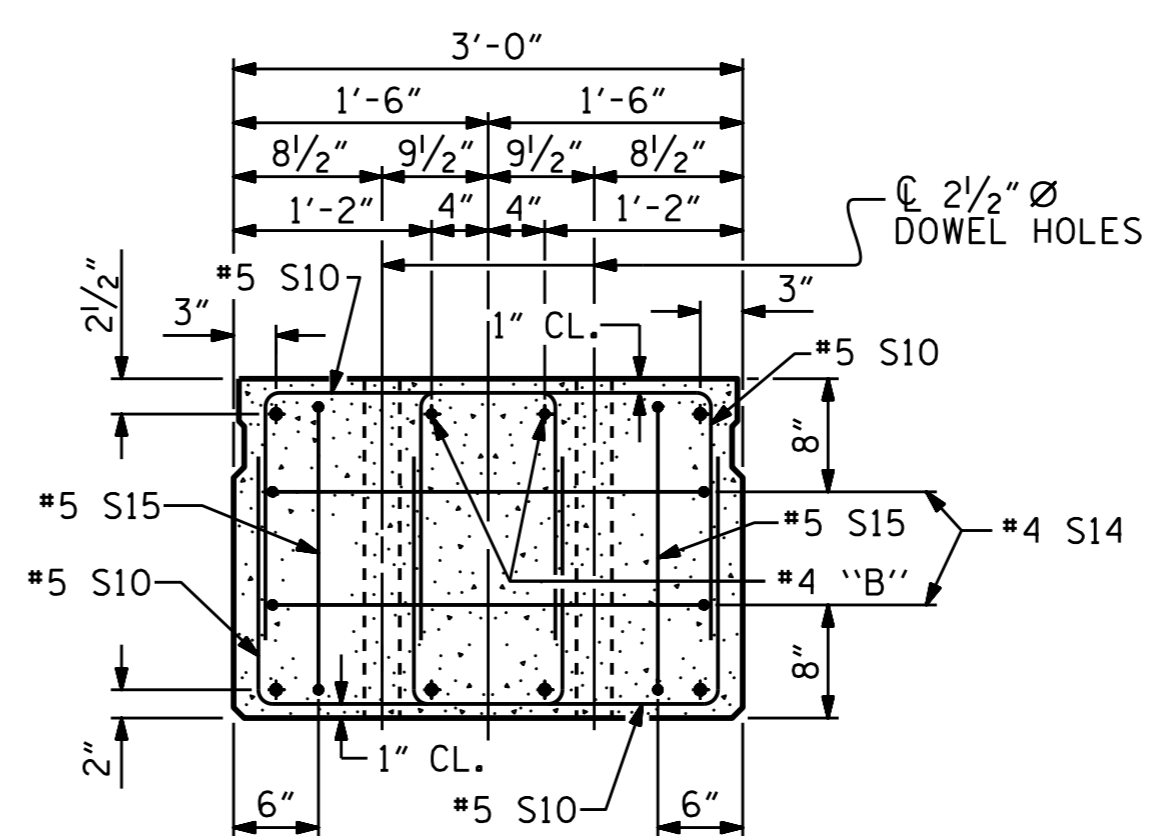
PERMITTED THREADED INSERT CAST IN OUTSIDE FACE OF EXTERIOR UNIT AND RECESSED 3/8". SIZE TO BE DETERMINED BY CONTRACTOR.



THREADED INSERT DETAIL



GROUTED RECESS AT END OF POST-TENSIONED STRAND-CORED SLABS



END ELEVATION

SHOWING PLACEMENT OF DOUBLE STIRRUPS AND LOCATION OF DOWEL HOLES. (STRAND LAYOUT NOT SHOWN.) INTERIOR SLAB UNIT SHOWN-EXTERIOR SLAB UNIT SIMILAR EXCEPT SHEAR KEY LOCATION.



PROJECT NO. B-4822
TRANSYLVANIA COUNTY
STATION: 15+10.00 -L-

SHEET 1 OF 3

STATE OF NORTH CAROLINA
DEPARTMENT OF TRANSPORTATION
RALEIGH

3'-0" X 2'-0"
PRESTRESSED CONCRETE
CORED SLAB UNIT

REVISIONS						SHEET NO. S-5
NO.	BY:	DATE:	NO.	BY:	DATE:	
1			3			TOTAL SHEETS 18
2			4			

DRAWN BY: H. T. BARBOUR DATE: 3-27-15
CHECKED BY: V. X. NGUYEN DATE: 4-15
DESIGN ENGINEER OF RECORD: A. M. LEE DATE: 5-20-15

17-NOV-2015 15:01

17-NOV-2015 15:01
X:\Structures\Final Plans\B4822.SD.TS.dgn
waraft