

# SURVEY CONTROL SHEET B-4822 -PRELIMINARY-

BL	POINT	DESC.	NORTH	EAST	ELEVATION	L STATION	OFFSET
	1	BL-1	555060.5517	886538.6456	2110.60	10+24.82	16.33 LT
	2	BL-2	554562.8452	886634.8425	2112.54	15+55.47	41.34 LT
	3	BL-3	554252.2744	886833.0567	2117.57	19+35.07	15.63 RT

ALIGN	STATION	OFFSET	NORTH	EAST
L	10+75.00	30.00	555012.7265	886489.8848
L	12+25.00	55.00	554863.8231	886457.4795
L	14+49.35	55.00	554620.5941	886503.6688
L	15+89.47	55.00	554492.6002	886560.6676
L	17+75.00	55.00	554323.8694	886675.4490
L	19+20.00	29.38	554248.8779	886812.9447

BM1 ELEVATION = 2113.19  
N 554773 E 886506  
L STATION 13+12.00 10 RIGHT  
8" SPIKE SET IN BASE OF 15" OAK TREE

BM2 ELEVATION = 2127.01  
N 554251 E 886793  
L STATION 19+02.00 38 RIGHT  
8" SPIKE SET IN BASE OF 10" BIRCH TREE

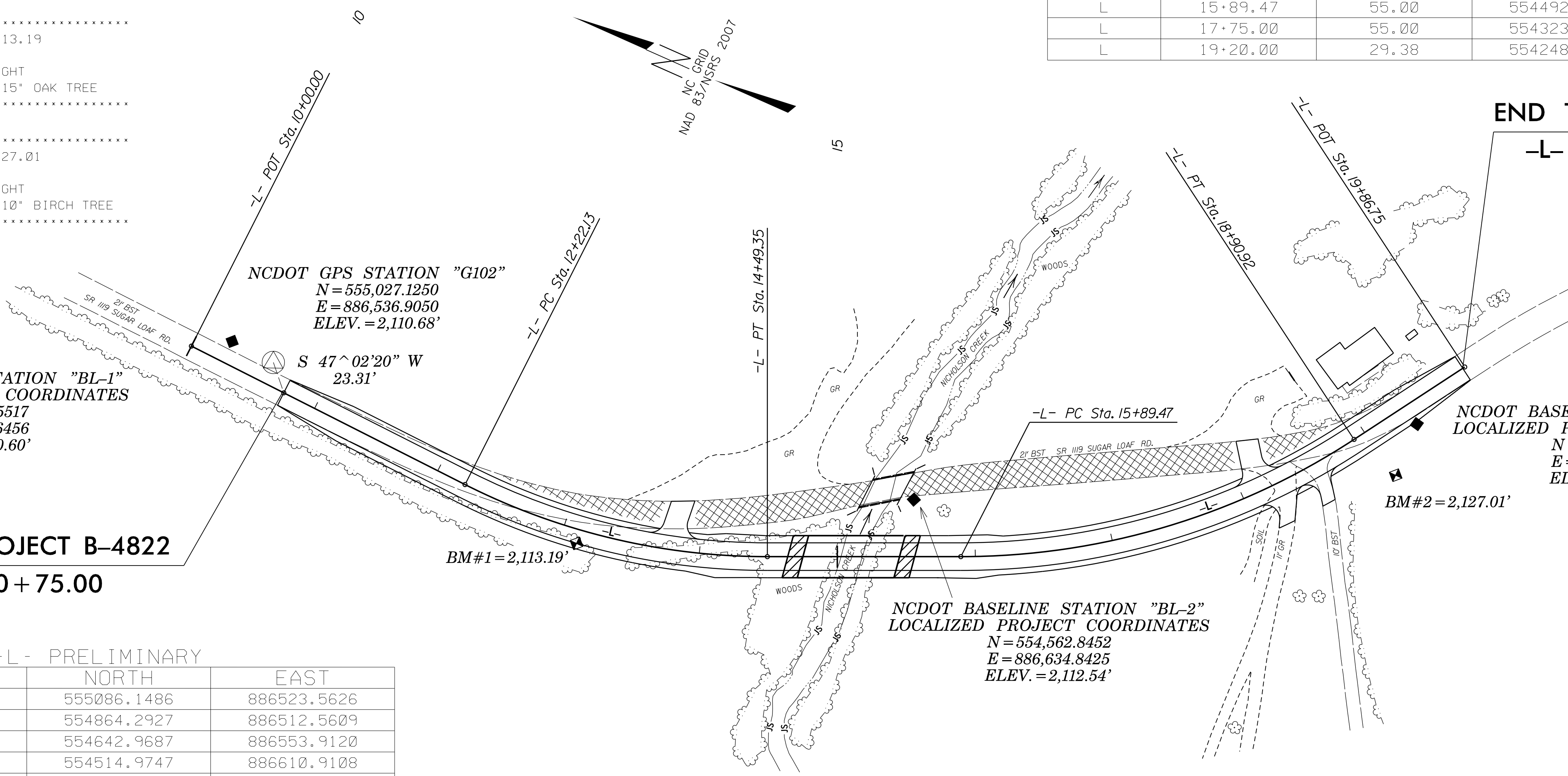
NCDOT GPS STATION "G102"  
N = 555,027.1250  
E = 886,536.9050  
ELEV. = 2,110.68'  
S 47°02'20" W 23.31'

NCDOT BASELINE STATION "BL-1"  
LOCALIZED PROJECT COORDINATES  
N = 555,060.5517  
E = 886,538.6456  
ELEV. = 2,110.60'

BEGIN TIP PROJECT B-4822  
-L- POT STA. 10+75.00

END TIP PROJECT B-4822  
-L- POT STA. 19+85.00

TYPE	STATION	NORTH	EAST
POT	10+00.00	555086.1486	886523.5626
PC	12+22.13	554864.2927	886512.5609
PT	14+49.35	554642.9687	886553.9120
PC	15+89.47	554514.9747	886610.9108
PT	18+90.92	554289.3222	886804.4029
POT	19+86.75	554237.4414	886884.9684



### DATUM DESCRIPTION

THE LOCALIZED COORDINATE SYSTEM DEVELOPED FOR THIS PROJECT IS BASED ON THE STATE PLANE COORDINATES ESTABLISHED BY NCGS FOR MONUMENT "G102"

WITH NAD 83/NSRS 2007 STATE PLANE GRID COORDINATES OF  
NORTHING: 555027.125(ft) EASTING: 886536.905(ft)  
ELEVATION: 2110.68(ft)

THE AVERAGE COMBINED GRID FACTOR USED ON THIS PROJECT (GROUND TO GRID) IS: 0.99977651

THE N.C. LAMBERT GRID BEARING AND LOCALIZED HORIZONTAL GROUND DISTANCE FROM "G102" TO -L- STATION 10+75.00 IS  
S 47°02'20" W 23.31'

ALL LINEAR DIMENSIONS ARE LOCALIZED HORIZONTAL DISTANCES  
VERTICAL DATUM USED IS NAVD 88

- NOTES:**
- THE CONTROL DATA FOR THIS PROJECT CAN BE FOUND ELECTRONICALLY BY SELECTING PROJECT CONTROL DATA AT:  
[HTTPS://CONNECT.NCDOT.GOV/RESOURCES/LOCATION/](https://connect.ncdot.gov/resources/location/)  
THE FILES TO BE FOUND ARE AS FOLLOWS:  
B-4822\_LS\_CONTROL.TXT
- SITE CALIBRATION INFORMATION HAS NOT BEEN PROVIDED FOR THIS PROJECT. IF FURTHER INFORMATION IS NEEDED, PLEASE CONTACT THE LOCATION AND SURVEYS UNIT.
- ⊙ INDICATES GEODETIC CONTROL MONUMENTS USED OR SET FOR HORIZONTAL PROJECT CONTROL BY THE NCDOT LOCATION AND SURVEYS UNIT.  
PROJECT CONTROL ESTABLISHED USING GLOBAL POSITIONING SYSTEM.

GEOID MODEL—GEOID 03  
NOTE: DRAWING NOT TO SCALE