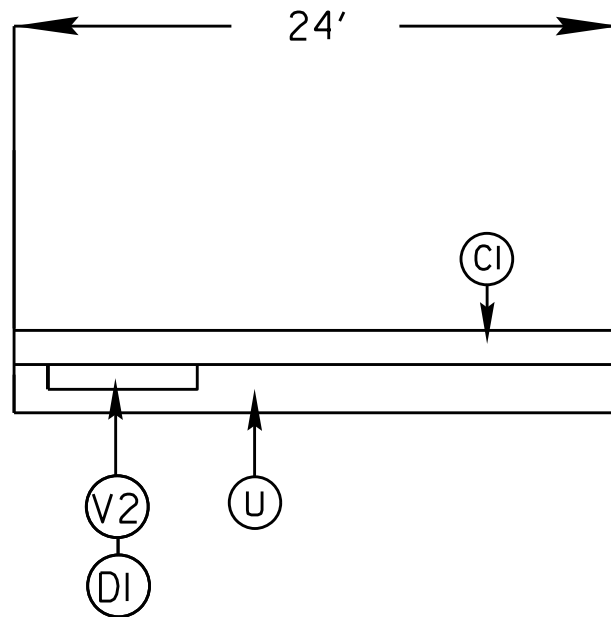
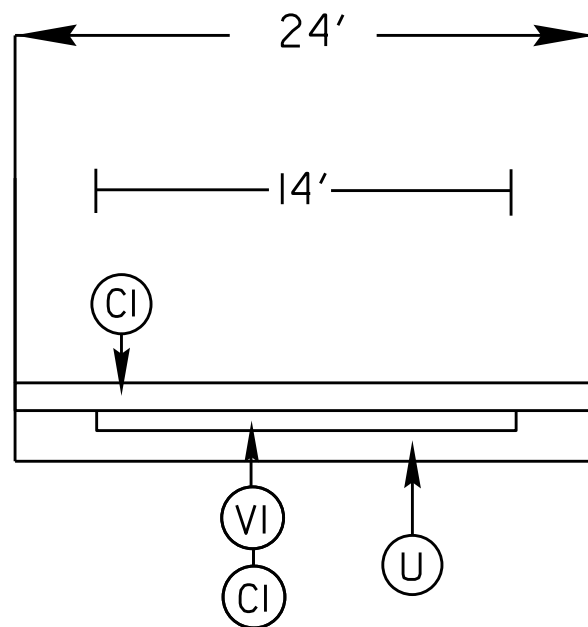


PROJECT REFERENCE NO.		SHEET NO.
14CPT.14.02.10871.1		5
STATE PROJECT	F.A. PROJECT NO.	DESCRIPTION
14CPT.14.02.10871.1		

### TYPICAL 3



### TYPICAL 4



### SURFACING SCHEDULE

ITEM NO	DESCRIPTION
C1	PROP. APPROX. 1 1/2" ASPHALT CONCRETE SURFACE COURSE, TYPE S9.5B, AT AN AVERAGE RATE OF 168 LBS. PER SQ. YD
D1	PROP. APPROX. 3" ASPHALT CONCRETE INTERMEDIATE COURSE, TYPE I19.0B, AT A AVERAGE RATE OF 342 LBS PER SQ. YD.
R	MILLED RUMBLE STRIPS
U	EXISTING ASPHALT
V1	MILLED ASPHALT PAVEMENT 1 1/2 " IN DEPTH AT LOCATIONS AS DIRECTED BY PROJECT ENGINEER
V2	MILLED ASPHALT PAVEMENT 3" IN DEPTH AT LOCATIONS AS DIRECTED BY PROJECT ENGINEER

**\* SPECIAL PROJECT NOTE \***

THE TAPER ENTRANCES TO WEST ALARKA SCHOOL WILL BE OVERLAID TO R/W  
 THE TAPER AT FONTANA LAKE ESTATE SUB-DIVISION WILL BE OVERLAID TO EXTRA WIDTH OF 10'

THE MILLING ON TYPICAL 1 AND 2, INSIDE LANE, IS AT LOCATION OF DISTRESS AND AND IS VARIABLE LENGTH AND WIDTH:  
 TYPICAL 3 IS MILLING AT LOCATIONS OF DISTRESS, VARIABLE WIDTH AND LENGTH: