

**This electronic collection of documents is provided  
for the convenience of the user  
and is Not a Certified Document –**

**The documents contained herein were originally issued  
and sealed by the individuals whose names and license  
numbers appear on each page, on the dates appearing  
with their signature on that page.**

**This file or an individual page  
shall not be considered a certified document.**

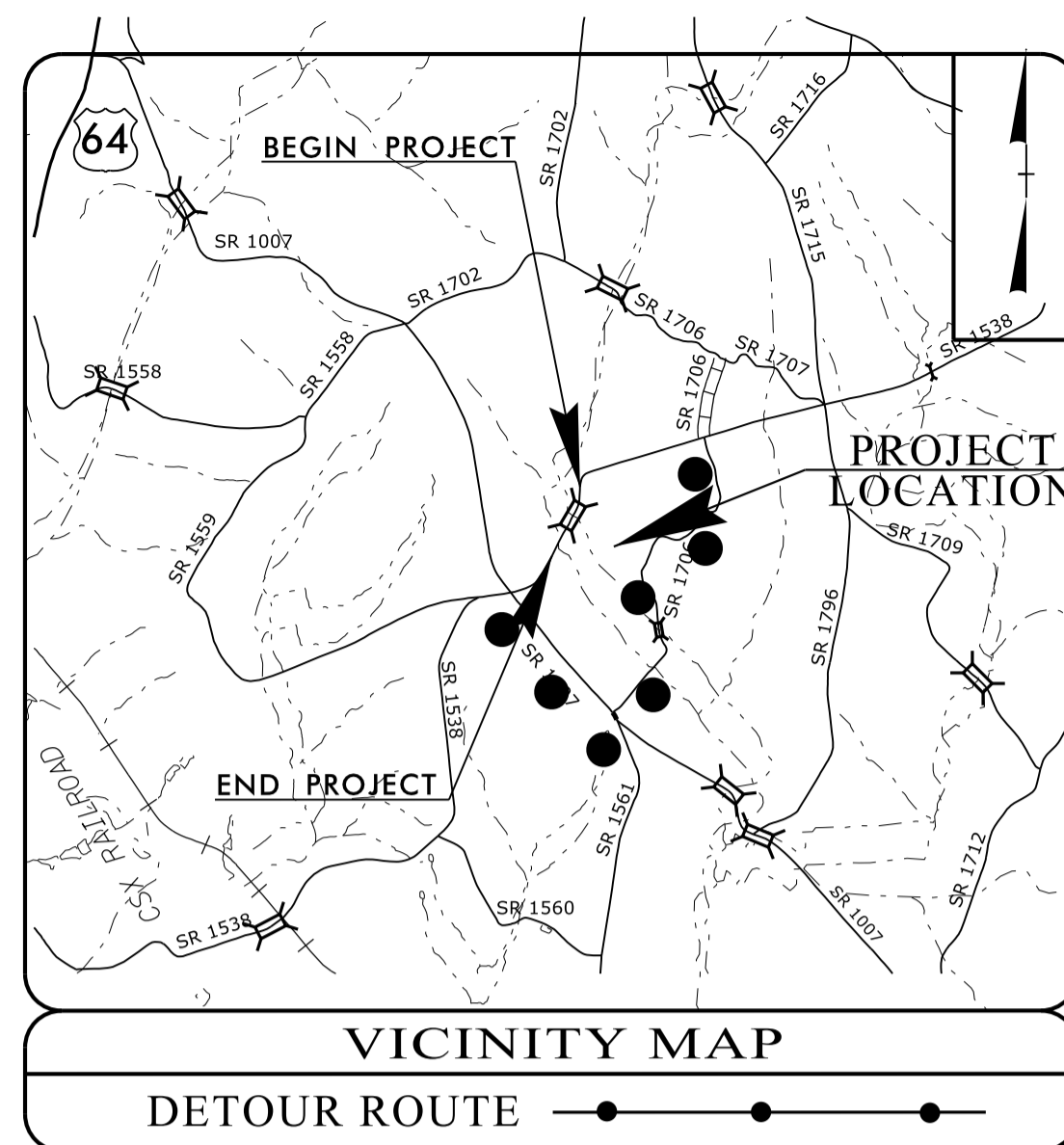
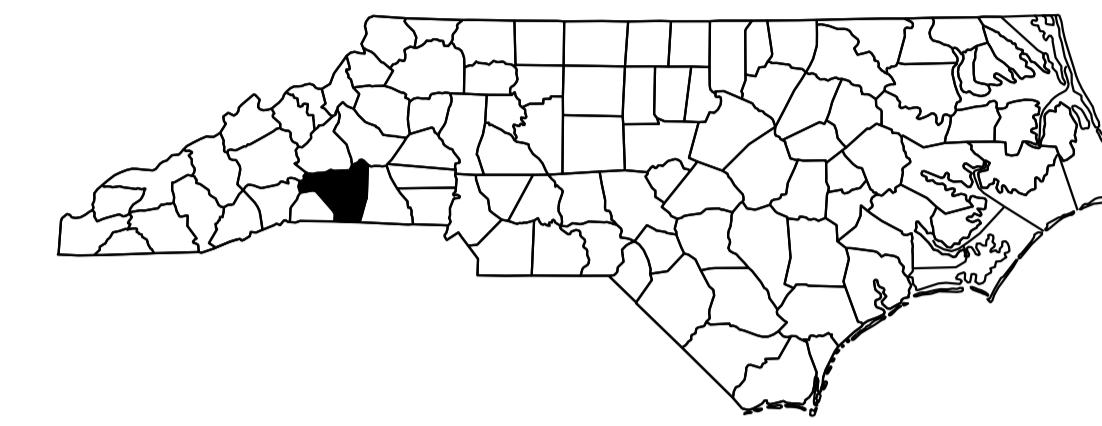
T.I.P. NO.	SHEET NO.
B-5395	UO-1

STATE OF NORTH CAROLINA  
DIVISION OF HIGHWAYS

**UTILITIES BY OTHERS PLANS  
RUTHERFORD COUNTY**

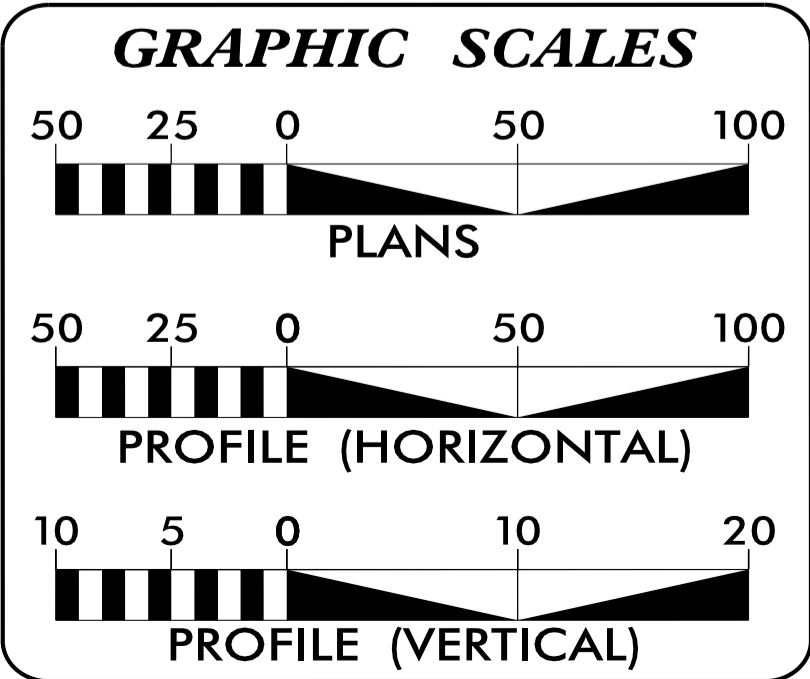
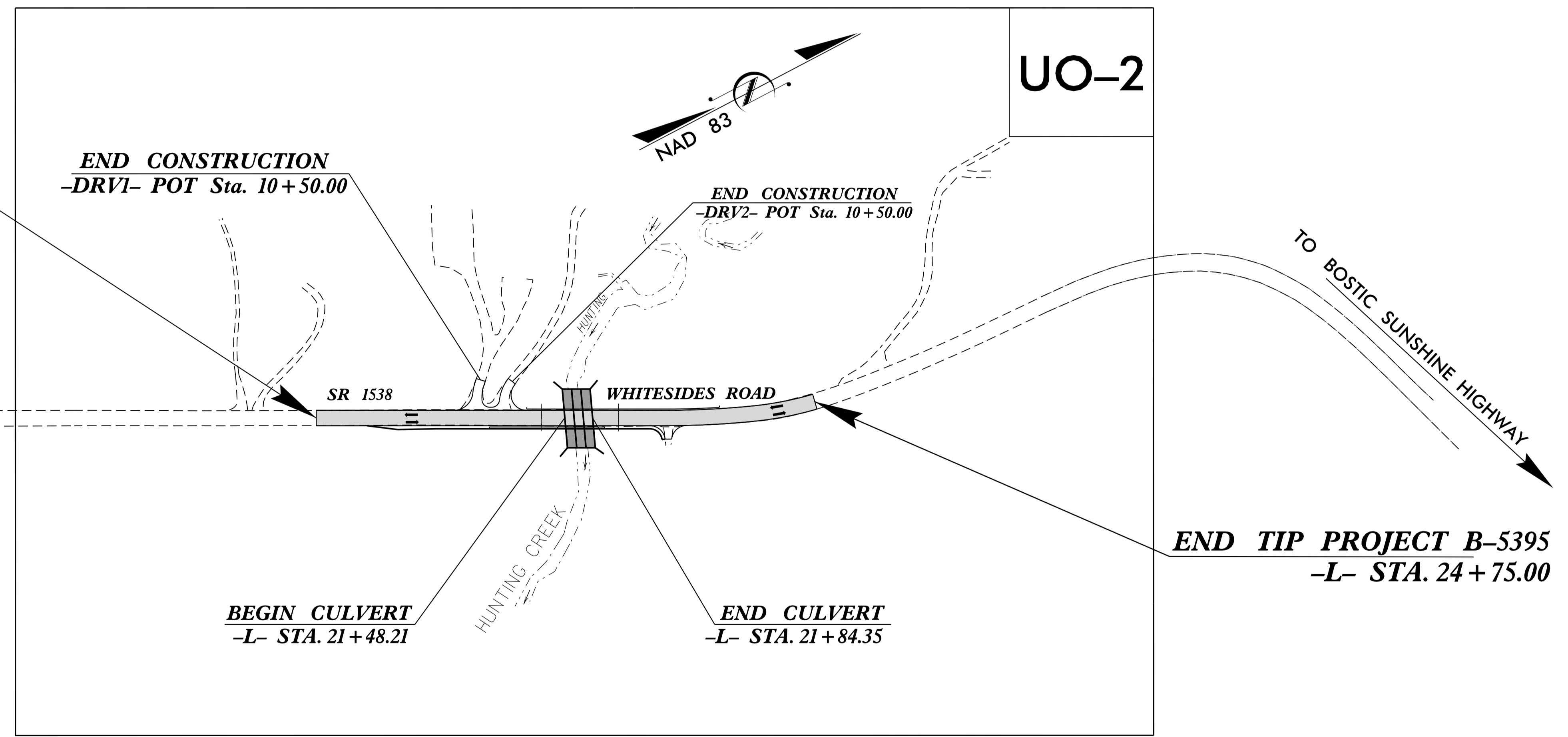
**LOCATION: REPLACEMENT OF BRIDGE No. 577 OVER HUNTING CREEK ON SR 1538 (WHITESIDES ROAD)**

**TYPE OF WORK: OVERHEAD POWER AND UNDERGROUND TELEPHONE RELOCATION**



**TIP PROJECT: B-5395**

**BEGIN TIP PROJECT B-5395  
-L- STA. 18 + 25.00**



**INDEX OF SHEETS**

SHEET NO.	DESCRIPTION
UO-1	TITLE SHEET
UO-2	UTILITIES BY OTHERS PLAN SHEET

**UTILITY OWNERS ON PROJECT**

(A) DUKE ENERGY - DISTRIBUTION POWER  
(B) AT&T - TELEPHONE

PREPARED IN THE OFFICE OF:  
**DIVISION OF HIGHWAYS  
UTILITIES UNIT  
UTILITIES ENGINEERING**

1555 MAIL SERVICES CENTER  
RALEIGH, NC 27699-1555  
PHONE (919) 707-6690  
FAX (919) 250-4151

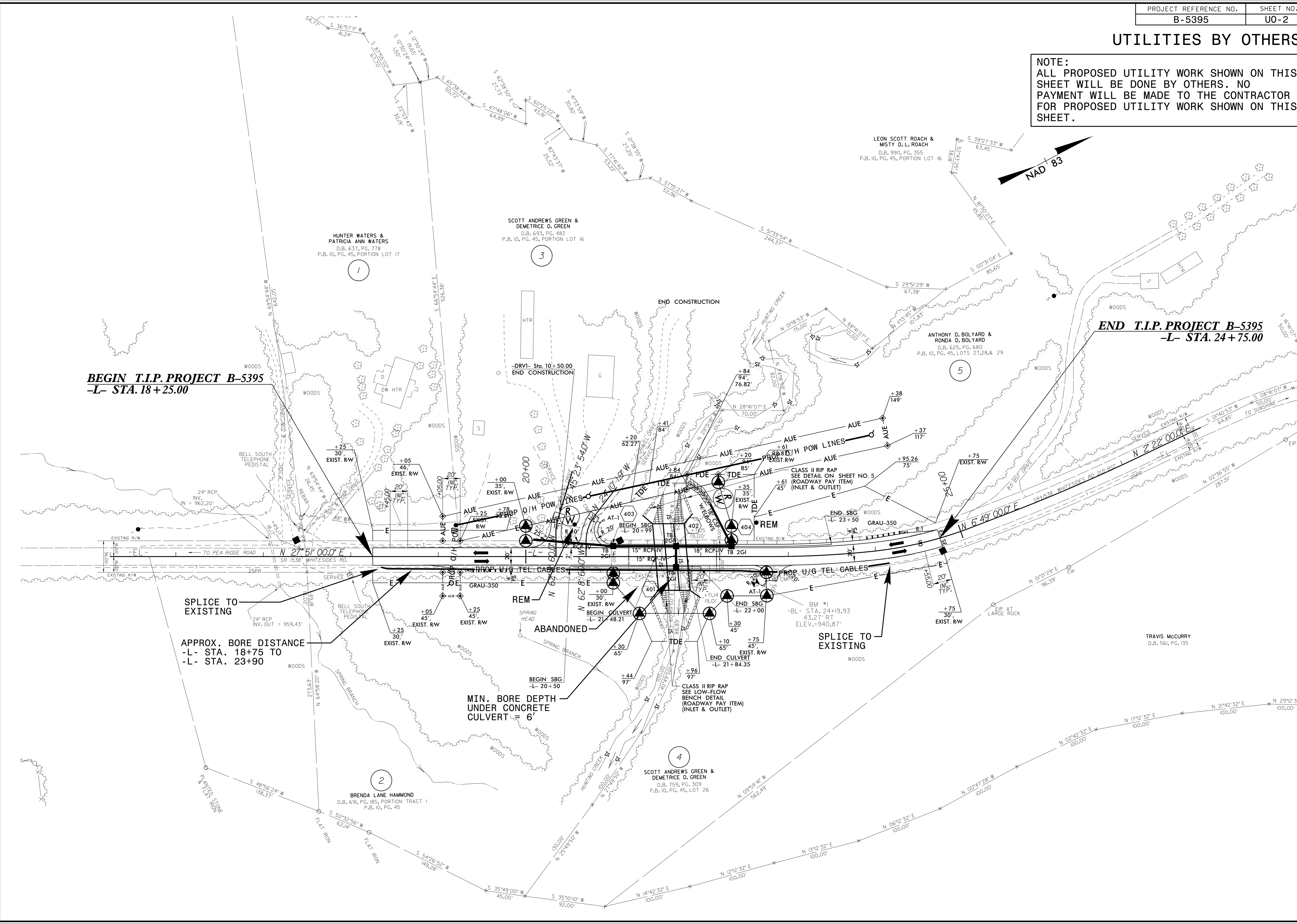
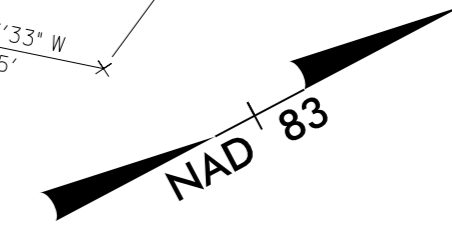
**Roger Worthington, P.E.** UTILITIES SECTION ENGINEER  
**Carl Barclay, P.E.** UTILITIES SQUAD LEADER PROJECT ENGINEER  
**James E. Swinson** UTILITIES PROJECT DESIGNER

09/08/99

R:\Utilities\Engineering\UB0\Proj\B-5395\_Ut\_tsh\_U01\_psh.dgn  
\$\$\$\$\$USERNAME\$\$\$\$\$

# UTILITIES BY OTHERS

**NOTE:**  
 ALL PROPOSED UTILITY WORK SHOWN ON THIS SHEET WILL BE DONE BY OTHERS. NO PAYMENT WILL BE MADE TO THE CONTRACTOR FOR PROPOSED UTILITY WORK SHOWN ON THIS SHEET.



**BEGIN T.I.P. PROJECT B-5395**  
 -L- STA. 18+25.00

**END T.I.P. PROJECT B-5395**  
 -L- STA. 24+75.00

SPLICE TO EXISTING

APPROX. BORE DISTANCE  
 -L- STA. 18+75 TO  
 -L- STA. 23+90

MIN. BORE DEPTH UNDER CONCRETE CULVERT = 6'

SPLICE TO EXISTING

5/14/99

06-OCT-2015 14:44  
 Utilities.dwg  
 B-5395\_UO-2.psh.dgn