

**This electronic collection of documents is provided
for the convenience of the user
and is Not a Certified Document –**

**The documents contained herein were originally issued
and sealed by the individuals whose names and license
numbers appear on each page, on the dates appearing
with their signature on that page.**

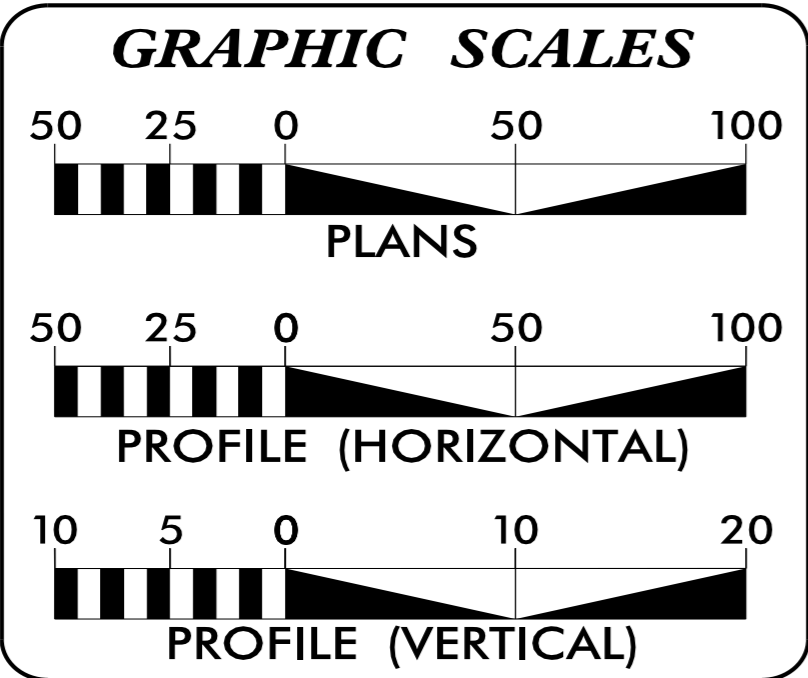
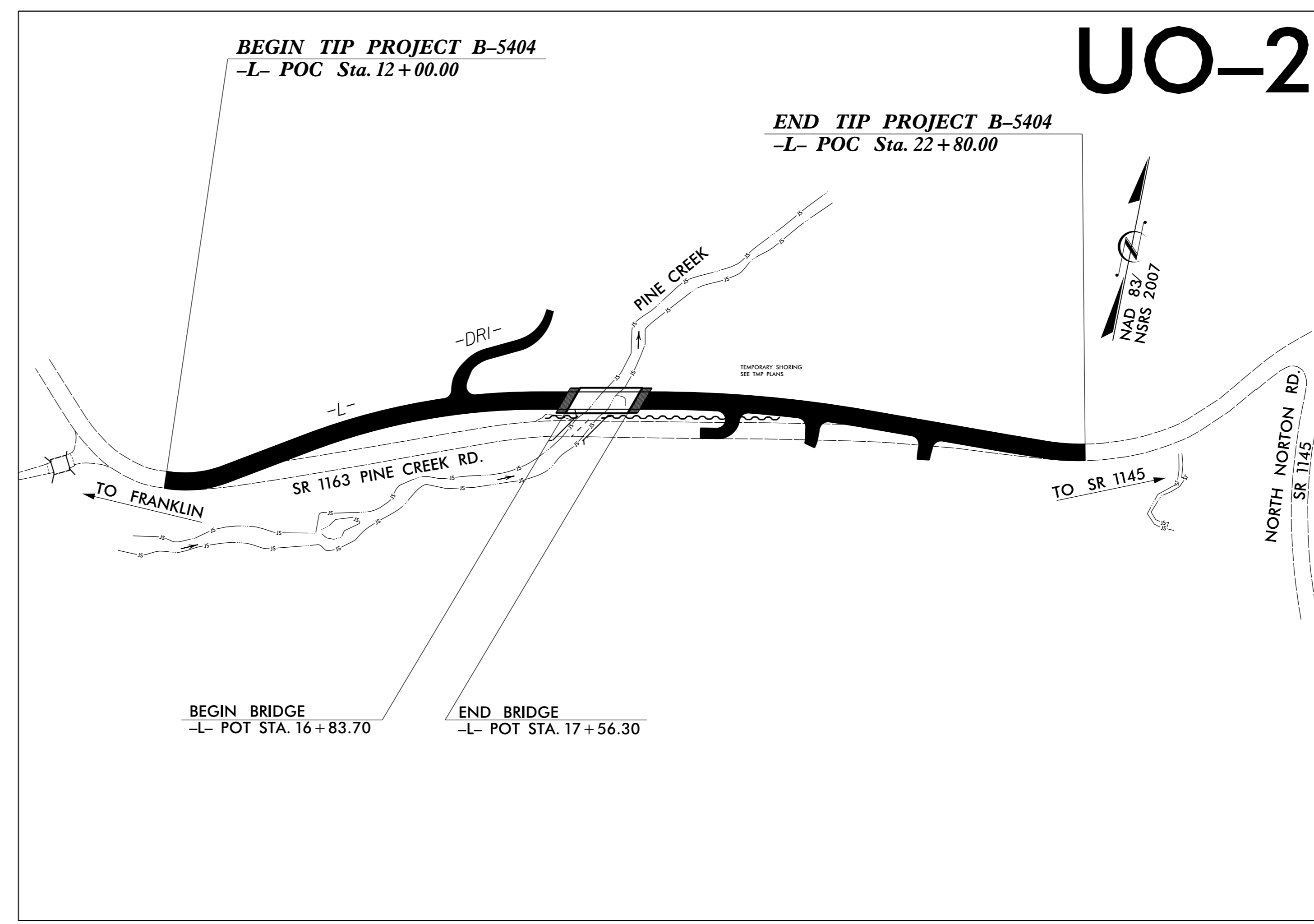
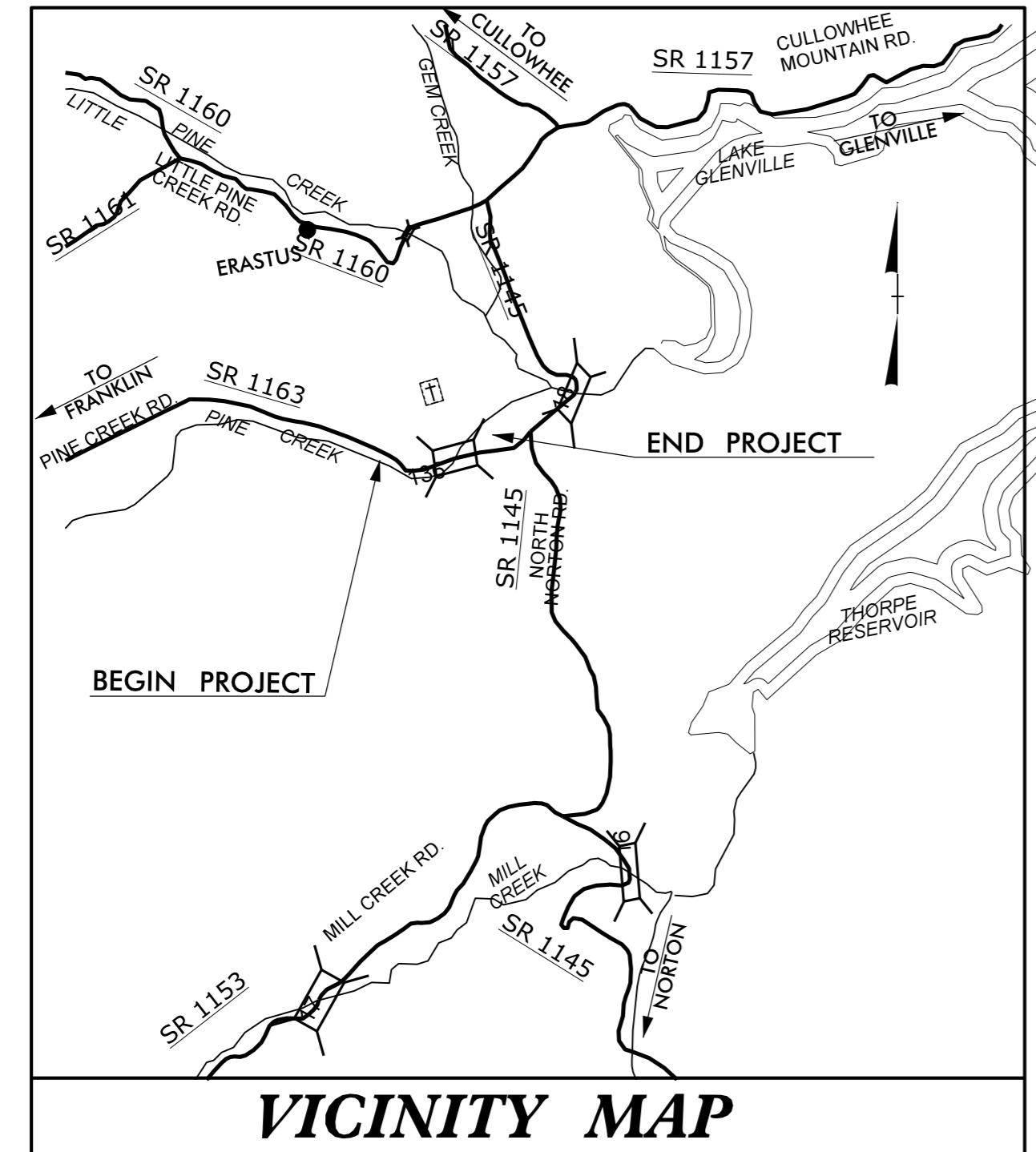
**This file or an individual page
shall not be considered a certified document.**

STATE OF NORTH CAROLINA
DIVISION OF HIGHWAYS

**UTILITIES BY OTHERS PLANS
JACKSON COUNTY**

**LOCATION: BRIDGE NO. 136 OVER PINE CREEK
ON SR 1163 (PINE CREEK ROAD)
TYPE OF WORK: POWER AND TELEPHONE LINE RELOCATION**

TIP PROJECT: B-5404




INDEX OF SHEETS

SHEET NO.	DESCRIPTION
UO-1	TITLE SHEET
UO-2	UTILITY BY OTHERS PLAN SHEETS

UTILITY OWNERS ON PROJECT

(A) TELEPHONE: FRONTIER
(B) POWER: DUKE



PREPARED IN THE OFFICE OF:
**DIVISION OF HIGHWAYS
UTILITIES UNIT
UTILITIES ENGINEERING**

1555 MAIL SERVICES CENTER
RALEIGH, NC 27699-1555
PHONE (919) 707-6690
FAX (919) 250-4151

Roger Worthington, P.E. UTILITIES SECTION ENGINEER
Carl Barclay, P.E. UTILITIES SQUAD LEADER PROJECT ENGINEER
Ali Kouchehi, P.E. UTILITIES PROJECT DESIGNER

UTILITIES BY OTHERS

NOTE:
ALL PROPOSED UTILITY WORK SHOWN ON THIS SHEET WILL BE DONE BY OTHERS. NO PAYMENT WILL BE MADE TO THE CONTRACTOR FOR PROPOSED UTILITY WORK SHOWN ON THIS SHEET.

CURVE DATA FOR -L-

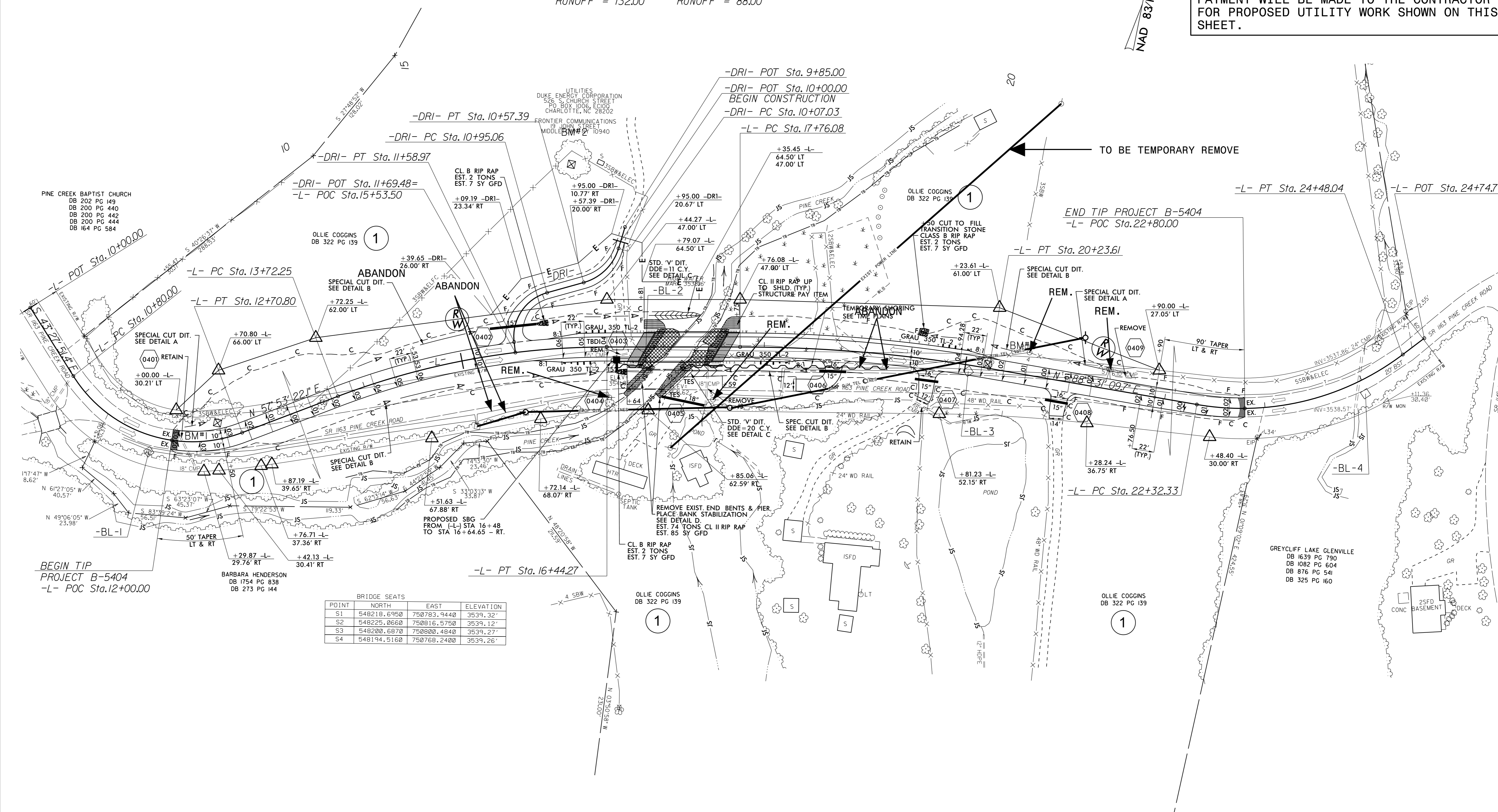
PI Sta. 10+00.00
 $\Delta = 57.42$
 $D = 114.35' 29.6$
 $L = 50.36'$
 $T = 27.55'$
 $R = 50.00'$

$T = 30.00$
 $R = 45.00'$

PI Sta. 15+09.77
 $\Delta = 20.46' 50.8$ (RT)
 $D = 7.38' 22.0$
 $L = 272.02'$
 $T = 137.52'$
 $R = 750.00'$
 $SE = MATCH EXIST.$
 $RUNOFF = 132.00'$

PI Sta. 19+00.15
 $\Delta = 9.50' 56.8$ (RT)
 $D = 3.58' 43.9$
 $L = 247.54'$
 $T = 124.07'$
 $R = 1,440.00'$
 $SE = .04$
 $RUNOFF = 88.00'$

PI Sta. 23+46.67
 $\Delta = 46.59' 31.6$ (LT)
 $D = 21.47' 07.7$
 $L = 215.70'$
 $T = 114.33'$
 $R = 263.00'$
 $SE = MATCH EXIST.$



BRIDGE SEATS

POINT	NORTH	EAST	ELEVATION
S1	548218.6950	750783.9440	3539.32'
S2	548225.0660	750816.5750	3539.12'
S3	548200.6870	750800.4840	3539.27'
S4	548194.5160	750768.2400	3539.26'

5/14/99

19-NOV-2015 14:27 UC:\P\o\B5404_RDY_PSH_04.dgn