

**This electronic collection of documents is provided
for the convenience of the user
and is Not a Certified Document –**

**The documents contained herein were originally issued
and sealed by the individuals whose names and license
numbers appear on each page, on the dates appearing
with their signature on that page.**

**This file or an individual page
shall not be considered a certified document.**

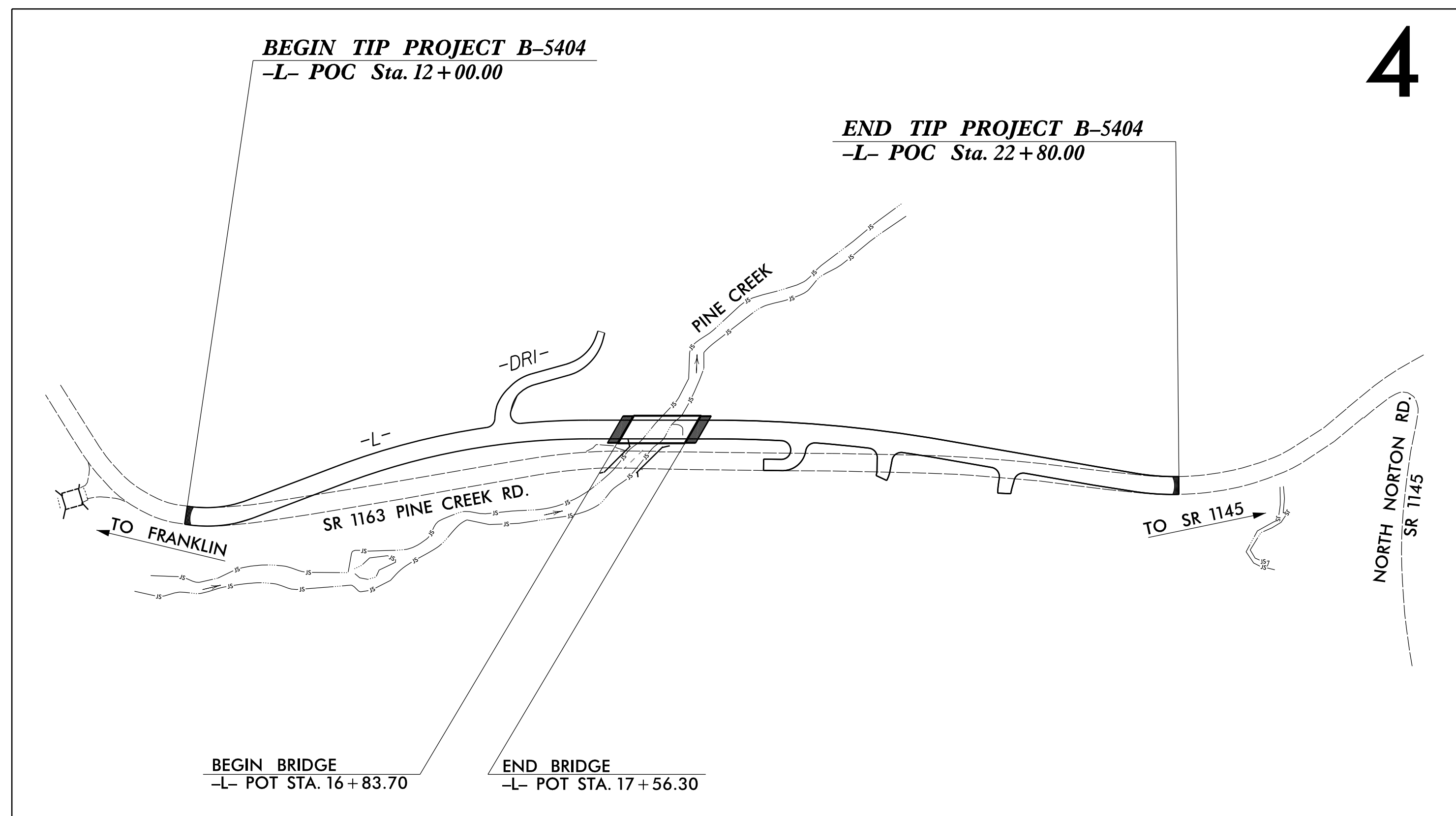
TIP PROJECT: B-5404

STATE OF NORTH CAROLINA
DIVISION OF HIGHWAYS
PLAN FOR PROPOSED
HIGHWAY EROSION CONTROL
JACKSON COUNTY

LOCATION: BRIDGE NO. 136 OVER PINE CREEK

ON SR 1163 (PINE CREEK ROAD)

TYPE OF WORK: GRADING, PAVING, DRAINAGE, AND STRUCTURE



STATE	STATE PROJECT REFERENCE NO.	SHEET NO.	TOTAL SHEETS
N.C.	B-5404	EC-1	
STATE PROJ. NO.	F.A. PROJ. NO.	DESCRIPTION	

EROSION AND SEDIMENT CONTROL MEASURES

Std. #	Description	Symbol
1630.03	Temporary Silt Ditch	TD
1630.05	Temporary Diversion	TD
1605.01	Temporary Silt Fence	III III III
1606.01	Special Sediment Control Fence	~ ~ ~
1622.01	Temporary Berms and Slope Drains	~ ~ ~
1630.02	Silt Basin Type B	[Symbol]
1633.01	Temporary Rock Silt Check Type-A	[Symbol]
	Temporary Rock Silt Check Type-A with Matting and Polyacrylamide (PAM)	[Symbol]
1633.02	Temporary Rock Silt Check Type-B	[Symbol]
	Wattle / Coir Fiber Wattle	[Symbol]
	Wattle / Coir Fiber Wattle with Polyacrylamide (PAM)	[Symbol]
1634.01	Temporary Rock Sediment Dam Type-A	[Symbol]
1634.02	Temporary Rock Sediment Dam Type-B	[Symbol]
1635.01	Rock Pipe Inlet Sediment Trap Type-A	[Symbol]
1635.02	Rock Pipe Inlet Sediment Trap Type-B	[Symbol]
1630.04	Stilling Basin	[Symbol]
1630.06	Special Stilling Basin	[Symbol]
	Rock Inlet Sediment Trap:	
1632.01	Type A	[Symbol]
1632.02	Type B	[Symbol]
1632.03	Type C	[Symbol]
	Skimmer Basin	[Symbol]
	Tiered Skimmer Basin	[Symbol]
	Infiltration Basin	[Symbol]

THIS PROJECT CONTAINS EROSION CONTROL PLANS FOR CLEARING AND GRUBBING PHASE OF CONSTRUCTION.

THIS PROJECT HAS BEEN DESIGNED TO SENSITIVE WATERSHED STANDARDS.

ENVIRONMENTALLY SENSITIVE AREA(S) EXIST ON THIS PROJECT
Refer To E. C. Special Provisions for Special Considerations.

GRAPHIC SCALE

0 [Scale Bar]

PLANS

0 [Scale Bar]

PROFILE (HORIZONTAL)

0 [Scale Bar]

PROFILE (VERTICAL)

0 [Scale Bar]

ROADSIDE ENVIRONMENTAL UNIT
DIVISION OF HIGHWAYS
STATE OF NORTH CAROLINA

THESE EROSION AND SEDIMENT CONTROL PLANS COMPLY WITH THE REGULATIONS SET FORTH BY THE NCG-010000 GENERAL CONSTRUCTION PERMIT EFFECTIVE AUGUST 3, 2011 ISSUED BY THE NORTH CAROLINA DEPARTMENT OF ENVIRONMENT AND NATURAL RESOURCES DIVISION OF WATER QUALITY.

Prepared in the Office of:
ROADSIDE ENVIRONMENTAL UNIT
1 South Wilmington St.
Raleigh, NC 27611

2012 STANDARD SPECIFICATIONS

Designed by:

Noelle Ring 3456
NAME LEVEL III CERTIFICATION NO.

Roadway Standard Drawings

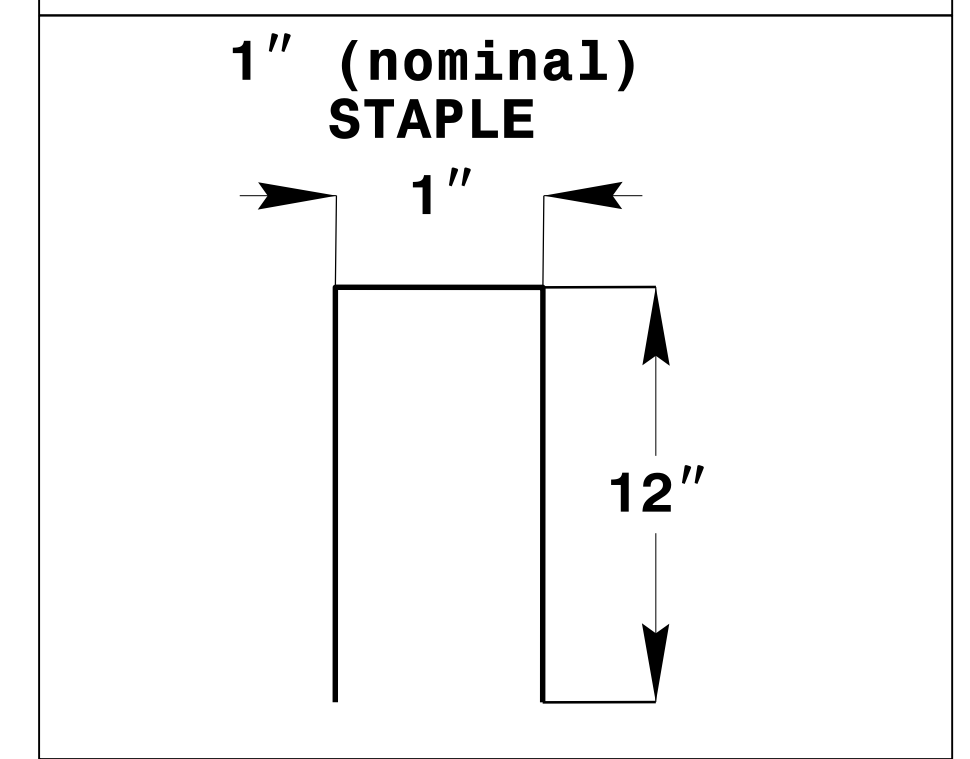
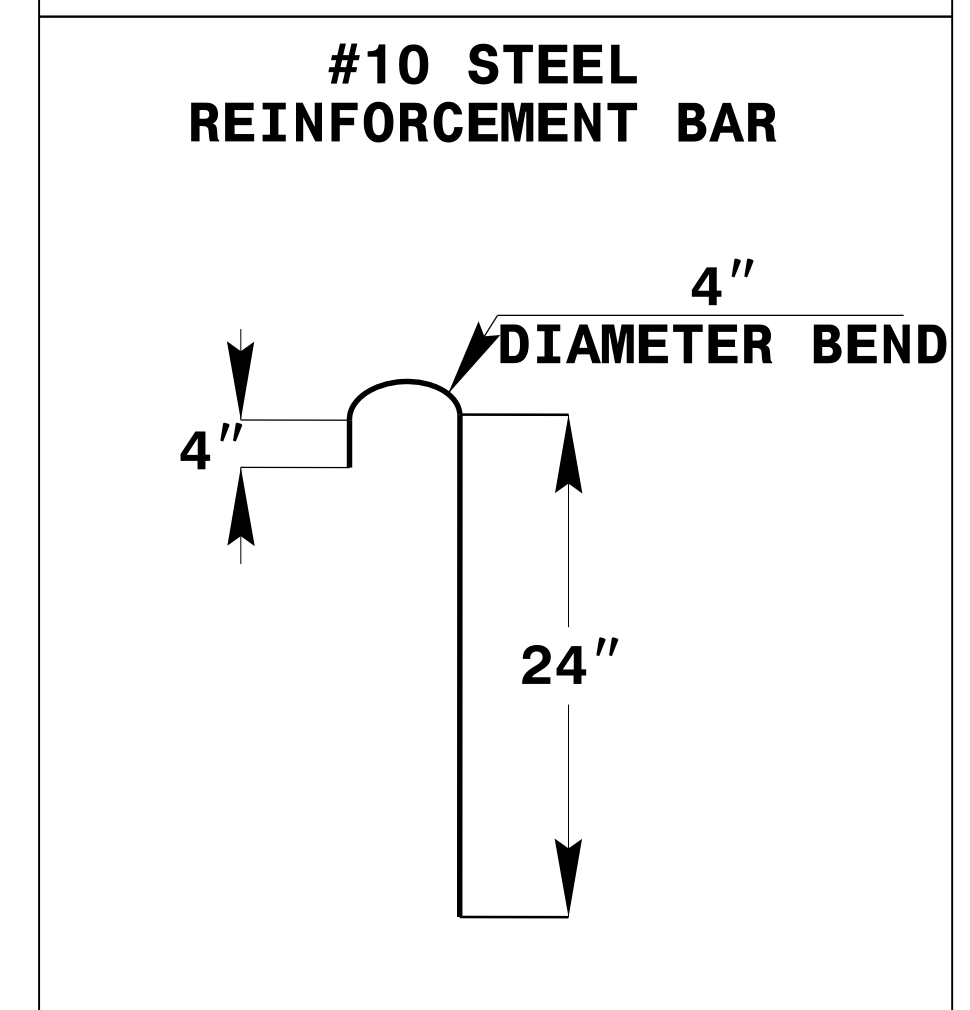
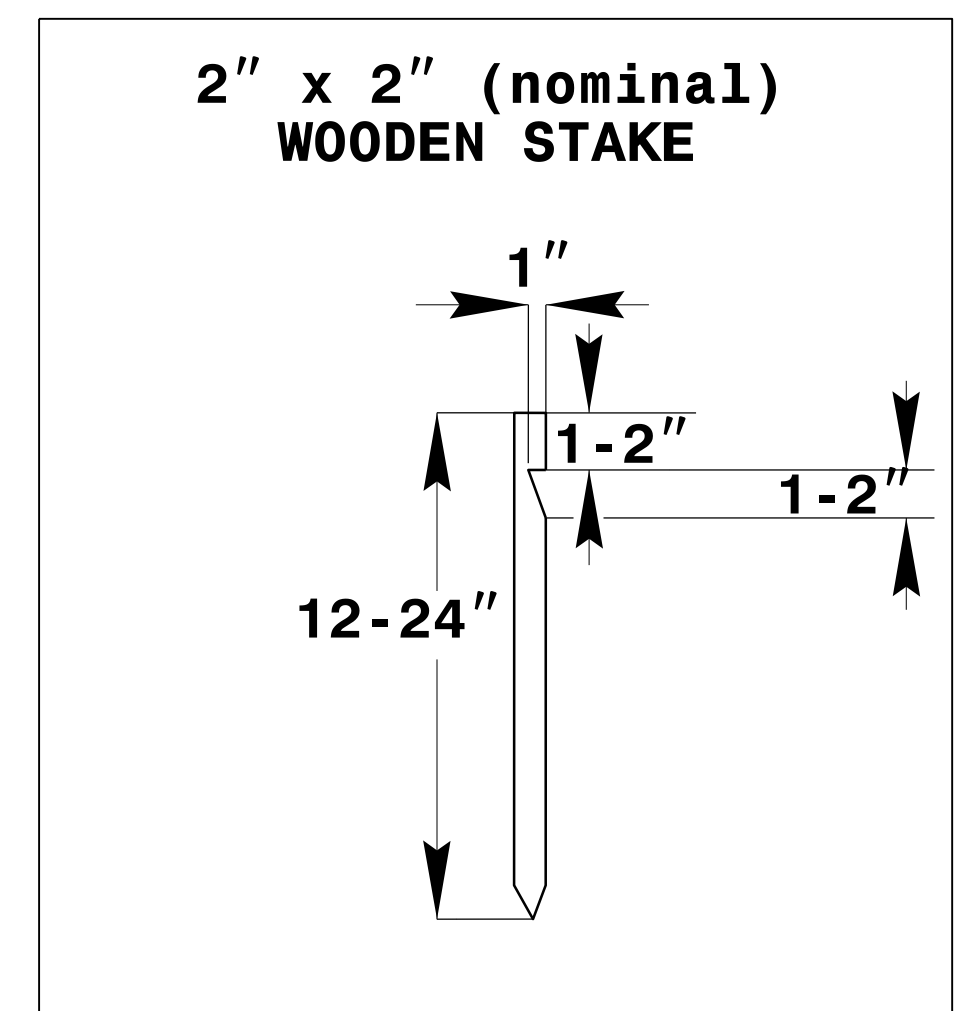
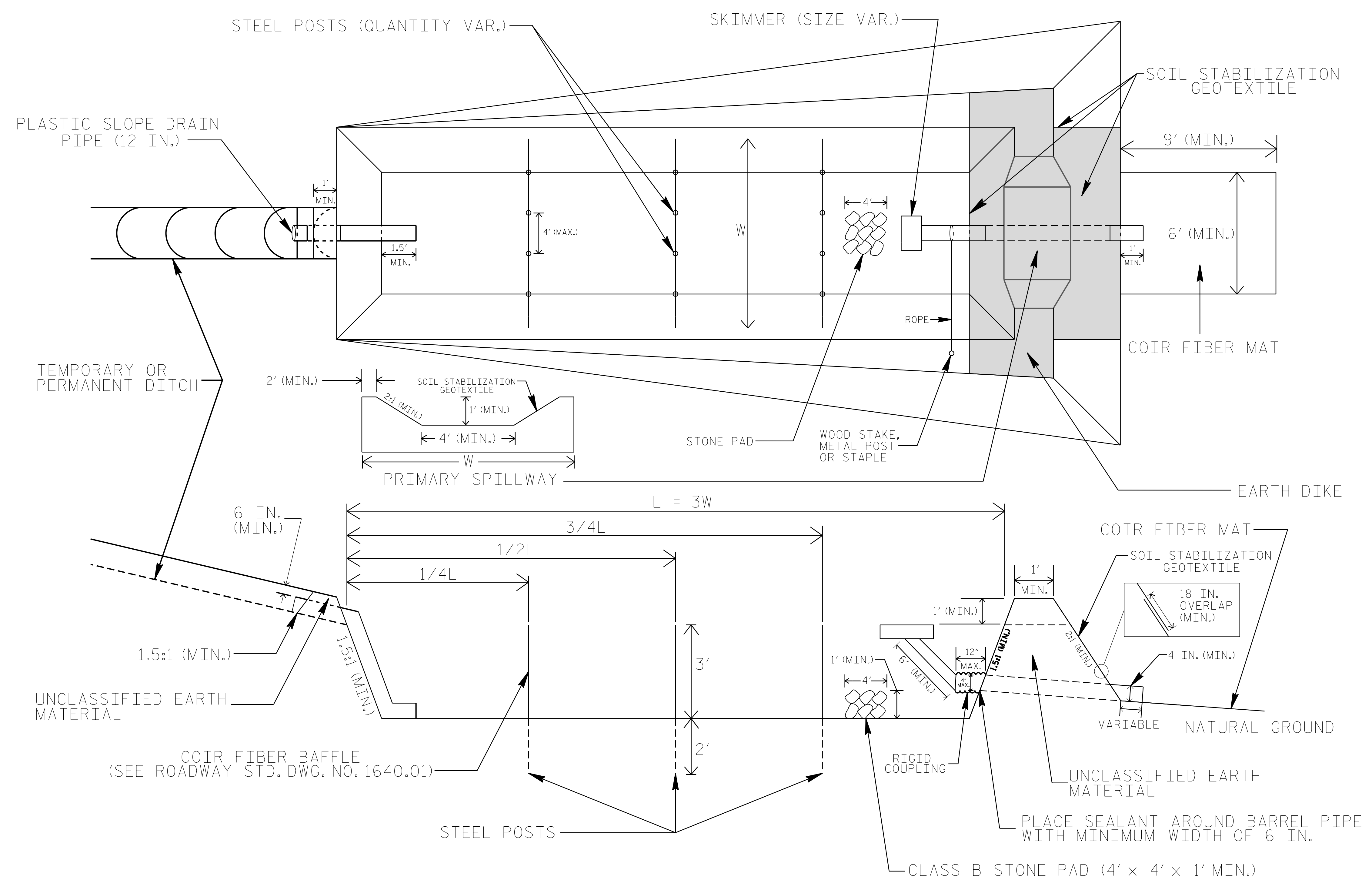
The following roadway english standards as appear in "Roadway Standard Drawings"- Roadway Design Unit - N. C. Department of Transportation - Raleigh, N. C., dated January 2012 and the latest revision thereto are applicable to this project and by reference hereby are considered a part of these plans.

1604.01 Railroad Erosion Control Detail	1632.01 Rock Inlet Sediment Trap Type A
1605.01 Temporary Silt Fence	1632.02 Rock Inlet Sediment Trap Type B
1606.01 Special Sediment Control Fence	1632.03 Rock Inlet Sediment Trap Type C
1607.01 Gravel Construction Entrance	1633.01 Temporary Rock Silt Check Type A
1622.01 Temporary Berms and Slope Drains	1633.02 Temporary Rock Silt Check Type B
1630.01 Riser Basin	1634.01 Temporary Rock Sediment Dam Type A
1630.02 Silt Basin Type B	1634.02 Temporary Rock Sediment Dam Type B
1630.03 Temporary Silt Ditch	1635.01 Rock Pipe Inlet Sediment Trap Type A
1630.04 Stilling Basin	1635.02 Rock Pipe Inlet Sediment Trap Type B
1630.05 Temporary Diversion	1640.01 Coir Fiber Baffle
1630.06 Special Stilling Basin	1645.01 Temporary Stream Crossing
1631.01 Matting Installation	

P:\ENVI\PROJECTS\2015\11\15\B5404_EC_1.tsh.dgn 29-SEP-2015 11:15

PROJECT REFERENCE NO. B-5404	SHEET NO. EC-2
RW SHEET NO.	
ROADWAY DESIGN ENGINEER	HYDRAULICS ENGINEER

SKIMMER BASIN WITH BAFFLES DETAIL



COIR FIBER MAT ANCHOR OPTIONS

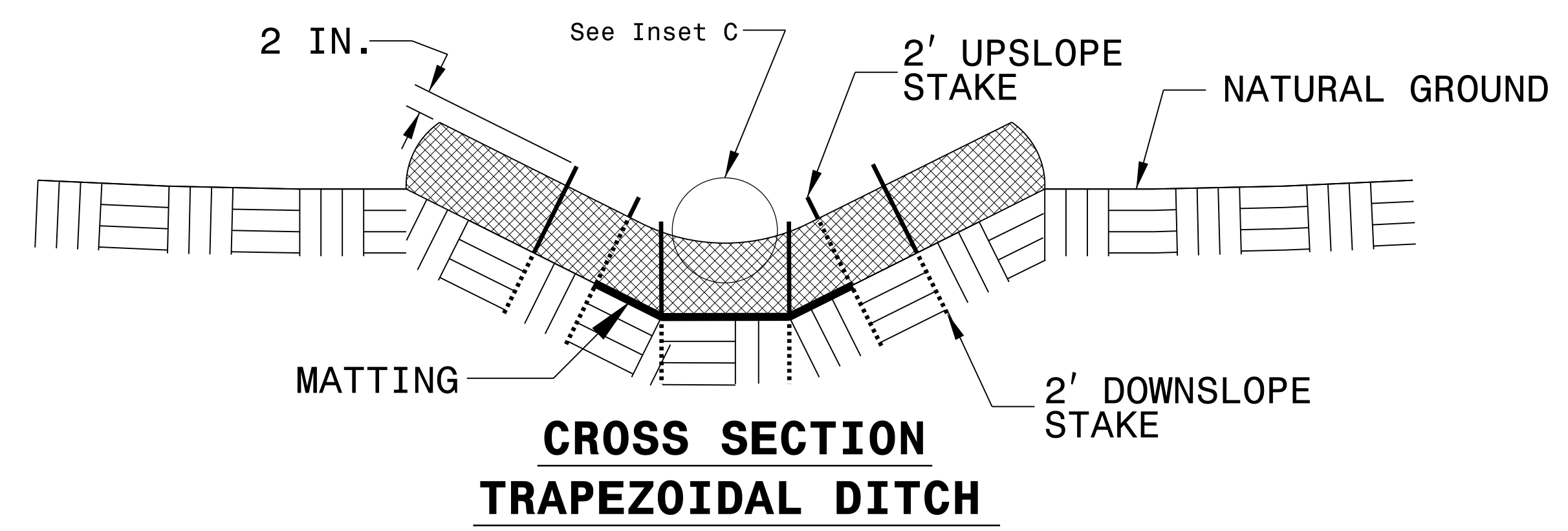
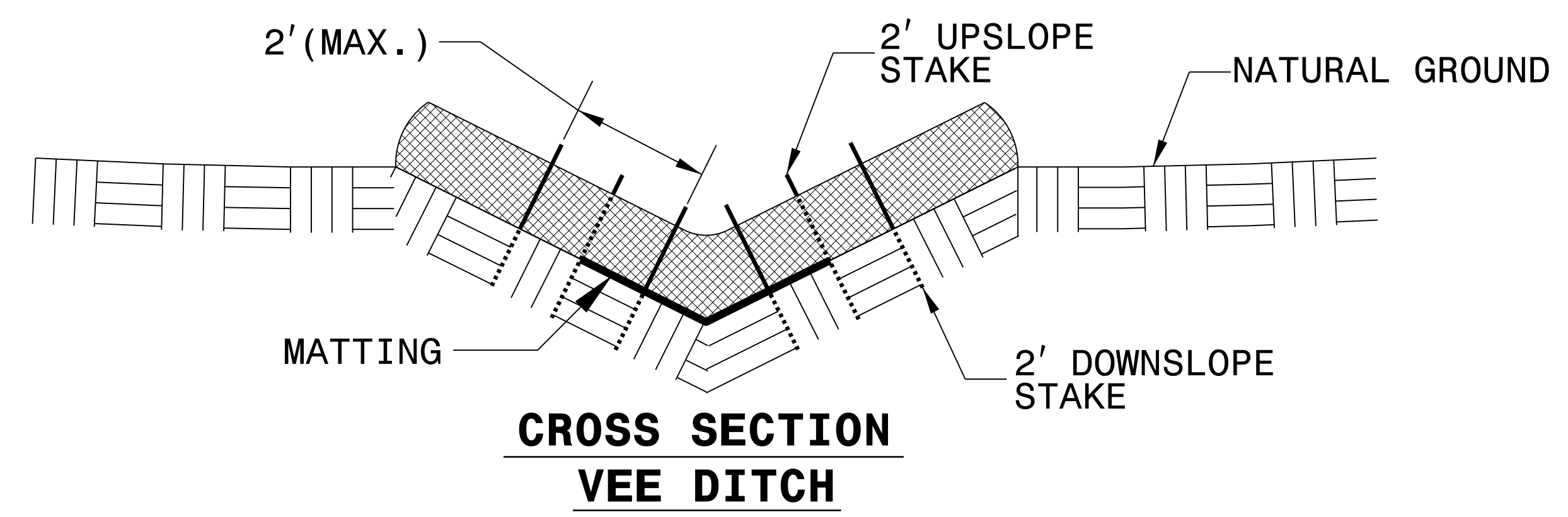
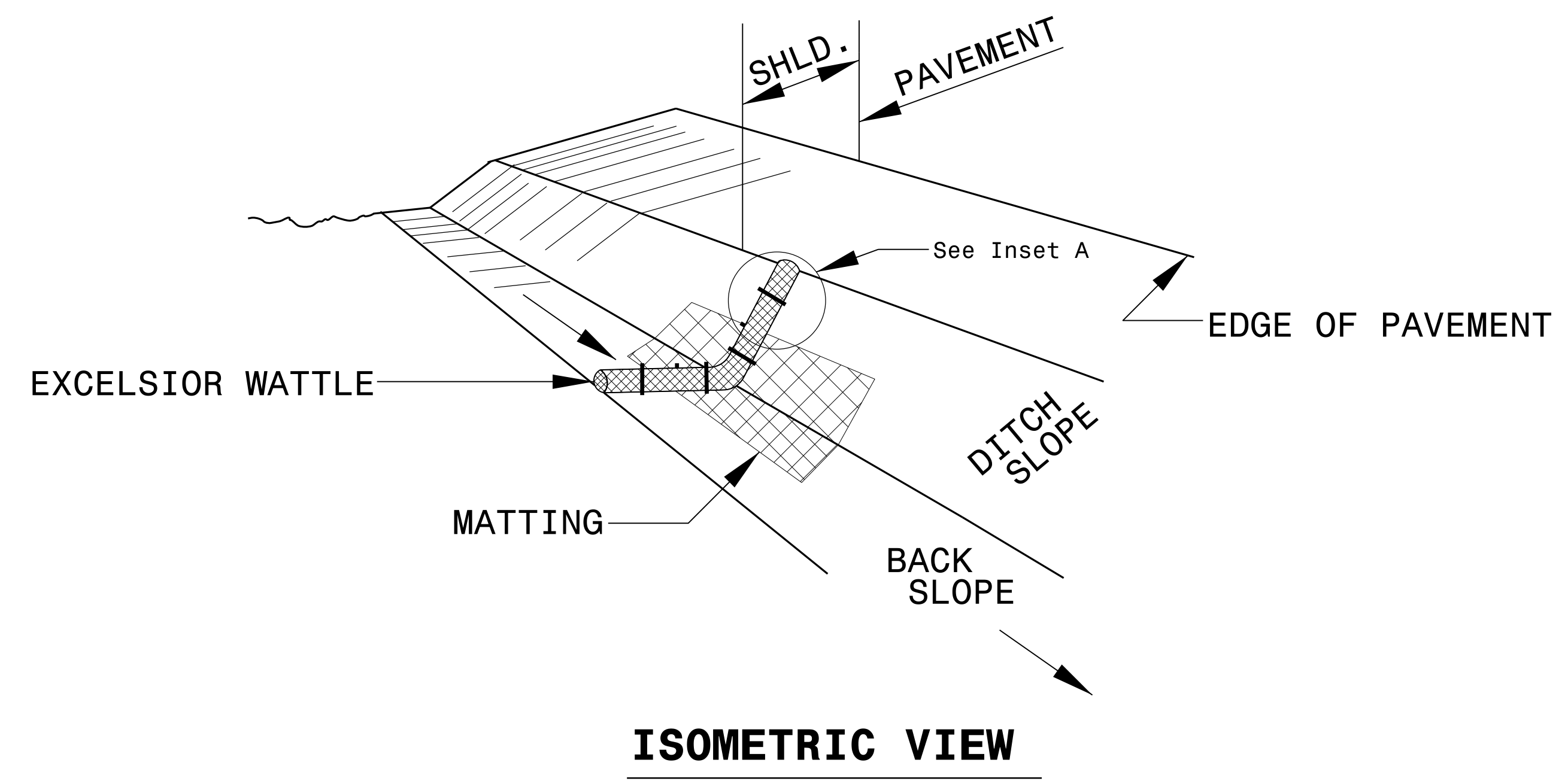
NOTES

1. SEED AND PLACE MATTING FOR EROSION CONTROL ON INTERIOR AND EXTERIOR SIDESLOPES.
2. LIMIT EARTH DIKE HEIGHT TO 5 FT.
3. FOR BASIN DEPTH OF 3 FT., THE MINIMUM BASIN WIDTH SHALL BE 9 FT.
4. DETERMINE PRIMARY SPILLWAY WEIR LENGTH (FT.) USING $Q/0.8$, WHERE Q IS FLOW RATE (CFS) INTO BASIN.
5. PLASTIC SLOPE DRAIN PIPE AT INLET OF BASIN MAY BE REPLACED BY FILTRATION GEOTEXTILE OR TARP AS DIRECTED.
6. SOIL STABILIZATION GEOTEXTILE FOR PRIMARY SPILLWAY SHALL BE ONE CONTINUOUS PIECE OF MATERIAL OR OVERLAPPED 18 IN. (MIN.).

NOT TO SCALE

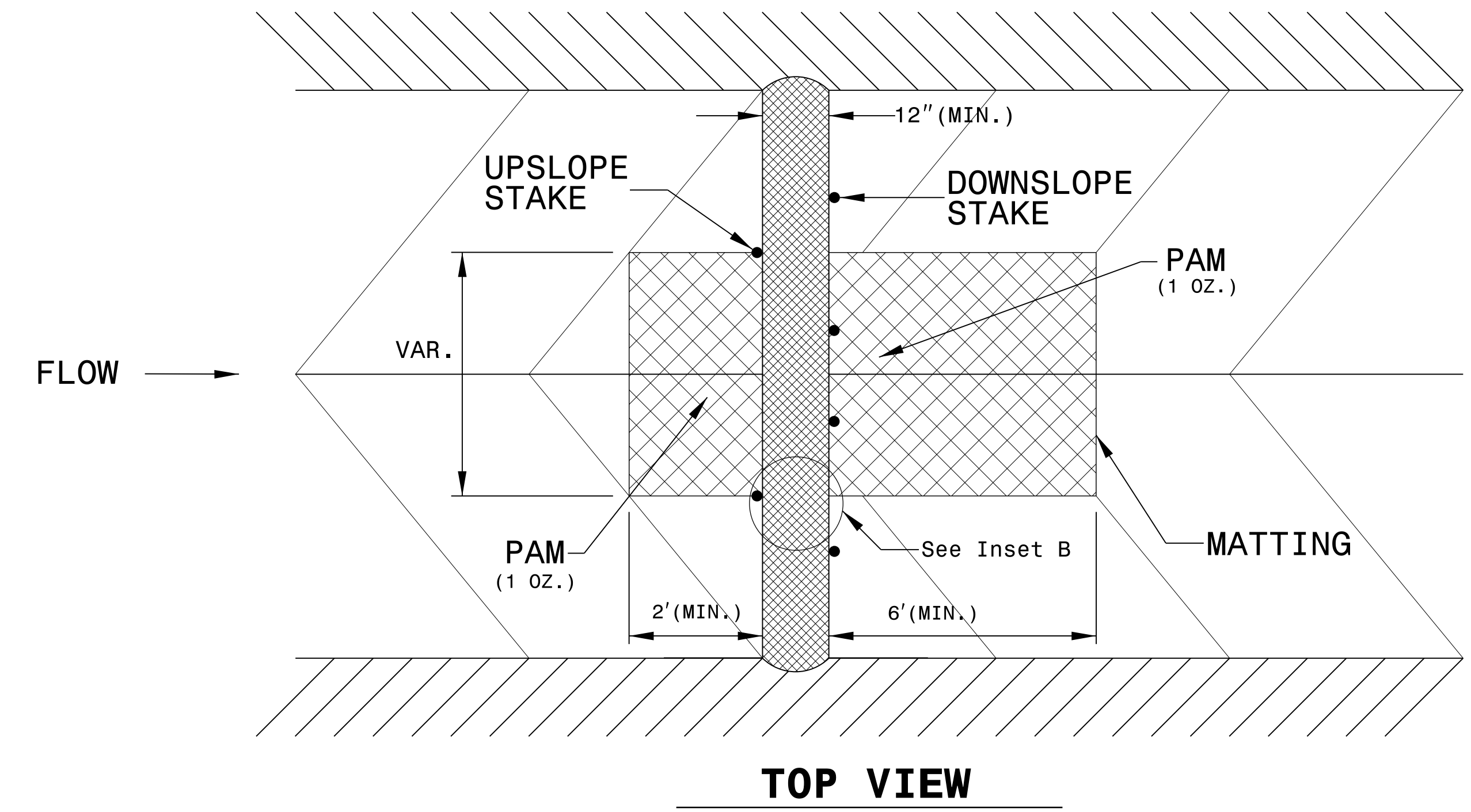
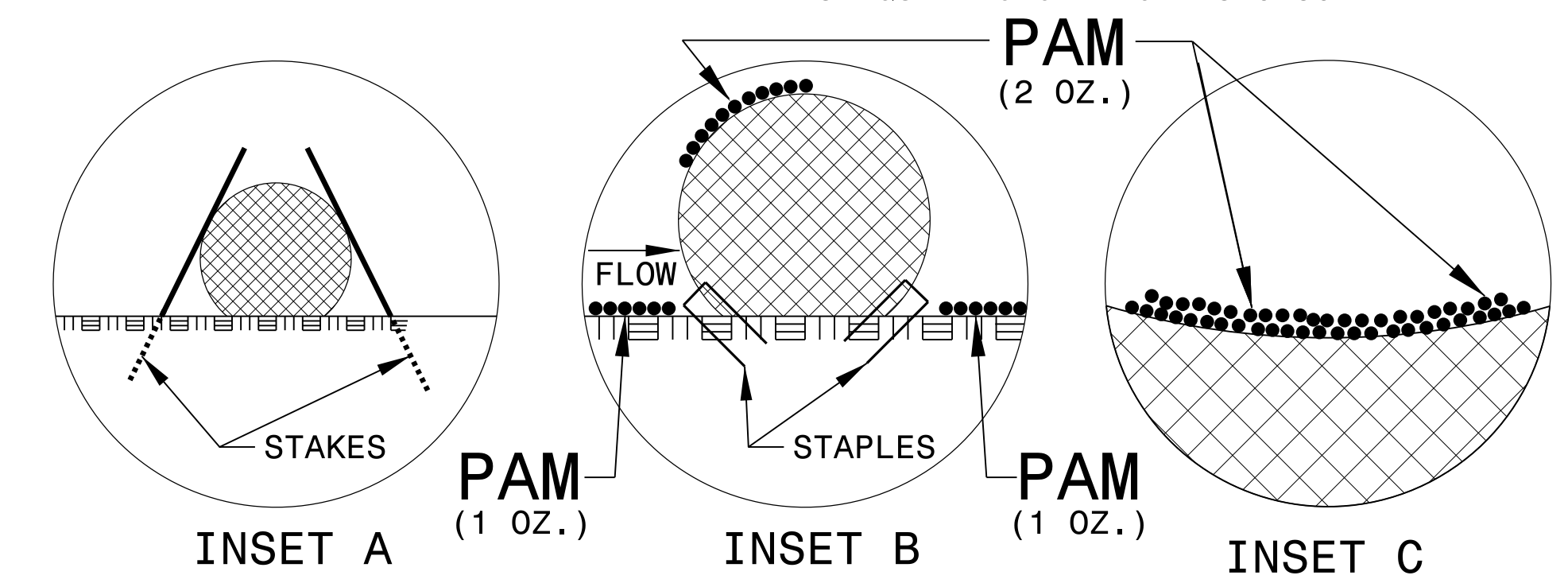
PROJECT REFERENCE NO. B-5404	SHEET NO. EC-2A
RW SHEET NO.	
ROADWAY DESIGN ENGINEER	HYDRAULICS ENGINEER

WATTLE WITH POLYACRYLAMIDE (PAM) DETAIL



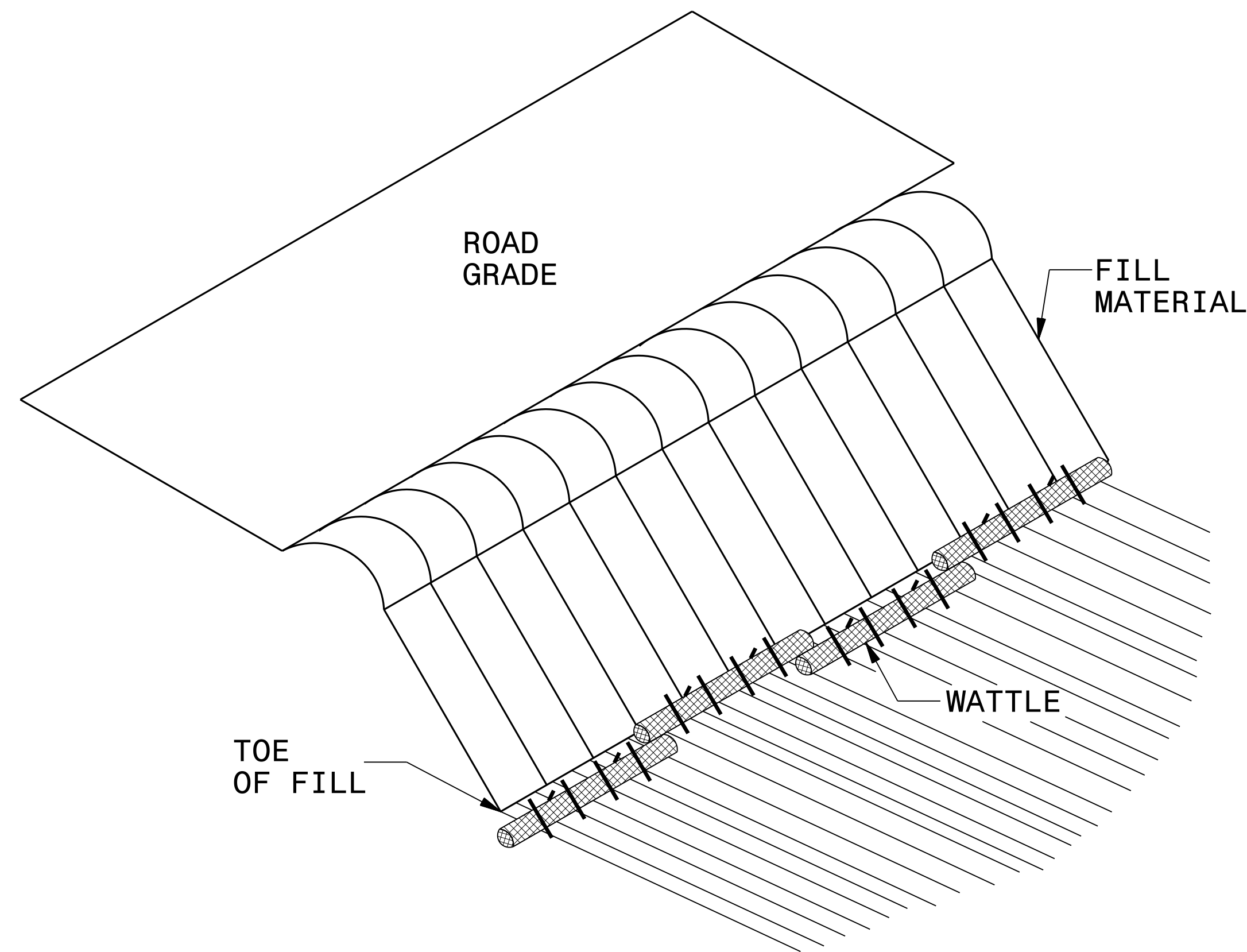
NOTES:

- USE MINIMUM 12 IN. DIAMETER EXCELSIOR WATTLE.
- USE 2 FT. WOODEN STAKES WITH A 2 IN. BY 2 IN. NOMINAL CROSS SECTION.
- ONLY INSTALL WATTLE(S) TO A HEIGHT IN DITCH SO FLOW WILL NOT WASH AROUND WATTLE AND SCOUR DITCH SLOPES AND AS DIRECTED.
- INSTALL A MINIMUM OF 2 UPSLOPE STAKES AND 4 DOWNSLOPE STAKES AT AN ANGLE TO WEDGE WATTLE TO BOTTOM OF DITCH.
- PROVIDE STAPLES MADE OF 0.125 IN. DIAMETER STEEL WIRE FORMED INTO A U SHAPE NOT LESS THAN 12" IN LENGTH.
- INSTALL STAPLES APPROXIMATELY EVERY 1 LINEAR FOOT ON BOTH SIDES OF WATTLE AND AT EACH END TO SECURE IT TO THE SOIL.
- INSTALL MATTING IN ACCORDANCE WITH SECTION 1631 OF THE STANDARD SPECIFICATIONS.
- PRIOR TO POLYACRYLAMIDE (PAM) APPLICATION, OBTAIN A SOIL SAMPLE FROM PROJECT LOCATION, AND FROM OFFSITE MATERIAL, AND ANALYZE FOR APPROPRIATE PAM FLOCCULANT TO BE APPLIED TO EACH WATTLE.
- INITIALLY APPLY 2 OUNCES OF ANIONIC OR NEUTRALLY CHARGED PAM OVER WATTLE WHERE WATER WILL FLOW AND 1 OUNCE OF PAM ON MATTING ON EACH SIDE OF WATTLE. REAPPLY PAM AFTER EVERY RAINFALL EVENT THAT IS EQUAL TO OR EXCEEDS 0.50 IN.

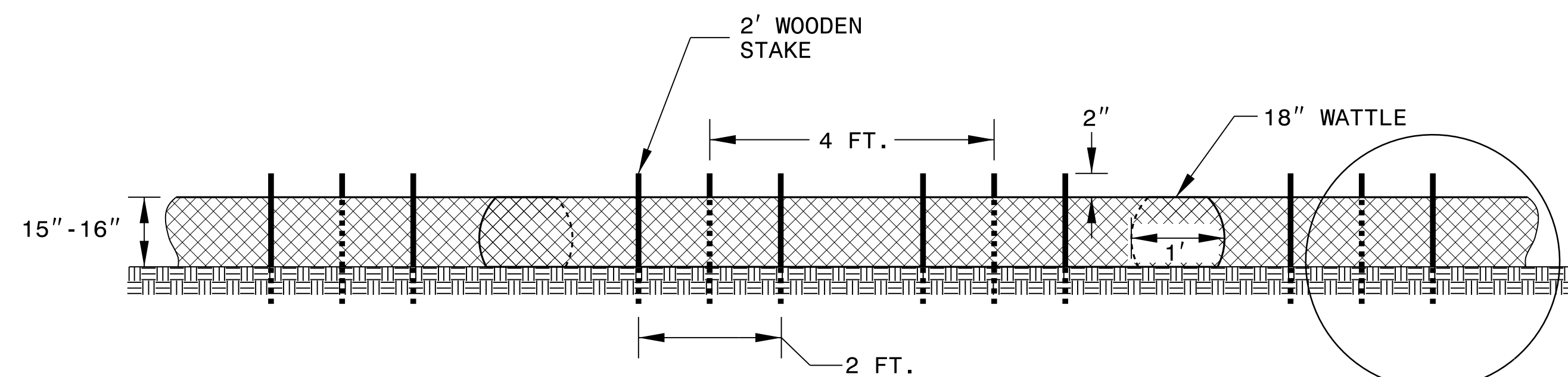


PROJECT REFERENCE NO. <i>B-5404</i>	SHEET NO. <i>EC-2B</i>
RW SHEET NO.	
ROADWAY DESIGN ENGINEER	HYDRAULICS ENGINEER

COIR FIBER WATTLE BARRIER DETAIL



ISOMETRIC VIEW



FRONT VIEW

NOTES:

USE MINIMUM 18 IN. NOMINAL DIAMETER COIR FIBER (COCONUT) WATTLE AND LENGTH OF 10 FT.

EXCAVATE A 2 TO 3 INCH TRENCH FOR WATTLE TO BE PLACED.

DO NOT PLACE WATTLES ON TOE OF SLOPE.

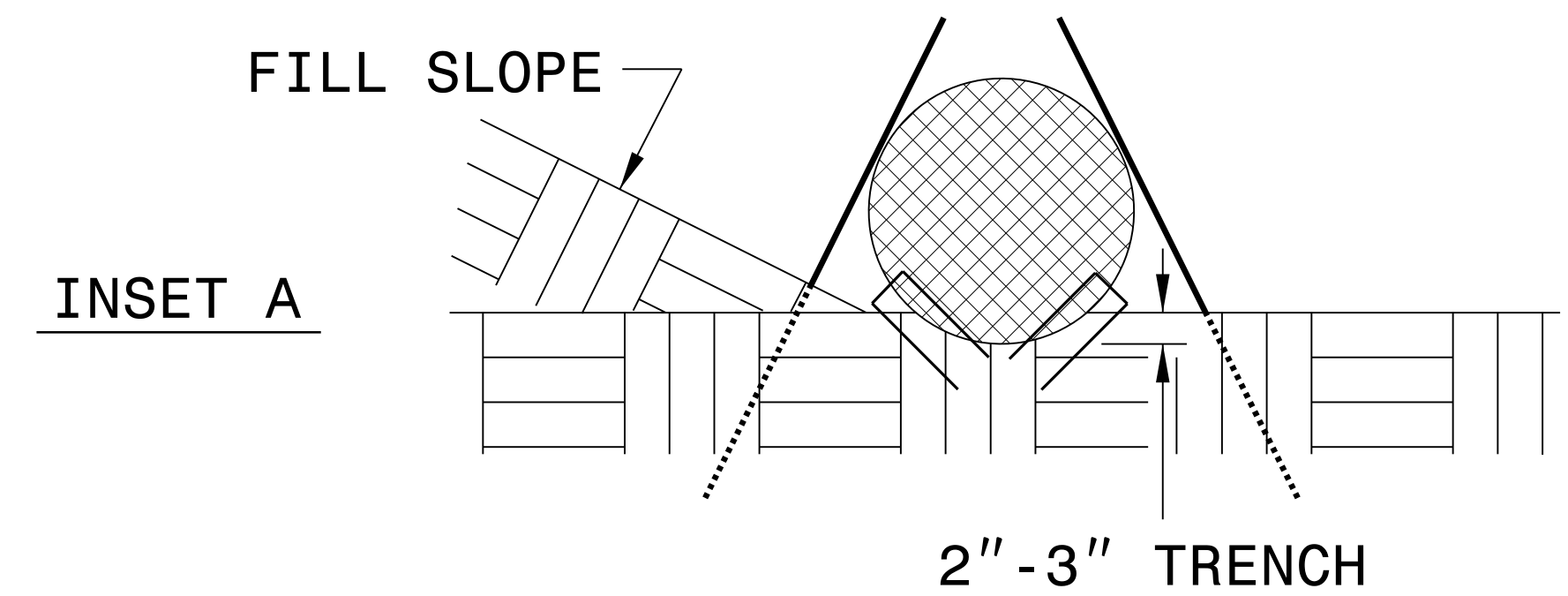
USE 2 FT. WOODEN STAKES WITH A 2 IN. BY 2 IN. NOMINAL CROSS SECTION.

INSTALL A MINIMUM OF 2 UPSLOPE STAKES AND 4 DOWNSLOPE STAKES AT AN ANGLE TO WEDGE WATTLE TO GROUND.

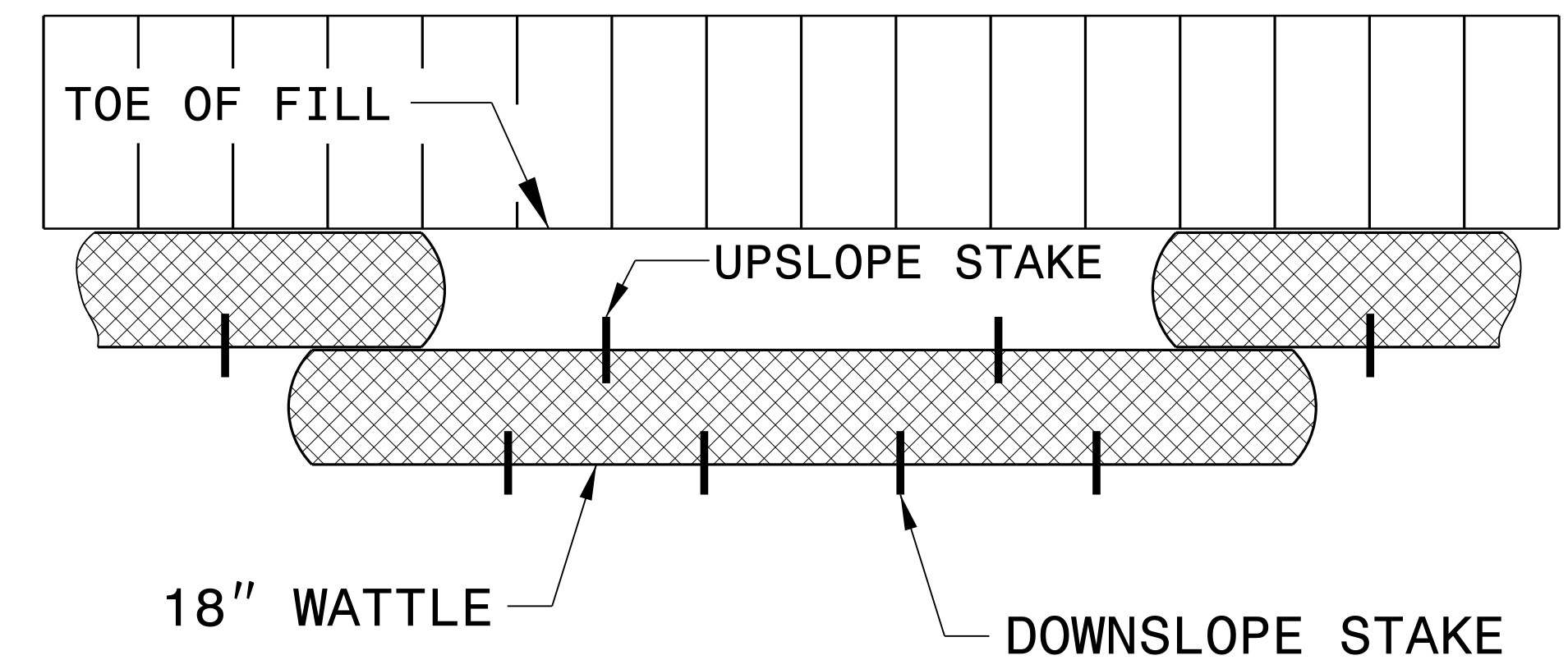
PROVIDE STAPLES MADE OF 0.125 IN. DIAMETER STEEL WIRE FORMED INTO A U SHAPE NOT LESS THAN 12" IN LENGTH.

INSTALL STAPLES APPROXIMATELY EVERY 1 LINEAR FOOT ON BOTH SIDES OF WATTLE AND AT EACH END TO SECURE IT TO THE SOIL.

FOR BREAKS ALONG LARGE SLOPES, USE MAXIMUM SPACING OF 25 FT.



INSET A



TOP VIEW

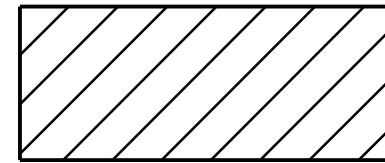
DIVISION OF HIGHWAYS
STATE OF NORTH CAROLINA

PROJECT REFERENCE NO. <i>B-5404</i>	SHEET NO. <i>EC-3</i>
ROADWAY DESIGN ENGINEER	HYDRAULICS ENGINEER

SOIL STABILIZATION TIMEFRAMES

<i>SITE DESCRIPTION</i>	<i>STABILIZATION TIME</i>	<i>TIMEFRAME EXCEPTIONS</i>
PERIMETER DIKES, SWALES, DITCHES AND SLOPES	7 DAYS	NONE
HIGH QUALITY WATER (HQW) ZONES	7 DAYS	NONE
SLOPES STEEPER THAN 3:1	7 DAYS	IF SLOPES ARE 10' OR LESS IN LENGTH AND ARE NOT STEEPER THAN 2:1, 14 DAYS ARE ALLOWED.
SLOPES 3:1 OR FLATTER	14 DAYS	7 DAYS FOR SLOPES GREATER THAN 50' IN LENGTH.
ALL OTHER AREAS WITH SLOPES FLATTER THAN 4:1	14 DAYS	NONE, EXCEPT FOR PERIMETERS AND HQW ZONES.

5/14/99
 29-SEP-2015 09:52
 R:\Environment\Projects\B5404_EC_PSH_04.dgn
 User: AT-BENNY



ENVIRONMENTALLY SENSITIVE AREA
SEE PROJECT SPECIAL PROVISIONS

NAD 83 NSRS 2007

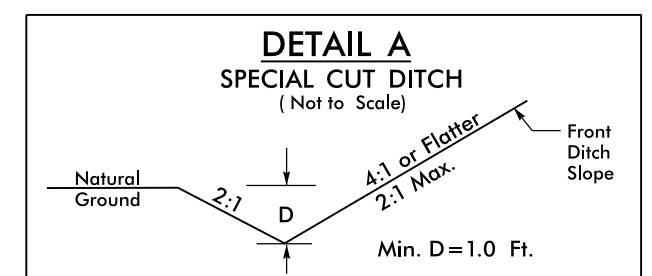
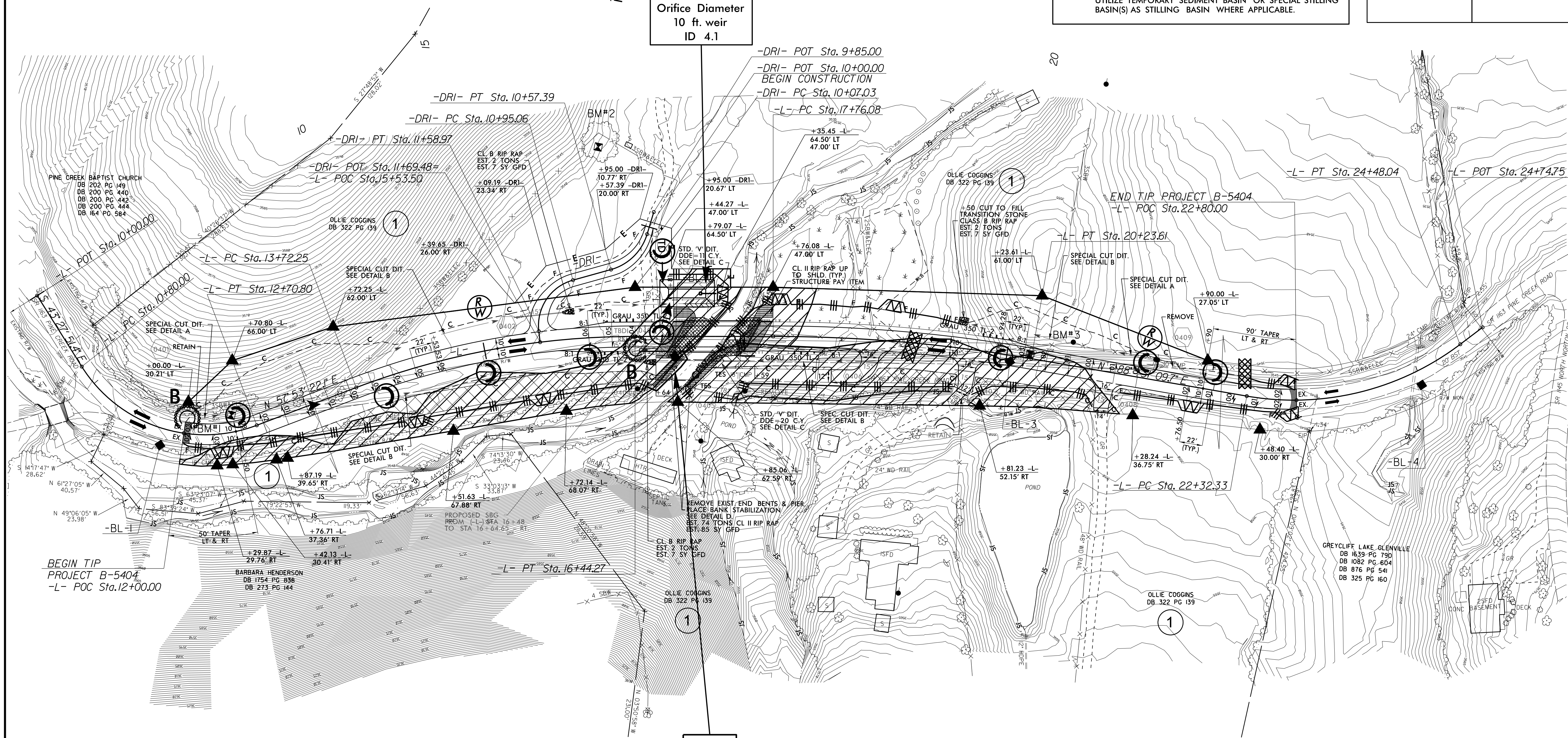
52 x 26 x 3
1.5 inch Skimmer
with 1.0 inch
Orifice Diameter
10 ft. weir
ID 4.1

CLEARING AND GRUBBING
EROSION CONTROL FOR
CONSTRUCTION SHEET 4

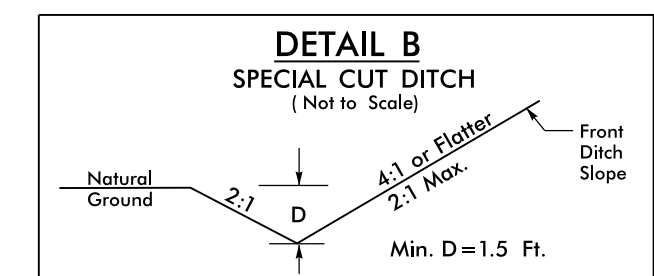
PROJECT REFERENCE NO.	SHEET NO.
B-5404	EC-4/CONST.4
RW SHEET NO.	
ROADWAY DESIGN ENGINEER	HYDRAULICS ENGINEER

NOTE:
PLACE TEMPORARY ROCK SEDIMENT DAMS TYPE - B AND TEMPORARY ROCK SILT CHECKS TYPE - A AT DRAINAGE OUTLETS.

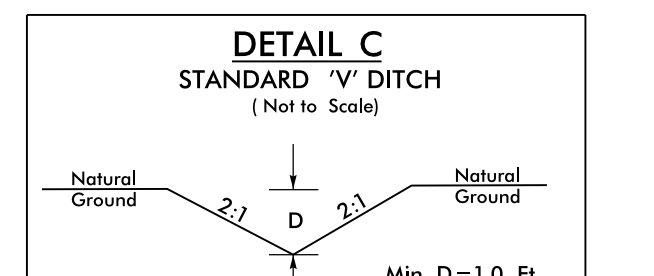
NOTE:
UTILIZE TEMPORARY SEDIMENT BASIN OR SPECIAL STILLING BASIN(S) AS STILLING BASIN WHERE APPLICABLE.



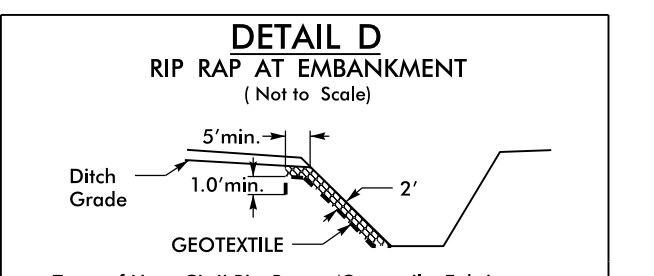
TRANSITION DITCH
FROM (-L-) STA. 12+10 TO STA. 12+50 - LEFT
FROM (-L-) STA. 21+00 TO STA. 21+50 - LEFT



FROM (-L-) STA. 14+00 TO STA. 16+84 - LEFT
FROM (-L-) STA. 14+00 TO STA. 16+74 (-L-) - RIGHT
FROM (-L-) STA. 17+59 TO STA. 19+00 (-L-) - RIGHT
FROM (-L-) STA. 19+50 TO STA. 20+50 (-L-) - LEFT



FROM (-L-) STA. 16+84 TO STA. 17+36 - LEFT
FROM (-L-) STA. 17+19 TO STA. 17+59 - RIGHT



Type of Liner: CL II Rip-Rap w/ Geotextile Fabric
(-L-) STA. 16+74 - RIGHT
(-L-) STA. 17+19 - RIGHT

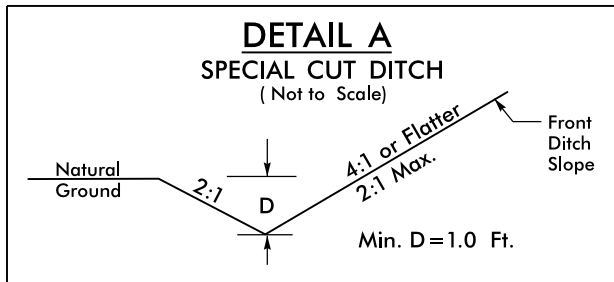
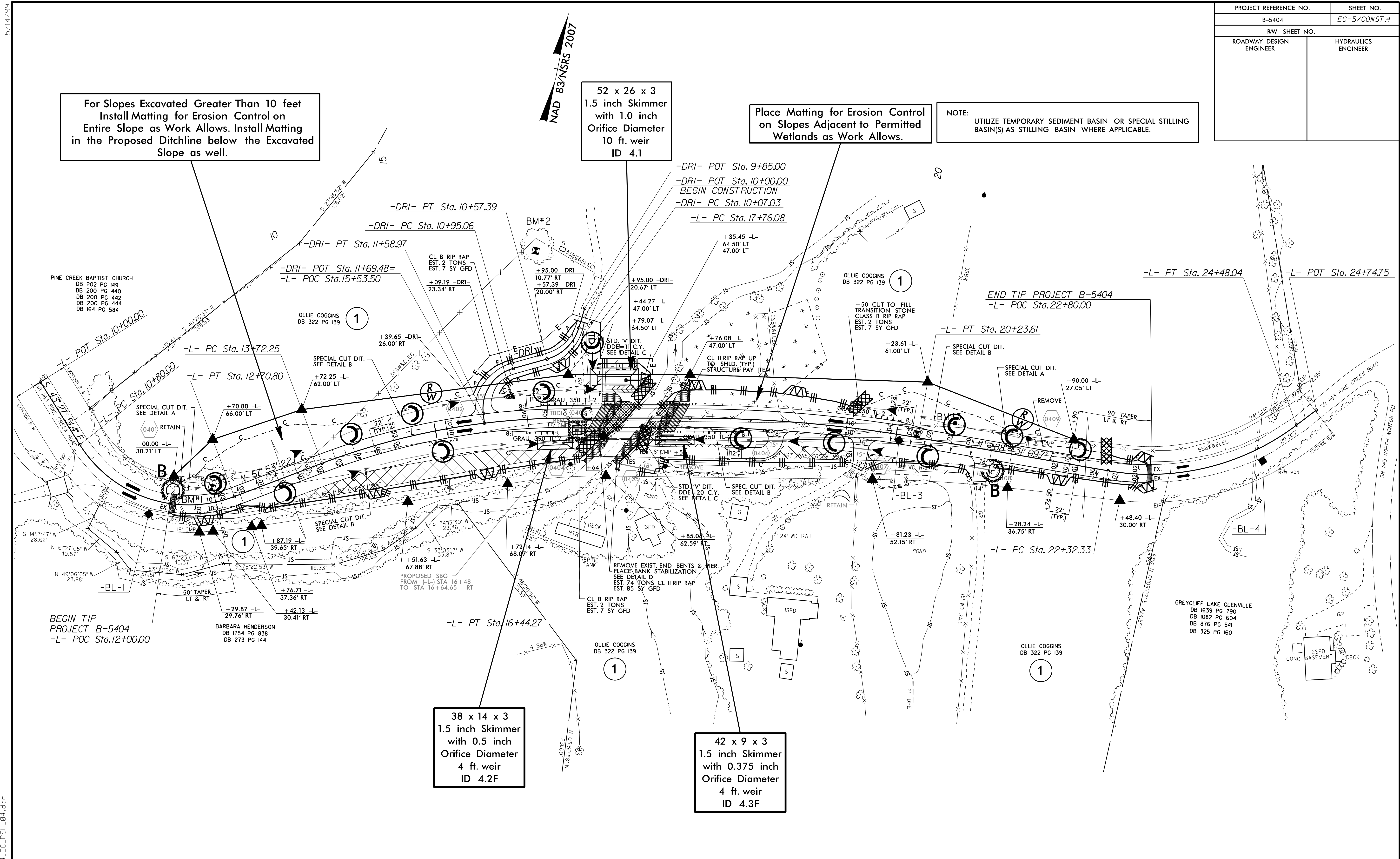
PROJECT REFERENCE NO.		SHEET NO.	
B-5404		EC-5/CONST.4	
RW SHEET NO.			
ROADWAY DESIGN ENGINEER		HYDRAULICS ENGINEER	

For Slopes Excavated Greater Than 10 feet
Install Matting for Erosion Control on
Entire Slope as Work Allows. Install Matting
in the Proposed Ditchline below the Excavated
Slope as well.

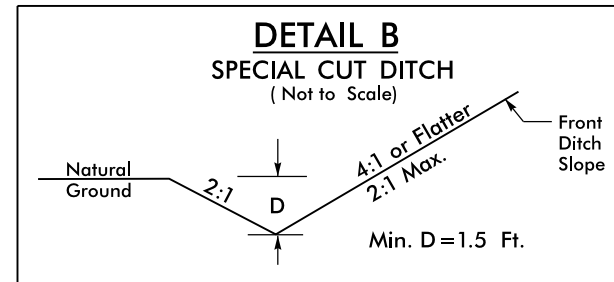
52 x 26 x 3
1.5 inch Skimmer
with 1.0 inch
Orifice Diameter
10 ft. weir
ID 4.1

Place Matting for Erosion Control
on Slopes Adjacent to Permitted
Wetlands as Work Allows.

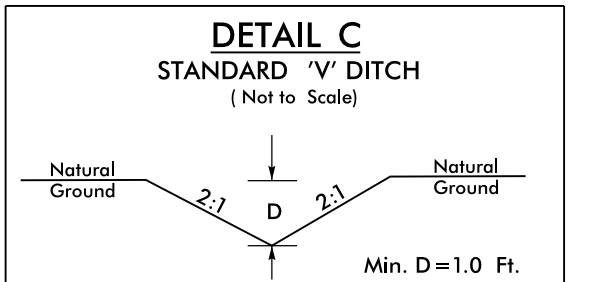
NOTE:
UTILIZE TEMPORARY SEDIMENT BASIN OR SPECIAL STILLING
BASIN(S) AS STILLING BASIN WHERE APPLICABLE.



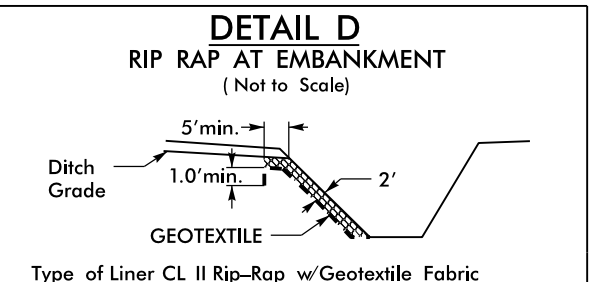
TRANSITION DITCH
FROM (-L-) STA. 12+10 TO STA. 12+50 - LEFT
FROM (-L-) STA. 21+00 TO STA. 21+50 - LEFT



FROM (-L-) STA. 14+00 TO STA. 16+84 - LEFT
FROM (-L-) STA. 14+00 TO STA. 16+74 (-L-) - RIGHT
FROM (-L-) STA. 17+59 TO STA. 19+00 (-L-) - RIGHT
FROM (-L-) STA. 19+50 TO STA. 20+50 (-L-) - LEFT



FROM (-L-) STA. 16+84 TO STA. 17+36 - LEFT
FROM (-L-) STA. 17+19 TO STA. 17+59 - RIGHT



Type of Liner CL II Rip-Rap w/ Geotextile Fabric
(-L-) STA. 16+74 - RIGHT
(-L-) STA. 17+19 - RIGHT

5/14/99
29-SEP-2015 09:53
R:\Environment\B5404_EC_PSH_04.dgn
A:\BEN\275333