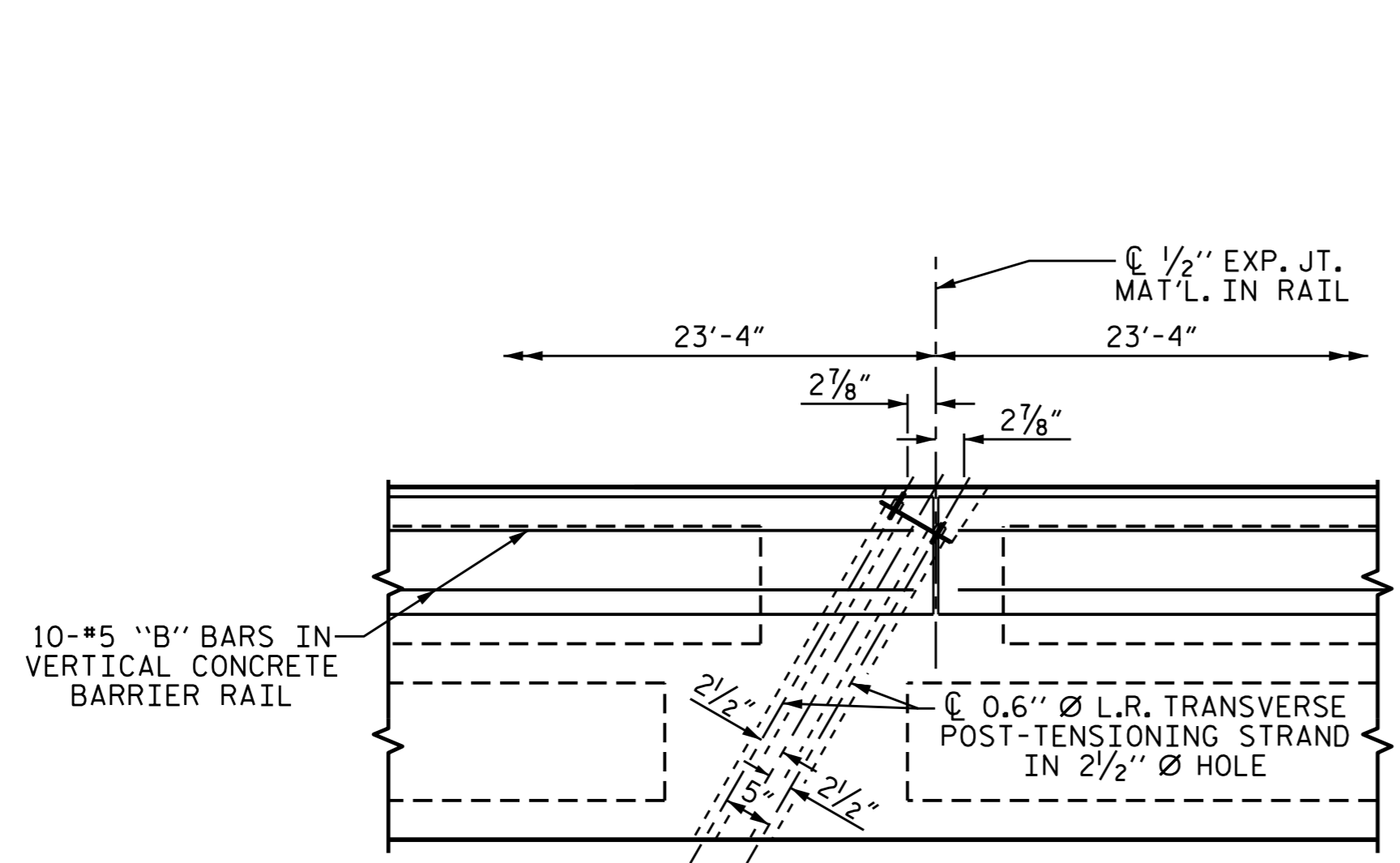
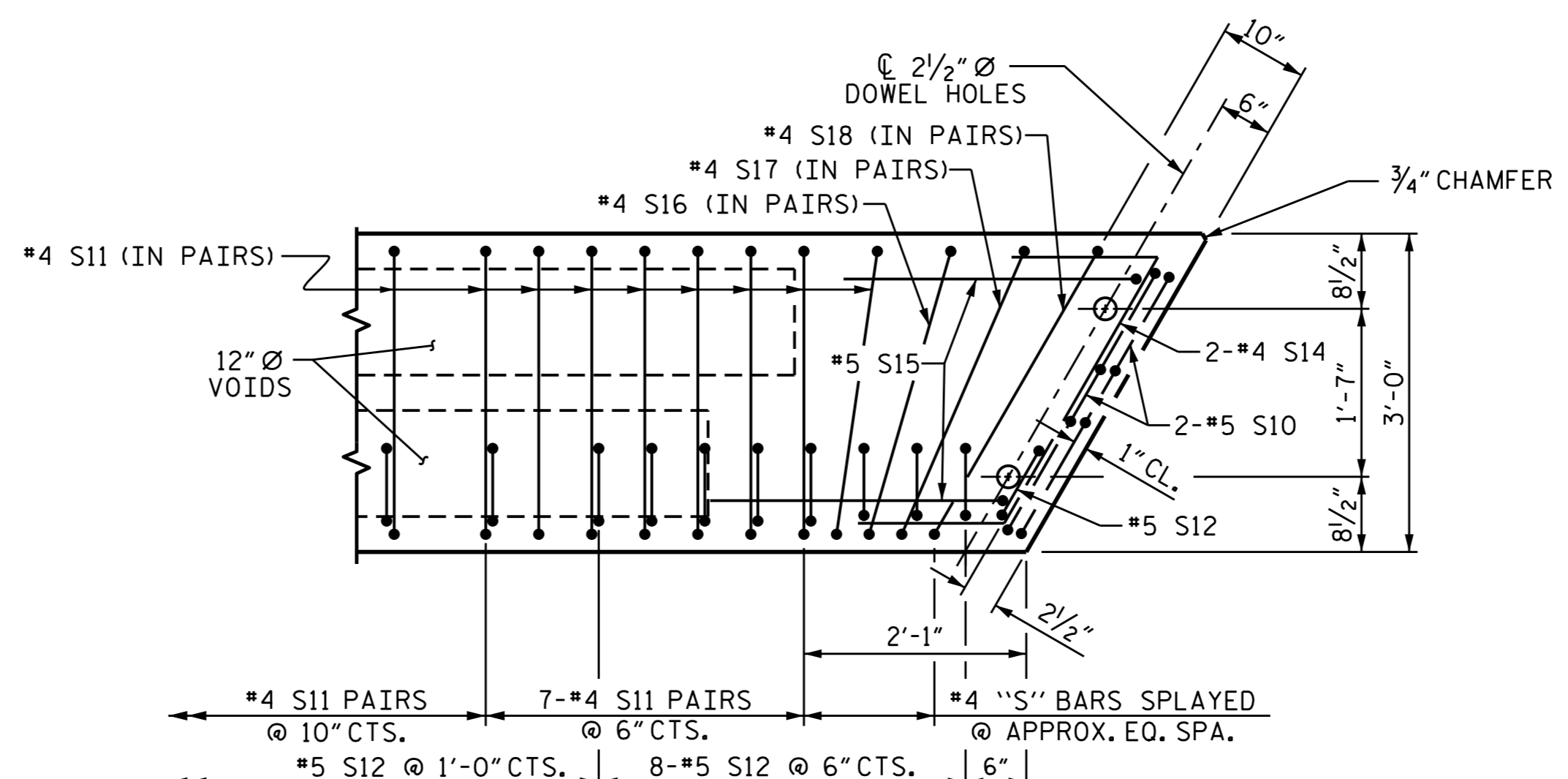


PLAN OF UNIT



DETAIL "B"

#4 S11 BARS MAY BE SHIFTED AS NECESSARY TO MAINTAIN 1" CLEAR TO GROUDED RECESS AND 2 1/2" Ø TRANSVERSE POST-TENSIONING STRAND HOLES

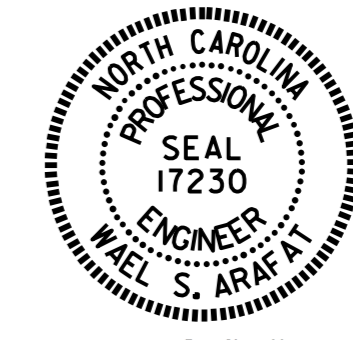


DETAIL "A"

(SIMILAR EACH END OF UNIT)  
NOTE: EXTERIOR UNIT SHOWN - INTERIOR UNIT SIMILAR EXCEPT OMIT #5 S12 BARS.

ASSEMBLED BY :	H. T. BARBOUR	DATE :	4-14-15
CHECKED BY :	V. X. NGUYEN	DATE :	6-15
DRAWN BY :	MAA	6/10	MAA/AAC
CHECKED BY :	MKT	7/10	MAA/TMG

18-NOV-2015 09:09  
Y:\Structures\FinalPlans\B5404.SD.TS.dgn  
warafat



PROJECT NO. B-5404  
JACKSON COUNTY  
STATION: 17+20.00-L-

SHEET 2 OF 3

STATE OF NORTH CAROLINA DEPARTMENT OF TRANSPORTATION RALEIGH						SHEET NO. S-6
PLAN OF 70' UNIT 27'-10" CLEAR ROADWAY 120° SKEW						TOTAL SHEETS 14
REVISIONS						
NO.	BY:	DATE:	NO.	BY:	DATE:	
1			3			
2			4			

STD. NO. 24PCS\_30\_120S\_70L