

**CONTRACT: C203671 TIP NO: B-5404**

STATE OF NORTH CAROLINA

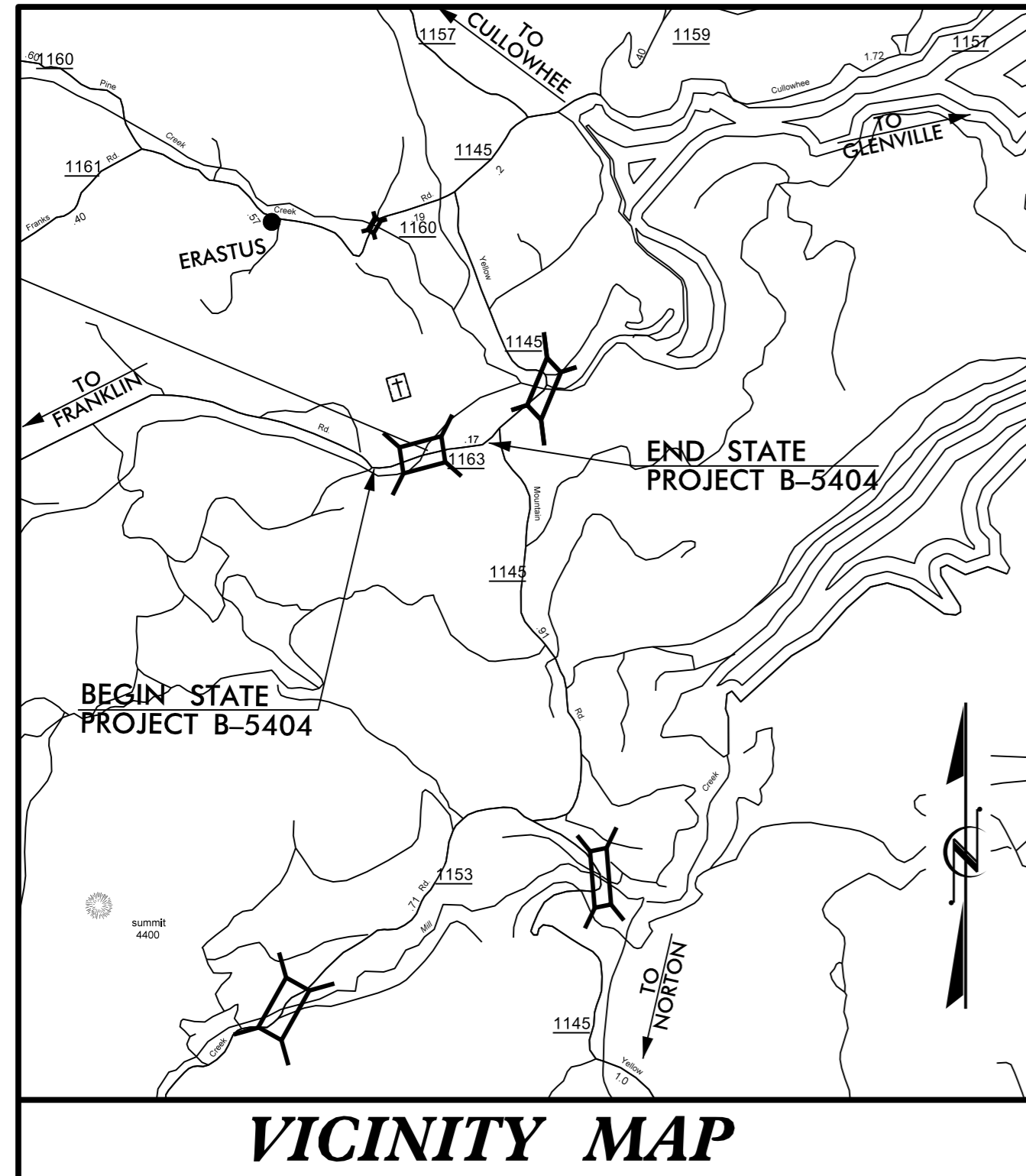
DIVISION OF HIGHWAYS

**JACKSON COUNTY**

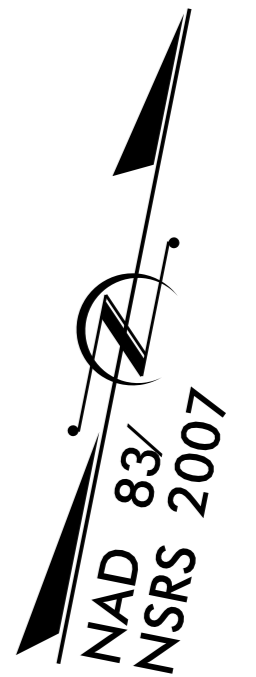
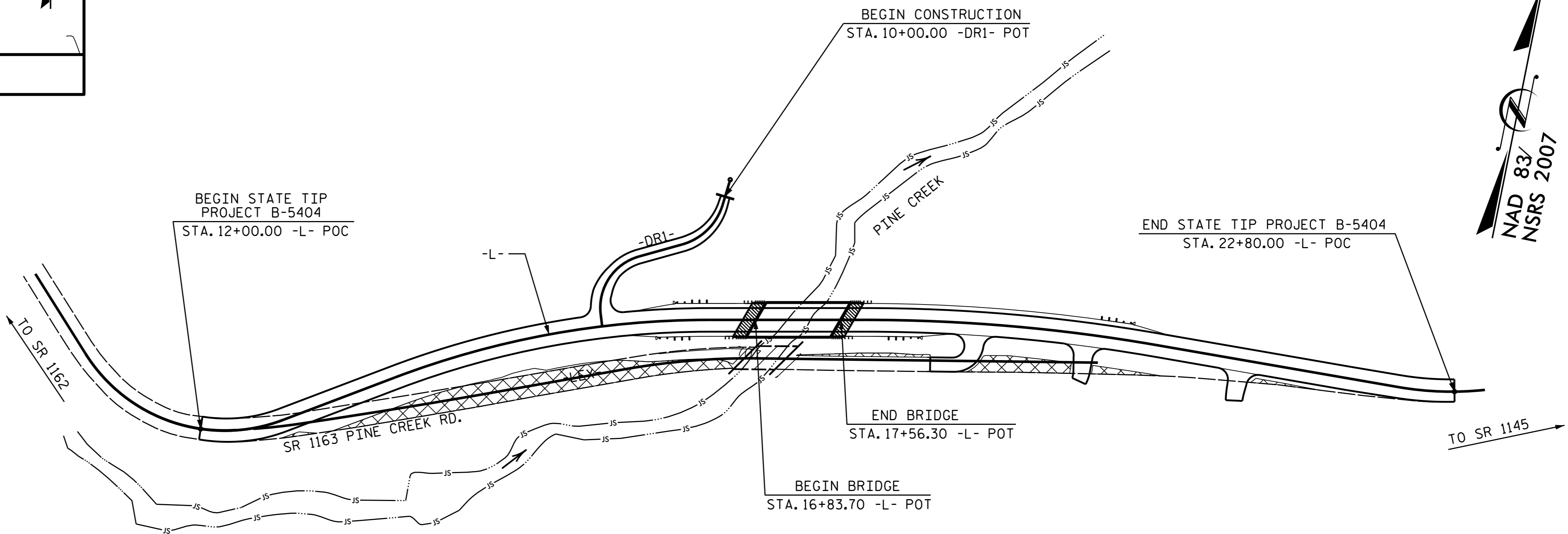
**LOCATION: BRIDGE NO. 136 OVER PINE CREEK  
ON SR 1163 (PINE CREEK ROAD)**

**TYPE OF WORK: GRADING, PAVING, DRAINAGE, AND STRUCTURE**

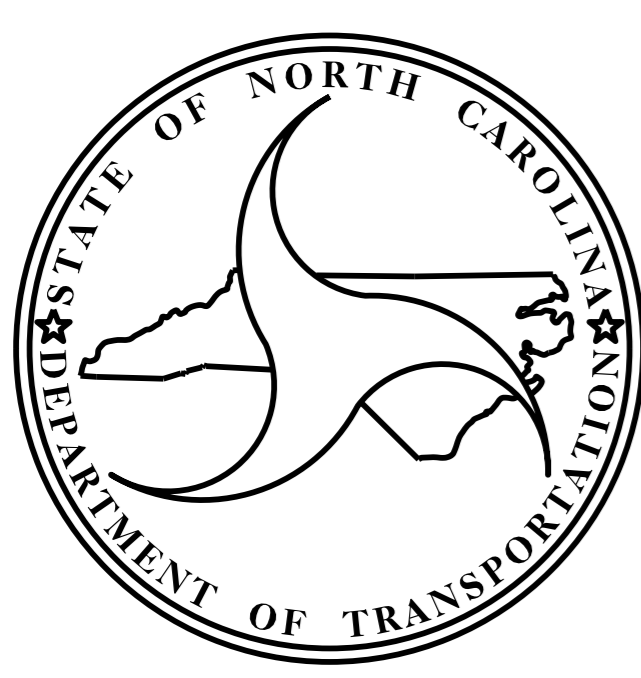
STATE	STATE PROJECT REFERENCE NO.	SHEET NO.	TOTAL SHEETS
N.C.	B-5404		
STATE PROJ. NO.	F.A. PROJ. NO.	DESCRIPTION	
46119.1.1	BRZ-1163 (10)	P.E.	
46119.2.FD1	BRZ-1163 (10)	ROW, UTIL	
46119.3.FD1	BRZ-1163 (10)	CONST.	



**VICINITY MAP**



**STRUCTURE**



**DESIGN DATA**

ADT 2016 =	1,020
ADT 2036 =	1,500
K =	12 %
D =	70 %
T =	7 % *
V =	40 MPH
* TTST = 1% DUAL 6%	
FUNC CLASS = RURAL LOCAL	
SUB REGIONAL TIER	

**PROJECT LENGTH**

LENGTH ROADWAY F.A. PROJECT B-5404 =	0.191 MILES
LENGTH STRUCTURE F.A. PROJECT B-5404 =	0.014 MILES
TOTAL LENGTH F.A. PROJECT B-5404 =	0.205 MILES

Prepared in the Office of:  
**DIVISION OF HIGHWAYS**  
STRUCTURES MANAGEMENT UNIT  
1000 BIRCH RIDGE DR.  
RALEIGH, N.C. 27610

---

2012 STANDARD SPECIFICATIONS

**LETTING DATE : JANUARY 19, 2016**

**D. R. CALHOUN, P.E.**  
PROJECT ENGINEER

**W. S. ARAFAT, P.E.**  
PROJECT DESIGN ENGINEER