

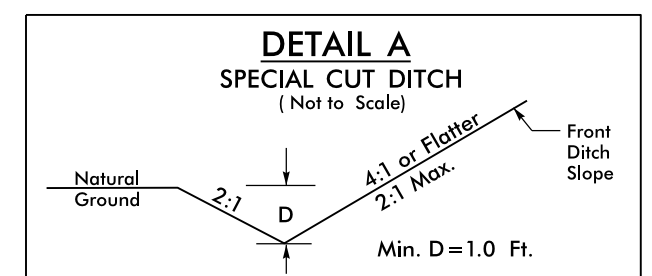
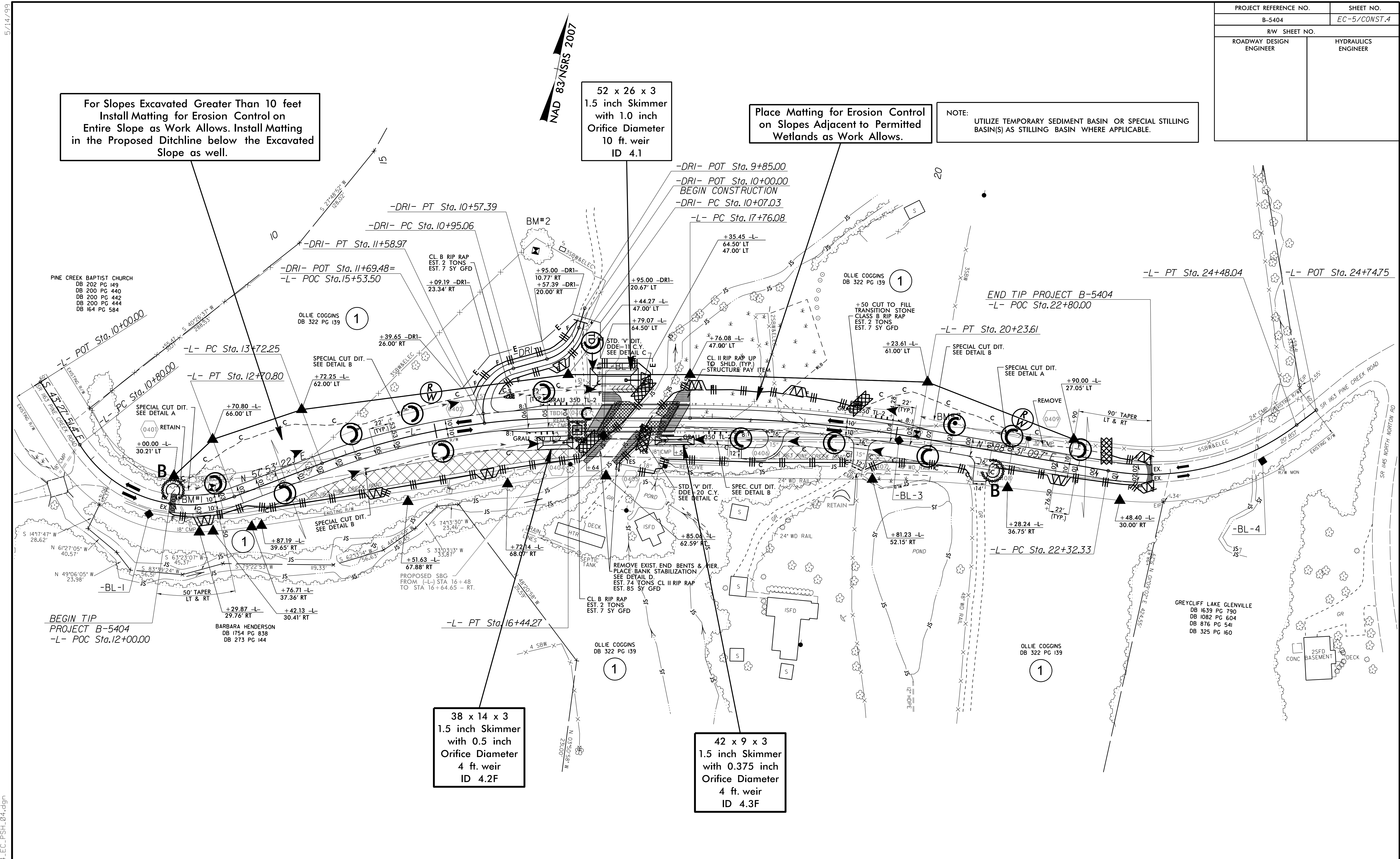
| | |
|-------------------------|---------------------|
| PROJECT REFERENCE NO. | SHEET NO. |
| B-5404 | EC-5/CONST.4 |
| RW SHEET NO. | |
| ROADWAY DESIGN ENGINEER | HYDRAULICS ENGINEER |

For Slopes Excavated Greater Than 10 feet
Install Matting for Erosion Control on
Entire Slope as Work Allows. Install Matting
in the Proposed Ditchline below the Excavated
Slope as well.

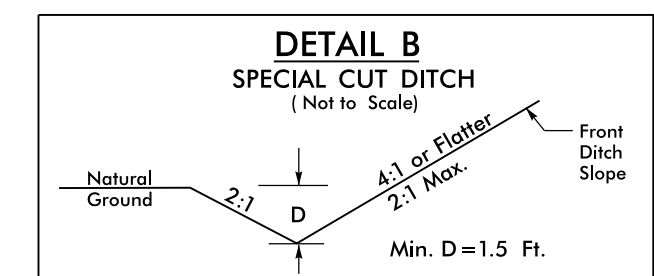
52 x 26 x 3
1.5 inch Skimmer
with 1.0 inch
Orifice Diameter
10 ft. weir
ID 4.1

Place Matting for Erosion Control
on Slopes Adjacent to Permitted
Wetlands as Work Allows.

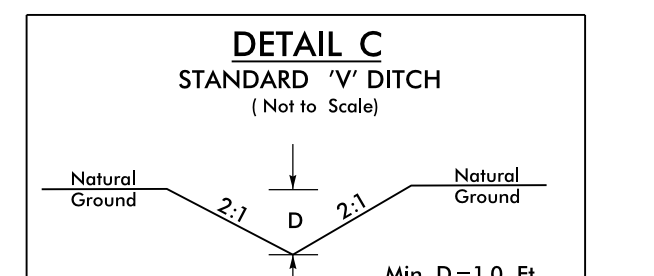
NOTE:
UTILIZE TEMPORARY SEDIMENT BASIN OR SPECIAL STILLING
BASIN(S) AS STILLING BASIN WHERE APPLICABLE.



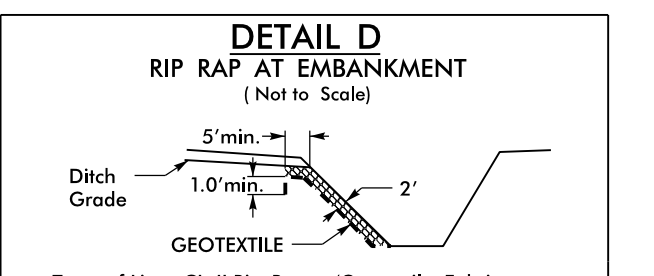
TRANSITION DITCH
FROM (-L-) STA. 12+10 TO STA. 12+50 - LEFT
FROM (-L-) STA. 21+00 TO STA. 21+50 - LEFT



FROM (-L-) STA. 14+00 TO STA. 16+84 - LEFT
FROM (-L-) STA. 14+00 TO STA. 16+74 (-L-) - RIGHT
FROM (-L-) STA. 17+59 TO STA. 19+00 (-L-) - RIGHT
FROM (-L-) STA. 19+50 TO STA. 20+50 (-L-) - LEFT



FROM (-L-) STA. 16+84 TO STA. 17+36 - LEFT
FROM (-L-) STA. 17+19 TO STA. 17+59 - RIGHT



Type of Liner CL II Rip-Rap w/ Geotextile Fabric
(-L-) STA. 16+74 - RIGHT
(-L-) STA. 17+19 - RIGHT

5/14/99
29-SEP-2015 09:53
R:\Environment\B5404_EC_PSH_04.dgn
A:\BENNY\275333