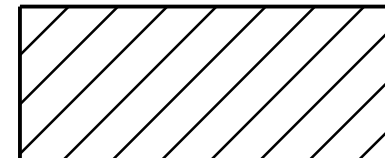


5/14/99
 29-SEP-2015 09:52
 R:\Environment\B5404_EC_PSH_04.dgn
 AT:BNV75333



ENVIRONMENTALLY SENSITIVE AREA
SEE PROJECT SPECIAL PROVISIONS

NAD 83 NSRS 2007

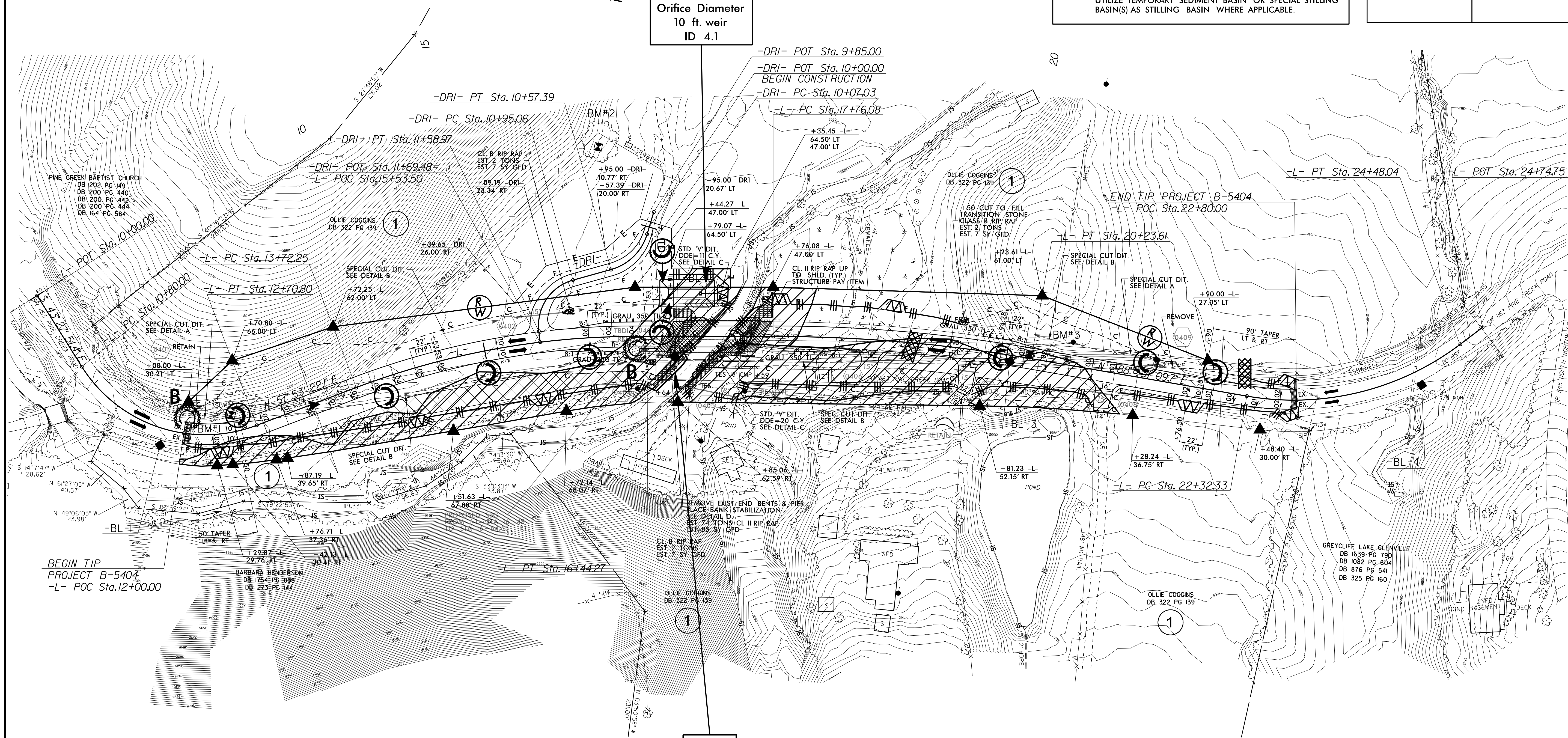
52 x 26 x 3
1.5 inch Skimmer
with 1.0 inch
Orifice Diameter
10 ft. weir
ID 4.1

CLEARING AND GRUBBING
EROSION CONTROL FOR
CONSTRUCTION SHEET 4

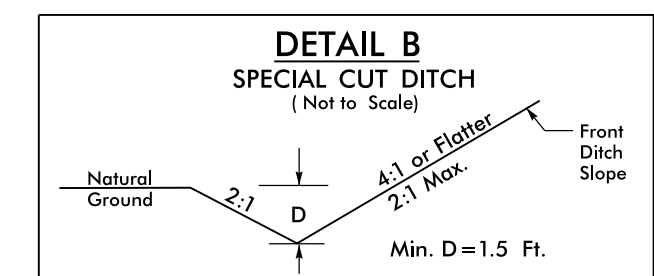
PROJECT REFERENCE NO.	SHEET NO.
B-5404	EC-4/CONST.4
RW SHEET NO.	
ROADWAY DESIGN ENGINEER	HYDRAULICS ENGINEER

NOTE:
PLACE TEMPORARY ROCK SEDIMENT DAMS TYPE - B AND TEMPORARY ROCK SILT CHECKS TYPE - A AT DRAINAGE OUTLETS.

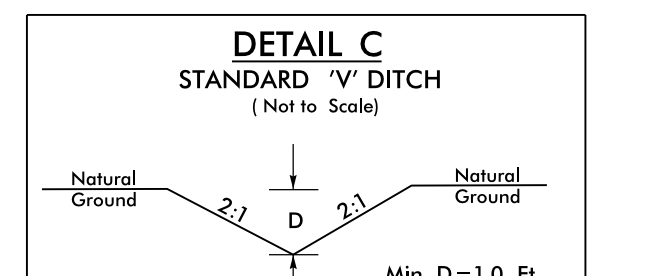
NOTE:
UTILIZE TEMPORARY SEDIMENT BASIN OR SPECIAL STILLING BASIN(S) AS STILLING BASIN WHERE APPLICABLE.



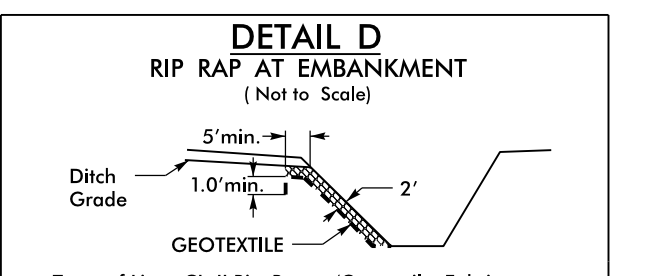
TRANSITION DITCH
FROM (-L-) STA. 12+10 TO STA. 12+50 - LEFT
FROM (-L-) STA. 21+00 TO STA. 21+50 - LEFT



FROM (-L-) STA. 14+00 TO STA. 16+84 - LEFT
FROM (-L-) STA. 14+00 TO STA. 16+74 (-L-) - RIGHT
FROM (-L-) STA. 17+59 TO STA. 19+00 (-L-) - RIGHT
FROM (-L-) STA. 19+50 TO STA. 20+50 (-L-) - LEFT



FROM (-L-) STA. 16+84 TO STA. 17+36 - LEFT
FROM (-L-) STA. 17+19 TO STA. 17+59 - RIGHT



Type of Liner CL II Rip-Rap w/ Coastville Fabric
(-L-) STA. 16+74 - RIGHT
(-L-) STA. 17+19 - RIGHT

29-SEP-2015 09:52
 R:\Environment\B5404_EC_PSH_04.dgn
 AT:BNV75333