

- NOTE:** INSTALL EROSION CONTROL MATTING ON ALL SLOPES 2:1 OR STEEPER
- NOTE:** CONTRACTOR SHALL PROVIDE INLET PROTECTION FOR PARTIALLY INSTALLED STORM DRAIN. THIS MEASURE SHOULD BE INSTALLED AT THE END OF EACH WORKING DAY.
- NOTE:** CONTRACTOR SHALL MAINTAIN ALL DEVICES AS PROJECT IS BROUGHT UP TO GRADE.
- NOTE:** CONTRACTOR SHALL PROVIDE GROUND COVER ON EXPOSED SLOPES WITHIN 7 CALENDAR DAYS, AFTER ANY PHASE OF GRADING.
- NOTE:** ALL EROSION CONTROL DEVICES SHOWN ARE LOCATED WITHIN EXISTING RW OR EASEMENT
- NOTE:** INSTALL MATTING FOR EROSION CONTROL IN PROPOSED DITCH LINES EXCEPT WHERE PERMANENT LINERS ARE SPECIFIED ON THE PLANS OR DIRECTED OTHERWISE BY THE ENGINEER.
- FINAL EROSION CONTROL FOR CONSTRUCTION SHEET 5**

UTILIZE BERM DITCH AS CLEAN WATER DIVERSION DITCH UNTIL ROADWAY CUT SLOPES ARE STABILIZED

64 x 32 x 3
ID 13.1

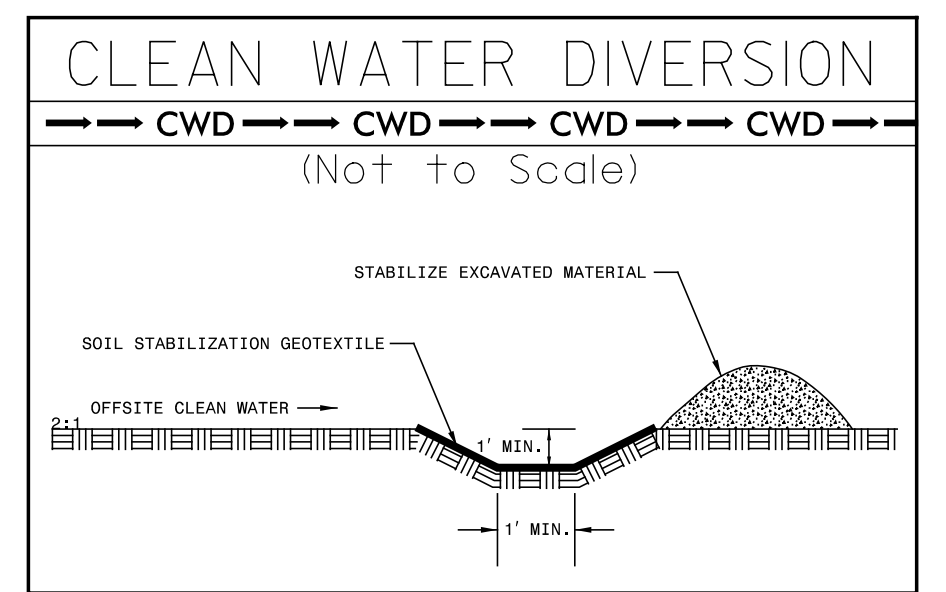
50 x 25 x 3
ID 13.2

32 x 16 x 3
ID 13.3

-L-
PI Sta 41+56.64
Δ = 152° 04' 39.7" (RT)
D = 12' 43' 56.6"
L = 1,194.42'
T = 1,810.08'
R = 450.00'
SE = 0.08
DS = 40 MPH

STATE OF NORTH CAROLINA
DB 267 PG 838
DB385 PG 390
DB 404 PG 271
FILE 10 SLIDE 934

SHOWN AS N.C. DIVISION OF PARKS AND RECREATION
TRACT NO. 18 OF
GORGES STATE PARK
ON A SURVEY BY E. ROGER RAXTER, PLS. RECORDED IN
TRANSYLVANIA REGISTER OF 17



FOR -L- PROFILE SEE SHEET 11

REVISIONS

10/1/2015
R:\Projects\15\1501\Drawings\1501\1501.dgn
Control\cadd\1501\1501.dgn
Control\cadd\1501\1501.dgn
Control\cadd\1501\1501.dgn