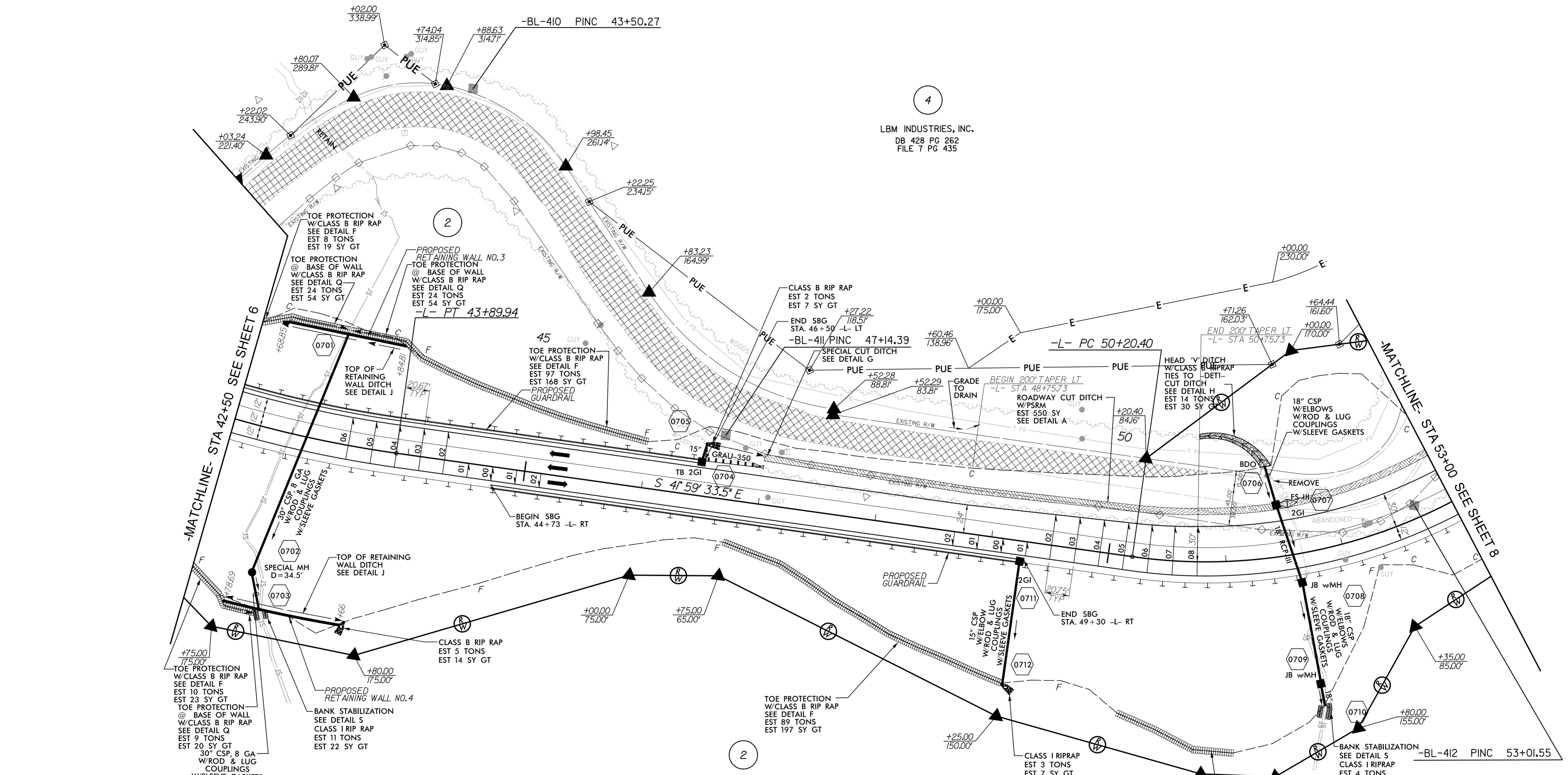
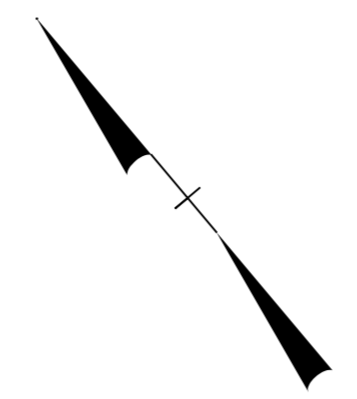


8/17/99



PROJECT REFERENCE NO. R-2409C	SHEET NO. 7
RW SHEET NO.	
ROADWAY DESIGN ENGINEER	HYDRAULICS ENGINEER
DAVID C. WALLER SEAL 22606 NORTH CAROLINA PROFESSIONAL ENGINEER	STACEY H. BAILEY SEAL 24451 NORTH CAROLINA PROFESSIONAL ENGINEER
DocuSigned by: David C. Waller 10/22/2015	DocuSigned by: Stacey H. Bailey 10/23/2015

-L-
 PI Sta 42+47.38
 $\Delta = 16' 27'' 00.6'' (LT)$
 $D = 5' 43'' 46.5''$
 $L = 287.11'$
 $T = 144.55'$
 $R = 1,000.00'$
 $SE = 0.06$
 $DS = 40 \text{ MPH}$

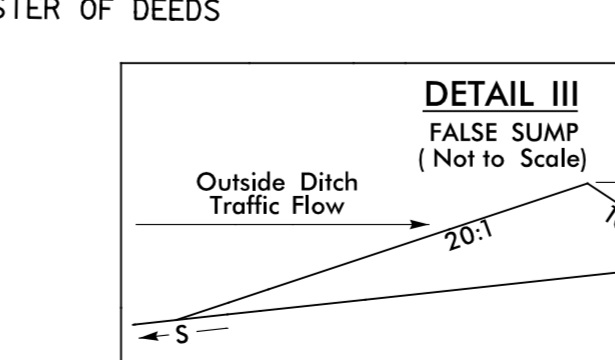
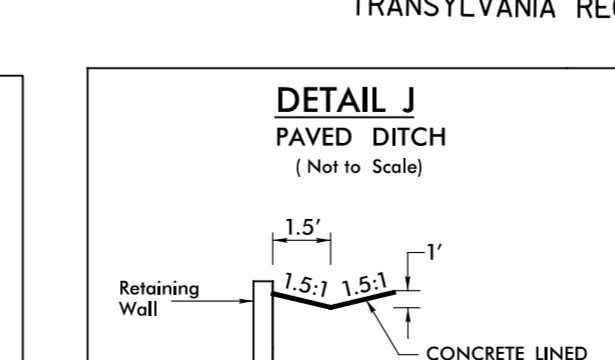
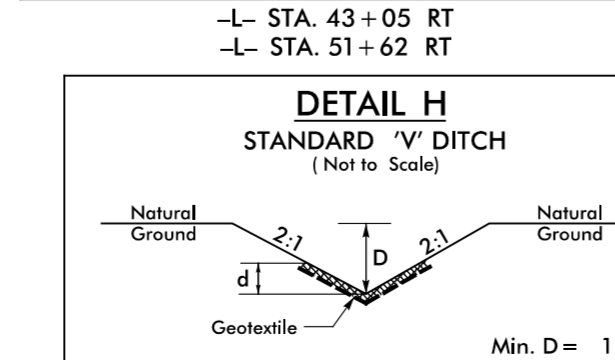
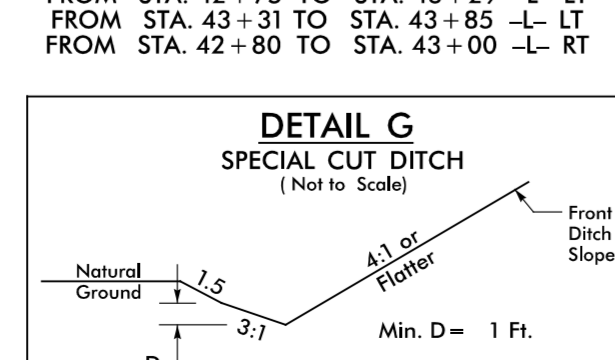
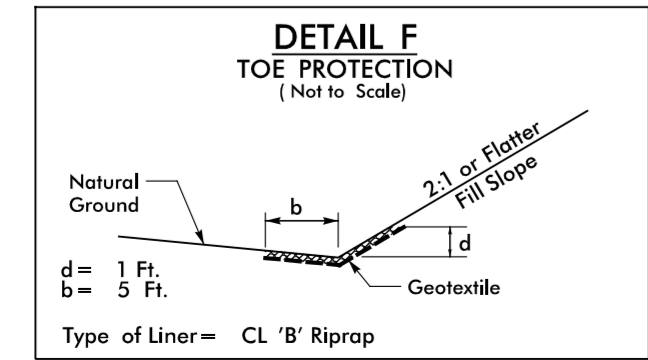
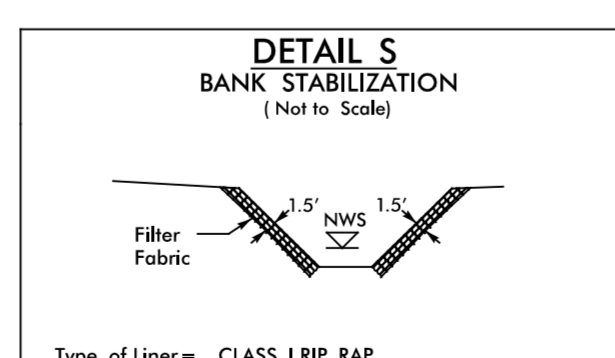
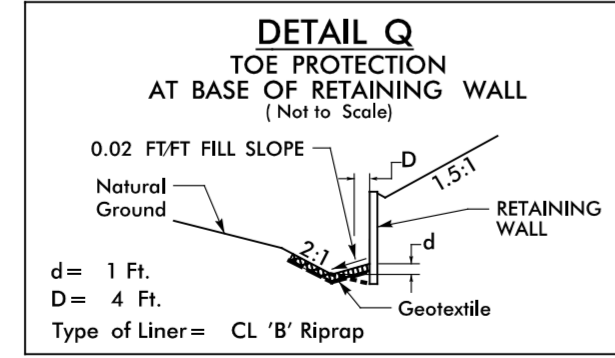
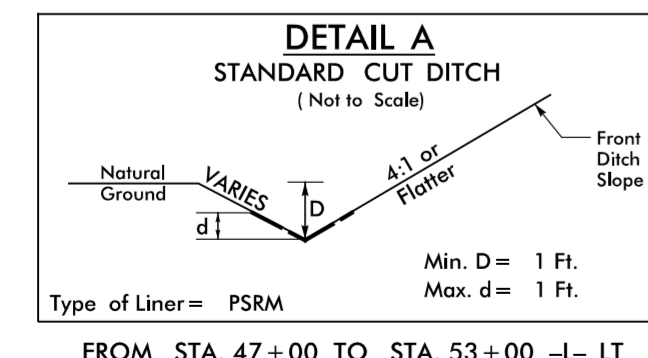


4
 LBM INDUSTRIES, INC.
 DB 428 PG 262
 FILE 7 PG 435

STATE OF NORTH CAROLINA
 DB 267 PG 838
 DB 385 PG 390
 DB 404 PG 271
 FILE 10 SLIDE 934

SHOWN AS N.C. DIVISION OF PARKS AND RECREATION
 TRACT NO. 18 OF
 GORGES STATE PARK
 ON A SURVEY BY E. ROGER RAXTER, PLS RECORDED IN FILE 10, SLIDE 934
 TRANSYLVANIA REGISTER OF DEEDS

-L-
 PI Sta 52+69.61
 $\Delta = 57' 57'' 13.8'' (LT)$
 $D = 12' 43'' 56.6''$
 $L = 455.17'$
 $T = 249.20'$
 $R = 450.00'$
 $SE = 0.08$
 $DS = 40 \text{ MPH}$



FOR -L- PROFILE SEE SHEET 13

01/21/2015 P:\R2409C_Rdu-ps-h_07.dgn
 P:\R2409C_Rdu-ps-h_07.dgn
 P:\R2409C_Rdu-ps-h_07.dgn