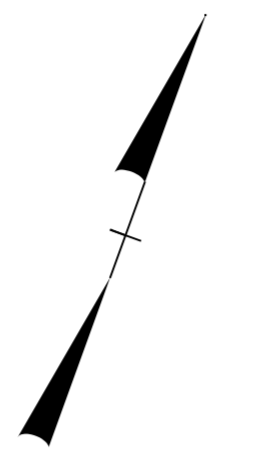
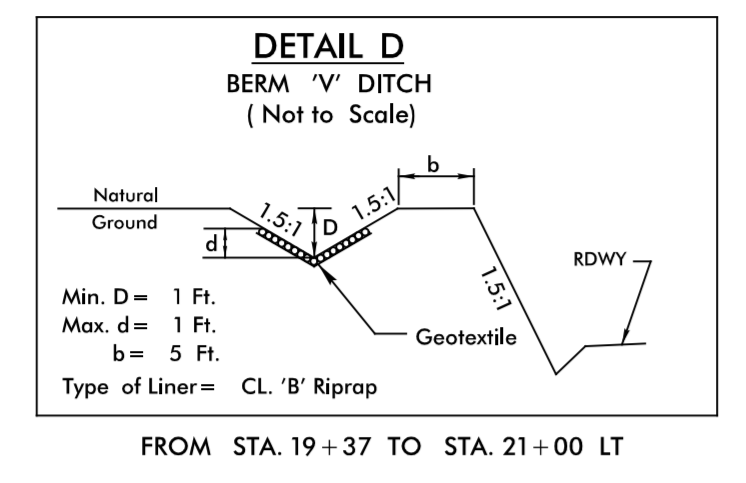
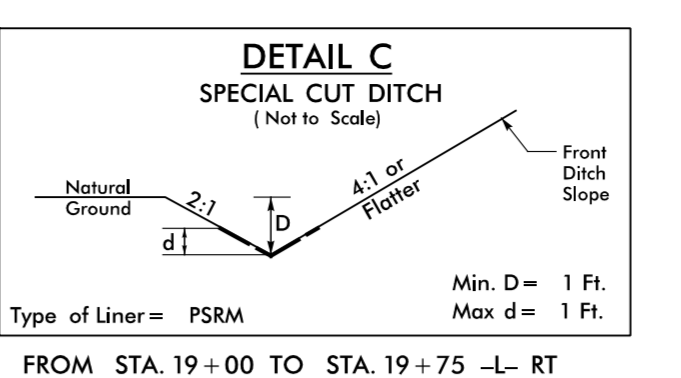
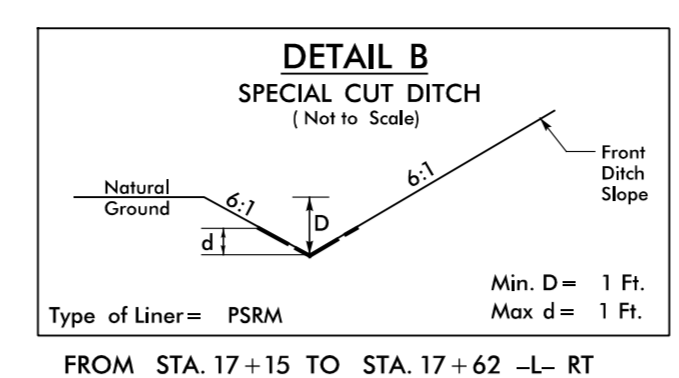
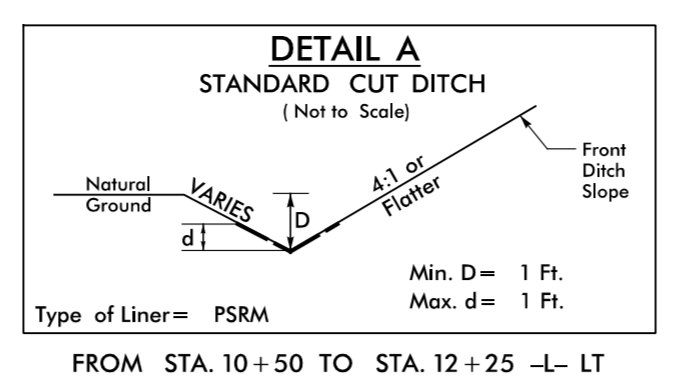
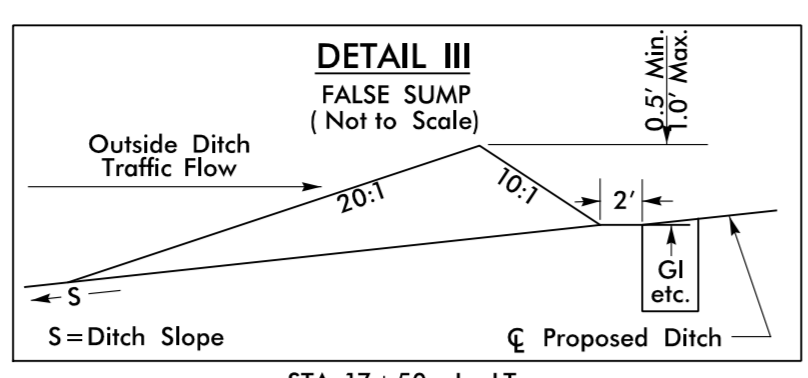
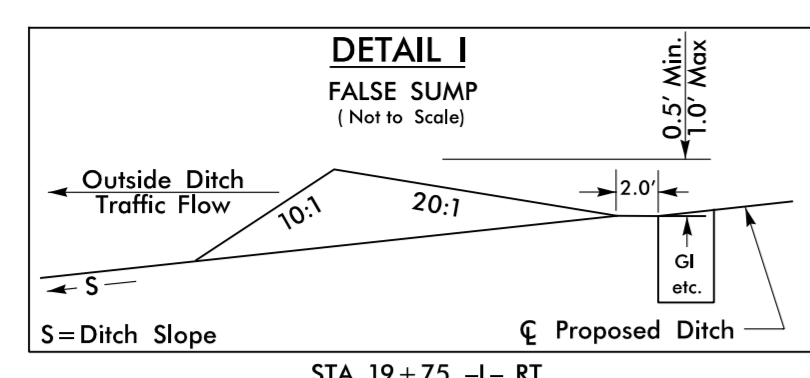


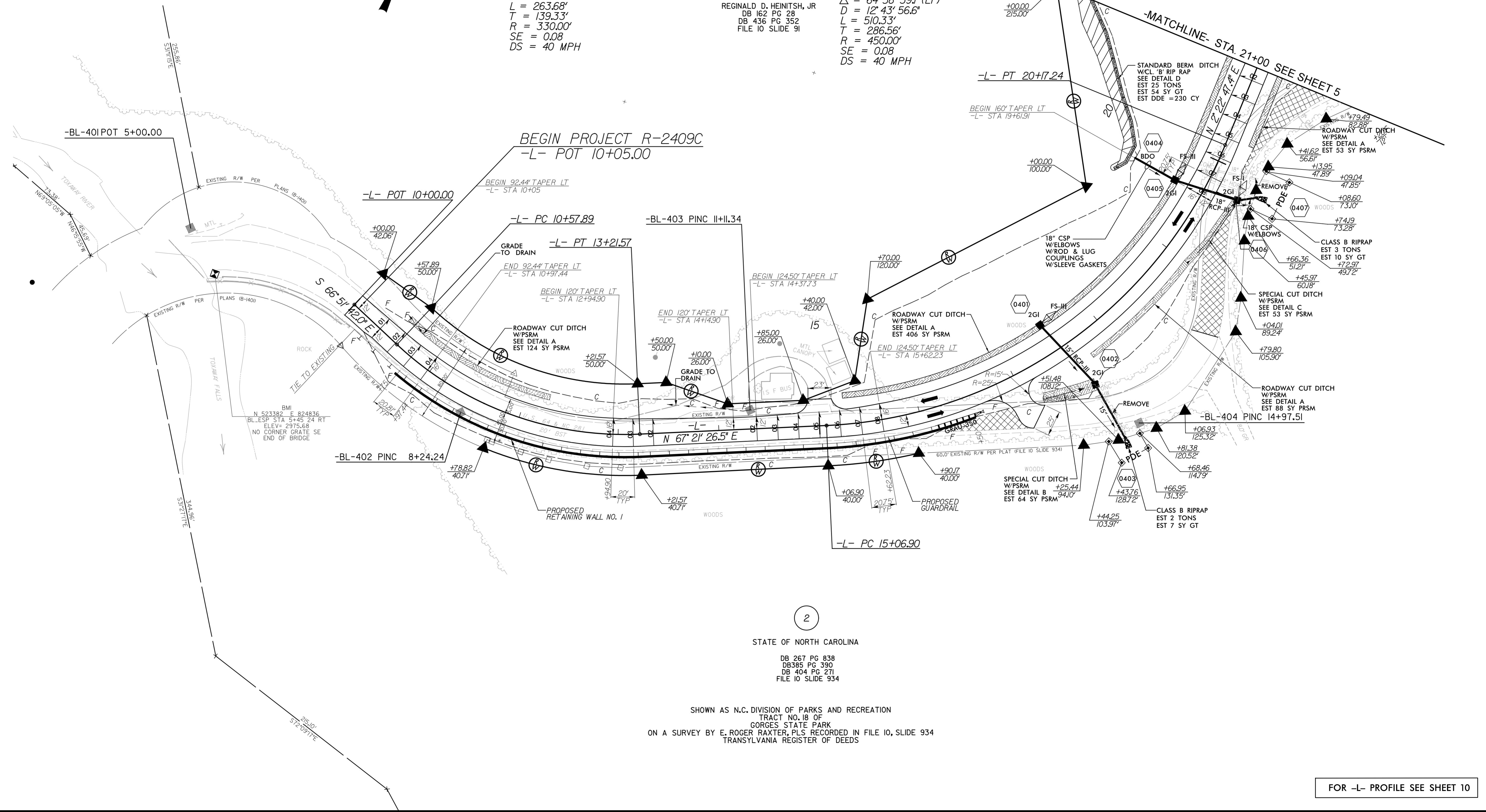
8/17/09



-L-  
 PI Sta 11+97.22  
 $\Delta = 45^\circ 46' 51.5''$  (LT)  
 $D = 17^\circ 21' 44.5''$   
 $L = 263.68'$   
 $T = 139.33'$   
 $R = 330.00'$   
 $SE = 0.08$   
 $DS = 40$  MPH

REGINALD D. HEINTSH, JR  
 DB 162 PG 28  
 DB 436 PG 352  
 FILE 10 SLIDE 91

-L-  
 PI Sta 17+93.46  
 $\Delta = 64^\circ 58' 39.1''$  (LT)  
 $D = 12^\circ 43' 56.6''$   
 $L = 510.33'$   
 $T = 286.56'$   
 $R = 450.00'$   
 $SE = 0.08$   
 $DS = 40$  MPH



2

STATE OF NORTH CAROLINA

DB 267 PG 838  
 DB385 PG 390  
 DB 404 PG 271  
 FILE 10 SLIDE 934

SHOWN AS N.C. DIVISION OF PARKS AND RECREATION  
 TRACT NO. 18 OF  
 GORGES STATE PARK  
 ON A SURVEY BY E. ROGER RAXTER, PLS. RECORDED IN FILE 10, SLIDE 934  
 TRANSYLVANIA REGISTER OF DEEDS

FOR -L- PROFILE SEE SHEET 10



PROJECT REFERENCE NO. R-2409C	SHEET NO. 4
RW SHEET NO.	
ROADWAY DESIGN ENGINEER DAVID C. WALLER SEAL 22606	HYDRAULICS ENGINEER STACEY H. BAILEY SEAL 24451
DocuSigned by: David C. Waller 10/22/2015	DocuSigned by: Stacey H. Bailey 10/23/2015

10/21/2015 P:\R2409C\_Rdu-ps-h\_04.dgn