

8/17/09

-DETOUR 2-

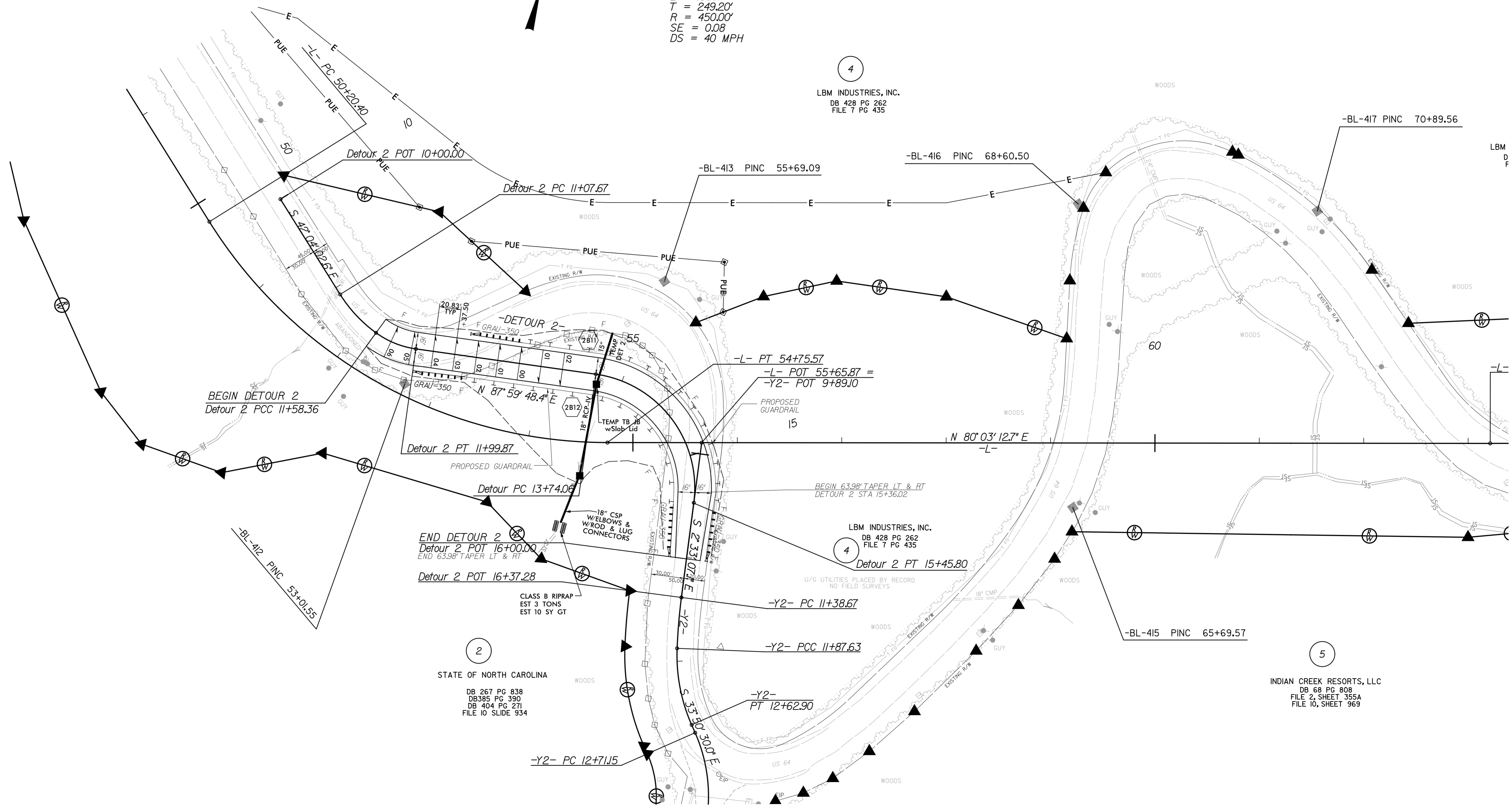
PROJECT REFERENCE NO. R-2409C	SHEET NO. 2B-1
RW SHEET NO.	
ROADWAY DESIGN ENGINEER DAVID C. WALKER NORTH CAROLINA PROFESSIONAL ENGINEER SEAL 22606 10/22/2015	HYDRAULICS ENGINEER STACEY H. BAILEY NORTH CAROLINA PROFESSIONAL ENGINEER SEAL 24451 10/23/2015

Detour 2
 PI Sta 11+33.33
 $\Delta = 27^{\circ} 57' 14.0''$ (LT)
 D = 43' 18" 43.4"
 L = 50.69'
 T = 25.66'
 R = 132.29'

Detour 2
 PI Sta 11+79.54
 $\Delta = 27^{\circ} 58' 54.9''$ (LT)
 D = 67' 24" 24.5"
 L = 41.5'
 T = 21.18'
 R = 85.00'

Detour 2
 PI Sta 14+83.01
 $\Delta = 89^{\circ} 27' 04.5''$ (RT)
 D = 52' 05" 13.5"
 L = 171.73'
 T = 108.95'
 R = 110.00'

-L-
 PI Sta 52+69.61
 $\Delta = 57^{\circ} 57' 13.8''$ (LT)
 D = 12' 43" 56.6"
 L = 455.17'
 T = 249.20'
 R = 450.00'
 SE = 0.08
 DS = 40 MPH



10/21/2015 P:\2409C_Rdwy_DTL_2B-1.dgn