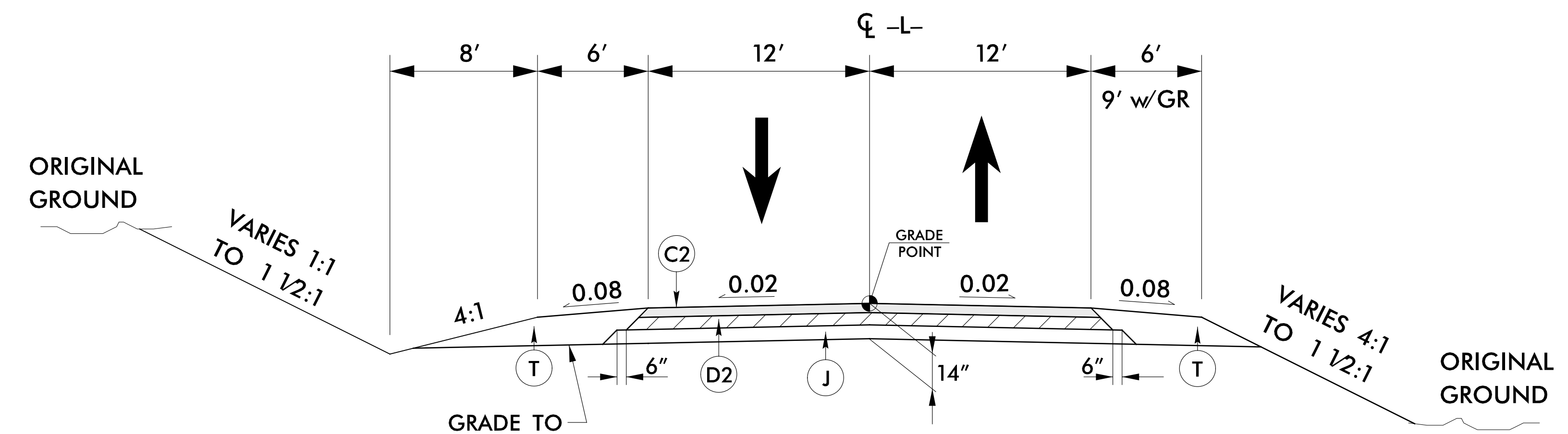


8/17/09

C1	2" S9.5B
C2	3" S9.5B
C3	VAR S9.5B
D1	2 1/2" I19.0B
D2	3" I19.0B
D3	VAR I19.0B
E1	4" B25.0B
E2	VAR B25.0B
J	8" ABC
N	GEOTEXTILE
P	PRIME COAT
T	EARTH MATERIAL
U	EXIST. PAVEMENT
W	VAR WEDGING

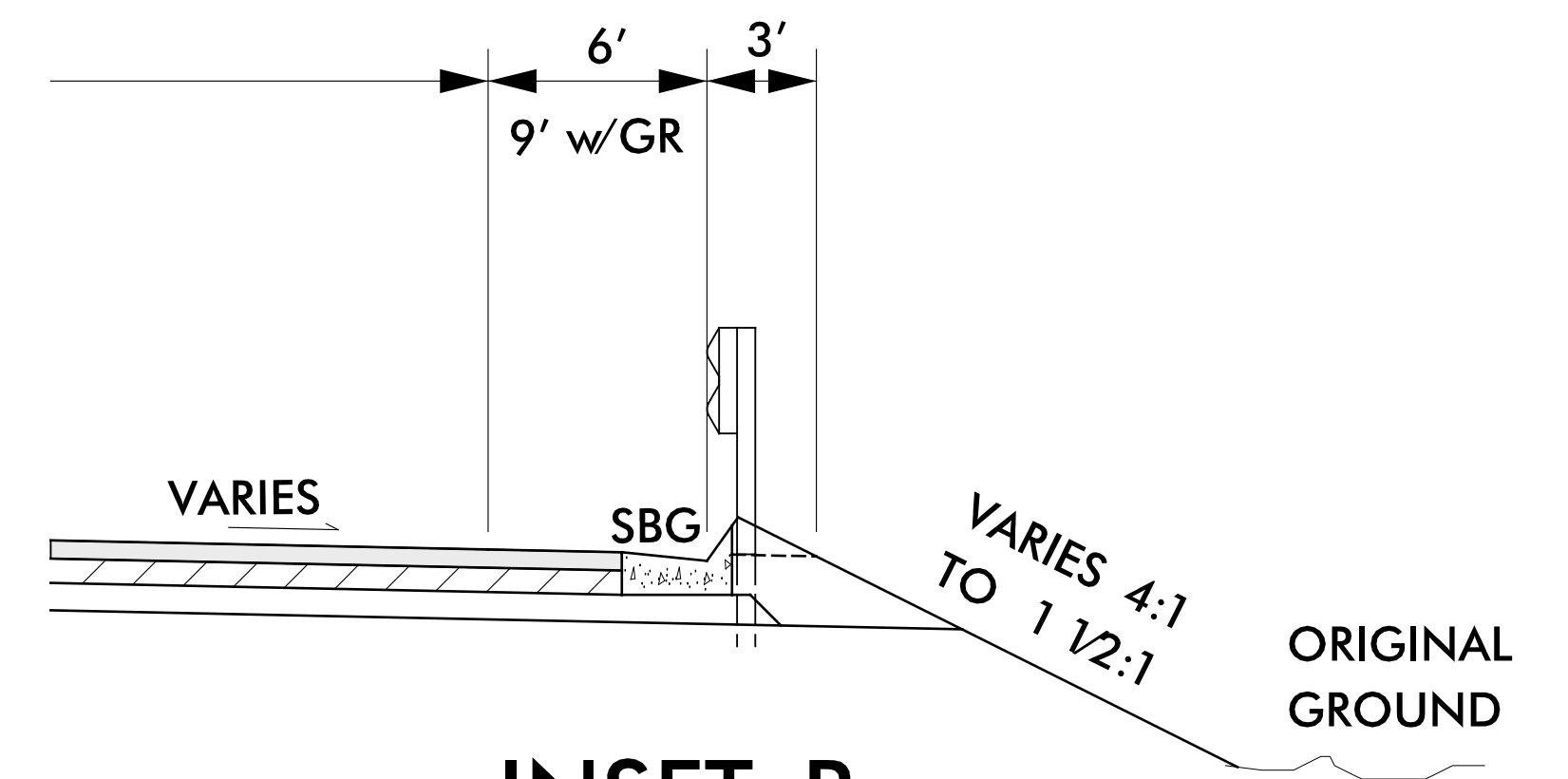


PROJECT REFERENCE NO. R-2409C	SHEET NO. 2A-2
RW SHEET NO.	
ROADWAY DESIGN ENGINEER DAVID C. WALLER SEAL 22606 NORTH CAROLINA PROFESSIONAL ENGINEER	PAVEMENT DESIGN ENGINEER CLARK S. MORRISON SEAL 22896 NORTH CAROLINA PROFESSIONAL ENGINEER
DocuSigned by: David C. Waller 88AD3F7156C5435... 10/22/2015	DocuSigned by: Clark S. Morrison 096238016E4F400... 10/23/2015



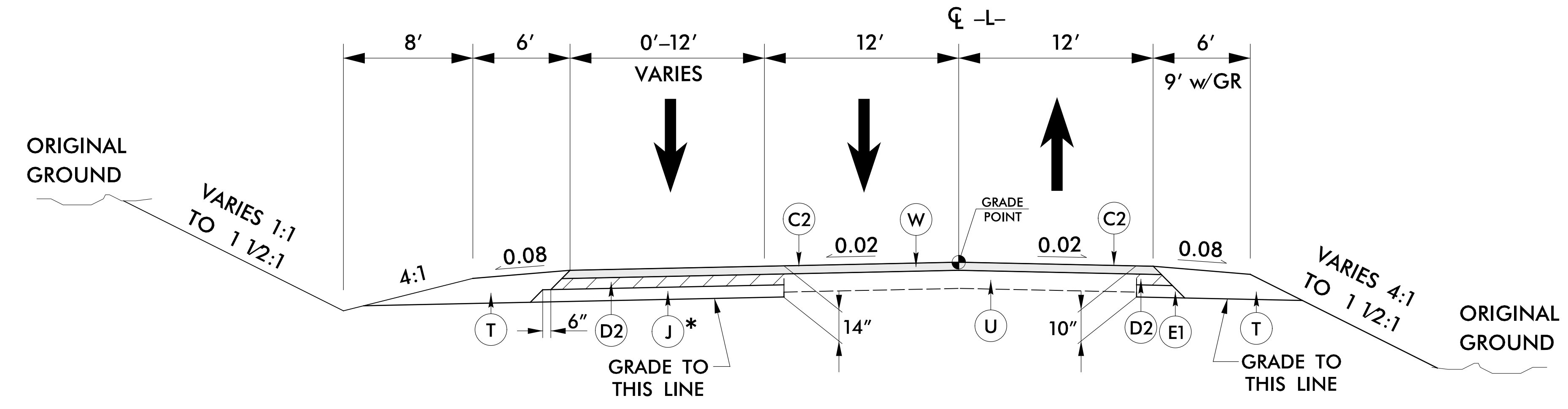
TYPICAL SECTION 2

- L- STA 16+45 TO -L- STA 19+55
- L- STA 20+45 TO -L- STA 27+00
- L- STA 28+45 TO -L- STA 40+75
- L- STA 69+00 TO -L- STA 71+55



INSET B

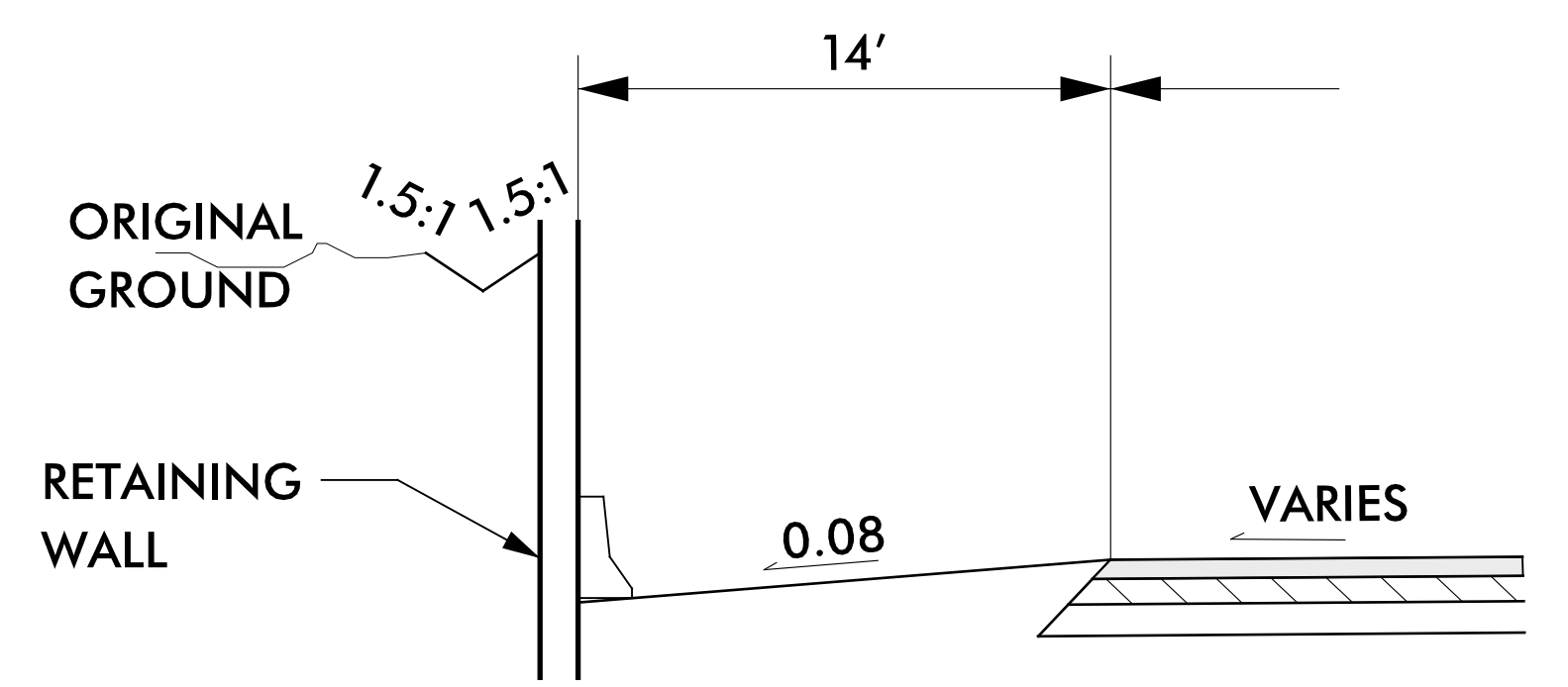
- L- STA 26+50 TO -L- STA 28+50 RT
- L- STA 41+30 TO -L- STA 46+50 LT
- L- STA 44+73 TO -L- STA 49+30 RT
- L- STA 59+60 TO -L- STA 62+85 LT
- L- STA 59+62.50 TO -L- STA 62+85 RT
- L- STA 68+66.61 TO -L- STA 69+05 LT
- L- STA 69+49 TO -L- STA 75+11 RT



TYPICAL SECTION 3

- L- STA 40+75 TO -L- STA 41+15
- L- STA 62+70 TO -L- STA 69+00

* USE E1 FOR WIDENING LESS THAN 6'



INSET C

- L- STA 67+53 TO -L- STA 68+66.61 LT

10/21/2015 P:\Projects\2409C_Rdly_4jpc.dgn