

**This electronic collection of documents is provided
for the convenience of the user
and is Not a Certified Document –**

**The documents contained herein were originally issued
and sealed by the individuals whose names and license
numbers appear on each page, on the dates appearing
with their signature on that page.**

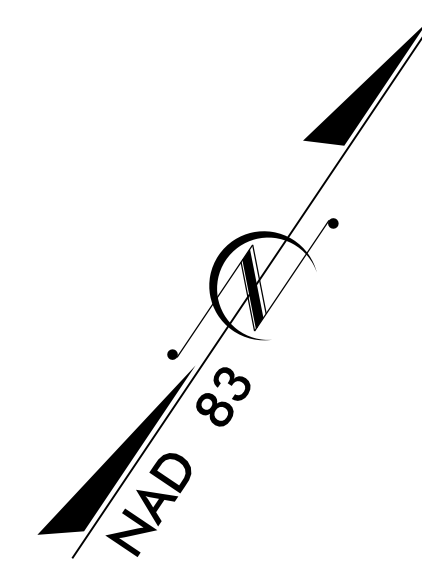
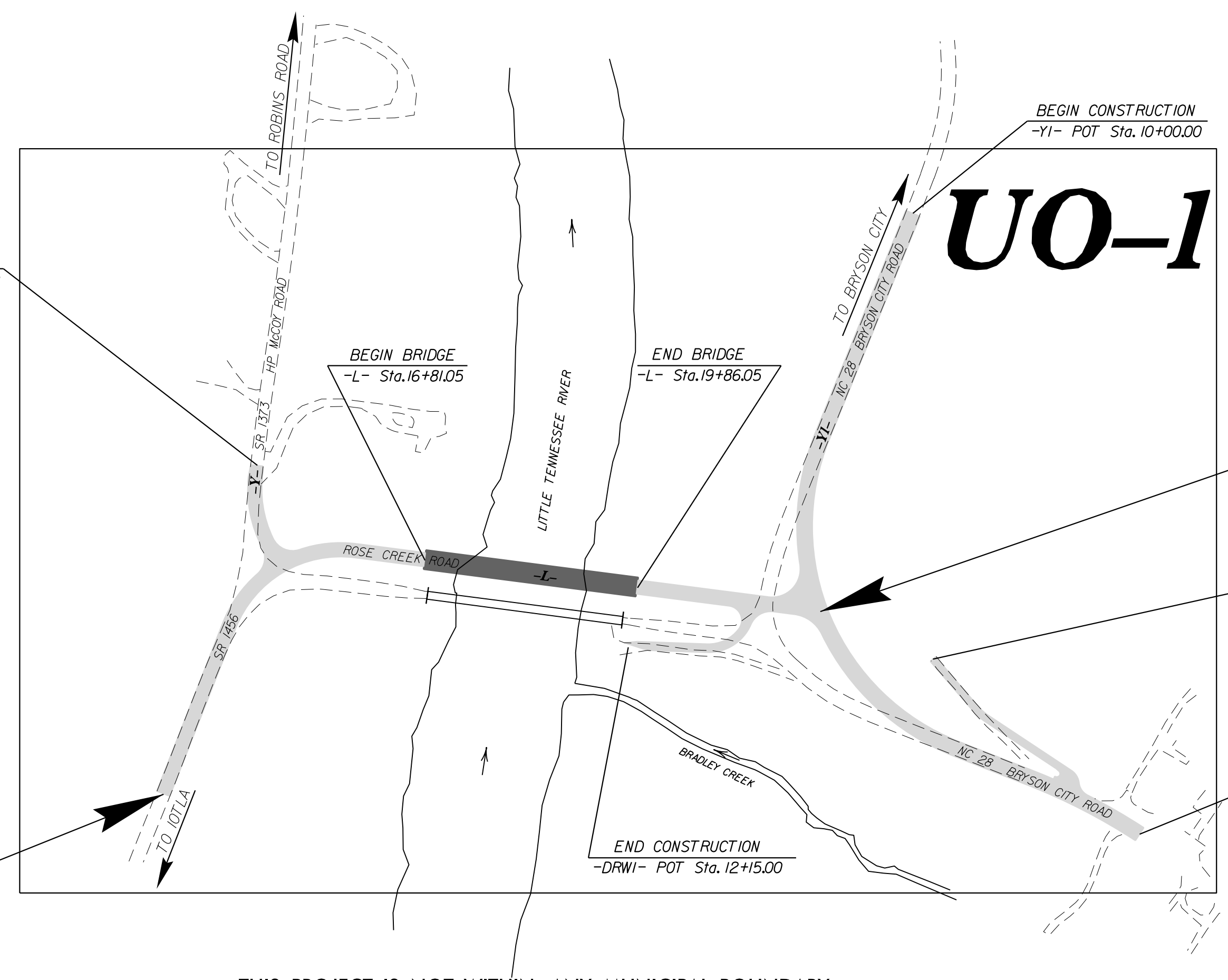
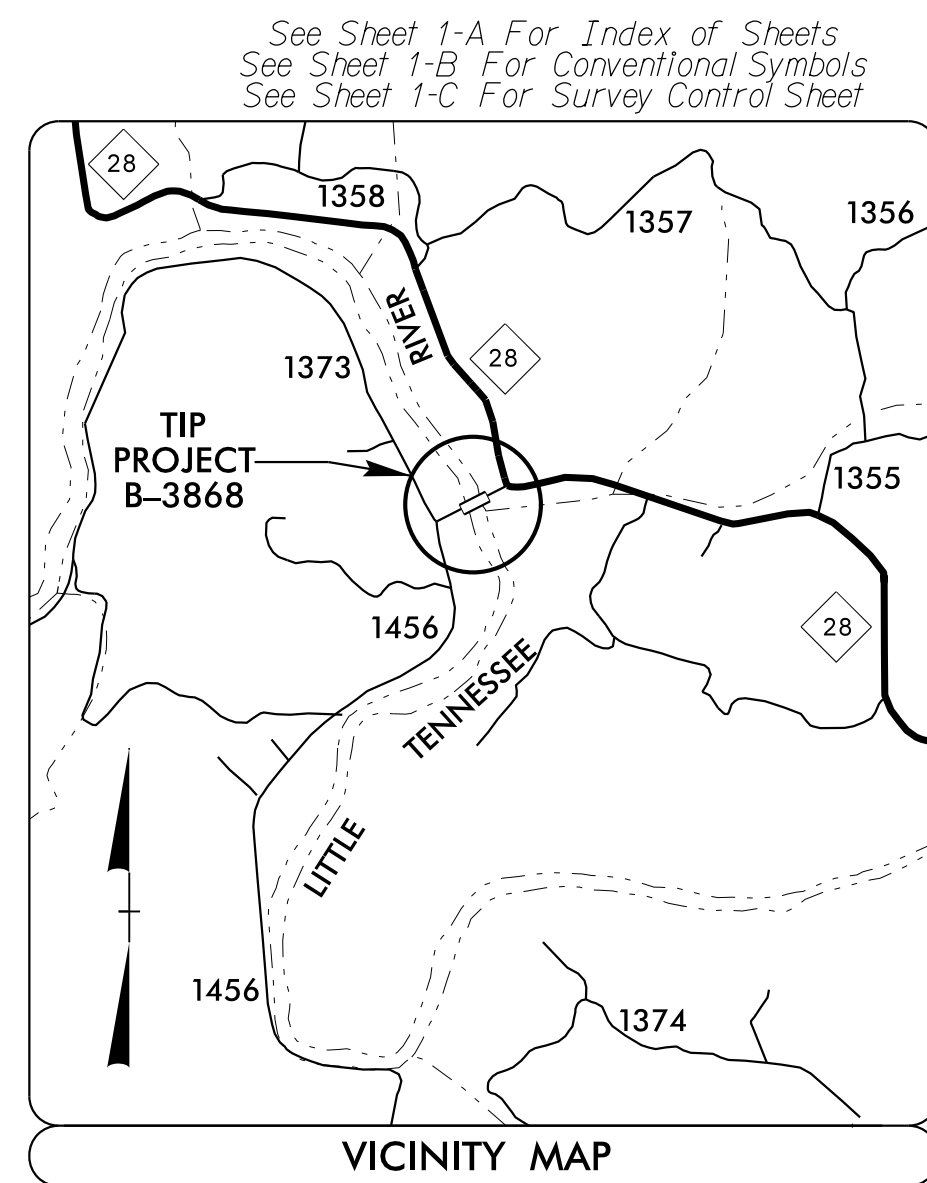
**This file or an individual page
shall not be considered a certified document.**

STATE OF NORTH CAROLINA
DIVISION OF HIGHWAYS

**UTILITIES BY OTHERS PLANS
MACON COUNTY**

LOCATION: BRIDGE NO. 172 OVER LITTLE TENNESSEE RIVER ON SR 1456
TYPE OF WORK: POWER AND TELEPHONE

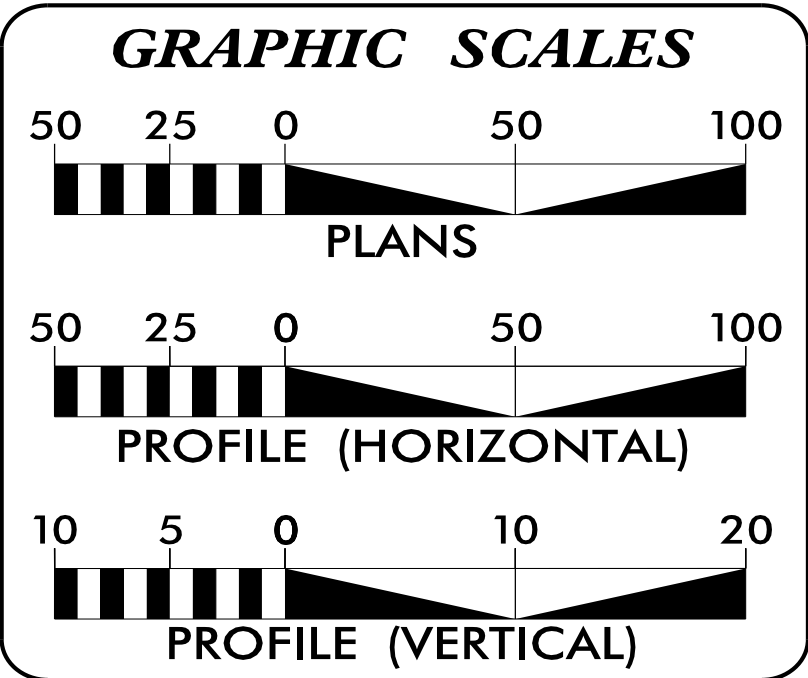
TIP PROJECT: B-3868



END TIP PROJECT B-3868
-L- POT Sta. 22 + 48.22 =
-Y1- POC Sta. 15 + 96.49

BEGIN TIP PROJECT B-3868
-L- POT Sta. 11 + 00.00

THIS PROJECT IS NOT WITHIN ANY MUNICIPAL BOUNDARY

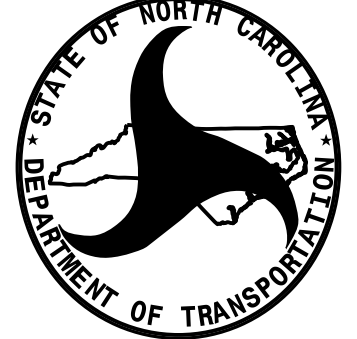


INDEX OF SHEETS

SHEET NO.	DESCRIPTION
UO-1	TITLE SHEET
UO-2	UTILITY BY OTHERS PLAN SHEETS

UTILITY OWNERS ON PROJECT

(A) Duke Energy
(B) Frontier Communication



PREPARED IN THE OFFICE OF:
**DIVISION OF HIGHWAYS
UTILITIES UNIT
UTILITIES ENGINEERING**

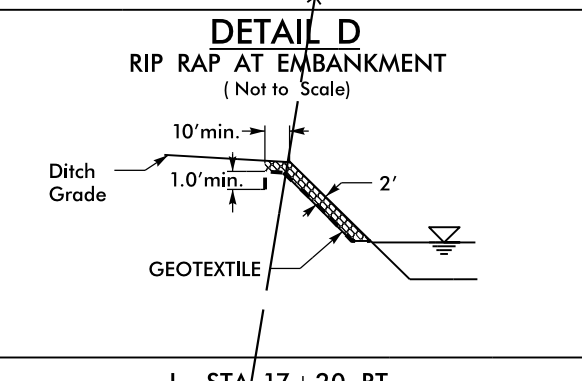
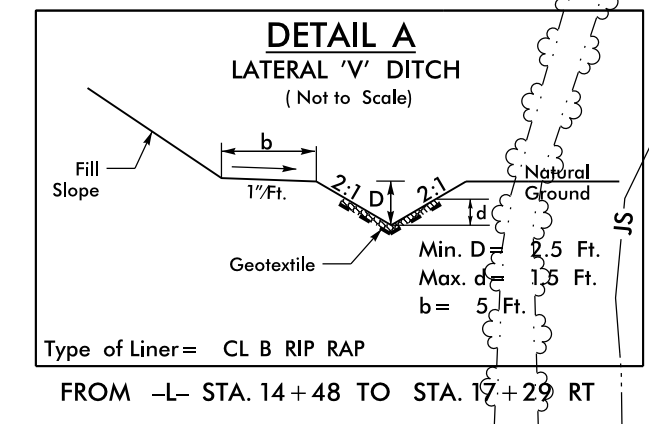
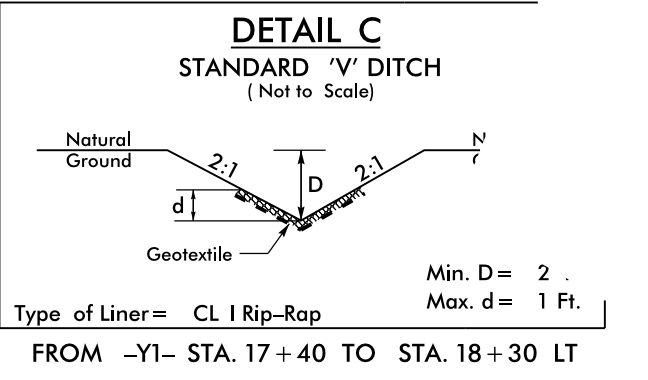
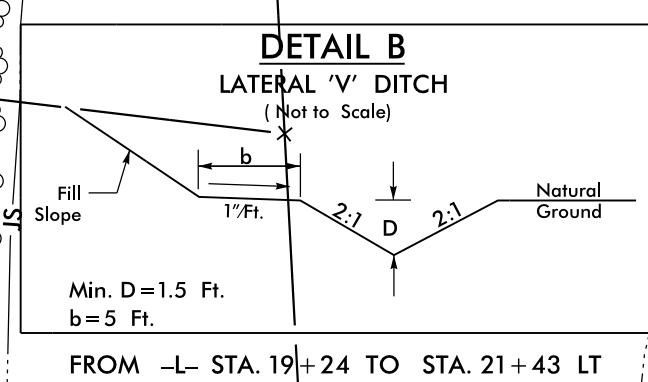
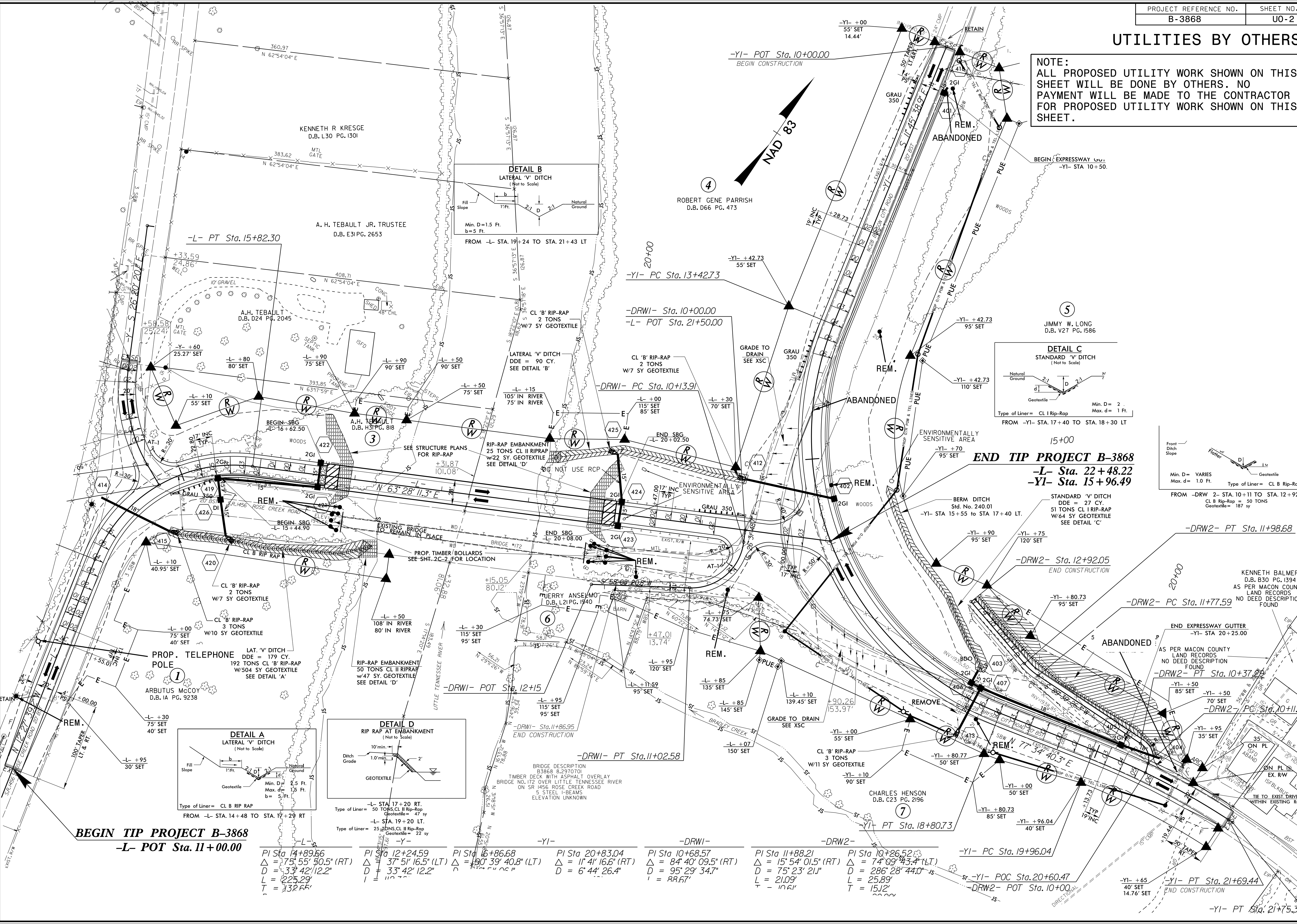
1555 MAIL SERVICES CENTER
RALEIGH, NC 27699-1555
PHONE (919) 707-6690
FAX (919) 250-4151

Roger Worthington, P.E. UTILITIES SECTION ENGINEER
Carl Barclay, P.E. UTILITIES SQUAD LEADER PROJECT ENGINEER
Ali Kouchehi, P.E. UTILITIES PROJECT DESIGNER

08-OCT-2015 15:01 R:\Utilities\Engineering\UC\Proj\B-3868_Rdy_tsh.dgn \$\$\$\$USERNAME\$\$\$

UTILITIES BY OTHERS

NOTE: ALL PROPOSED UTILITY WORK SHOWN ON THIS SHEET WILL BE DONE BY OTHERS. NO PAYMENT WILL BE MADE TO THE CONTRACTOR FOR PROPOSED UTILITY WORK SHOWN ON THIS SHEET.



BEGIN TIP PROJECT B-3868
-L- POT Sta. 11+00.00

END TIP PROJECT B-3868
-L- Sta. 22+48.22
-Y1- Sta. 15+96.49

PI Sta. 14+89.66 Δ = 75° 55' 50.5" (RT) D = 33' 42" 112.2" L = 225.29' T = 132.65'	PI Sta. 12+24.59 Δ = 37° 51' 16.5" (LT) D = 33' 42" 112.2" L = 112.29'	PI Sta. 16+86.68 Δ = 190° 39' 40.8" (LT) D = 55' 50.5" (RT) L = 112.29'	PI Sta. 20+83.04 Δ = 11° 41' 16.6" (RT) D = 6' 44" 26.4" L = 112.29'	PI Sta. 10+68.57 Δ = 84° 40' 09.5" (RT) D = 95' 29' 34.7" L = 88.67'	PI Sta. 11+88.21 Δ = 15° 54' 01.5" (RT) D = 75' 23' 21.1" L = 21.09' T = 10.61'	PI Sta. 10+26.52 Δ = 74° 09' 43.4" (LT) D = 286' 28" 44.0" L = 25.89' T = 15.12'	PI Sta. 19+96.04 Δ = 11° 41' 16.6" (RT) D = 95' 29' 34.7" L = 88.67'	PI Sta. 21+69.44 Δ = 11° 41' 16.6" (RT) D = 95' 29' 34.7" L = 88.67'	PI Sta. 21+75.31 Δ = 11° 41' 16.6" (RT) D = 95' 29' 34.7" L = 88.67'
--	---	--	---	---	---	--	---	---	---

REVISIONS

8/17/99
5/14/99
08-OCT-2015 14:57 U:\11133\B3868\RDY\psh_04.dgn