

NOTES

DIMENSIONS SHOWN ON THE PLANS ARE APPROXIMATE AND SHOULD BE VERIFIED BY THE CONTRACTOR IN THE FIELD AS NEEDED.

THE DEPICTIONS OF THE EXISTING BRIDGE INDICATED ON THE PLANS IS FROM THE BEST INFORMATION AVAILABLE. SINCE THIS INFORMATION IS SHOWN FOR THE CONVENIENCE OF THE CONTRACTOR, THE CONTRACTOR SHALL HAVE NO CLAIM WHATSOEVER AGAINST THE DEPARTMENT OF TRANSPORTATION FOR ANY DELAYS OR ADDITIONAL COST INCURRED BASED ON DIFFERENCES BETWEEN THE EXISTING BRIDGE AS SHOWN ON THE PLANS AND THE ACTUAL CONDITIONS AT THE PROJECT SITE.

REMOVE EXISTING STEEL GUARDRAILS AND STEEL POSTS AND PROVIDE NEW TIMBER BRIDGE RAILS AS DIRECTED BY THE ENGINEER. SEE SPECIAL PROVISION FOR "TIMBER BRIDGE RAIL".

ALL TREATED LUMBER FOR THE BRIDGE RAILS & POSTS SHALL MEET THE REQUIREMENTS OF SECTION 1082 OF THE NCDOT STANDARD SPECIFICATIONS.

ALL SCREWS, BOLTS, NUTS AND WASHERS ARE TO BE HOT DIPPED GALVANIZED AND SHALL MEET THE REQUIREMENTS OF SECTION 1076 OF THE STANDARD SPECIFICATIONS.

STAGGER 2" X 6" END JOINTS SO THAT THERE ARE NO MORE THAN 2 JOINTS ON A POST.

INASMUCH AS THE PAINT SYSTEM ON THE EXISTING STRUCTURAL STEEL CONTAINS LEAD, THE CONTRACTOR'S ATTENTION IS DIRECTED TO ARTICLE 107-1 OF THE STANDARD SPECIFICATIONS. ANY COST RESULTING FROM COMPLIANCE WITH APPLICABLE STATE OR FEDERAL REGULATIONS PERTAINING TO HANDLING OF MATERIALS CONTAINING LEAD BASED PAINT SHALL BE INCLUDED IN THE BID PRICE FOR "TIMBER BRIDGE RAIL".

FOR TIMBER BRIDGE RAIL, SEE SPECIAL PROVISIONS.

FOR FALSEWORK AND FORMWORK, SEE SPECIAL PROVISIONS.

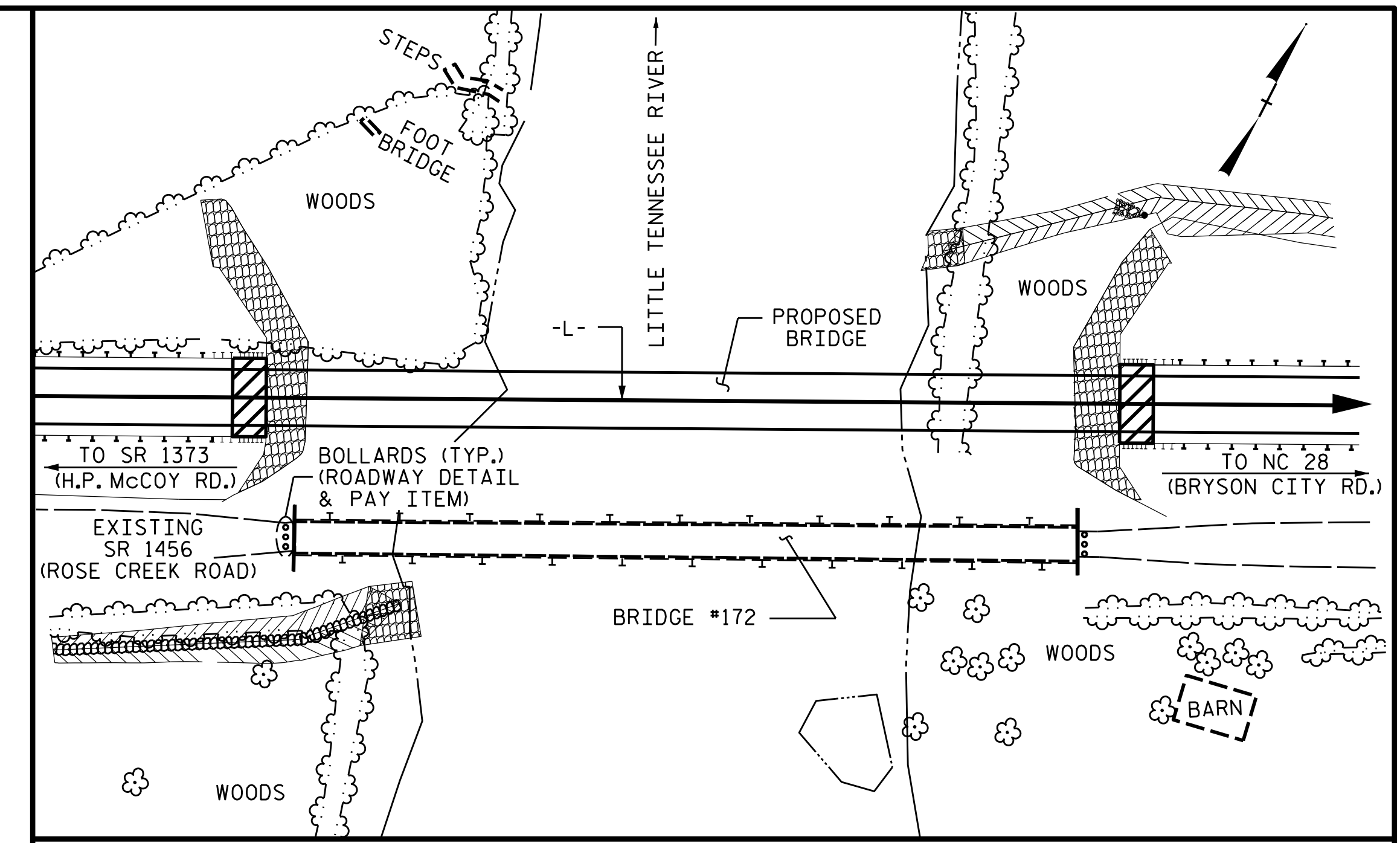
FOR CRANE SAFETY, SEE SPECIAL PROVISIONS.

EXISTING ASPHALT WEARING SURFACE ON BRIDGE DECK WILL BE SEALED BY DIVISION OF HIGHWAYS.

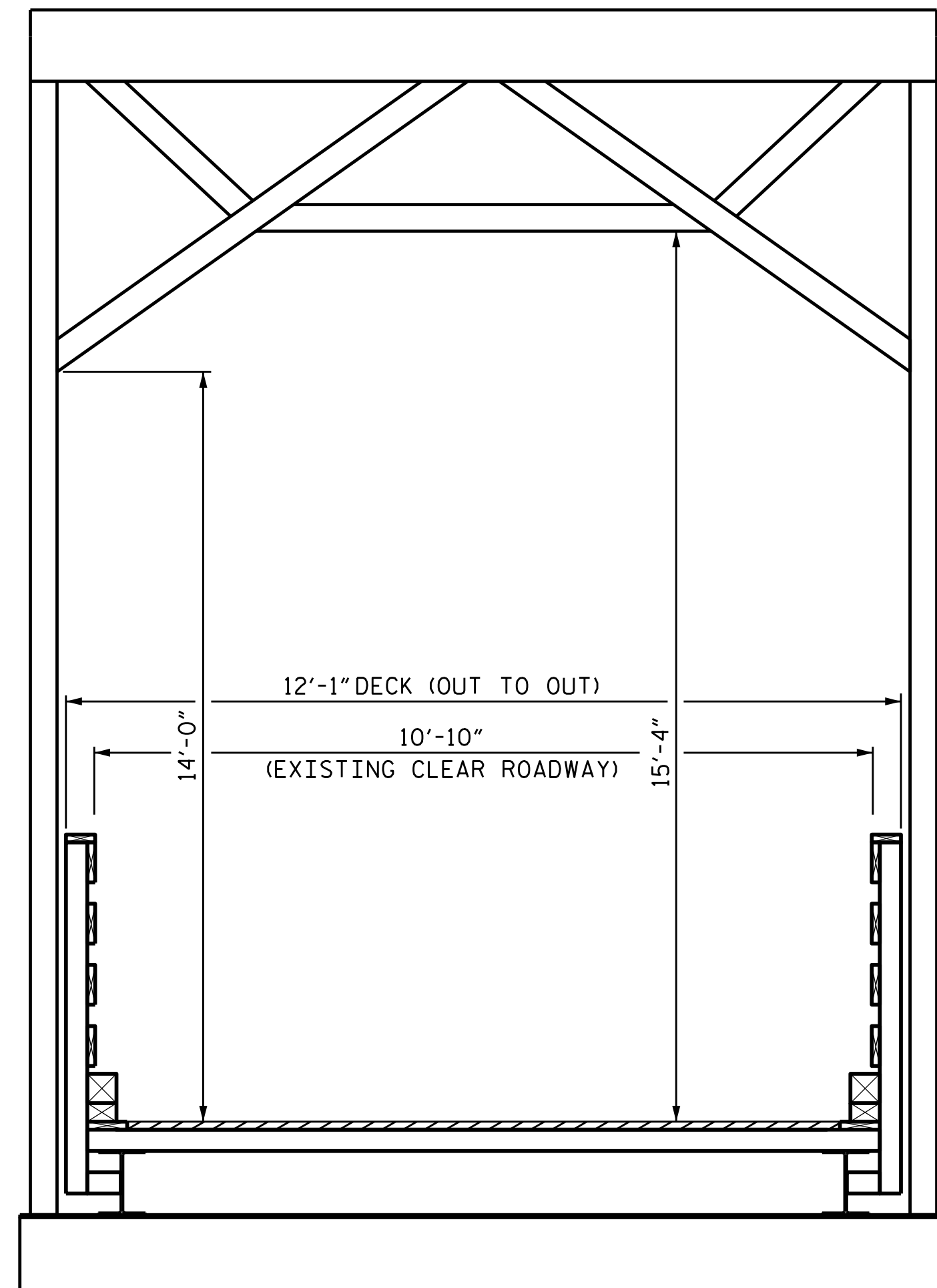
BOLTS SHALL CONFORM TO THE REQUIREMENTS OF ASTM A307 AND NUTS SHALL CONFORM TO THE REQUIREMENTS OF AASHTO M291. BOLTS, NUTS AND WASHERS SHALL BE GALVANIZED. (AT THE CONTRACTOR'S OPTION, STAINLESS STEEL BOLTS, NUTS AND WASHERS MAY BE USED AS AN ALTERNATE FOR THE GALVANIZED BOLTS, NUTS AND WASHERS. THEY SHALL CONFORM TO OR EXCEED THE MECHANICAL REQUIREMENTS OF ASTM A307. THE USE OF THIS ALTERNATE SHALL BE APPROVED BY THE ENGINEER.)

THE DECK RETAINING BOARDS SHALL BE REPLACED AS DIRECTED BY THE ENGINEER.

FOR SUBMITTAL OF WORKING DRAWINGS, SEE SPECIAL PROVISIONS.

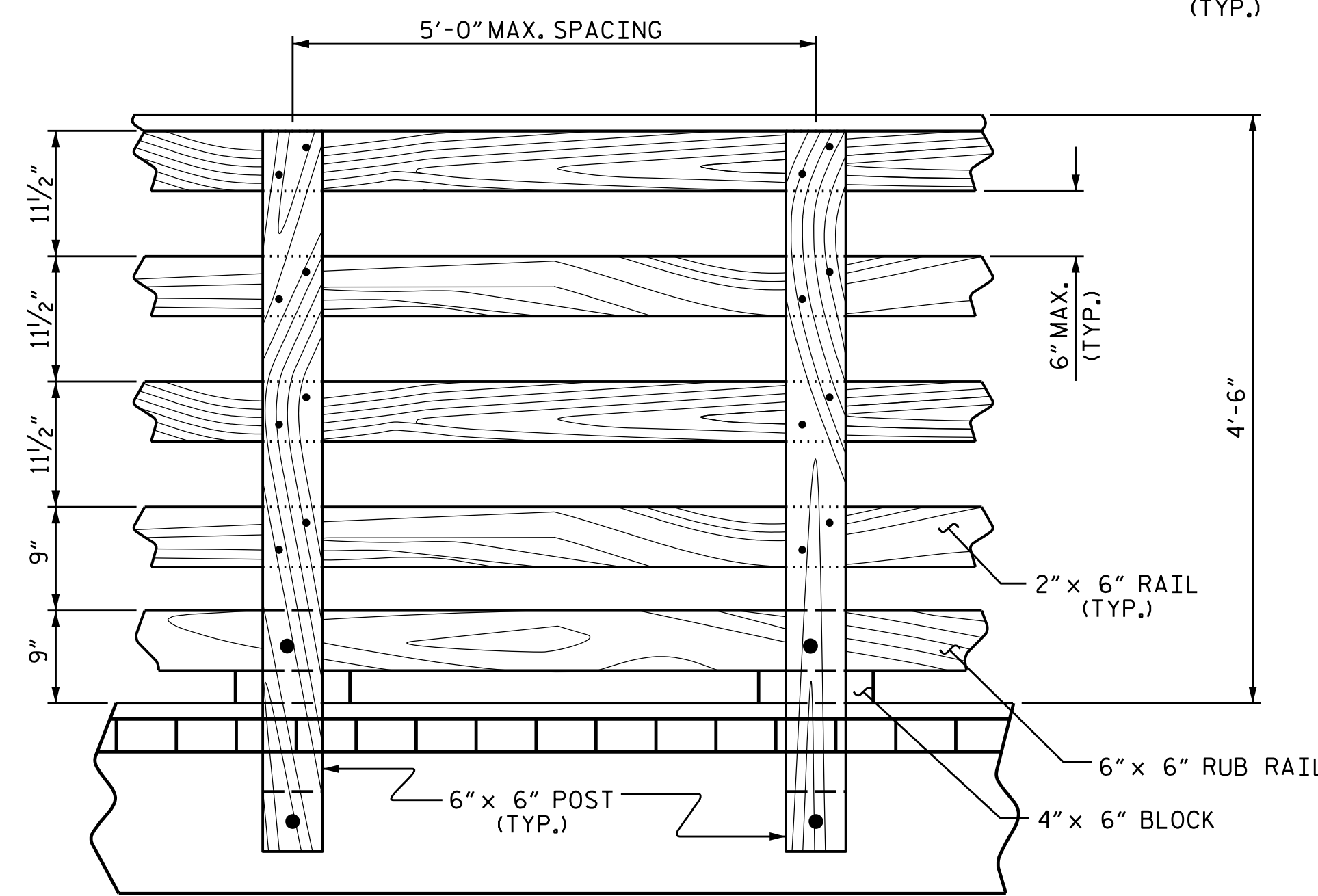


LOCATION SKETCH



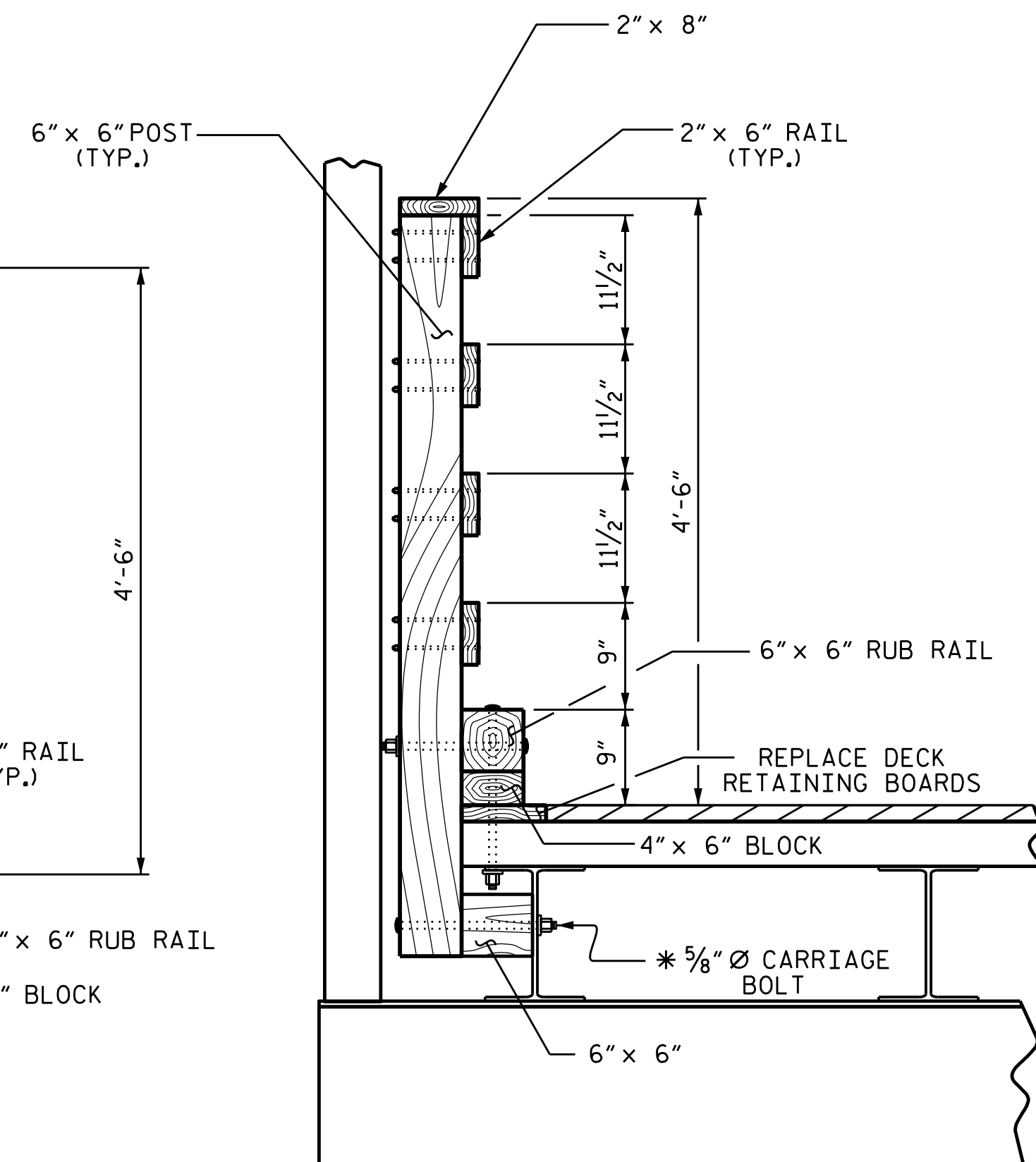
TYPICAL SECTION THRU TRUSS

(SHOWING PROPOSED RAIL REPLACEMENT)



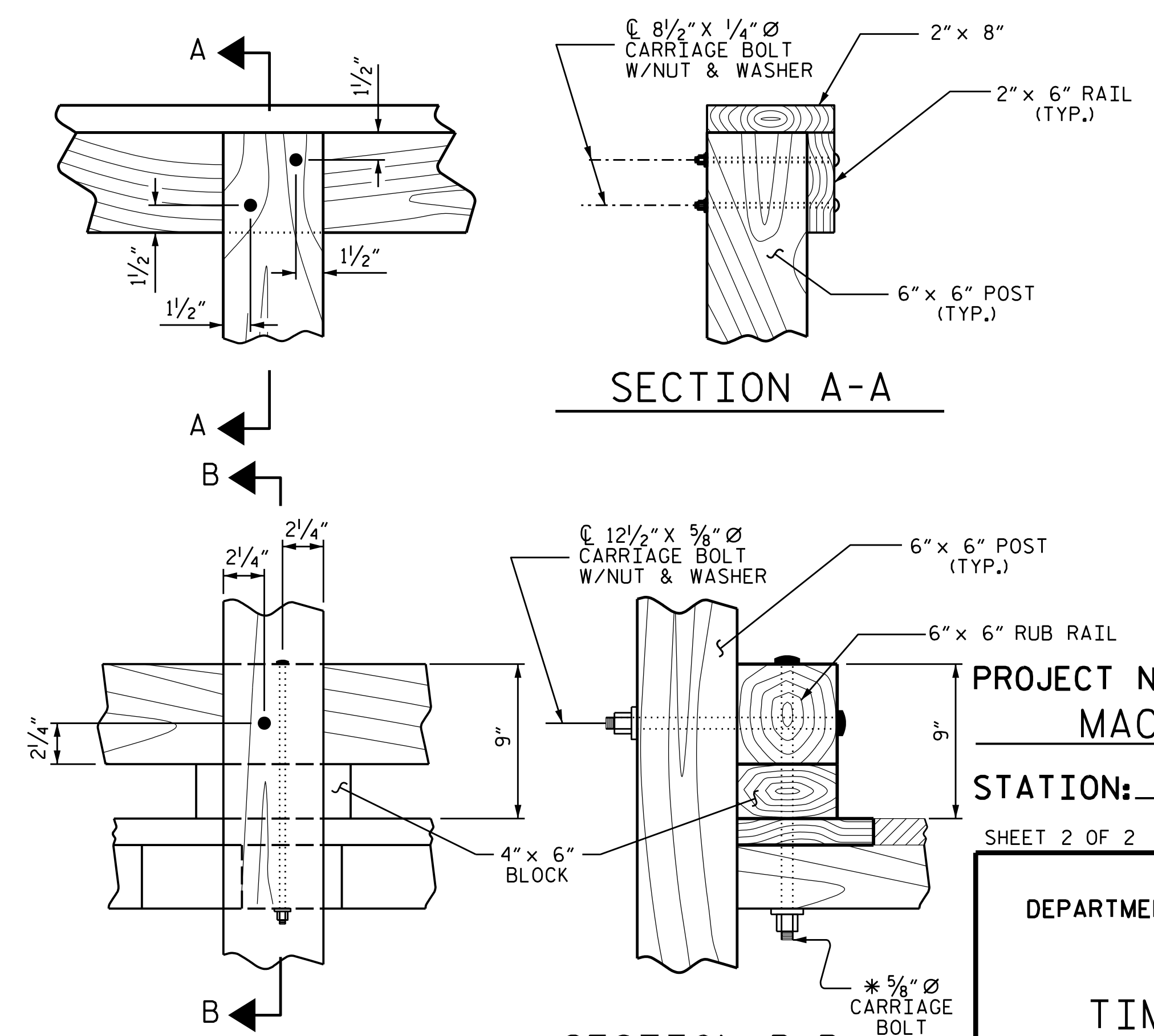
DETAIL "A"

NOTE: OPENING BETWEEN RAILS MAY NOT EXCEED 6"



SECTION THRU RAIL

* BOLT LENGTH TO BE DETERMINED BY CONTRACTOR



SECTION B-B

* BOLT LENGTH TO BE DETERMINED BY CONTRACTOR

CONNECTION DETAILS

OUTSIDE VIEW



Marshall G. Cheek, Jr.
9/22/2015

PROJECT NO. B-3868
MACON COUNTY
 STATION: _____
 SHEET 2 OF 2

STATE OF NORTH CAROLINA
 DEPARTMENT OF TRANSPORTATION
 RALEIGH

TIMBER BRIDGE RAIL DETAILS

DRAWN BY: D. HODGE DATE: 7/15
 CHECKED BY: M.G. CHEEK DATE: 7/15

REVISIONS						SHEET NO.
NO.	BY:	DATE:	NO.	BY:	DATE:	S-40
1			3			TOTAL SHEETS
2			4			40