

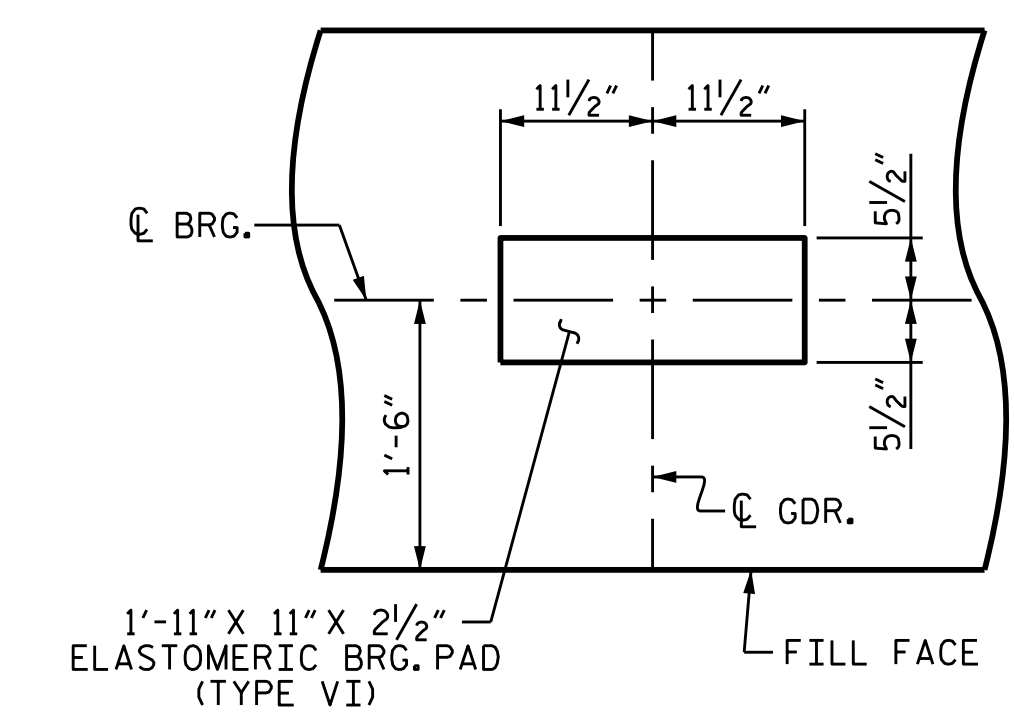
**PLAN**

**NOTES**

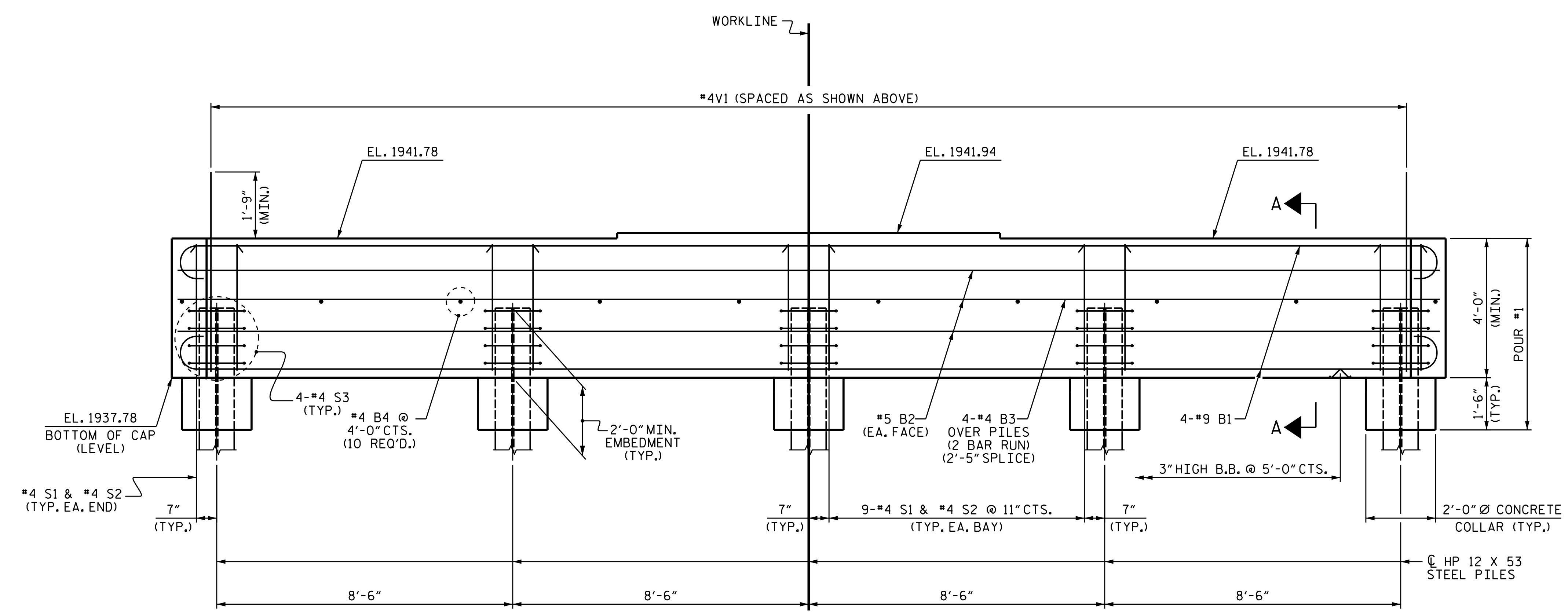
SEE SUPERSTRUCTURE SHEETS FOR UPPER PART OF INTEGRAL END BENT DETAILS.

THE CONTRACTOR SHALL PROVIDE FOR INSTALLATION OF THE 4" DIAMETER DRAIN PIPE THROUGH THE WING WALL AS REQUIRED FOR REINFORCED BRIDGE APPROACH FILLS. SEE THE ROADWAY PLANS. REINFORCING STEEL IN THE WING WALL MAY BE SHIFTED AS NECESSARY TO CLEAR THE DRAIN PIPE.

THE CONTRACTOR'S ATTENTION IS CALLED TO THE FACT THAT THE UPPER PART OF THE END BENT WINGS ARE TO BE POURED WITH POUR #4 OF THE SUPERSTRUCTURE.



**DETAIL A**  
(TYP. EA. BEARING)

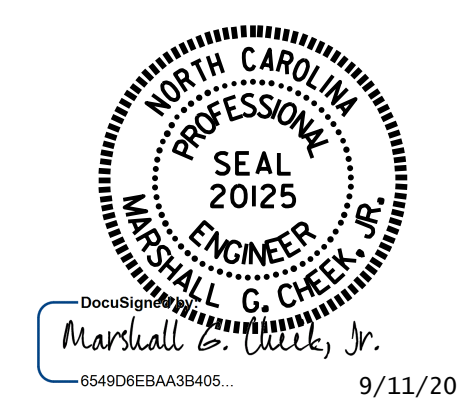


**ELEVATION**

PROJECT NO. B-3868  
MACON COUNTY  
 STATION: 18+33.50 -L-  
 SHEET 1 OF 2

STATE OF NORTH CAROLINA  
 DEPARTMENT OF TRANSPORTATION  
 RALEIGH

**SUBSTRUCTURE  
 INTEGRAL  
 END BENT No. 1**



DRAWN BY : B.N. GRADY DATE : 2/15  
 CHECKED BY : H.T. BARBOUR DATE : 2/15  
 DESIGN ENGINEER OF RECORD: S.T. CHAMPION DATE : 8/15

REVISIONS						SHEET NO.
NO.	BY:	DATE:	NO.	BY:	DATE:	S-28
1			3			TOTAL SHEETS
2			4			40

11-SEP-2015 09:48  
 L:\Structures\Plans\Final Plans\B3868.SD.E\*.01.dgn  
 bngrady