

8/17/99
22-JUL-2015 09:48 C:\Users\jason\Desktop\B-3868-EC.psh.04.dgn

PROJECT REFERENCE NO.	SHEET NO.
B-3868	EC-5/CONST.4
RW SHEET NO.	HYDRAULICS ENGINEER
ROADWAY DESIGN ENGINEER	

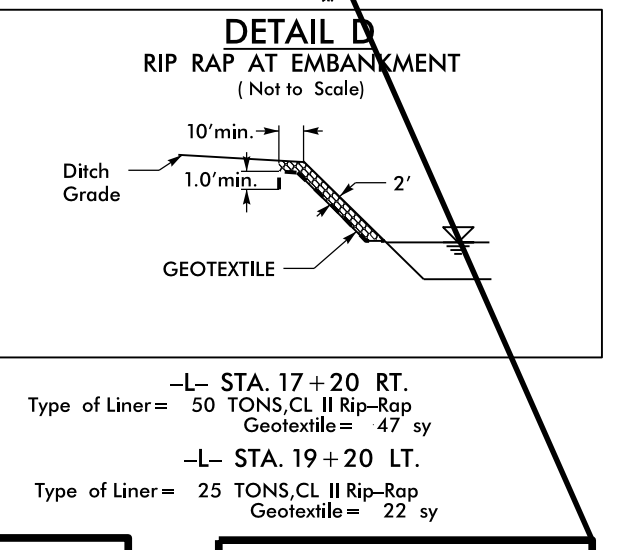
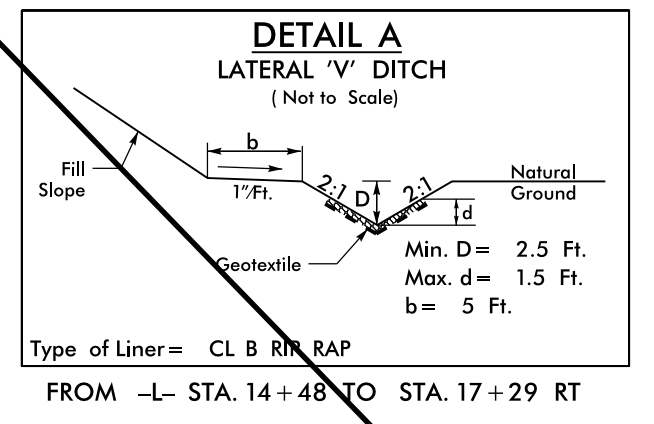
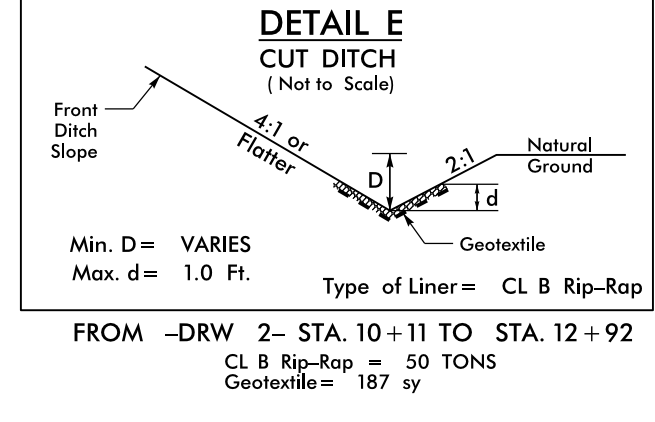
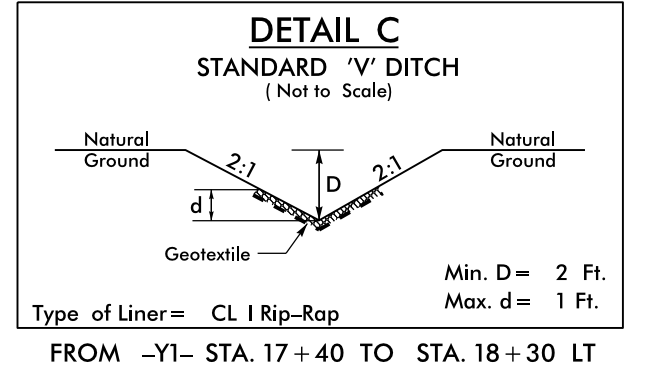
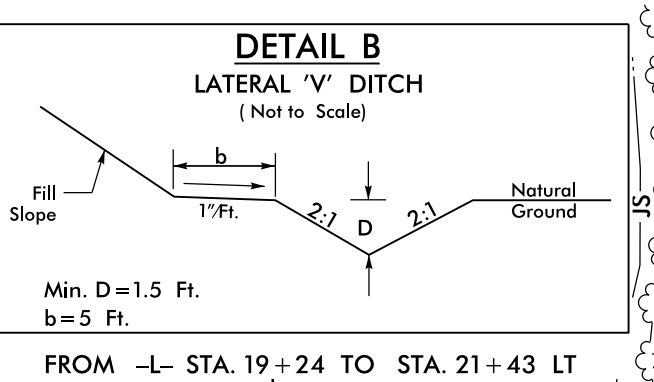
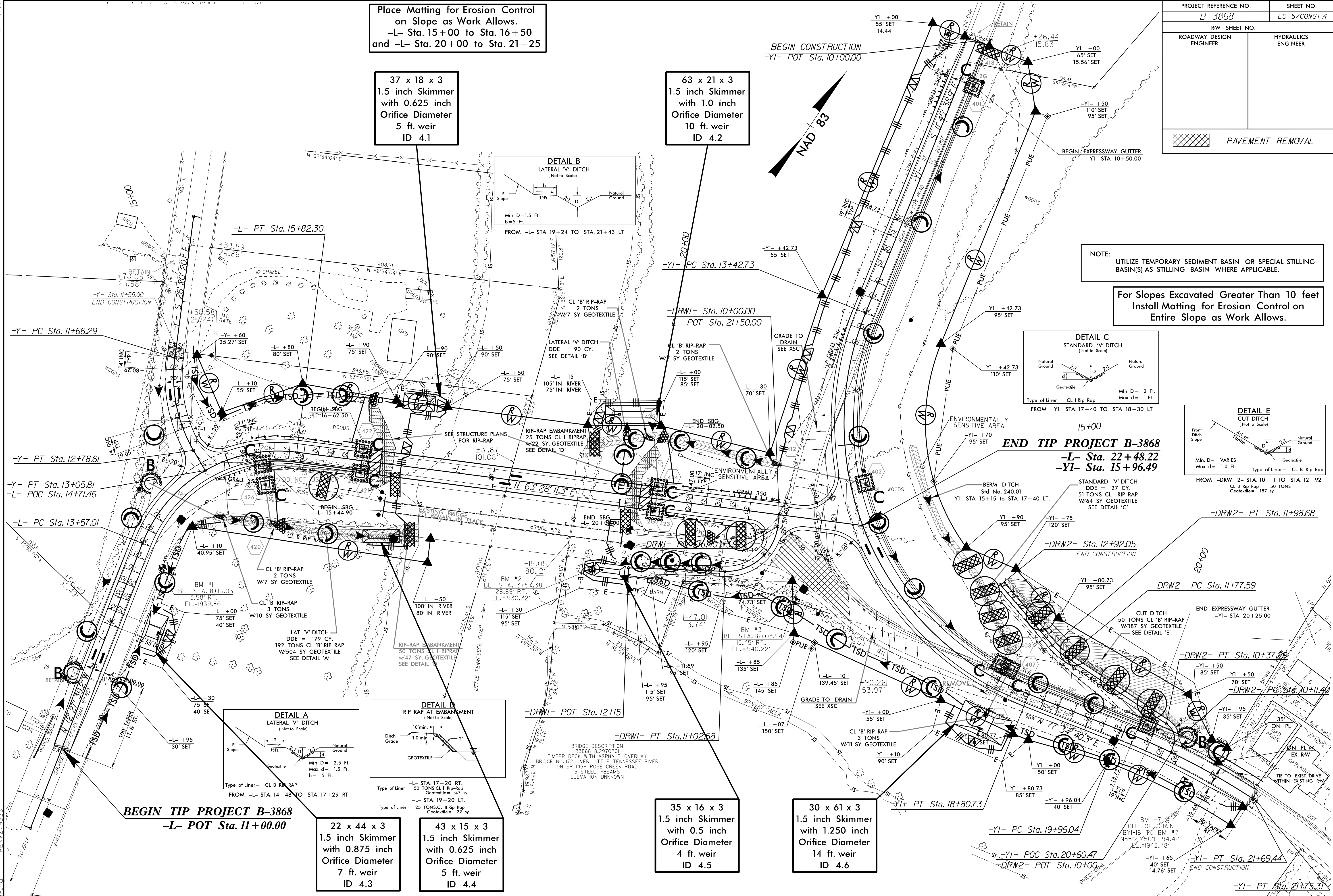
Place Matting for Erosion Control on Slope as Work Allows.
-L- Sta. 15+00 to Sta. 16+50
and -L- Sta. 20+00 to Sta. 21+25

37 x 18 x 3
1.5 inch Skimmer
with 0.625 inch
Orifice Diameter
5 ft. weir
ID 4.1

63 x 21 x 3
1.5 inch Skimmer
with 1.0 inch
Orifice Diameter
10 ft. weir
ID 4.2

NOTE: UTILIZE TEMPORARY SEDIMENT BASIN OR SPECIAL STILLING BASIN(S) AS STILLING BASIN WHERE APPLICABLE.

For Slopes Excavated Greater Than 10 feet
Install Matting for Erosion Control on
Entire Slope as Work Allows.



22 x 44 x 3
1.5 inch Skimmer
with 0.875 inch
Orifice Diameter
7 ft. weir
ID 4.3

43 x 15 x 3
1.5 inch Skimmer
with 0.625 inch
Orifice Diameter
5 ft. weir
ID 4.4

35 x 16 x 3
1.5 inch Skimmer
with 0.5 inch
Orifice Diameter
4 ft. weir
ID 4.5

30 x 61 x 3
1.5 inch Skimmer
with 1.250 inch
Orifice Diameter
14 ft. weir
ID 4.6

BEGIN TIP PROJECT B-3868
-L- POT Sta. 11+00.00

END TIP PROJECT B-3868
-L- Sta. 22+48.22
-YI- Sta. 15+96.49

BRIDGE DESCRIPTION
B3868 8.2970701
TIMBER DECK WITH ASPHALT OVERLAY
BRIDGE NO. 172 OVER LITTLE TENNESSEE RIVER
ON SR 1456 ROSE CREEK ROAD
5 STEEL I-BEAMS
ELEVATION UNKNOWN

OUT OF CHAIN
BYI-16 TO BM #7
N85°25'50"E 94.42'
EL. = 1942.78'

-YI- PT Sta. 21+69.44
END CONSTRUCTION
-YI- PT Sta. 21+75.31