

SURVEY CONTROL SHEET B-3868

-FINAL-

PROJECT REFERENCE NO.	SHEET NO.
B-3868	1C-1
Location and Surveys	

BL POINT	DESC.	NORTH	EAST	ELEVATION	L STATION	OFFSET
11	BL-2	583022.8170	674824.5940	1942.65	10+23.90	12.27 RT
3	BL-3	583393.6210	674762.7980	1940.01	14+07.54	25.61 RT
4	BL-4	583513.2610	674981.0320	1929.48	17+07.36	85.85 RT
5	BL-5	583661.3850	675214.2060	1941.19	19+02.14	57.48 RT
6	BL-6	583731.6650	675410.9730	1942.19	21+09.58	82.49 RT

BY POINT	DESC.	NORTH	EAST	ELEVATION	Y STATION	OFFSET
8	BY-8	584100.7580	674383.2220	1941.44	OUTSIDE PROJECT LIMITS	
9	BY-9	583795.0850	674543.5470	1946.59	OUTSIDE PROJECT LIMITS	
20	BL-3	583393.6210	674762.7980	1940.01	OUTSIDE PROJECT LIMITS	

BY1 POINT	DESC.	NORTH	EAST	ELEVATION	Y1 STATION	OFFSET
13	BY1-13	584427.6090	675194.1310	1944.35	OUTSIDE PROJECT LIMITS	
14	BY1-14	584056.4520	675271.9490	1952.81	13+21.99	15.20 RT
21	BL-6	583731.6650	675410.9730	1942.19	16+32.14	92.88 RT
16	BY1-16	583786.4350	675809.7860	1948.04	19+92.95	14.55 RT

-FINAL- ROW MARKER IRON PIN AND CAP-E				
ALIGN	STATION	OFFSET	NORTH	EAST
L	15+10.00	-55.00	583524.0235	674732.1267
L	15+80.00	-80.00	583604.2585	674792.0479
L	16+90.00	-75.00	583649.4227	674893.6566
L	17+50.00	-75.00	583676.2229	674947.3385
L	19+15.00	-75.00	583749.9233	675094.9639
L	20+00.00	-85.00	583796.8372	675166.5466
L	21+30.00	-70.00	583841.4837	675289.5575
L	21+85.00	135.00	583682.6372	675430.3332
L	21+75.00	74.73	583732.0940	675394.4654
L	17+50.00	80.00	583537.5445	675016.5723
L	17+50.00	108.00	583512.4929	675029.0790
L	14+10.00	40.95	583394.2570	674778.2547

-FINAL- ROW MARKER IRON PIN AND CAP-E				
ALIGN	STATION	OFFSET	NORTH	EAST
Y1	13+42.73	55.00	584028.0312	675237.2167
Y1	10+00.00	55.00	584363.5663	675167.3593
Y1	10+00.00	14.44	584371.8338	675207.0693
Y1	10+00.00	-15.56	584377.9550	675236.4705
Y1	10+00.00	-65.00	584388.0254	675284.8402
Y1	10+50.00	-95.00	584345.1898	675324.4017
Y1	13+42.73	-95.00	584058.6045	675384.0679
Y1	16+90.00	-95.00	583877.9082	675541.2622
Y1	17+75.00	-120.00	583889.5163	675603.2420
Y1	18+00.73	-95.00	583869.2776	675676.6272
Y1	20+50.00	-70.00	583880.4138	675852.0161
Y1	20+95.00	-35.00	583851.7515	675903.8326
Y1	21+14.56	-35.00	583853.5590	675924.1147
Y1	21+13.86	-15.08	583833.6427	675924.9439
Y1	21+65.00	14.78	583806.2943	675977.4644
Y1	21+65.00	40.00	583781.0755	675977.9193
Y1	19+96.04	40.00	583762.2436	675818.2820
Y1	19+00.00	50.00	583731.8183	675726.6415
Y1	18+80.77	50.00	583727.6817	675707.8617
Y1	18+00.00	55.00	583713.6260	675615.7796

-FINAL- ROW MARKER IRON PIN AND CAP-E				
ALIGN	STATION	OFFSET	NORTH	EAST
Y	11+60.00	-25.27	583563.2481	674671.1051

-FINAL- ROW MARKER PERMANENT EASEMENT-E				
ALIGN	STATION	OFFSET	NORTH	EAST
L	21+85.00	145.00	583673.6902	675434.7999
L	22+07.00	150.00	583679.0435	675456.7166
L	22+10.00	142.66	583686.9506	675456.1222

-FINAL- ROW MARKER PERMANENT EASEMENT-E				
ALIGN	STATION	OFFSET	NORTH	EAST
Y1	10+50.00	-110.00	584348.2472	675339.0868
Y1	13+42.73	-110.00	584061.6625	675398.7529
Y1	15+70.00	-95.00	583920.6975	675466.6368

.....
 BM1 ELEVATION = 1939.86
 N 583335 E 674776
 BL STATION 8+16.00 4 RIGHT
 RAILROAD SPIKE SET IN 12" SYCAMORE TREE

.....
 BM2 ELEVATION = 1930.33
 N 583614 E 675193
 BL STATION 13+57.00 29 RIGHT
 RAILROAD SPIKE IN 8" BIRCH TREE

.....
 BM3 ELEVATION = 1940.22
 N 583715 E 675410
 BL STATION 16+04.00 15 RIGHT
 RAILROAD SPIKE SET IN 8" WALNUT TREE

.....
 BM4 ELEVATION = 1943.65
 N 584129 E 674325
 BY STATION 5+00.00
 N 63°40'16.70" W DIST 64.39
 RAILROAD SPIKE SET IN 8" WALNUT TREE

.....
 BM5 ELEVATION = 1949.87
 N 582867 E 674819
 BL STATION 5+00.00
 S 01°53'26.03" W DIST 156.29'
 RAILROAD SPIKE SET IN 6" LOCUST TREE

.....
 BM6 ELEVATION = 1942.54
 N 584563 E 675175
 BY1 STATION 16+35.00
 N 07°53'34.13" W DIST 136.90
 TACK IN HOLE IN HEADWALL

.....
 BM7 ELEVATION = 1942.78
 N 583794 E 675904
 BY1 STATION 16+35.00
 N 85°27'39.39" E DIST 94.43
 RAILROAD SPIKE SET IN 24" WALNUT TREE

-L- FINAL

TYPE	STATION	NORTH	EAST
POT	10+00.00	582996.8340	674817.7700
PC	13+57.01	583345.4342	674740.7369
PT	15+82.30	583534.2144	674830.7985
POT	22+48.22	583831.6617	675426.5991

-Y- FINAL

TYPE	STATION	NORTH	EAST
POT	10+00.00	583695.4279	674577.4737
PC	11+66.29	583546.3980	674651.2549
PT	12+78.61	583468.7778	674729.5997
POT	13+05.81	583456.9383	674754.0838

-Y1- FINAL

TYPE	STATION	NORTH	EAST
POT	10+00.00	584374.7767	675221.2047
PC	13+42.73	584039.2411	675291.0622
PT	18+80.73	583776.5016	675697.0629
PC	19+96.04	583801.3080	675809.6813
PT	21+69.44	583821.1374	675981.6356
POT	21+75.31	583821.2126	675987.5021

DATUM DESCRIPTION

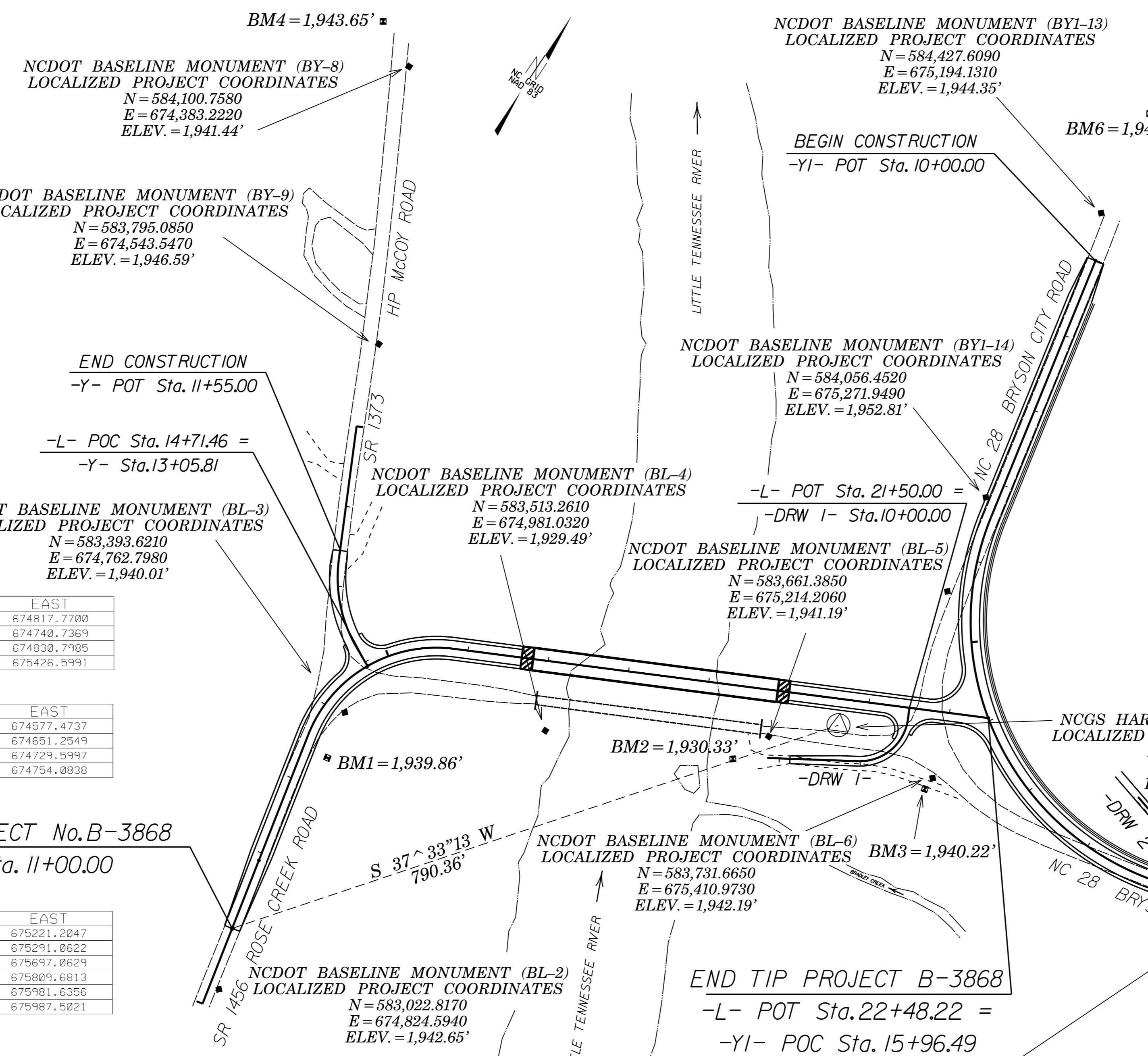
THE LOCALIZED COORDINATE SYSTEM DEVELOPED FOR THIS PROJECT IS BASED ON THE STATE PLANE COORDINATES ESTABLISHED BY NCGS FOR MONUMENT "McCoy"

WITH NAD 83 STATE PLANE GRID COORDINATES OF
 NORTHING: 583721.0635(±) EASTING: 675277.9211(±)
 ELEVATION: 1940.58(±)

THE AVERAGE COMBINED GRID FACTOR USED ON THIS PROJECT (GROUND TO GRID) IS: 0.99979853

THE N.C. LAMBERT GRID BEARING AND LOCALIZED HORIZONTAL GROUND DISTANCE FROM "McCoy" TO -L- STATION 11+00.00 IS
 S 37°33'13" W 790.36'

ALL LINEAR DIMENSIONS ARE LOCALIZED HORIZONTAL DISTANCES
 VERTICAL DATUM USED IS NGVD 29



NOTES:

1. THE CONTROL DATA FOR THIS PROJECT CAN BE FOUND ELECTRONICALLY BY SELECTING PROJECT CONTROL DATA AT:
[HTTPS://CONNECT.NCDOT.GOV/RESOURCES/LOCATION](https://connect.ncdot.gov/resources/location)

THE FILES TO BE FOUND ARE AS FOLLOWS:
 B-3868_LS_CONTROL.TXT

SITE CALIBRATION INFORMATION HAS NOT BEEN PROVIDED FOR THIS PROJECT. IF FURTHER INFORMATION IS NEEDED, PLEASE CONTACT THE LOCATION AND SURVEYS UNIT.

⊕ INDICATES GEODETIC CONTROL MONUMENTS USED OR SET FOR HORIZONTAL PROJECT CONTROL BY THE NCDOT LOCATION AND SURVEYS UNIT.
 PROJECT CONTROL ESTABLISHED USING EXISTING HARN MONUMENTS.

NOTE: DRAWING NOT TO SCALE

6/2/09 19-NOV-2015 07:45 G:\3868.LS-1c-1.dgn