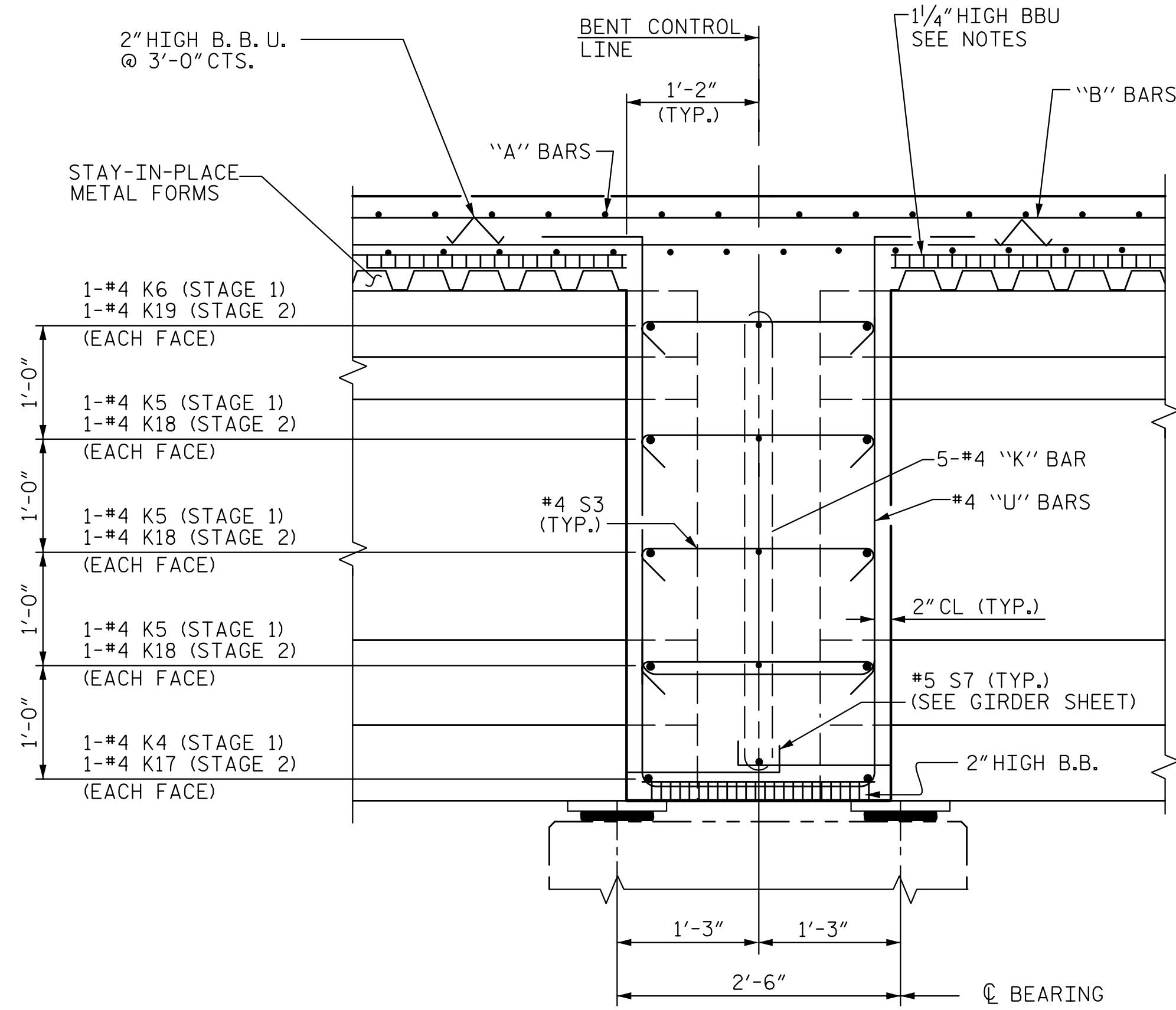


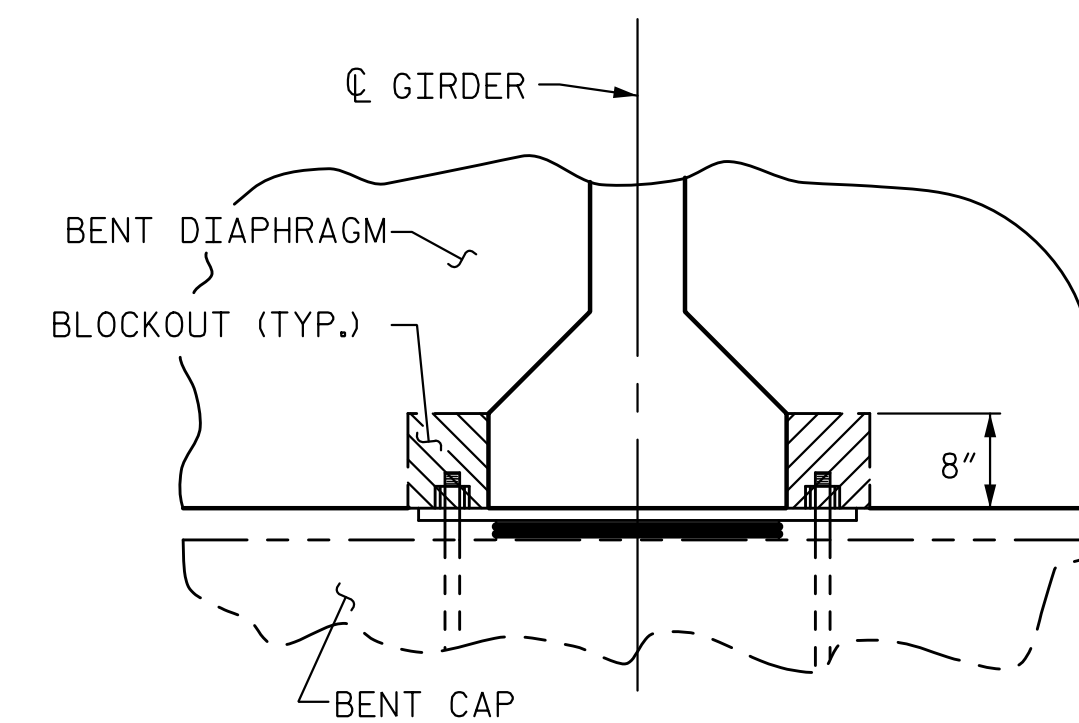
SECTION THRU END BENT DIAPHRAGM

NO END BENT DIAPHRAGM REQUIRED IN THE CLOSURE POUR BAY.
 * #5 "G" BAR MAY BE SHIFTED SLIGHTLY, AS NECESSARY,
 TO CLEAR STEEL REINFORCING AND STIRRUPS.

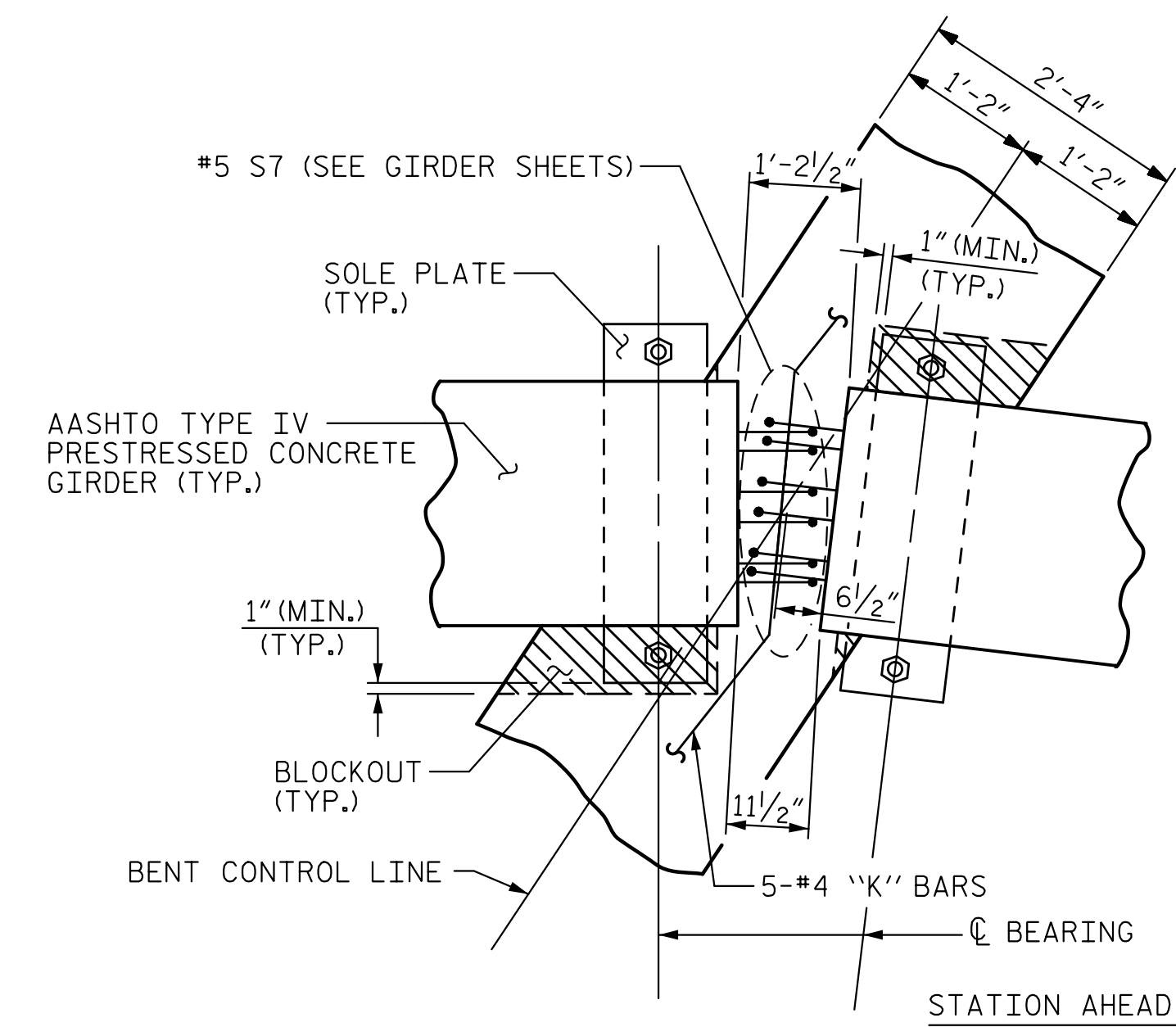


SECTION THRU BENT DIAPHRAGM

NO BENT DIAPHRAGM REQUIRED IN THE CLOSURE POUR BAY.

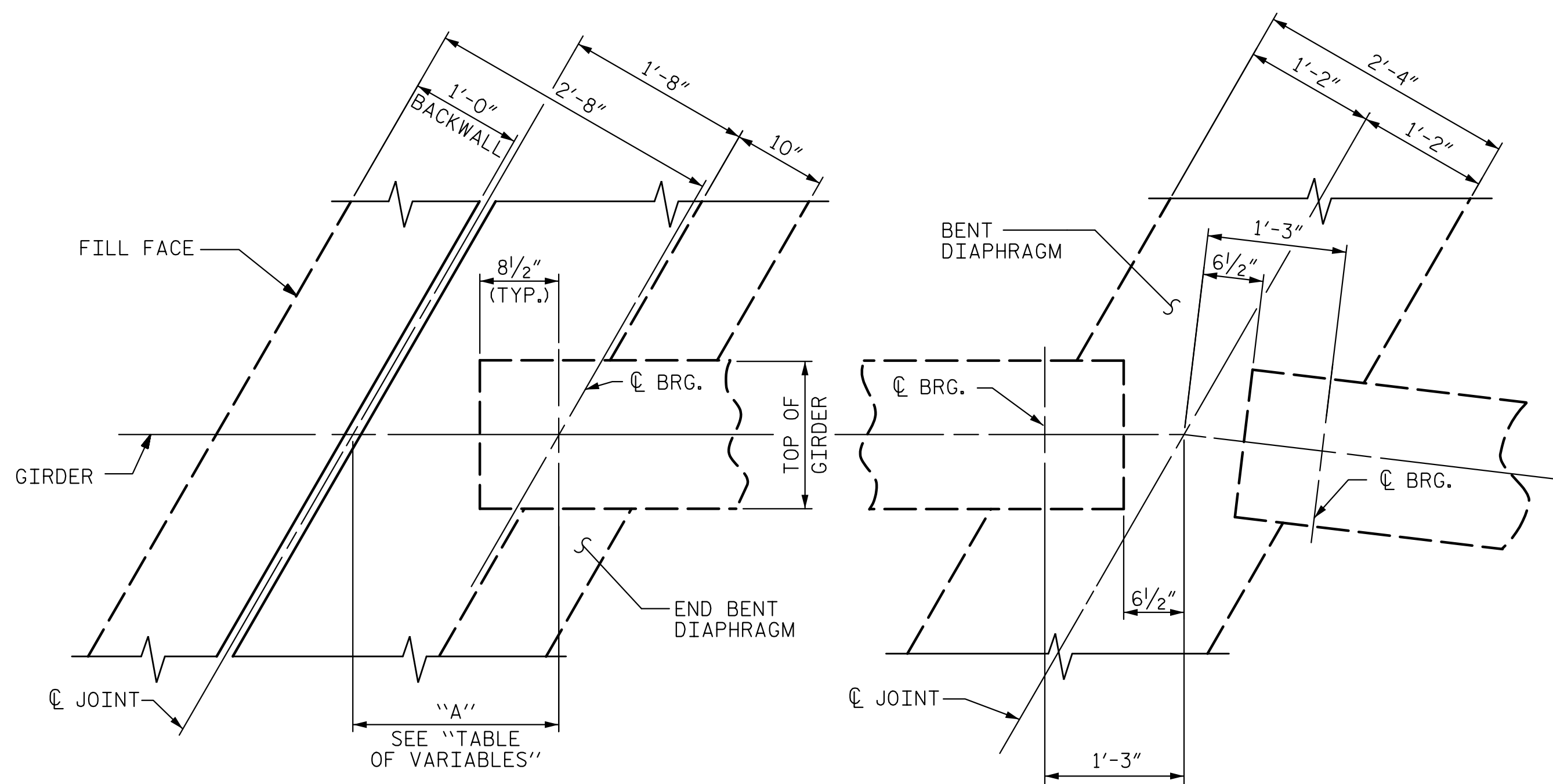


SECTION



PLAN

BENT DIAPHRAGM BLOCK-OUT DETAIL



END BENT DIAPHRAGM

BENT DIAPHRAGM

PLAN

TABLE OF VARIABLES	
GIRDER	"A"
1A	2'-0"
2A	2'-0 3/16"
3A	2'-0 9/16"
4A	2'-0 7/16"
5A	2'-0 9/16"
6A	2'-0 3/4"
1C	1'-9 7/8"
2C	1'-9 7/8"
3C	1'-9 3/16"
4C	1'-9 3/16"
5C	1'-9 1/4"
6C	1'-9 5/16"

PROJECT NO. B-4159

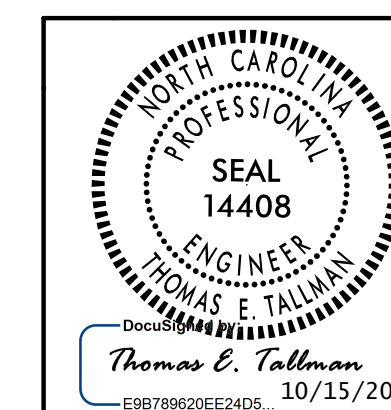
JACKSON COUNTY

STATION: 20+16.00 -L-

SHEET 2 OF 3

STATE OF NORTH CAROLINA
 DEPARTMENT OF TRANSPORTATION
 RALEIGH
 SUPERSTRUCTURE

TYPICAL SECTION
 DETAILS



REVISIONS						SHEET NO.
NO.	BY:	DATE:	NO.	BY:	DATE:	S-9
1			3			TOTAL SHEETS
2			4			64

10/14/2015 10:41:59 AM \\sbs\B-4159.sd...ts_02.dgn

DRAWN BY : D. H. CARTER DATE : SEP 2015
 CHECKED BY : K. M. MOBLEY DATE : SEP 2015
 DESIGN ENGINEER OF RECORD: T. E. TALLMAN DATE : OCT 2015