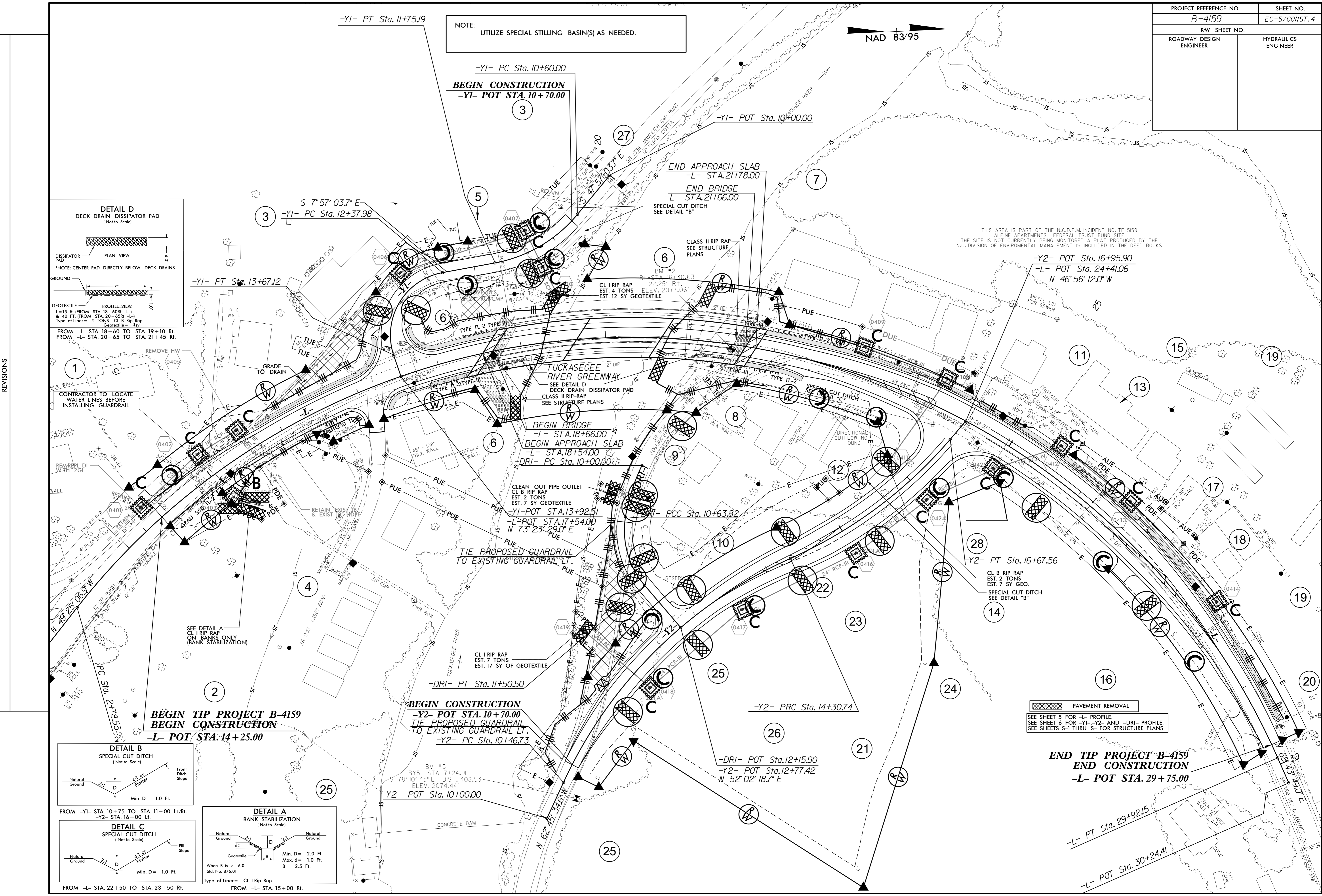
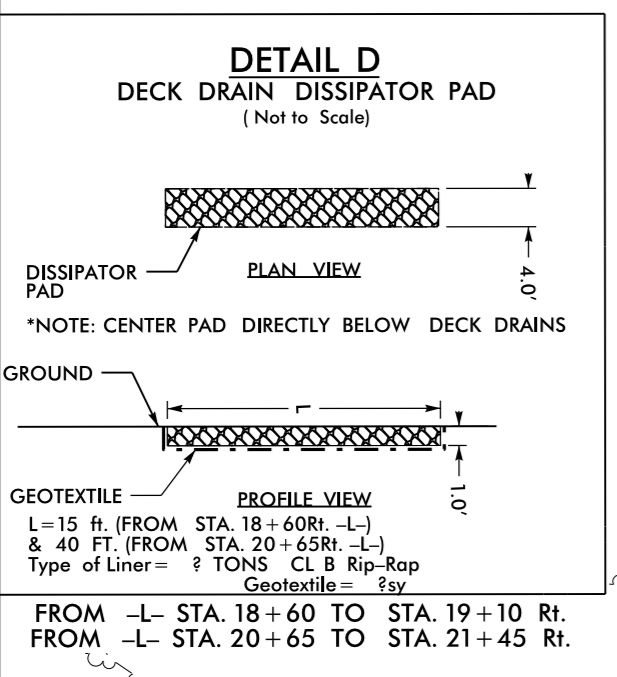


PROJECT REFERENCE NO.	SHEET NO.
B-4159	EC-5/CONST. 4
RW SHEET NO.	
ROADWAY DESIGN ENGINEER	HYDRAULICS ENGINEER

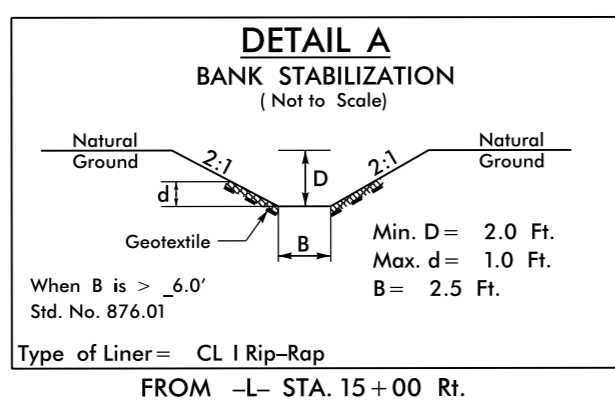
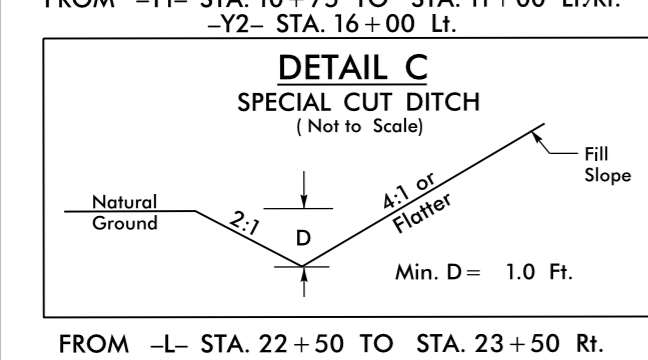
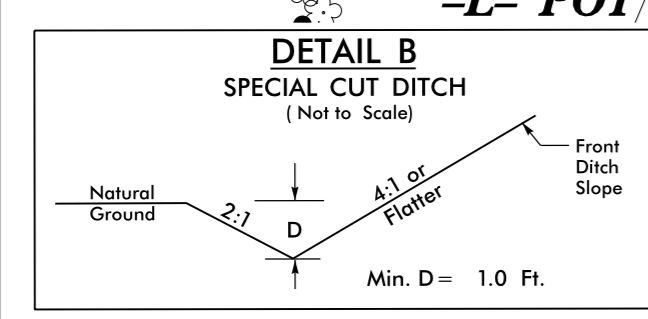


NOTE:
UTILIZE SPECIAL STILLING BASIN(S) AS NEEDED.

NAD 83/95



REMOVED
CONTRACTOR TO LOCATE WATER LINES BEFORE INSTALLING GUARDRAIL



BEGIN TIP PROJECT B-4159
BEGIN CONSTRUCTION
-L- POT STA. 14+25.00

BEGIN CONSTRUCTION
-Y2- POT STA. 10+70.00
TIE PROPOSED GUARDRAIL TO EXISTING GUARDRAIL LT.
-Y2- PC STA. 10+46.73

-DRI- POT STA. 12+15.90
-Y2- POT STA. 12+77.42
N 52° 02' 18.7" E

END TIP PROJECT B-4159
END CONSTRUCTION
-L- POT STA. 29+75.00

PAVEMENT REMOVAL
SEE SHEET 5 FOR -L- PROFILE.
SEE SHEET 6 FOR -Y1-, -Y2-, AND -DRI- PROFILE.
SEE SHEETS S-1 THRU S- FOR STRUCTURE PLANS

THIS AREA IS PART OF THE N.C.D.E.M. INCIDENT NO. TF-5159 ALPINE APARTMENTS FEDERAL TRUST FUND SITE. THE SITE IS NOT CURRENTLY BEING MONITORED A PLAT PRODUCED BY THE N.C. DIVISION OF ENVIRONMENTAL MANAGEMENT IS INCLUDED IN THE DEED BOOKS

-Y2- POT STA. 16+95.90
-L- POT STA. 24+41.06
N 46° 56' 12.0" W

TUCKASEGEE RIVER GREENWAY
SEE DETAIL D
DECK DRAIN DISSIPATOR PAD
CLASS II RIP-RAP
SEE STRUCTURE PLANS

BEGIN BRIDGE
-L- STA. 18+66.00
BEGIN APPROACH SLAB
-L- STA. 18+54.00
-DRI- PC STA. 10+00.00

CLEAN OUT PIPE OUTLET
CL B RIP RAP
EST. 2 TONS
EST. 7 SY GEOTEXTILE
-Y1-POT STA. 13+92.51
-L-POT STA. 17+54.00
N 73° 23' 29.0" E

-DRI- PT STA. 11+50.50

BM #5
-BY5- STA 7+24.91
S 78° 10' 43" E DIST. 408.53
ELEV. 2074.44'

-Y2- POT STA. 10+00.00

END APPROACH SLAB
-L- STA. 21+78.00
END BRIDGE
-L- STA. 21+66.00
SPECIAL CUT DITCH
SEE DETAIL "B"

CLASS II RIP-RAP
SEE STRUCTURE PLANS

CL B RIP RAP
EST. 2 TONS
EST. 7 SY GEO.
SPECIAL CUT DITCH
SEE DETAIL "B"

REVISIONS