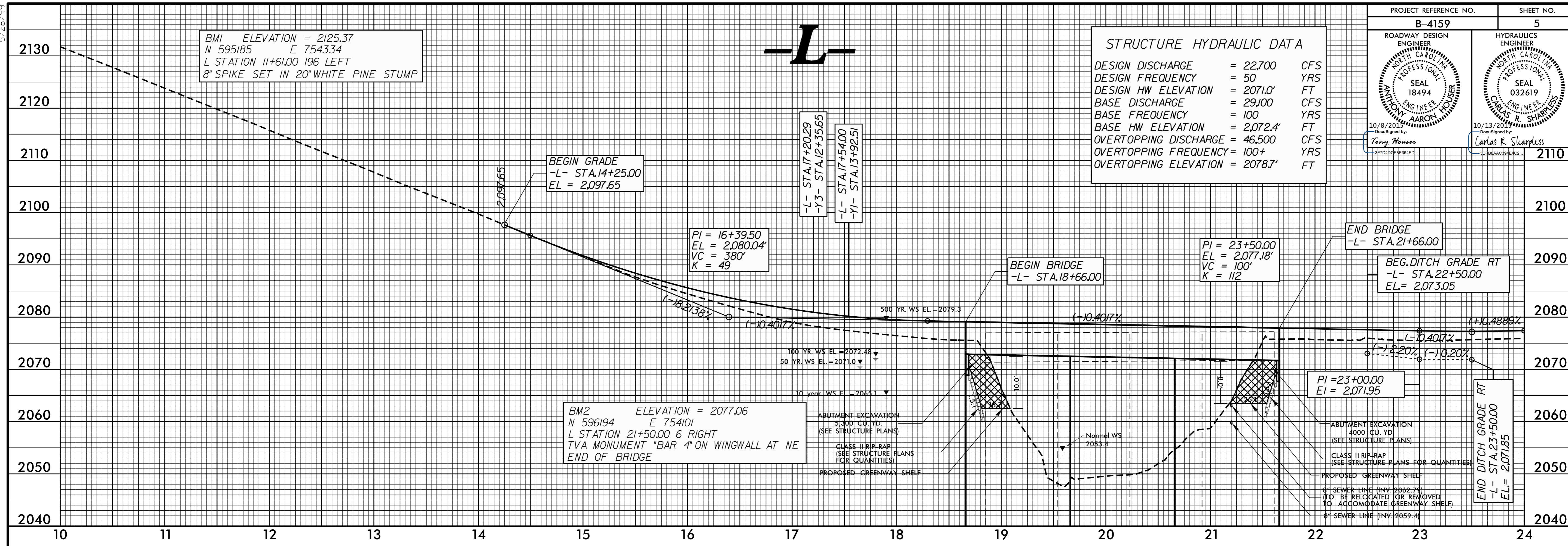


5/28/99

PROJECT REFERENCE NO. <b>B-4159</b>	SHEET NO. <b>5</b>
ROADWAY DESIGN ENGINEER NORTH CAROLINA PROFESSIONAL SEAL 18494	HYDRAULICS ENGINEER NORTH CAROLINA PROFESSIONAL SEAL 032619
Developed by <i>Tony House</i>	Developed by <i>Carlos R. Sharpless</i>

**STRUCTURE HYDRAULIC DATA**

DESIGN DISCHARGE = 22,700 CFS  
 DESIGN FREQUENCY = 50 YRS  
 DESIGN HW ELEVATION = 2071.0' FT  
 BASE DISCHARGE = 29,100 CFS  
 BASE FREQUENCY = 100 YRS  
 BASE HW ELEVATION = 2,072.4' FT  
 OVERTOPPING DISCHARGE = 46,500 CFS  
 OVERTOPPING FREQUENCY = 100+ YRS  
 OVERTOPPING ELEVATION = 2078.7' FT



BMI ELEVATION = 2125.37  
 N 595185 E 754334  
 L STATION 11+61.00 196 LEFT  
 8" SPIKE SET IN 20" WHITE PINE STUMP

**-L-**

BEGIN GRADE  
 -L- STA.14+25.00  
 EL = 2,097.65

PI = 16+39.50  
 EL = 2,080.04'  
 VC = 380'  
 K = 49

-L- STA.17+20.29  
 -Y3- STA.12+35.65

-L- STA.17+54.00  
 -Y1- STA.13+92.25

BEGIN BRIDGE  
 -L- STA.18+66.00

PI = 23+50.00  
 EL = 2,077.18'  
 VC = 100'  
 K = 112

END BRIDGE  
 -L- STA.21+66.00

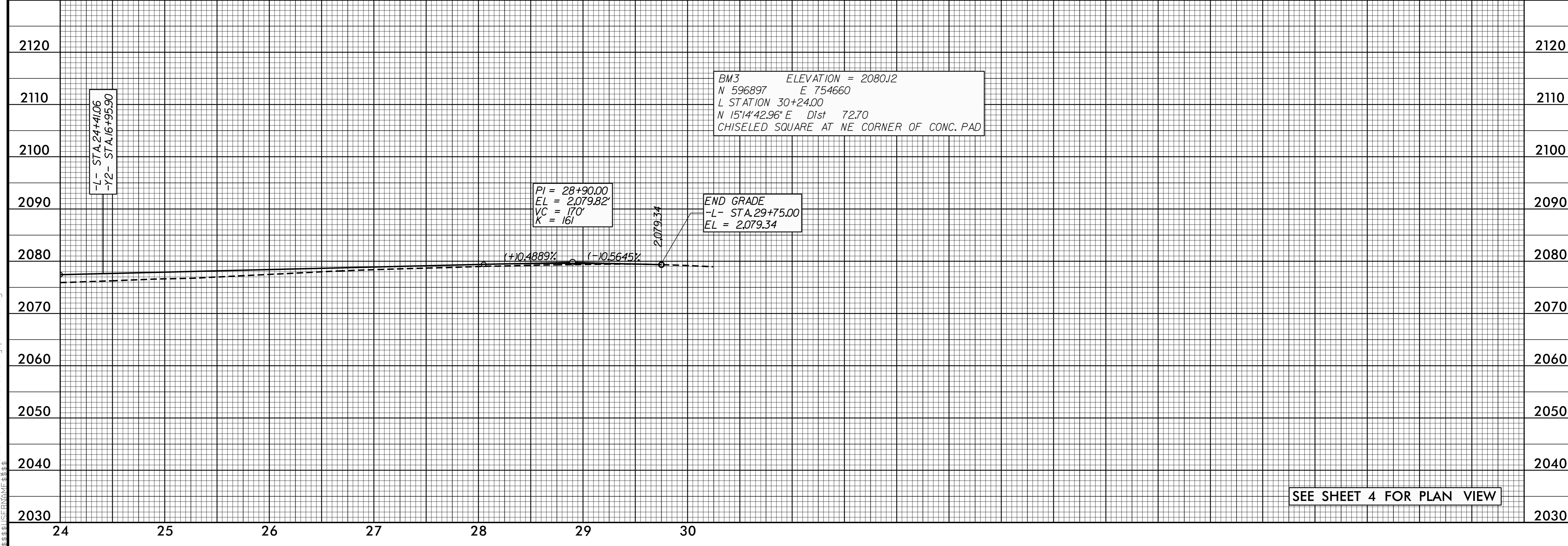
BEG. DITCH GRADE RT  
 -L- STA.22+50.00  
 EL = 2,073.05

BM2 ELEVATION = 2077.06  
 N 596194 E 754101  
 L STATION 21+50.00 6 RIGHT  
 TVA MONUMENT "BAR 4" ON WINGWALL AT NE  
 END OF BRIDGE

PI = 23+00.00  
 EL = 2,071.95

END DITCH GRADE RT  
 -L- STA.23+50.00  
 EL = 2,071.85

02-OCT-2015 09:40:11:1:Preferred\4159\_rdy.p1sht.5.dgn



-L- STA.24+41.06  
 -Y2- STA.16+95.90

PI = 28+90.00  
 EL = 2,079.82'  
 VC = 170'  
 K = 161

END GRADE  
 -L- STA.29+75.00  
 EL = 2,079.34

BM3 ELEVATION = 2080.12  
 N 596897 E 754660  
 L STATION 30+24.00  
 N 15'14"42.96" E Dist 72.70  
 CHISELED SQUARE AT NE CORNER OF CONC. PAD

SEE SHEET 4 FOR PLAN VIEW