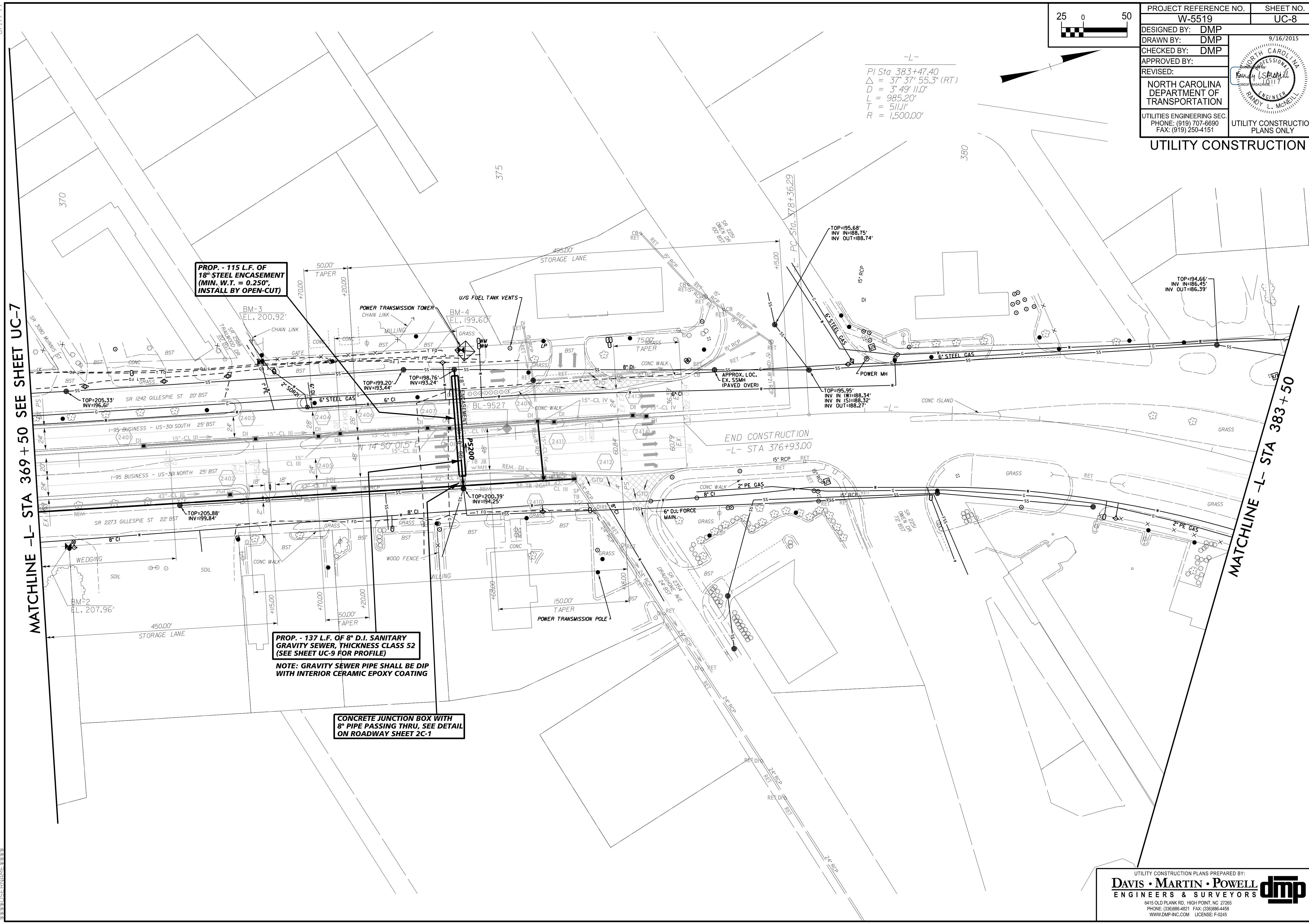


PROJECT REFERENCE NO.	W-5519	SHEET NO.	UC-8
DESIGNED BY:	DMP	9/16/2015	
DRAWN BY:	DMP	NORTH CAROLINA PROFESSIONAL ENGINEER	
CHECKED BY:	DMP	Randy L. McNeill	
APPROVED BY:		ENGINEER	
REVISED:			
NORTH CAROLINA DEPARTMENT OF TRANSPORTATION		UTILITY CONSTRUCTION PLANS ONLY	
UTILITIES ENGINEERING SEC. PHONE: (919) 707-6690 FAX: (919) 250-4151			

-L-
 PI Sta 383+47.40
 $\Delta = 37^\circ 37' 55.3" (RT)$
 $D = 3^\circ 49' 11.0"$
 $L = 985.20'$
 $T = 511.1'$
 $R = 1,500.00'$



PROP. - 115 L.F. OF 18" STEEL ENCASEMENT (MIN. W.T. = 0.250", INSTALL BY OPEN-CUT)

PROP. - 137 L.F. OF 8" D.I. SANITARY GRAVITY SEWER, THICKNESS CLASS 52 (SEE SHEET UC-9 FOR PROFILE)
 NOTE: GRAVITY SEWER PIPE SHALL BE DIP WITH INTERIOR CERAMIC EPOXY COATING

CONCRETE JUNCTION BOX WITH 8" PIPE PASSING THRU, SEE DETAIL ON ROADWAY SHEET 2C-1