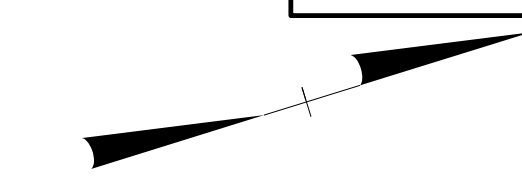


8.17.09

-L-
 PI Sta 326+78.01
 $\Delta = 18^{\circ} 55' 53.1''$ (RT)
 $D = 3^{\circ} 49' 11.0''$
 $L = 495.62'$
 $T = 250.09'$
 $R = 1,500.00'$

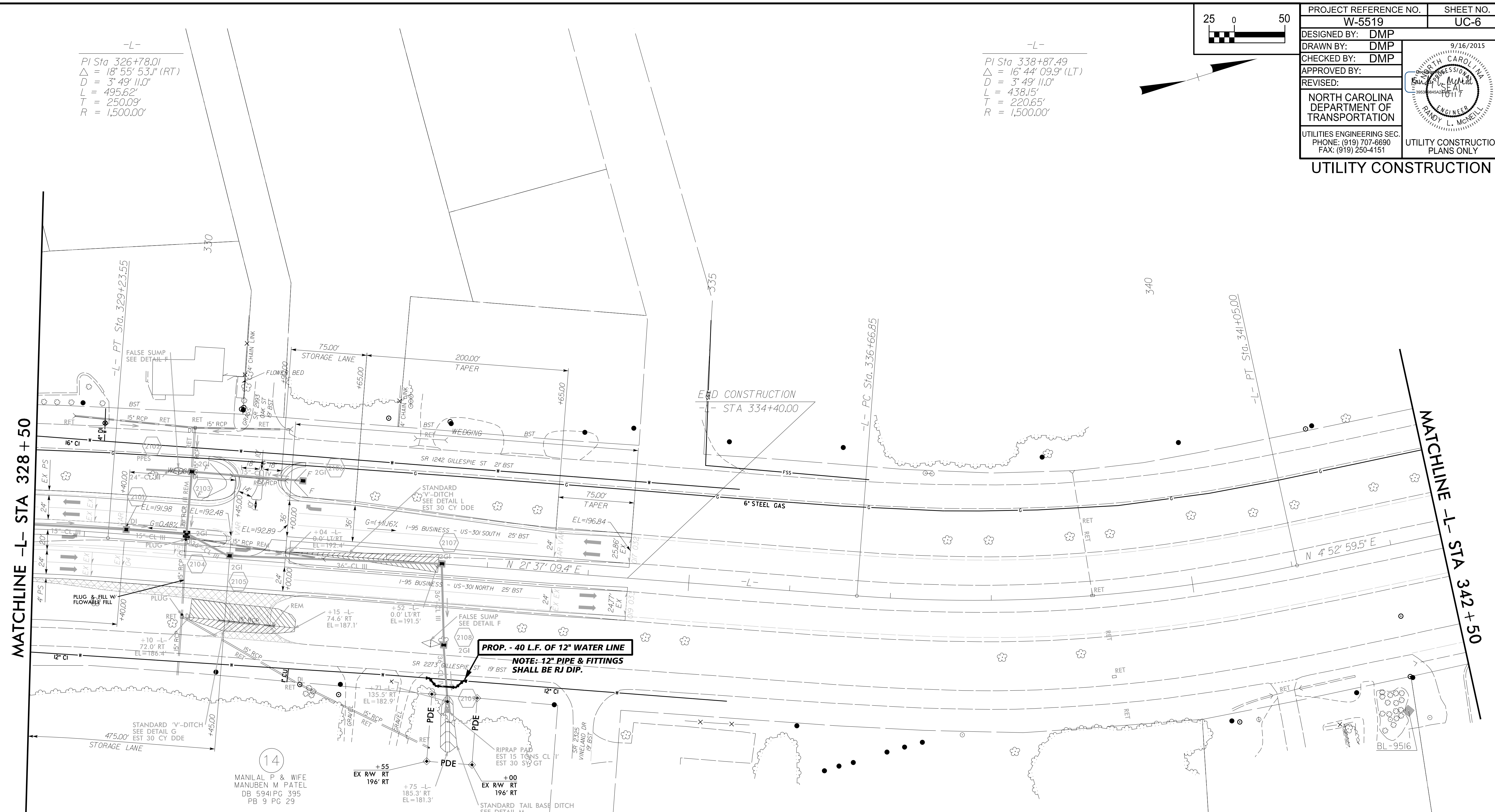
-L-
 PI Sta 338+87.49
 $\Delta = 16^{\circ} 44' 09.9''$ (LT)
 $D = 3^{\circ} 49' 11.0''$
 $L = 438.15'$
 $T = 220.65'$
 $R = 1,500.00'$



PROJECT REFERENCE NO.	W-5519	SHEET NO.	UC-6
DESIGNED BY:	DMP	9/16/2015	
DRAWN BY:	DMP		
CHECKED BY:	DMP		
APPROVED BY:	DMP		
REVISED:		NORTH CAROLINA DEPARTMENT OF TRANSPORTATION UTILITY ENGINEERING SEC. PHONE: (919) 707-6690 FAX: (919) 250-4151	
UTILITY CONSTRUCTION			

MATCHLINE -L- STA 328 + 50

MATCHLINE -L- STA 342 + 50



PROP. - 40 L.F. OF 12" WATER LINE
NOTE: 12" PIPE & FITTINGS SHALL BE RJ DIP.

14
 MANILAL P & WIFE
 MANUBEN M PATEL
 DB 594 PG 395
 PB 9 PG 29

