
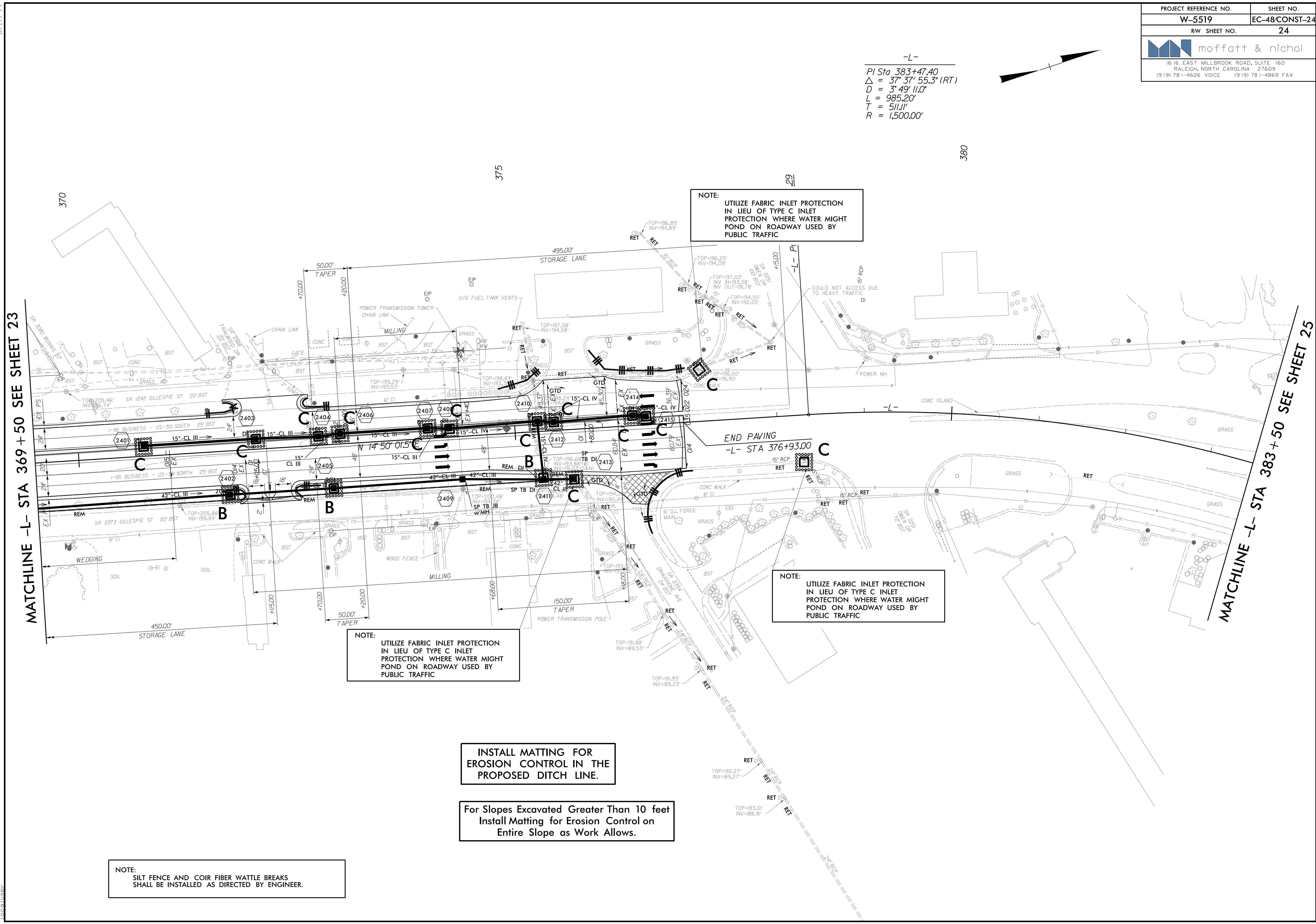
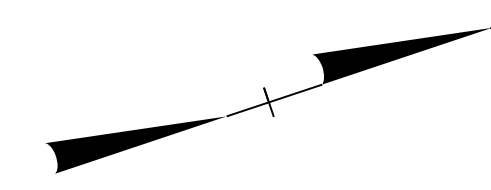


PROJECT REFERENCE NO.	SHEET NO.
W-5519	EC-48/CONST-24
RW SHEET NO.	24
 1616 EAST MILLBROOK ROAD, SUITE 160 RALEIGH, NORTH CAROLINA 27609 (919) 781-4626 VOICE (919) 781-4869 FAX	

-L-  
 PI Sta 383+47.40  
 $\Delta = 37^{\circ} 37' 55.3" (RT)$   
 $D = 3^{\circ} 49' 11.0"$   
 $L = 985.20'$   
 $T = 511.1'$   
 $R = 1,500.00'$



NOTE:  
 UTILIZE FABRIC INLET PROTECTION  
 IN LIEU OF TYPE C INLET  
 PROTECTION WHERE WATER MIGHT  
 POND ON ROADWAY USED BY  
 PUBLIC TRAFFIC

NOTE:  
 UTILIZE FABRIC INLET PROTECTION  
 IN LIEU OF TYPE C INLET  
 PROTECTION WHERE WATER MIGHT  
 POND ON ROADWAY USED BY  
 PUBLIC TRAFFIC

NOTE:  
 UTILIZE FABRIC INLET PROTECTION  
 IN LIEU OF TYPE C INLET  
 PROTECTION WHERE WATER MIGHT  
 POND ON ROADWAY USED BY  
 PUBLIC TRAFFIC

INSTALL MATTING FOR  
 EROSION CONTROL IN THE  
 PROPOSED DITCH LINE.

For Slopes Excavated Greater Than 10 feet  
 Install Matting for Erosion Control on  
 Entire Slope as Work Allows.

NOTE:  
 SILT FENCE AND COIR FIBER WATTLE BREAKS  
 SHALL BE INSTALLED AS DIRECTED BY ENGINEER.

MATCHLINE -L- STA 369+50 SEE SHEET 23

MATCHLINE -L- STA 383+50 SEE SHEET 25

8/17/99  
 9/14/2015  
 R:\Projects\Bids\W-5519\_REL\_PSH48\_FINAL.dgn  
 localuser