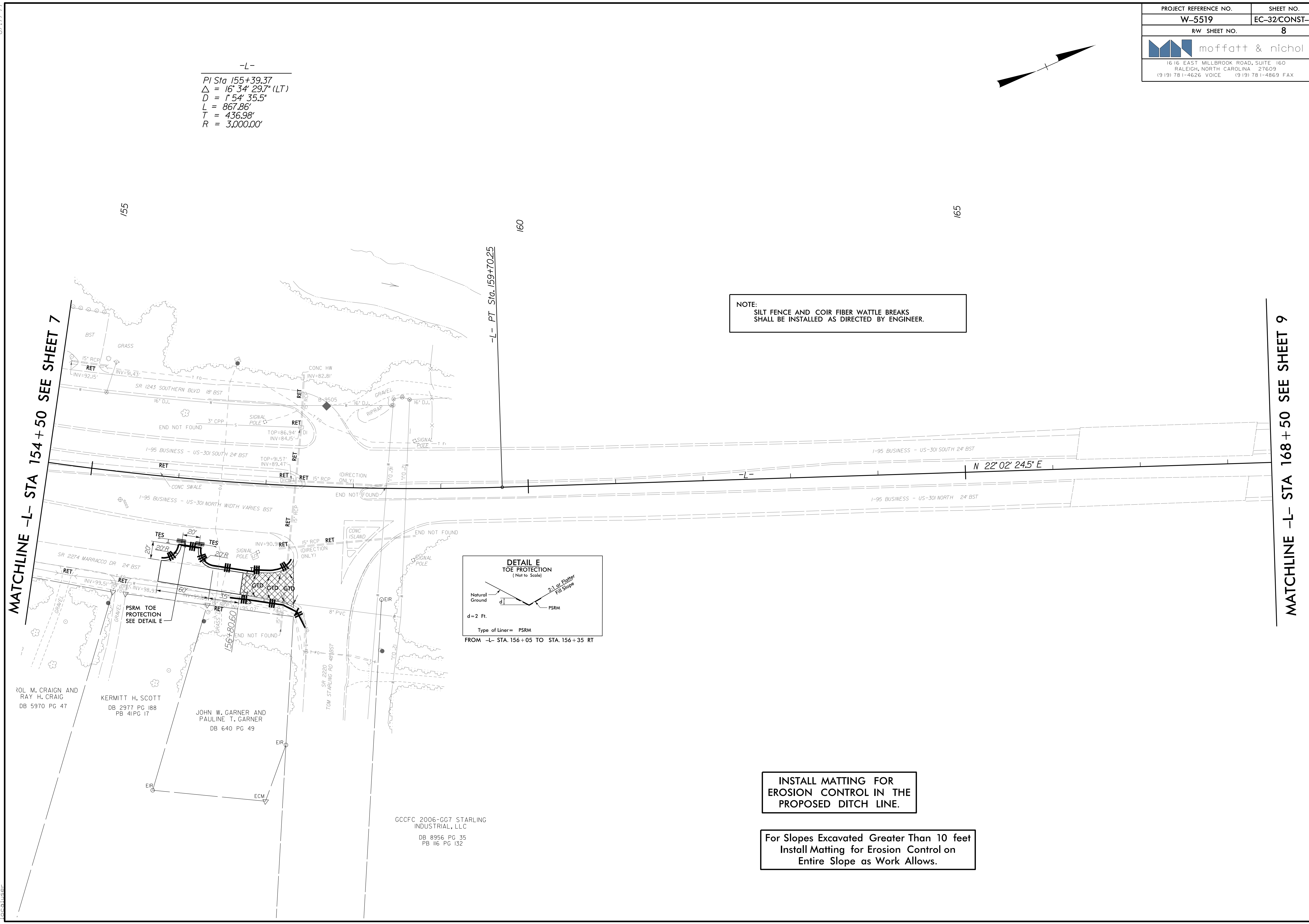
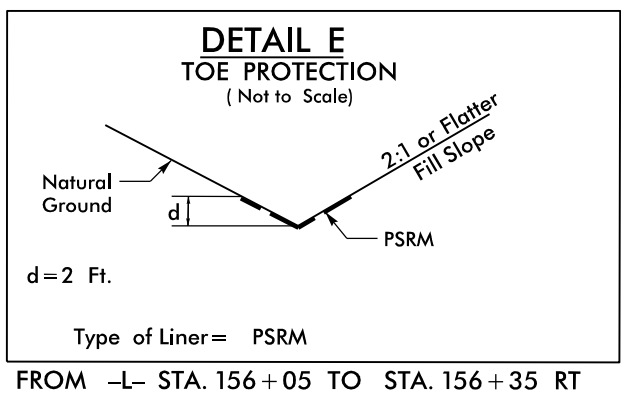


-L-  
PI Sta 155+39.37  
 $\Delta = 16^{\circ} 34' 29.7''$  (LT)  
 $D = 1^{\circ} 54' 35.5''$   
 $L = 867.86'$   
 $T = 436.98'$   
 $R = 3,000.00'$

8/17/99  
8/14/2015  
R:\Projects\W-5519\_REL\_PSH32\_FINAL.dgn  
locuser



**NOTE:**  
SILT FENCE AND COIR FIBER WATTLE BREAKS  
SHALL BE INSTALLED AS DIRECTED BY ENGINEER.



**INSTALL MATTING FOR  
EROSION CONTROL IN THE  
PROPOSED DITCH LINE.**

**For Slopes Excavated Greater Than 10 feet  
Install Matting for Erosion Control on  
Entire Slope as Work Allows.**

**MATCHLINE -L- STA 154+50 SEE SHEET 7**

**MATCHLINE -L- STA 168+50 SEE SHEET 9**

GCCFC 2006-GG7 STARLING  
INDUSTRIAL, LLC  
DB 8956 PG 35  
PB 16 PG 132