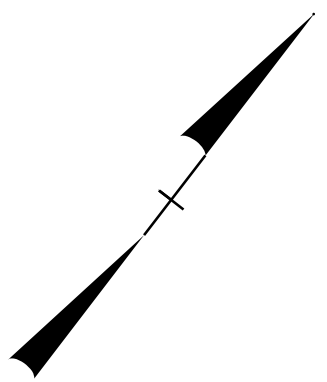


SECTION 9 386+00 +/- TO 423+98 +/-

PROJ. REFERENCE NO. W-5519	SHEET NO. TMP-27
-------------------------------	---------------------

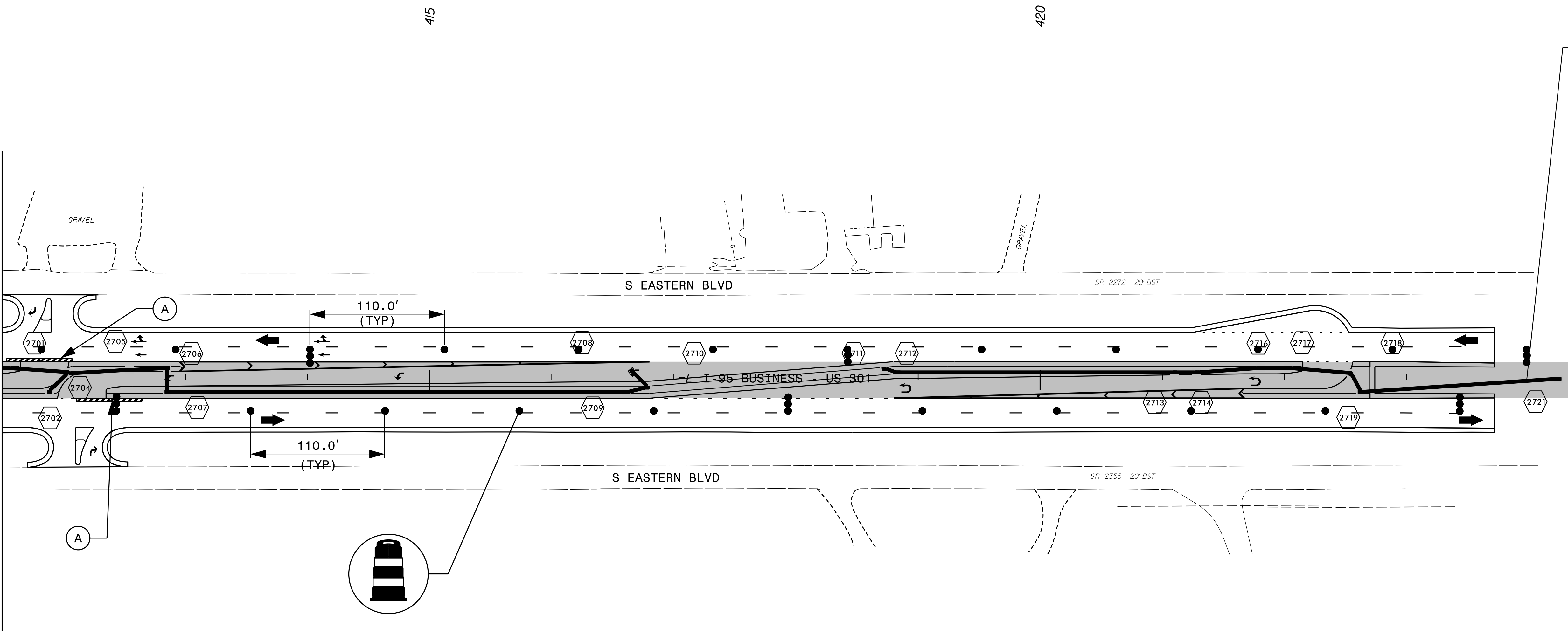
RAMEY KEMP ASSOCIATES, INC.
Transportation Engineers
5808 Faringdon Place, Suite 100
Raleigh, North Carolina 27609
919-872-5115 Tel. 919-878-5416 Fax.
www.rameykemp.com
NC License No. C-9910



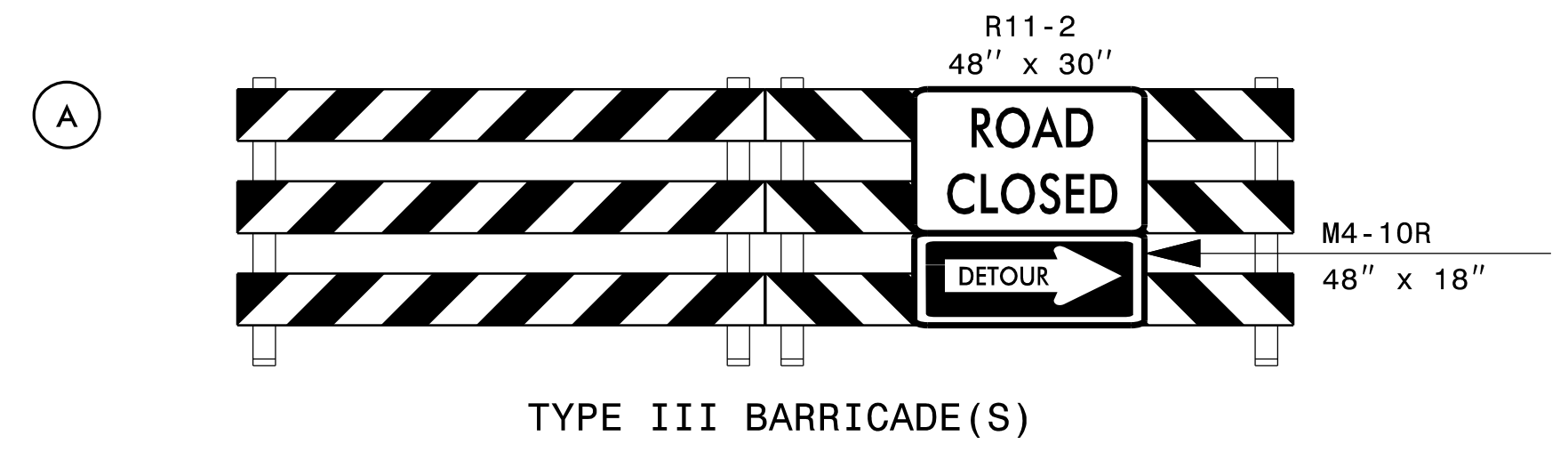
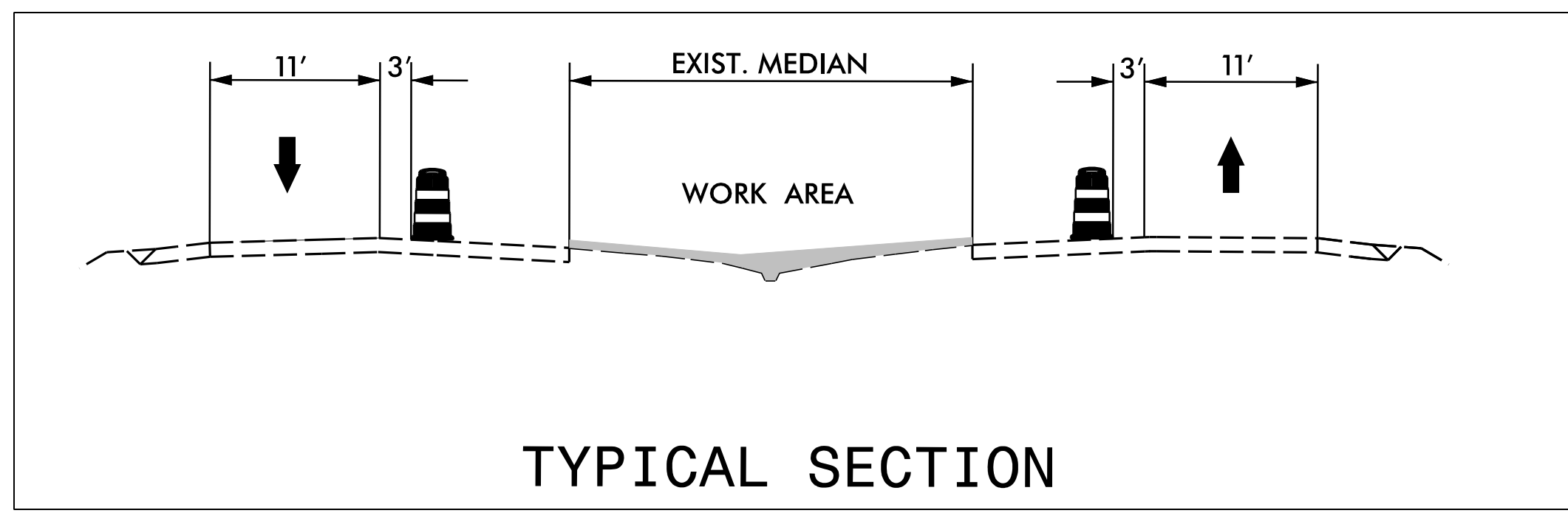
CONSTRUCTION

NOTE: MAINTAIN ACCESS TO NEARBY CROSSOVER WITHIN 1 MILE OF WORK AREA AT ALL TIMES.

MATCHLINE -L- STA 411+50 SEE SHEET 26



END TIP PROJECT W-5519
-L- STA. 423+98.27



APPROVED:	DATE: 9/9/2015	PHASE II					
SEAL							
SCALE: 1"=50'	Prepared For:	<table border="1"> <thead> <tr> <th>REVISIONS</th> </tr> </thead> <tbody> <tr><td> </td></tr> <tr><td> </td></tr> <tr><td> </td></tr> </tbody> </table>		REVISIONS			
REVISIONS							
DEVELOPED BY: DAJ		CADD FILE					
REVIEWED BY: MAD							
RKA PROJ. #: 14071							