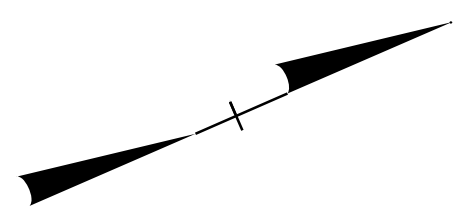


SECTION 6 271+00 +/- TO 287+30 +/-

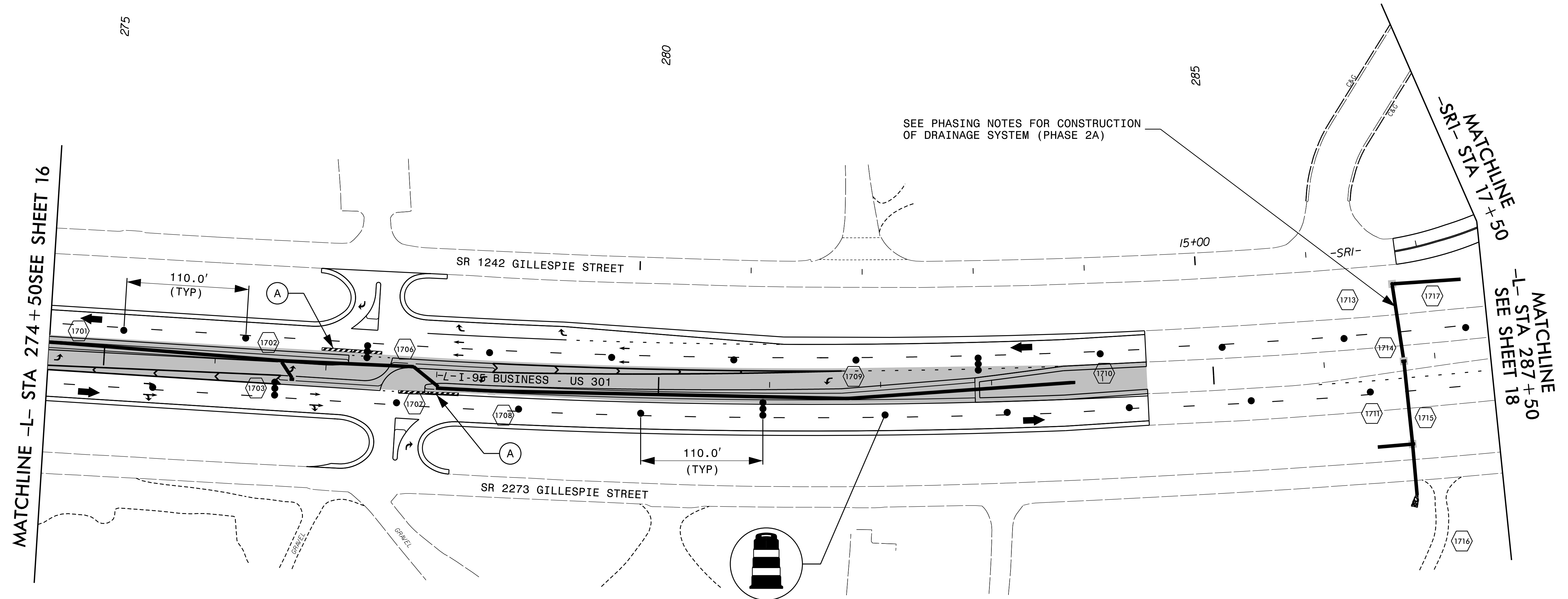
PROJ. REFERENCE NO. W-5519	SHEET NO. TMP-17
-------------------------------	---------------------

RAMEY KEMP ASSOCIATES, INC.
 Transportation Engineers
 5808 Farington Place, Suite 100
 Raleigh, North Carolina 27609
 919-872-5115 Tel. 919-878-5416 Fax.
 www.rameykemp.com
 NC License No. C-9910



CONSTRUCTION

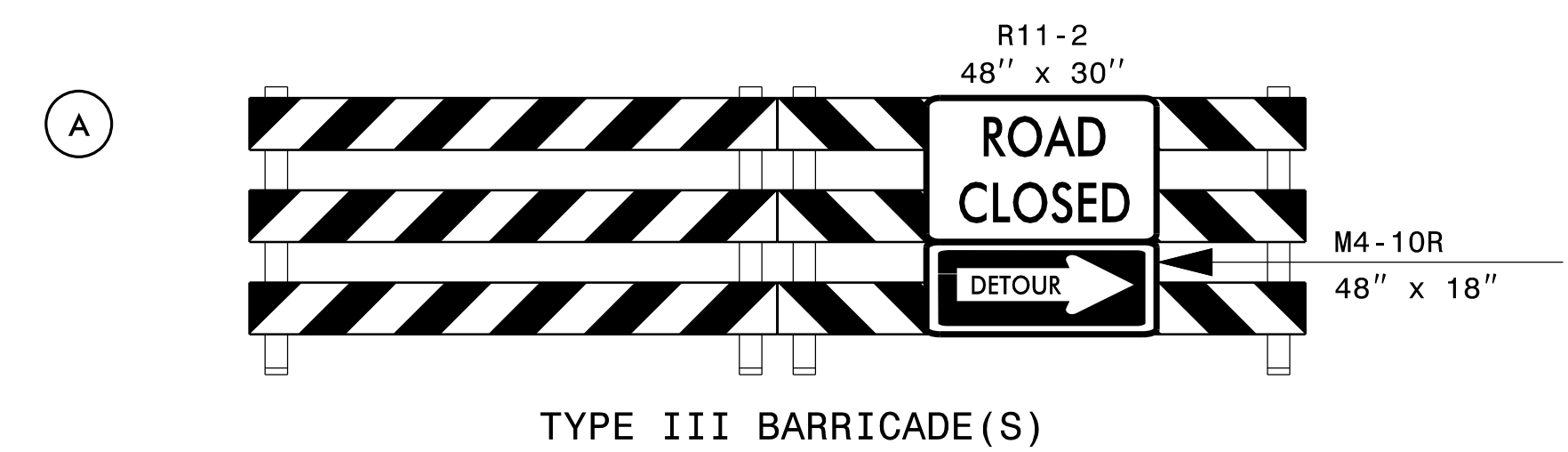
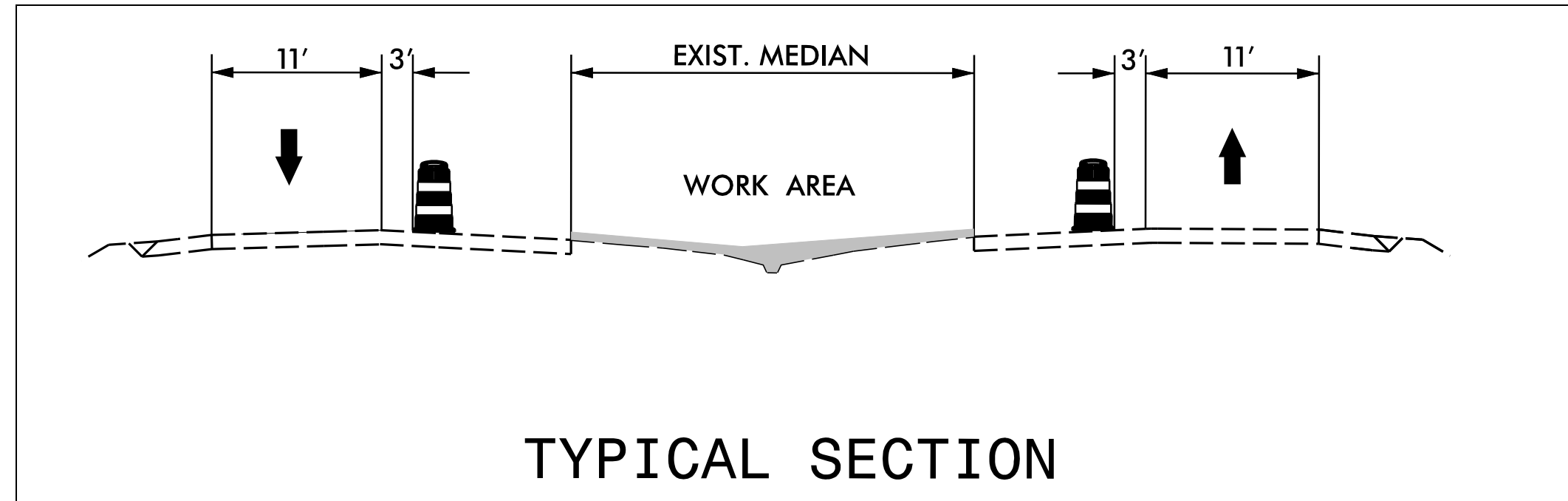
NOTE: MAINTAIN ACCESS TO NEARBY CROSSOVER WITHIN 1 MILE OF WORK AREA AT ALL TIMES.



SEE PHASING NOTES FOR CONSTRUCTION OF DRAINAGE SYSTEM (PHASE 2A)

MATCHLINE -L- STA 274+50 SEE SHEET 16

MATCHLINE -L- STA 287+50 SEE SHEET 18



APPROVED:	DATE: 9/9/2015	PHASE II	
SEAL	SCALE: 1"=50'	Prepared For:	REVISIONS
	DEVELOPED BY: DAJ		
	REVIEWED BY: MAD		
	RKA PROJ. #: 14071	CADD FILE	