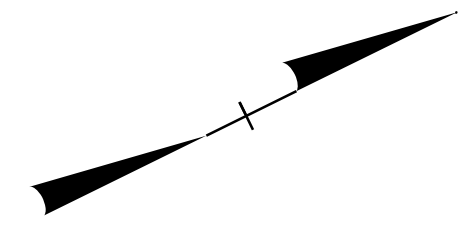


SECTION 3 200+25 +/- TO 229+50 +/-

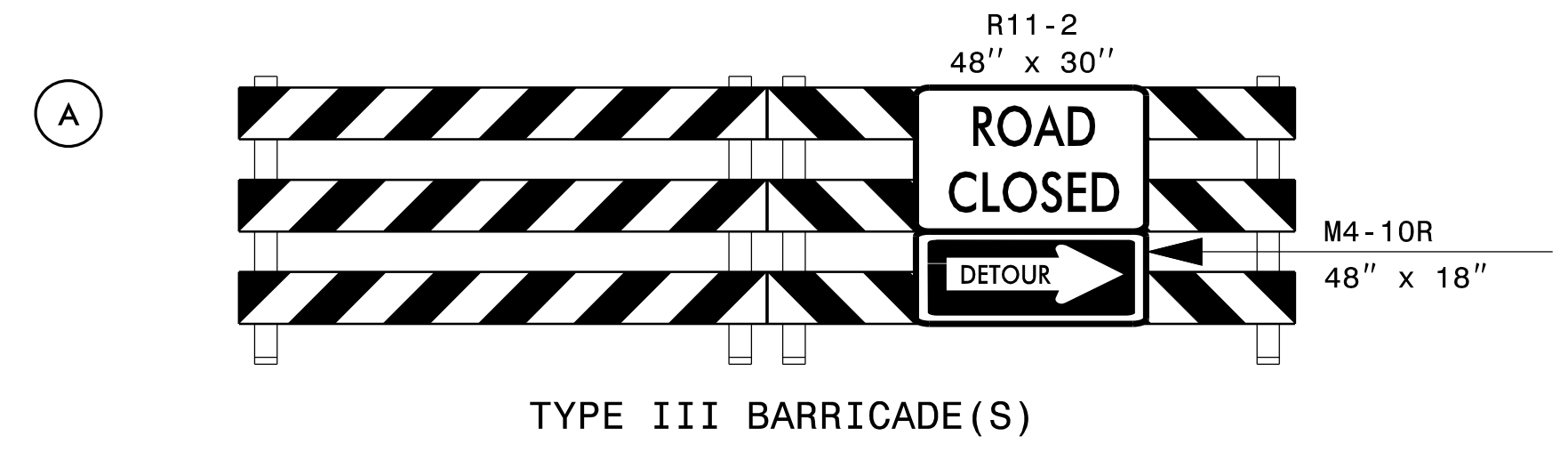
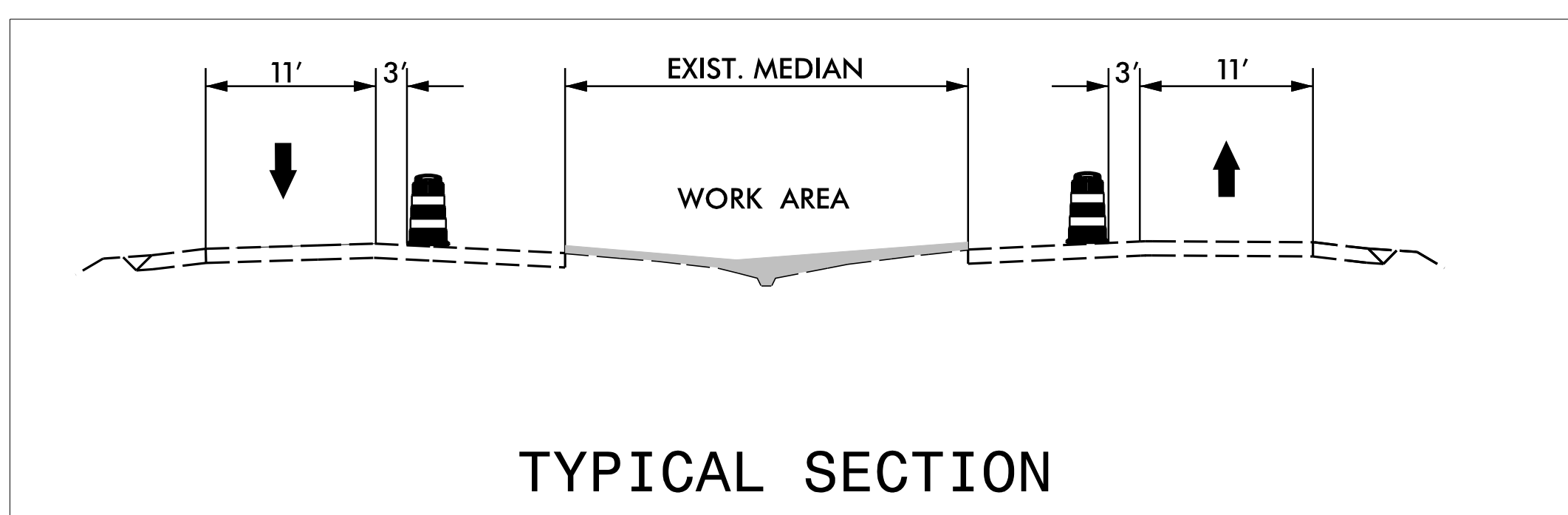
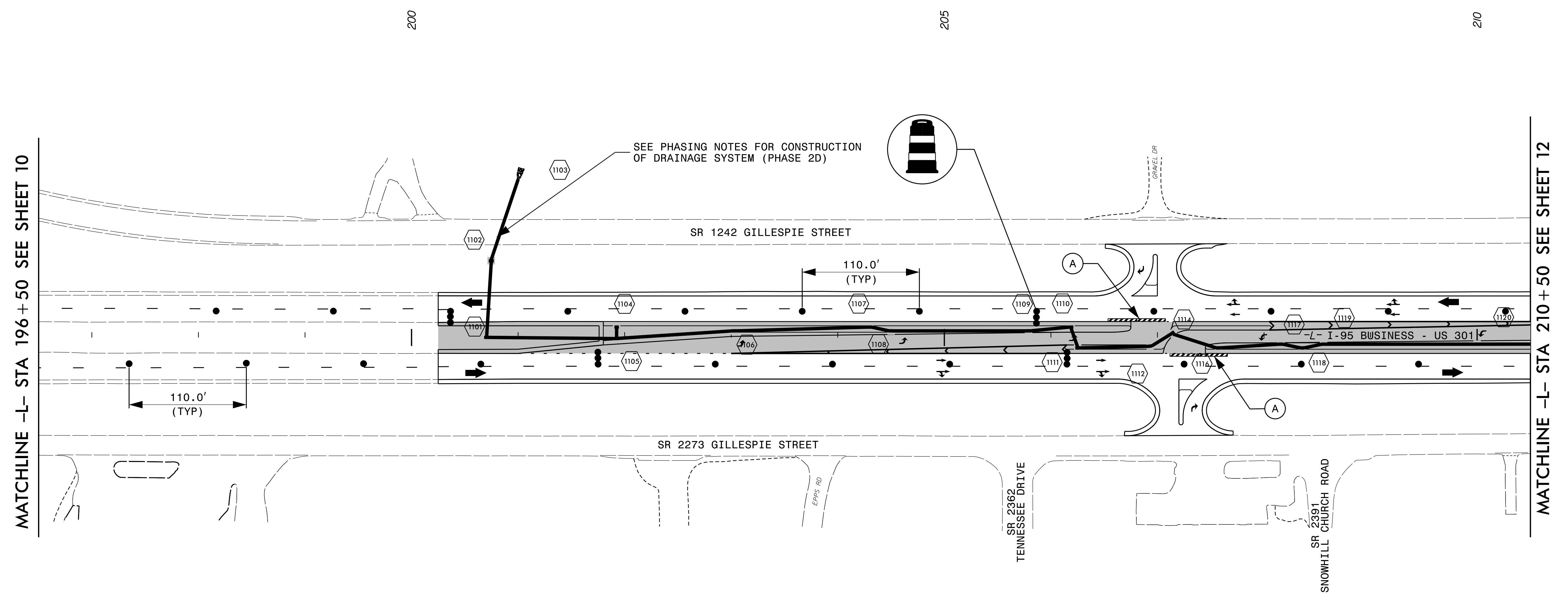
PROJ. REFERENCE NO.	SHEET NO.
W-5519	TMP-11

RAMEY KEMP ASSOCIATES, INC.
 Transportation Engineers
 5808 Faringdon Place, Suite 100
 Raleigh, North Carolina 27609
 919-872-5115 Tel. 919-878-5416 Fax.
 www.rameykemp.com
 NC License No. C-3910



CONSTRUCTION

NOTE: MAINTAIN ACCESS TO NEARBY CROSSOVER WITHIN 1 MILE OF WORK AREA AT ALL TIMES.



APPROVED: _____ DATE: _____	PHASE II		
DocuSigned by: Merrick A. Dugal SEAL 10/28/2015	SCALE: 1"=50'	Prepared For:	
	DATE:		
	DEVELOPED BY: DAJ		REVISIONS
	REVIEWED BY: MAD		
RKA PROJ. #: 14071	CADD FILE		