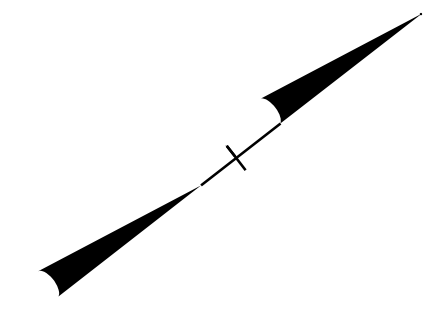


PROJ. REFERENCE NO.	SHEET NO.
W-5519	TMP-6

**RAMEY KEMP ASSOCIATES, INC.**  
 Transportation Engineers  
 5808 Farington Place, Suite 100  
 Raleigh, North Carolina 27609  
 919-872-5115 Tel. 919-878-5416 Fax.  
 www.rameykemp.com  
 NC License No. C-9910



**SECTION 1 101+00 +/- TO 128+00 +/-**  
**SECTION 2 128+00 +/- TO 150+45 +/-**

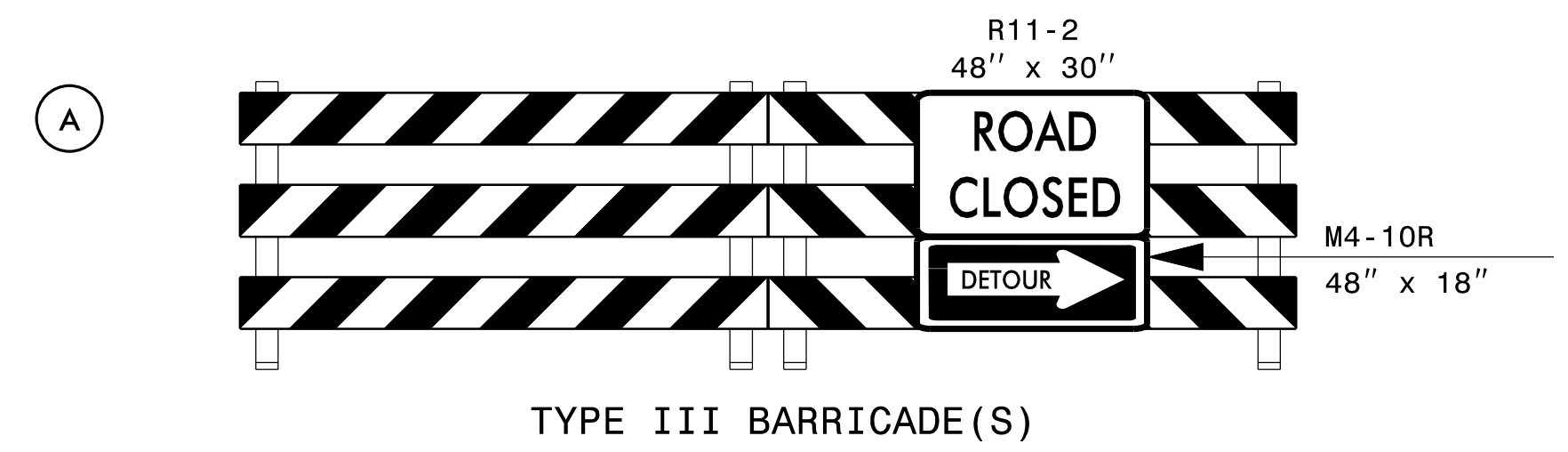
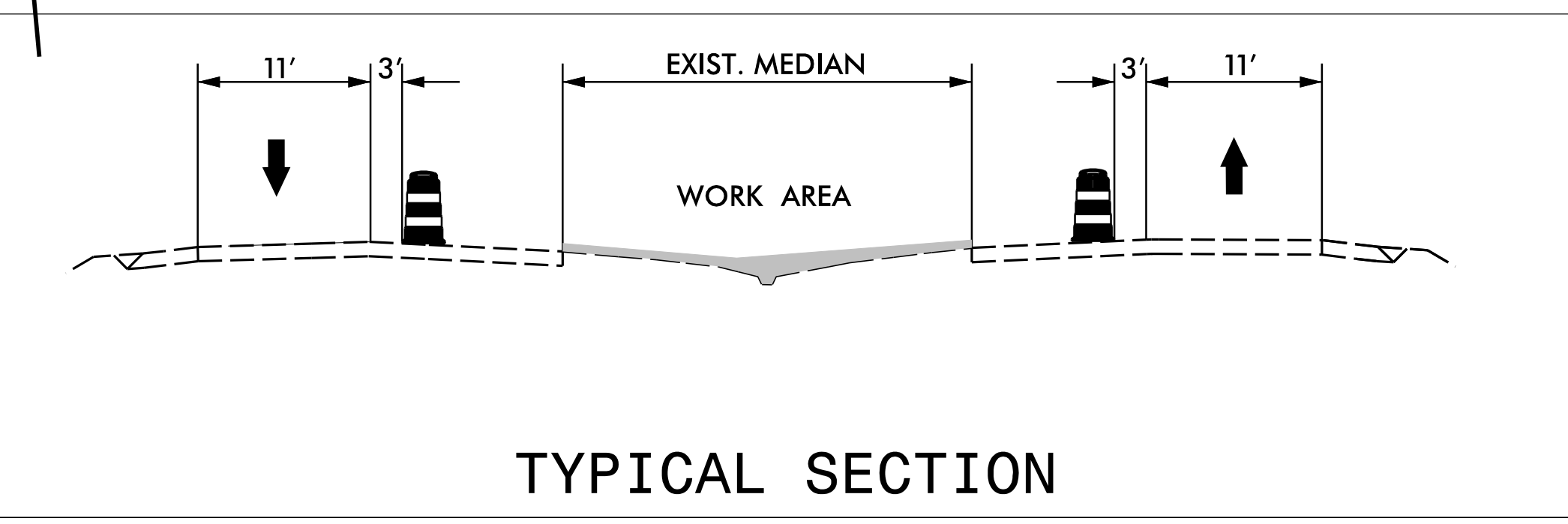
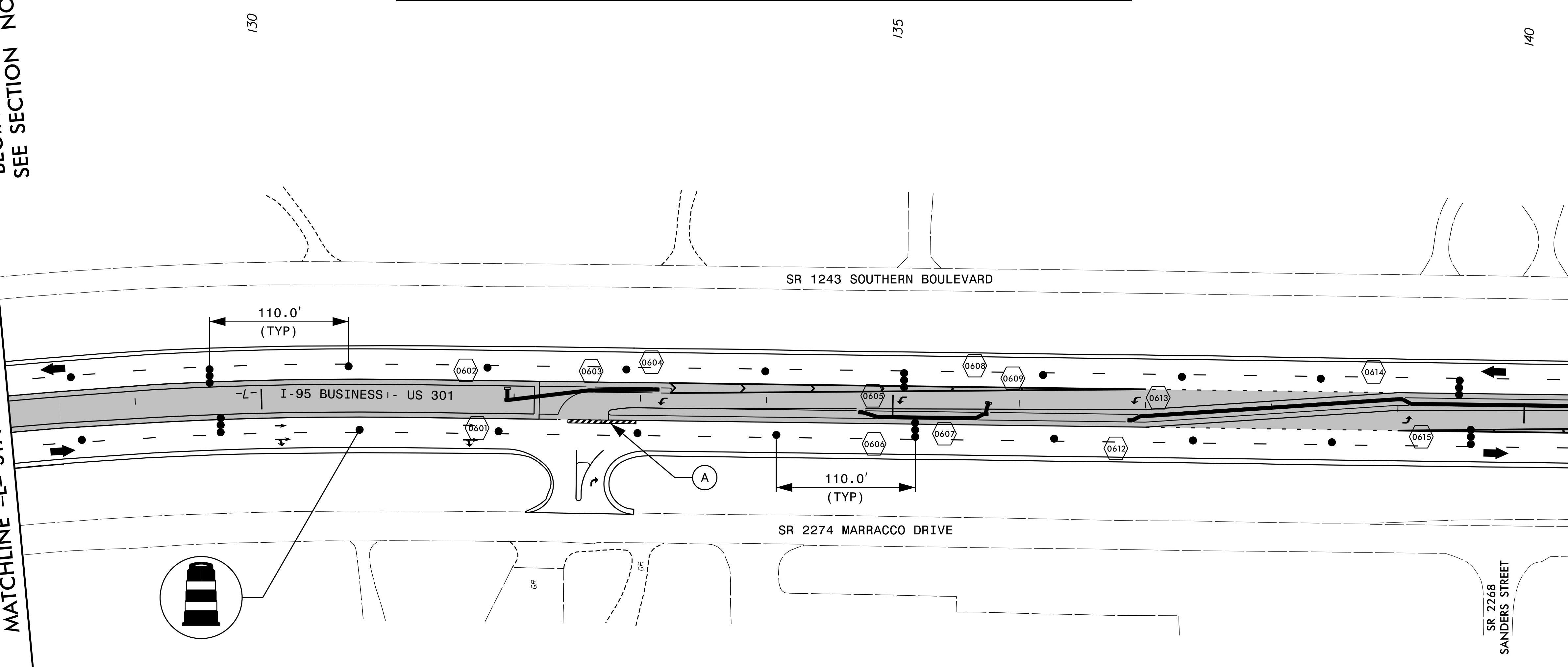
SECTION NOTE: ADJACENT SECTIONS ARE NOT TO BE CONSTRUCTED AT THE SAME TIME. CONTRACTOR TO PROVIDE APPROPRIATE MERGE TAPER AND BUFFER SPACING PER NCDOT RSD 1101.02 (SHEET 3 OF 15) FOR EACH SECTION. (SEE PHASING NOTES FOR SEQUENCING.)

CONSTRUCTION

NOTE: MAINTAIN ACCESS TO NEARBY CROSSEVER WITHIN 1 MILE OF WORK AREA AT ALL TIMES.

MATCHLINE -L- STA 128+00 SEE SHEET 5  
 END SECTION 1  
 BEGIN SECTION 2  
 SEE SECTION NOTE

MATCHLINE -L- STA 140+50 SEE SHEET 7



APPROVED: <i>M. Dugal</i> DATE: 9/9/2015	<b>PHASE II</b>		
SEAL 	SCALE: 1"=50'	Prepared For:	
	DATE:		
	DEVELOPED BY: DAJ		REVISIONS
	REVIEWED BY: MAD		
RKA PROJ. #: 14071		CADD FILE	