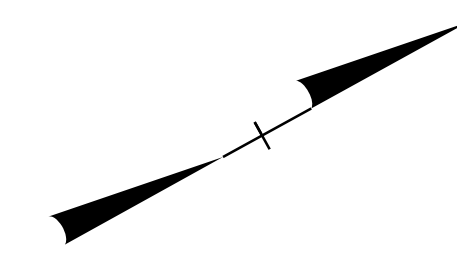


PROJ. REFERENCE NO. W-5519	SHEET NO. TMP-5
-------------------------------	--------------------

RAMEY KEMP ASSOCIATES, INC.
Transportation Engineers
5808 Farington Place, Suite 100
Raleigh, North Carolina 27609
919-872-5115 Tel. 919-878-5416 Fax.
www.rameykemp.com
NC License No. C-9910

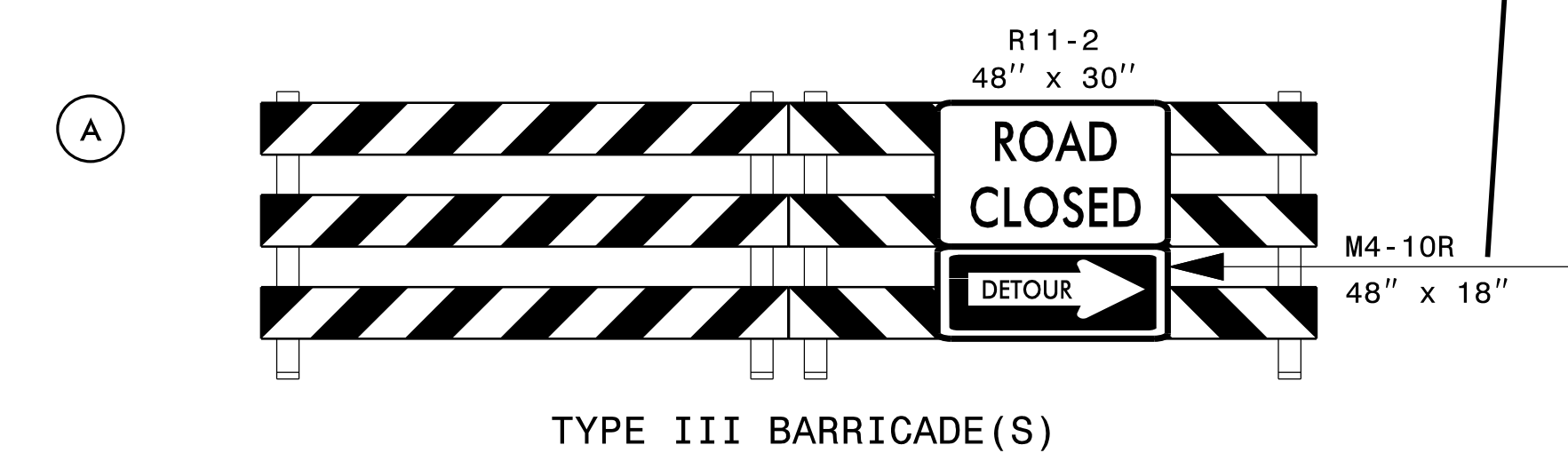
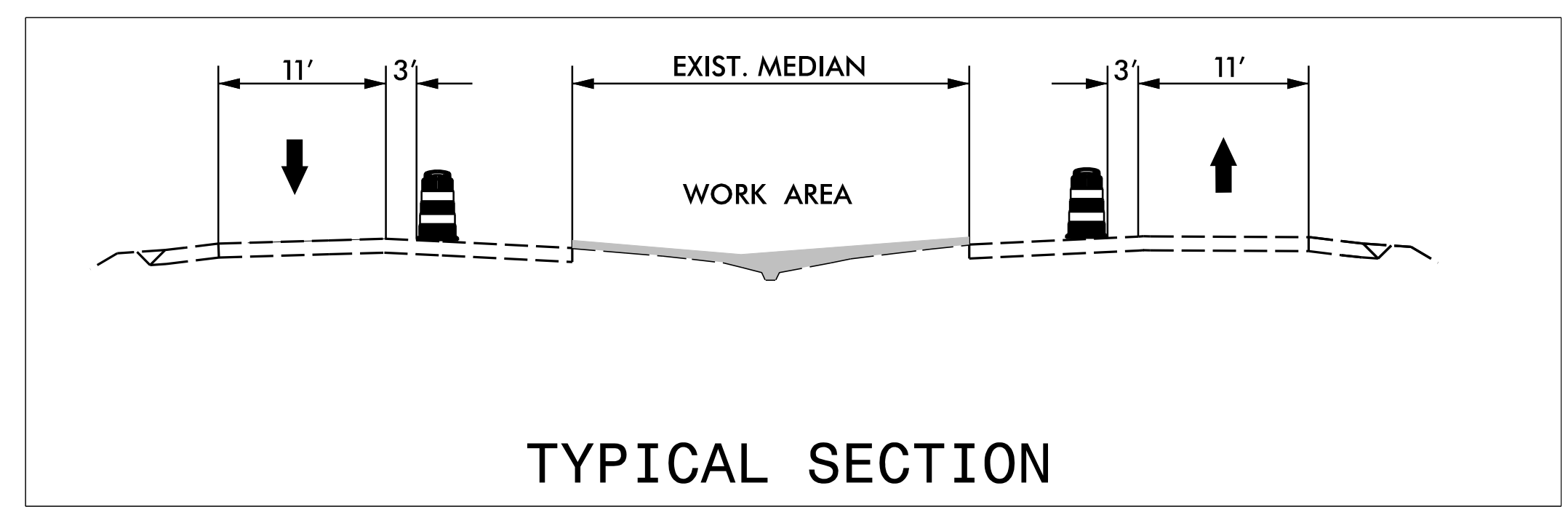
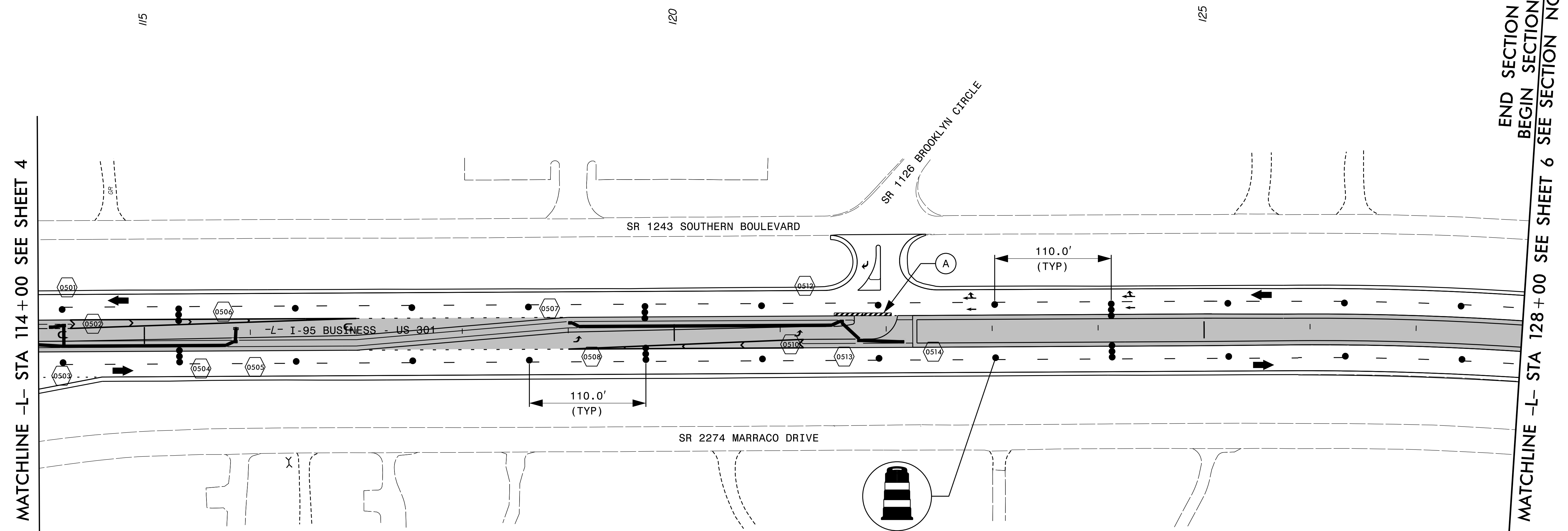


SECTION 1 101+00 +/- TO 128+00 +/-
SECTION 2 128+00 +/- TO 150+45 +/-

SECTION NOTE: ADJACENT SECTIONS ARE NOT TO BE CONSTRUCTED AT THE SAME TIME. CONTRACTOR TO PROVIDE APPROPRIATE MERGE TAPER AND BUFFER SPACING PER NCDOT RSD 1101.02 (SHEET 3 OF 15) FOR EACH SECTION. (SEE PHASING NOTES FOR SEQUENCING.)

CONSTRUCTION

NOTE: MAINTAIN ACCESS TO NEARBY CROSSOVER WITHIN 1 MILE OF WORK AREA AT ALL TIMES.



APPROVED: <i>[Signature]</i> DATE: 9/9/2015	PHASE II		
	SCALE: 1"=50'	Prepared For:	
	DATE:		
	DEVELOPED BY: DAJ		REVISIONS
	REVIEWED BY: MAD		
RKA PROJ. #: 14071	CADD FILE		